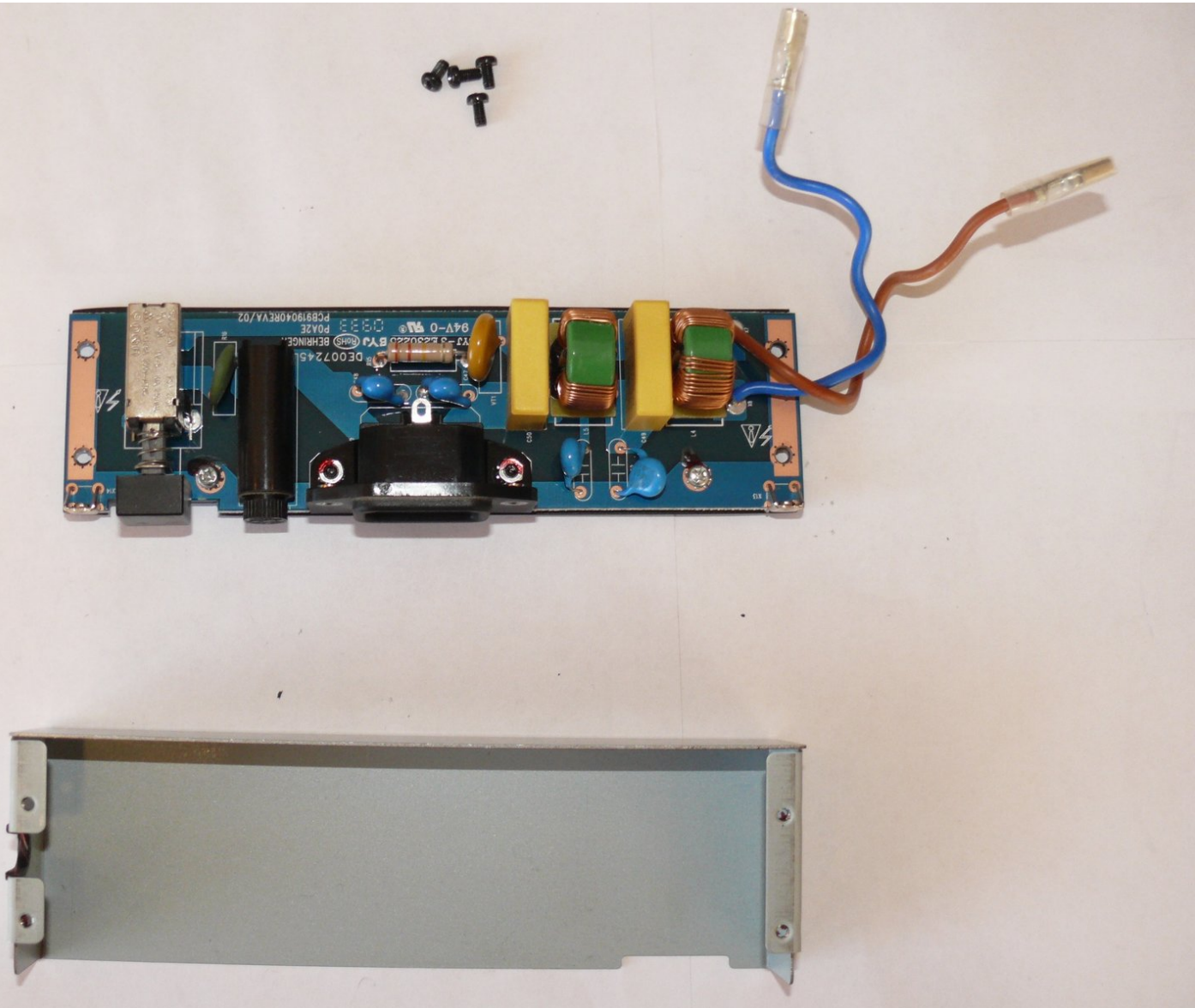




# Behringer Eurolive B212D Power PCB Replacement

Replace the PCB that handles the speaker's power input circuitry.

Written By: gameslammer7



## INTRODUCTION

The power PCB is attached to the inside of the back panel and provides access to the power inputs from the exterior of the speaker. This PCB transforms the incoming power to appropriate level for use by the other PCB's in the B212D speaker.



### TOOLS:

- [Phillips #1 Screwdriver](#) (1)
  - [Phillips #2 Screwdriver](#) (1)
-

## Step 1 — Removing the Behringer Eurolive B212D Electronics Box



**⚠ CAUTION:** Unplug your speaker from the power outlet.

- Remove the 8 Phillips screws from the back of the speaker.

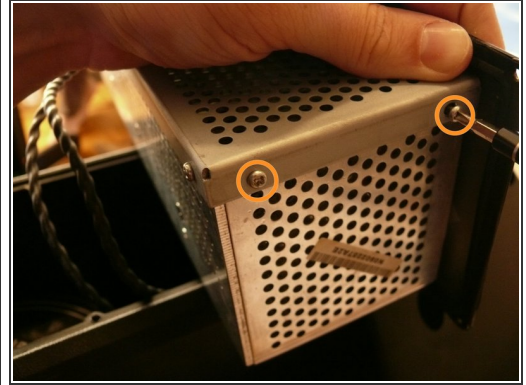
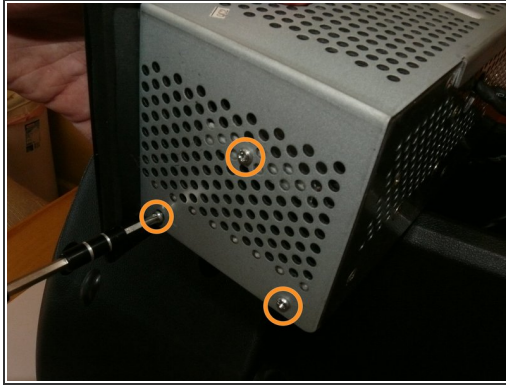
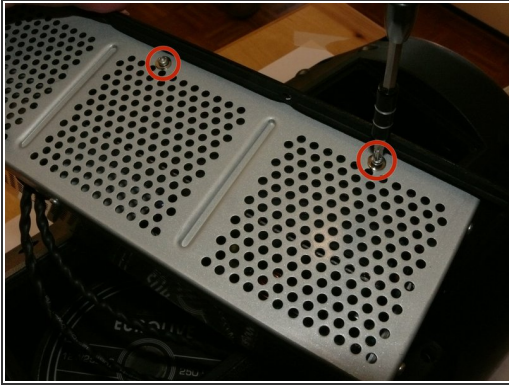
## Step 2



- Carefully remove the back panel, lifting out the metal electronics-box with it.

**⚠** To avoid damaging your speaker, remove slowly, as there is still a wire attached from the electronics box to the speaker.

### Step 3 — Detach the Behringer Eurolive B212D Electronics Box



- There are **two silver, 6 mm-long machine screws** with **two 1/8" inner-diameter washers** on the exterior of the metal electronics box; *remove these first* using a **#2 philips screwdriver**.
  - There are **five of the same type of machine screw (silver, 6 mm-long)** remaining around the metal electronics box's exterior; remove these as well.
- ✦ You should have removed a total of **7 machine screws** and **2 washers**.
- ⓘ The reason for removing the two screws with the two washers first (or replacing them last when reassembling) is that their holes are actually slots. They are designed as slots to accommodate slop in the assembly, and if unscrewed out of order, you may have difficulty while removing - or possibly even damage - the other five screws.

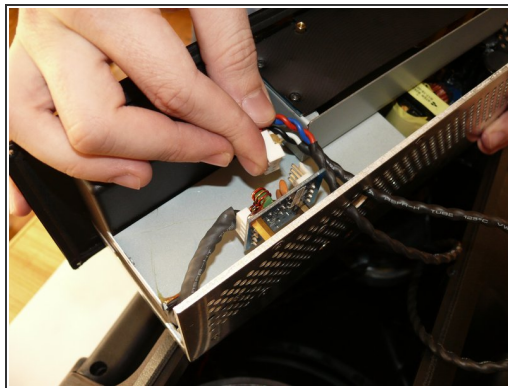
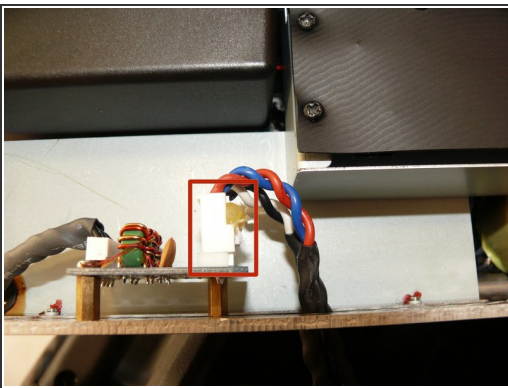


## Step 4



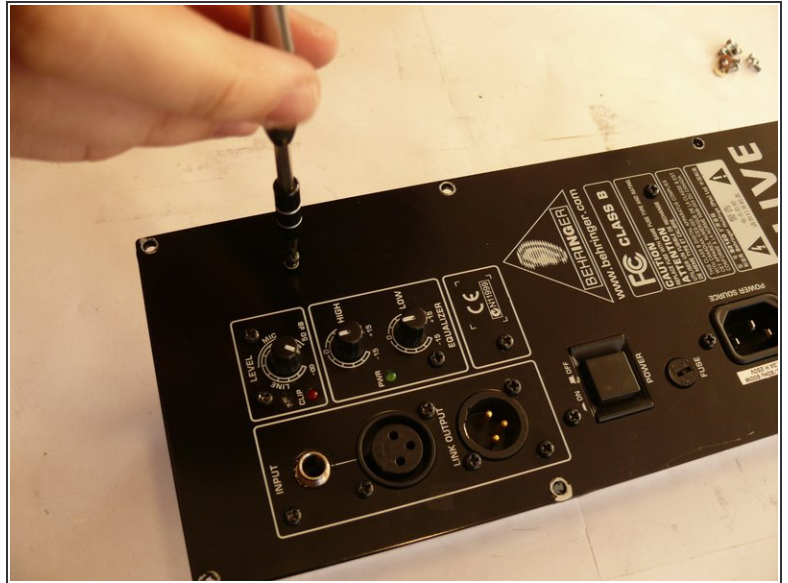
- Remove the portion of the metal housing that you freed with the 7 screws in the previous step.

## Step 5



- Inside the metal electronics box housing is a **white clip attached to a small PCB**; remove this.
- ⓘ The white clip in this image has been glued, indicating that the manufacturer may not expect the end user to remove this clip; it is difficult to proceed with the disassembling without doing so, however, because the rest of the speaker does not provide a sufficient surface on which to work.
- Snake the clip head through the hole in the metal electronics box casing.

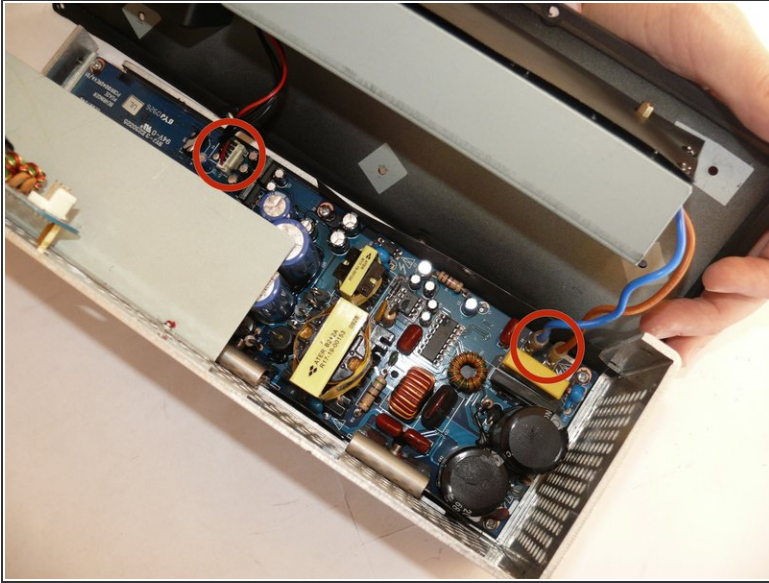
## Step 6 — Disassembling Behringer Eurolive B212D Power & Control Panel



- Remove the 4, 7/32" long machine screws with a #2 phillips head screwdriver.



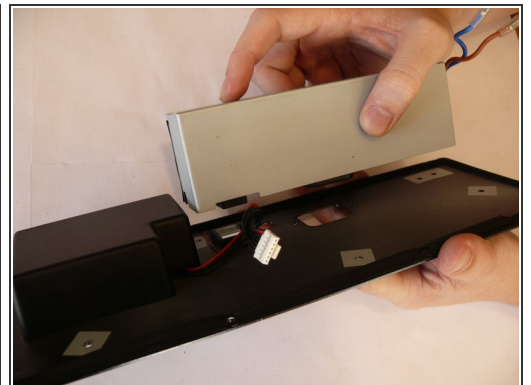
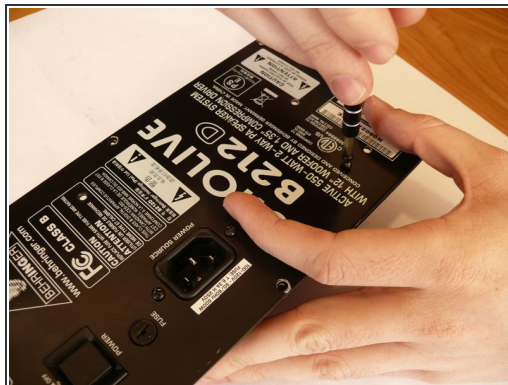
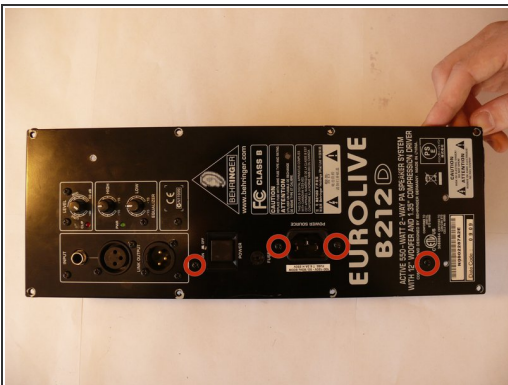
## Step 7



**⚠ Caution:** The circuit board contains many capacitors that could cause serious injury if touched. If possible, use a [capacitor discharge probe](#) to safely rid the capacitors of dangerous charges.

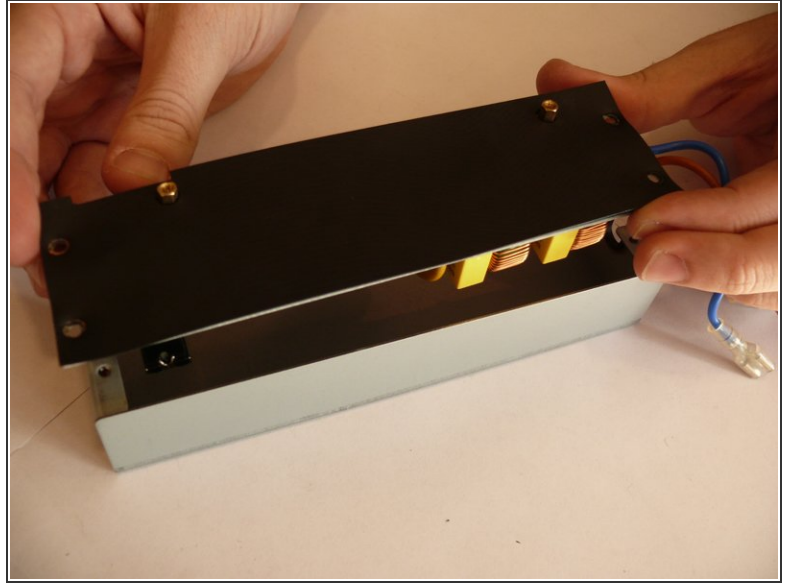
- Rotate the back panel so you can view the interior; **note the three wires attached.**
- Remove the wires so you can fully remove the back panel.

## Step 8 — Power PCB



- Remove the 4 indicated **7/32" long machine screws** with a **#1 phillips head screwdriver**.
- Remove the box containing the power PCB.

## Step 9



- There are 4 remaining **7/32" long machine screws** holding the power PCB to the box which contains it; remove these with a **#1 phillips head screwdriver**.
- Remove the power PCB.

To reassemble your device, follow these instructions in reverse order.