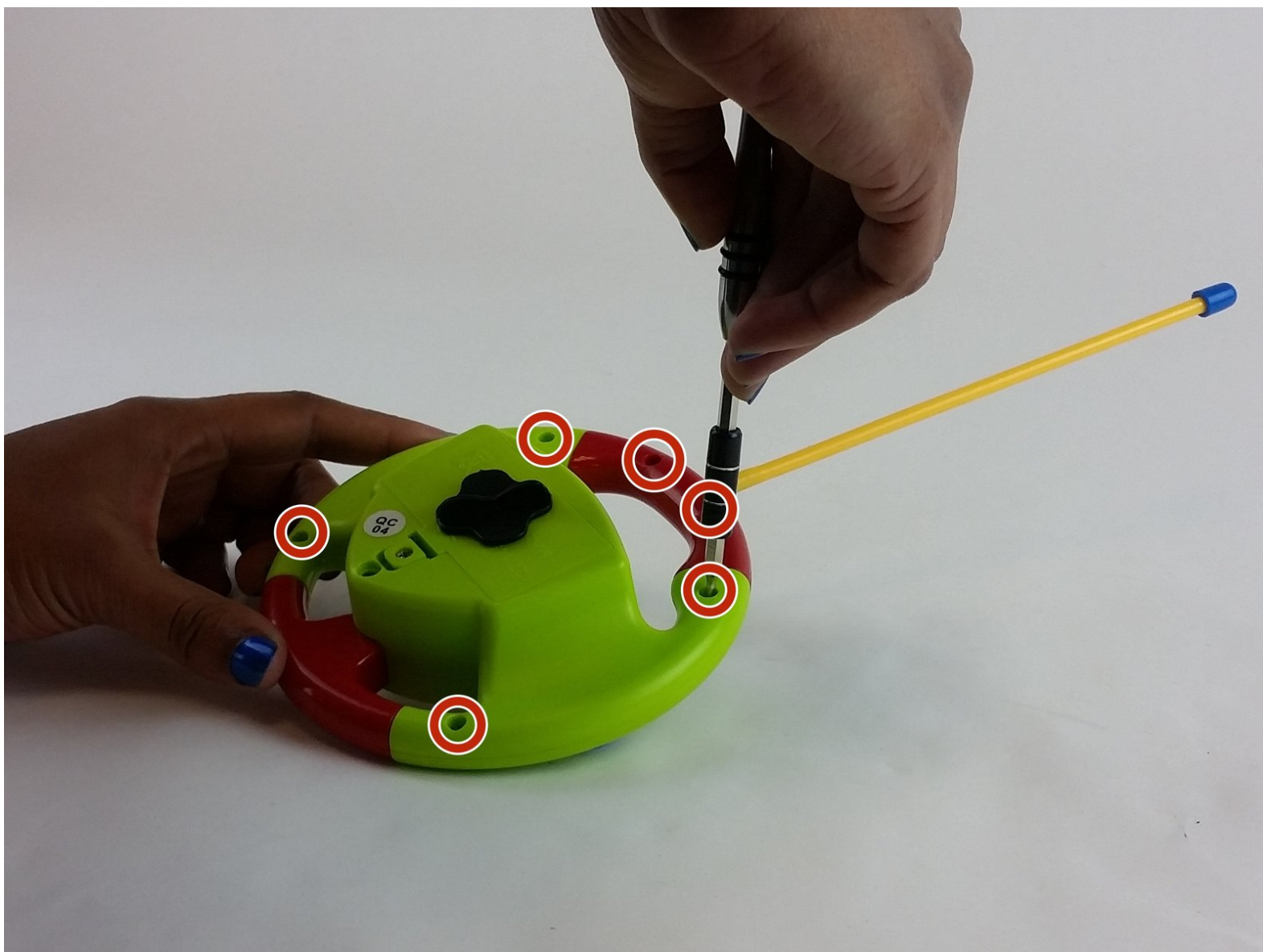




Beiens Cartoon RC Race Car LED Light Replacement

This guide will help you replace the LED light located inside the Beiens Cartoon RC Race Car remote control.

Written By: Amber Ashley



INTRODUCTION

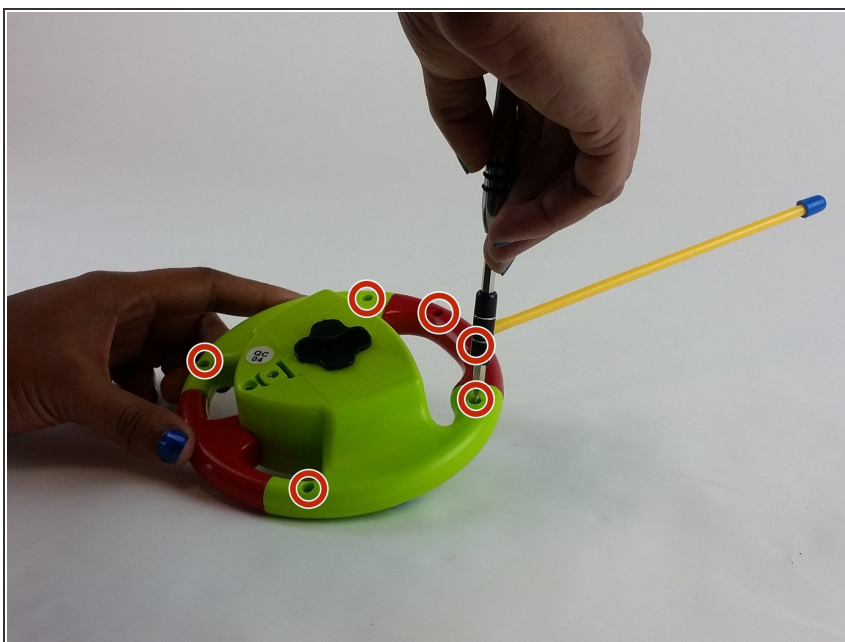
This guide requires you to use a soldering iron that can be dangerous if you do not know how to use it. I suggest looking at iFixit's [Soldering Guide](#).



TOOLS:

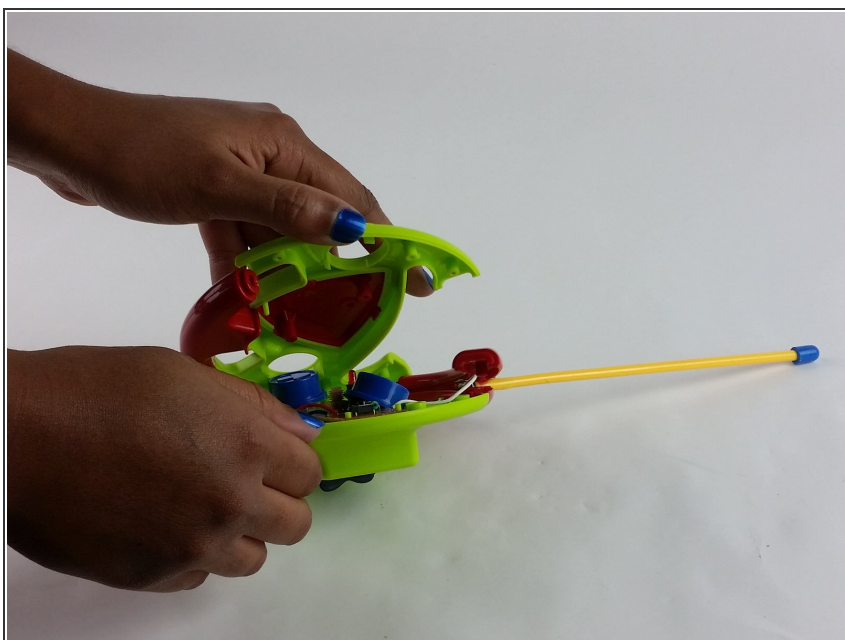
- [Phillips #00 Screwdriver](#) (1)
 - [Soldering Iron](#) (1)
-

Step 1 — LED Light



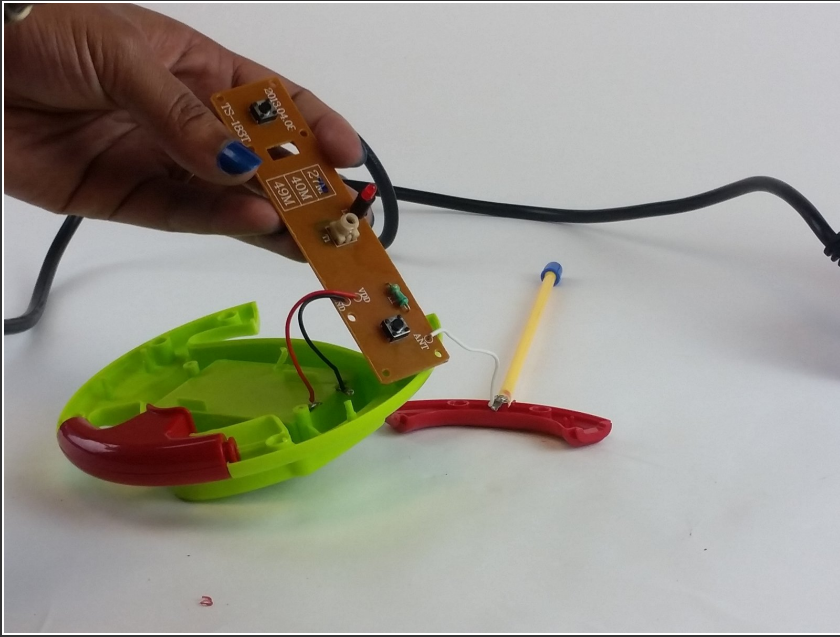
- Hold the remote control with the backside facing you and, using the Phillips #00 screwdriver, unscrew the six 6.5 mm screws on the back of the controller that hold it together.

Step 2



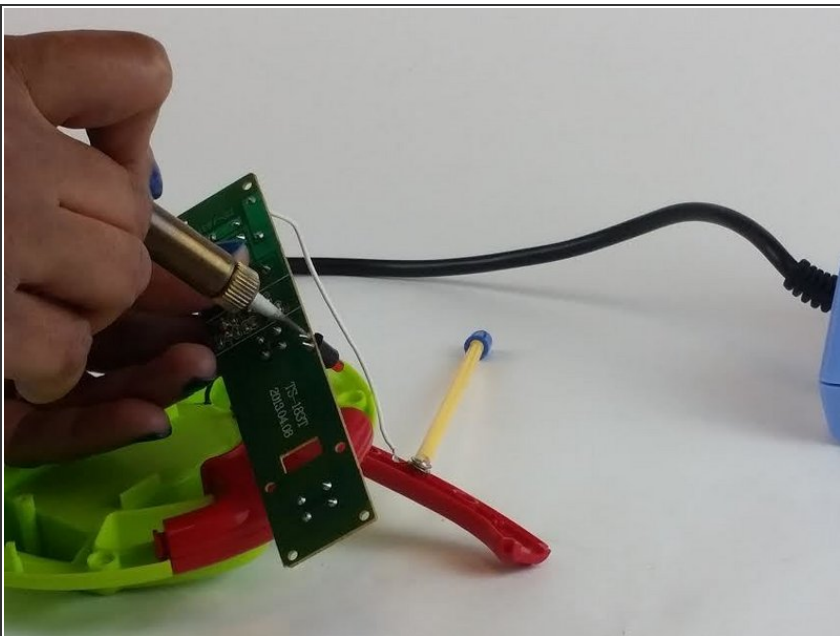
- Open the remote control.

Step 3



- Lift the motherboard to separate it from the remote control.

Step 4



- To remove the light, use a soldering iron to heat the solder to a liquid and loosen the leads.
- While the solder is liquid, lightly pull on the LED to remove it from the motherboard.

⚠ The soldering iron will get very hot while it's in use. Be sure to place it on top of a heat protected surface and be careful not to touch the operational end.

To reassemble your device, follow these instructions in reverse order.