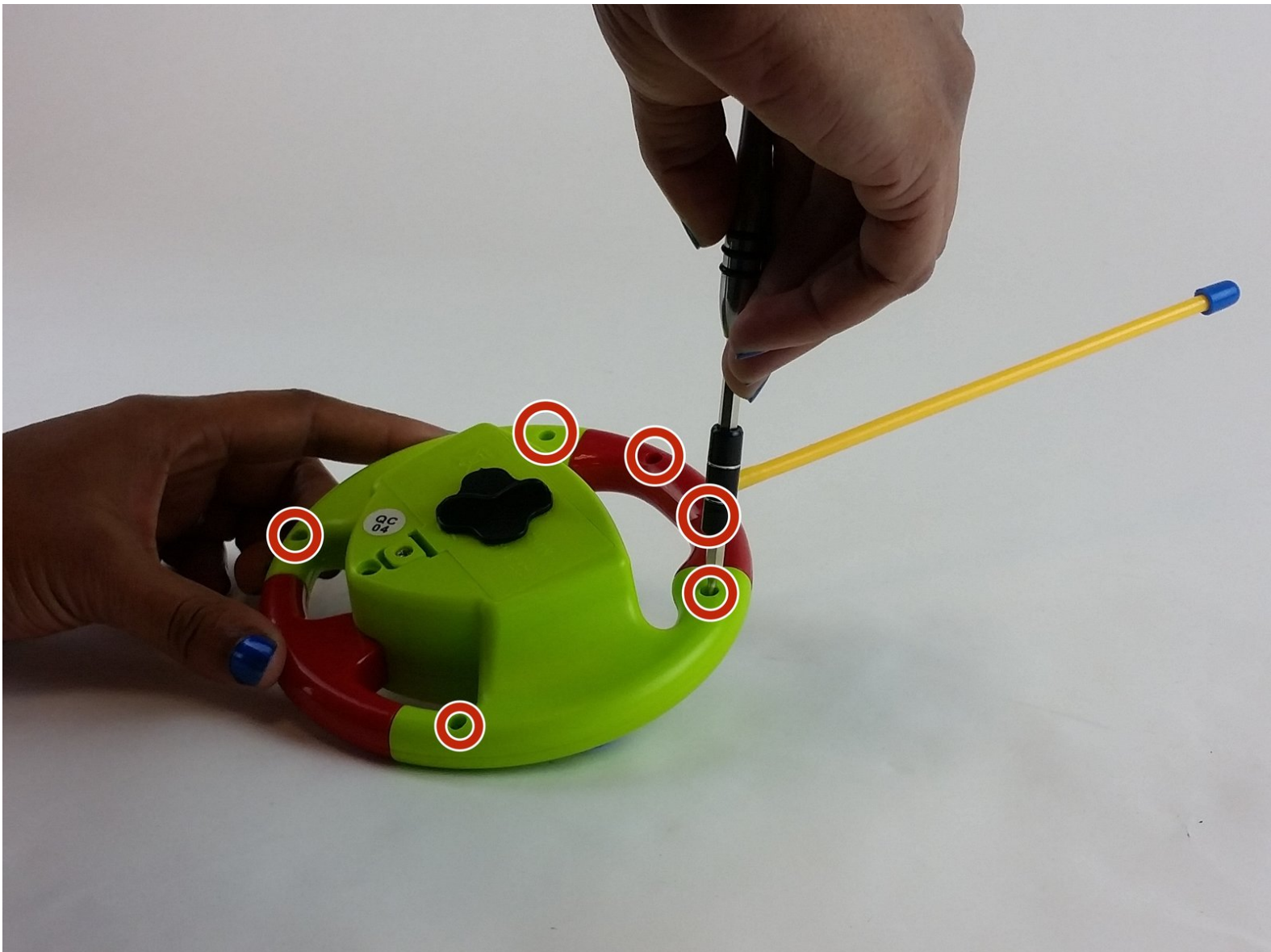




Beiens Cartoon RC Race Car Remote Control Antenna Replacement

This guide will help you take a part and replace the antenna in your Beiens Cartoon RC Race Car remote.

Written By: Amber Ashley

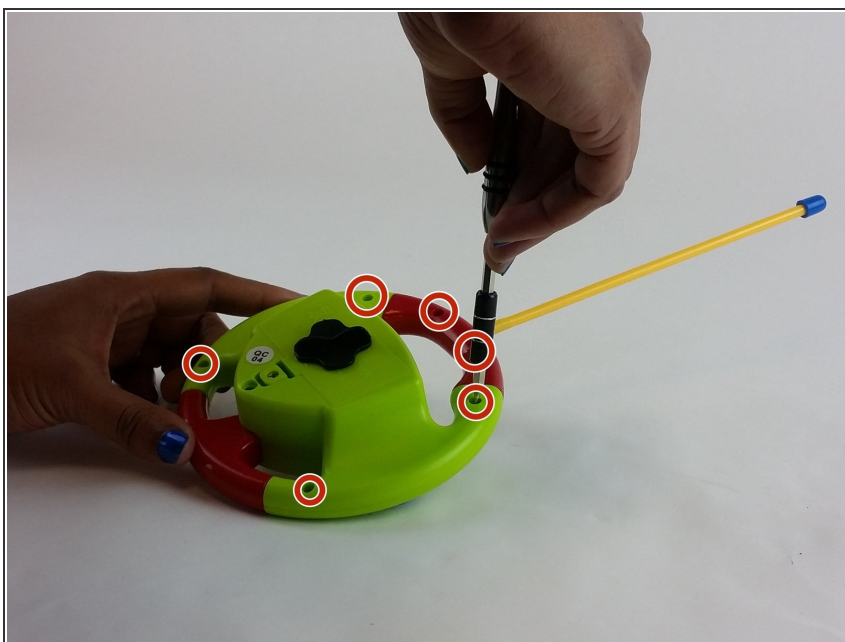




TOOLS:

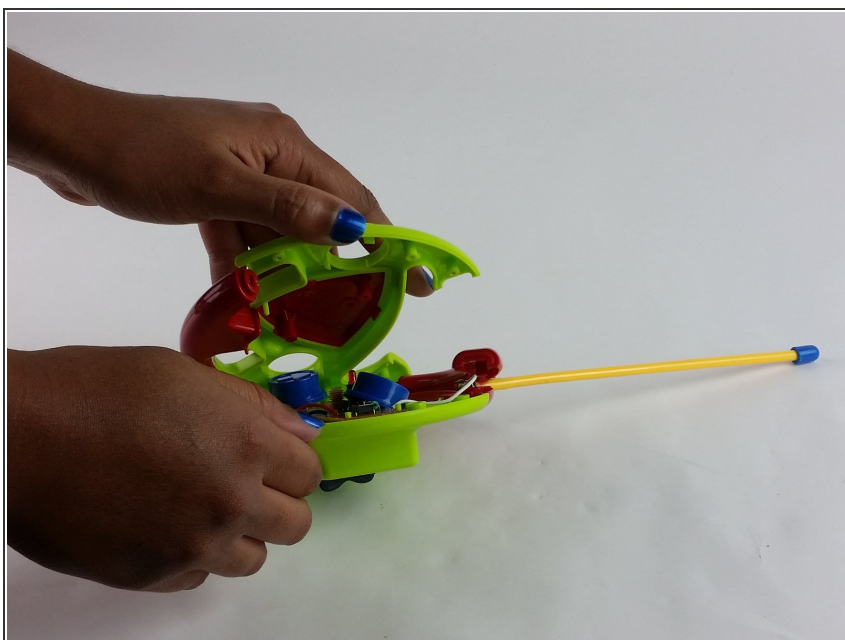
- [Phillips #00 Screwdriver](#) (1)
-

Step 1 — Remote Control Antenna



- Hold the remote control with the backside facing you and, using the Phillips #00 screwdriver, unscrew the six 6.5 mm screws on the back of the controller that hold it together.

Step 2



- After unscrewing the six screws, pull the the device apart to reveal where the antenna meets the long white wire.

Step 3



- Remove the 4.5 mm screw on the remote that holds the antenna in place to set it loose.

Step 4



- Replace the old antenna with a new one. Attach the new antenna to the white wire and screw it in place.

To reassemble your device, follow these instructions in reverse order.