



Belkin NetCam HD Case Replacement

This guide shows how to open the Belkin NetCam HD+ if you need to replace anything inside.

Written By: Destinie DiazVerdejo



INTRODUCTION

This guide walks you through how to open the device on the NetCam.



TOOLS:

- [iFixit Opening Tools](#) (1)
-

Step 1 — Case



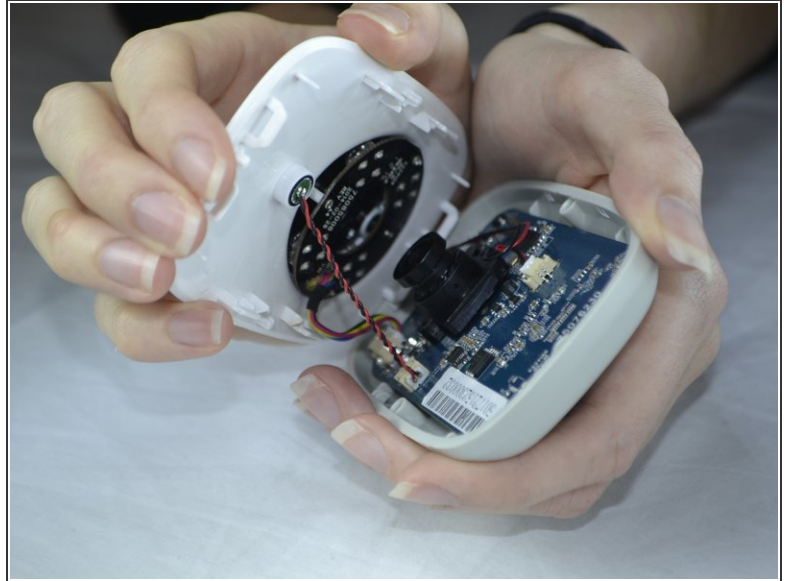
- Use a wrench to loosen up the stand from the back in order to hold the NetCam more comfortably.

Step 2



- Work a plastic opening tool into the seam and pry the face plate away from the back panel.

Step 3



- Use pressure to separate the covers.

⚠ When pulling the device apart, separate from the bottom up in order to avoid pulling the wiring at the top apart.

To reassemble your device, follow these instructions in reverse order.