



Belkin NetCam HD Speaker Replacement

This guide will show you the steps in replacing the speaker in your Belkin NetCam HD+.

Written By: Destinie DiazVerdejo



INTRODUCTION

When you know your phone connection with the camera is good, but no sound is going through. The speaker could have gone out and needs to be replaced.

TOOLS:

- [iFixit Opening Tools](#) (1)
 - [Phillips #0 Screwdriver](#) (1)
 - [Tweezers](#) (1)
 - [Adjustable Wrench](#) (1)
-

Step 1 — Case



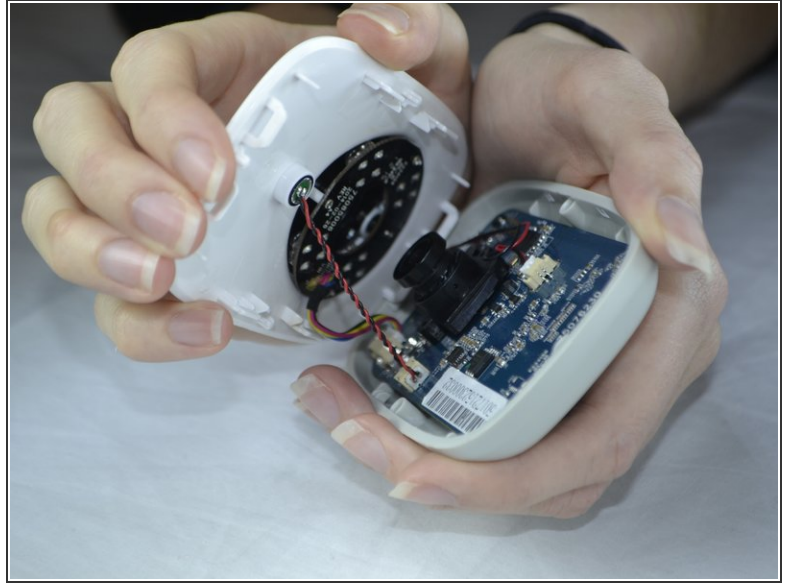
- Use a wrench to loosen up the stand from the back in order to hold the NetCam more comfortably.

Step 2




- Work a plastic opening tool into the seam and pry the face plate away from the back panel.

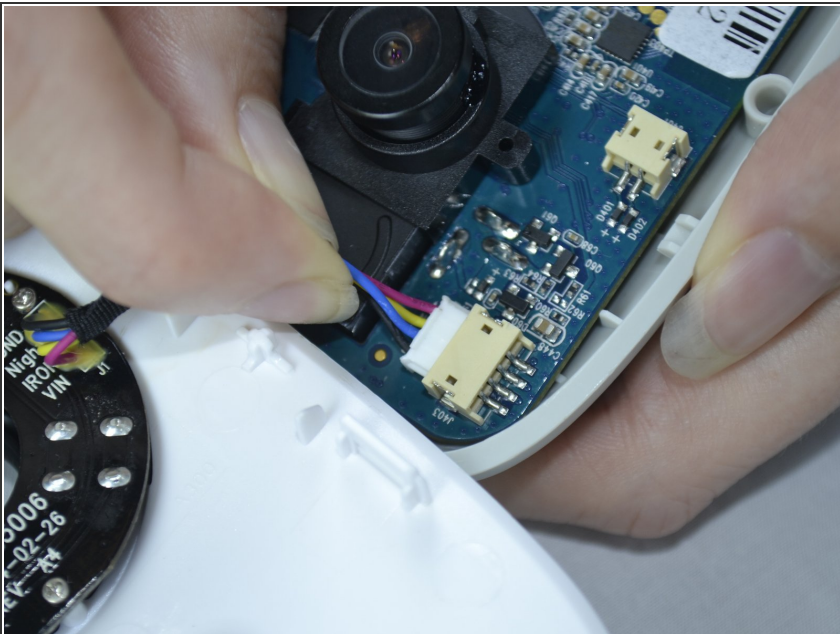
Step 3



- Use pressure to separate the covers.

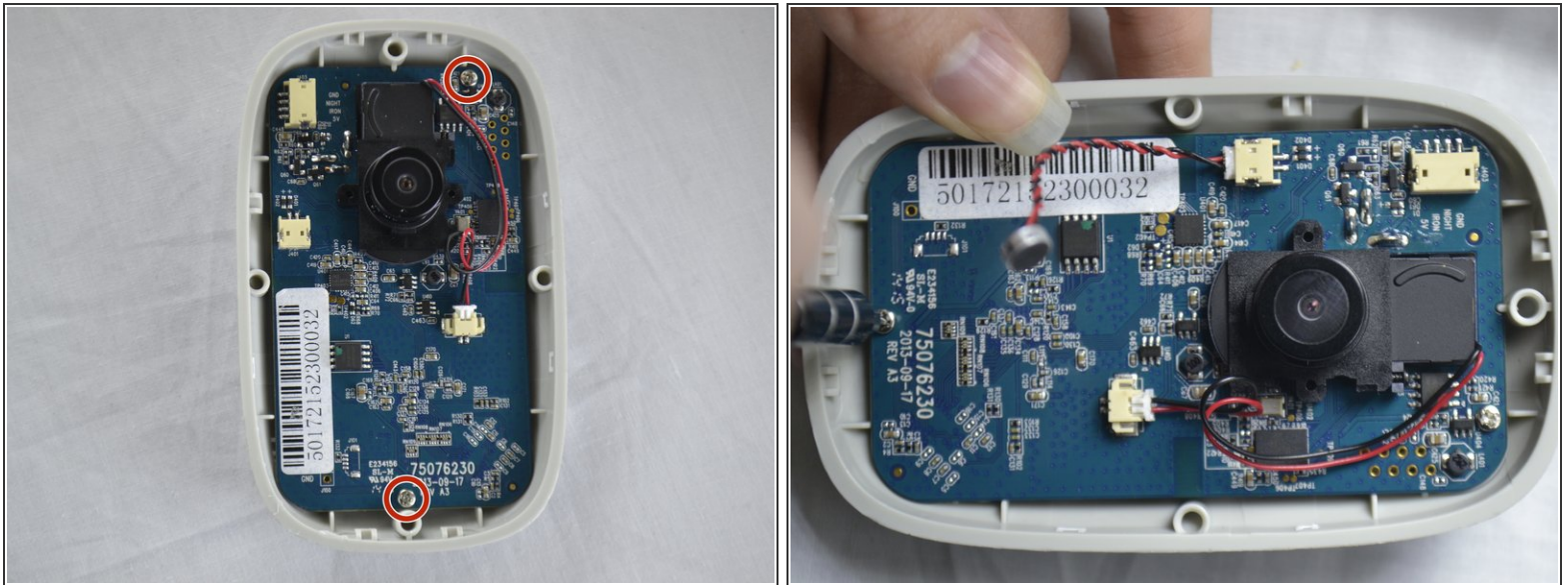
 When pulling the device apart, separate from the bottom up in order to avoid pulling the wiring at the top apart.

Step 4 — Front Casing



- Carefully use your fingers to gently pull out the white attachment from the tan colored part.

Step 5 — Speaker



- Use a Phillips #0 screwdriver to take out the two 1.2 mm screws on the board.

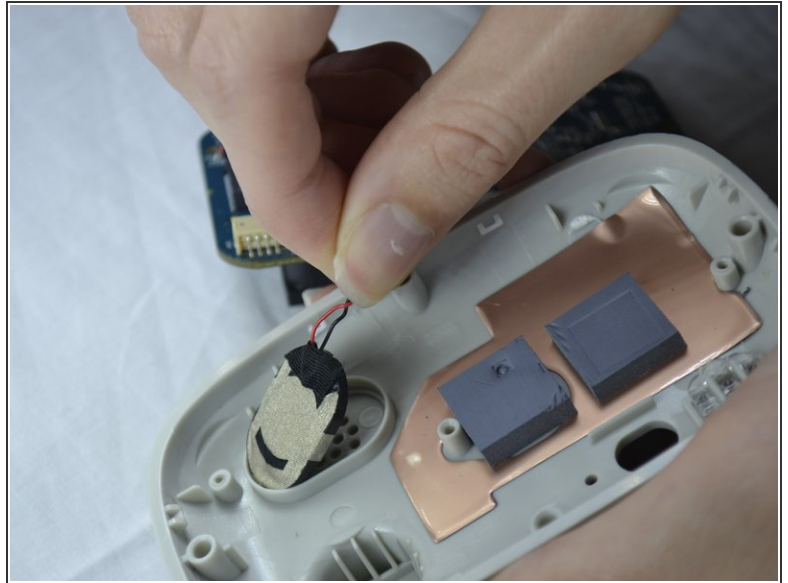
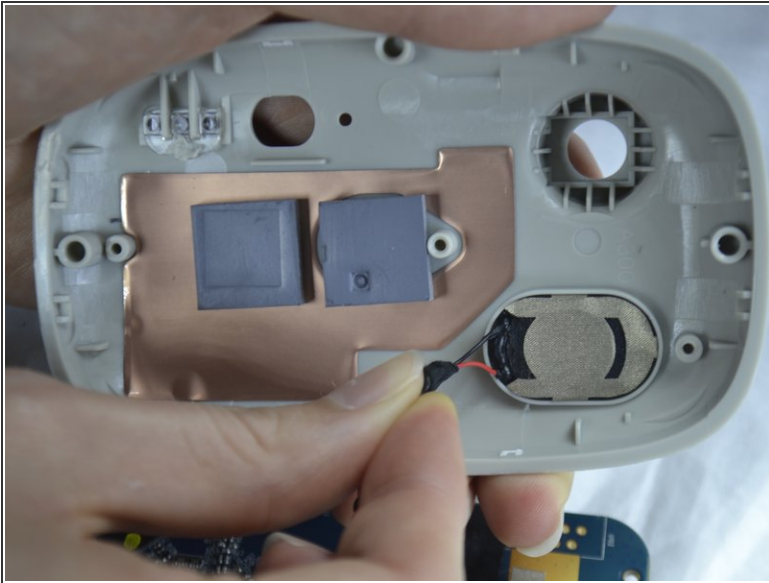
Step 6



- With your fingers, pull the circuit board out of the back casing.

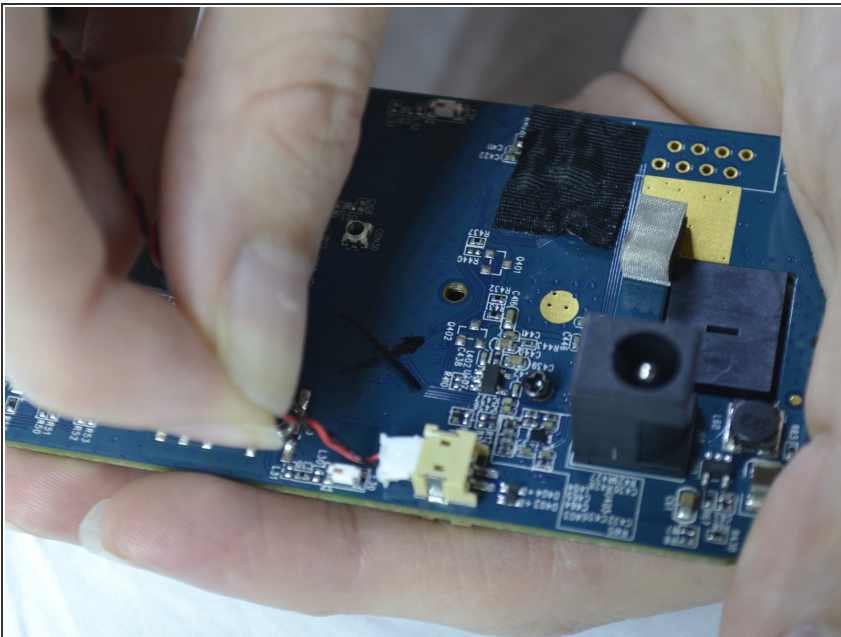
⚠ When pulling the board up be sure to do so carefully so you do not break the cord which is attached on the back side.

Step 7



- Gently pull the speaker out of the holder from the back of the cover.

Step 8



- The speaker wires are attached with the board. It can be unattached gently by pulling out the white attachment from the port.

To reassemble your device, follow these instructions in reverse order.