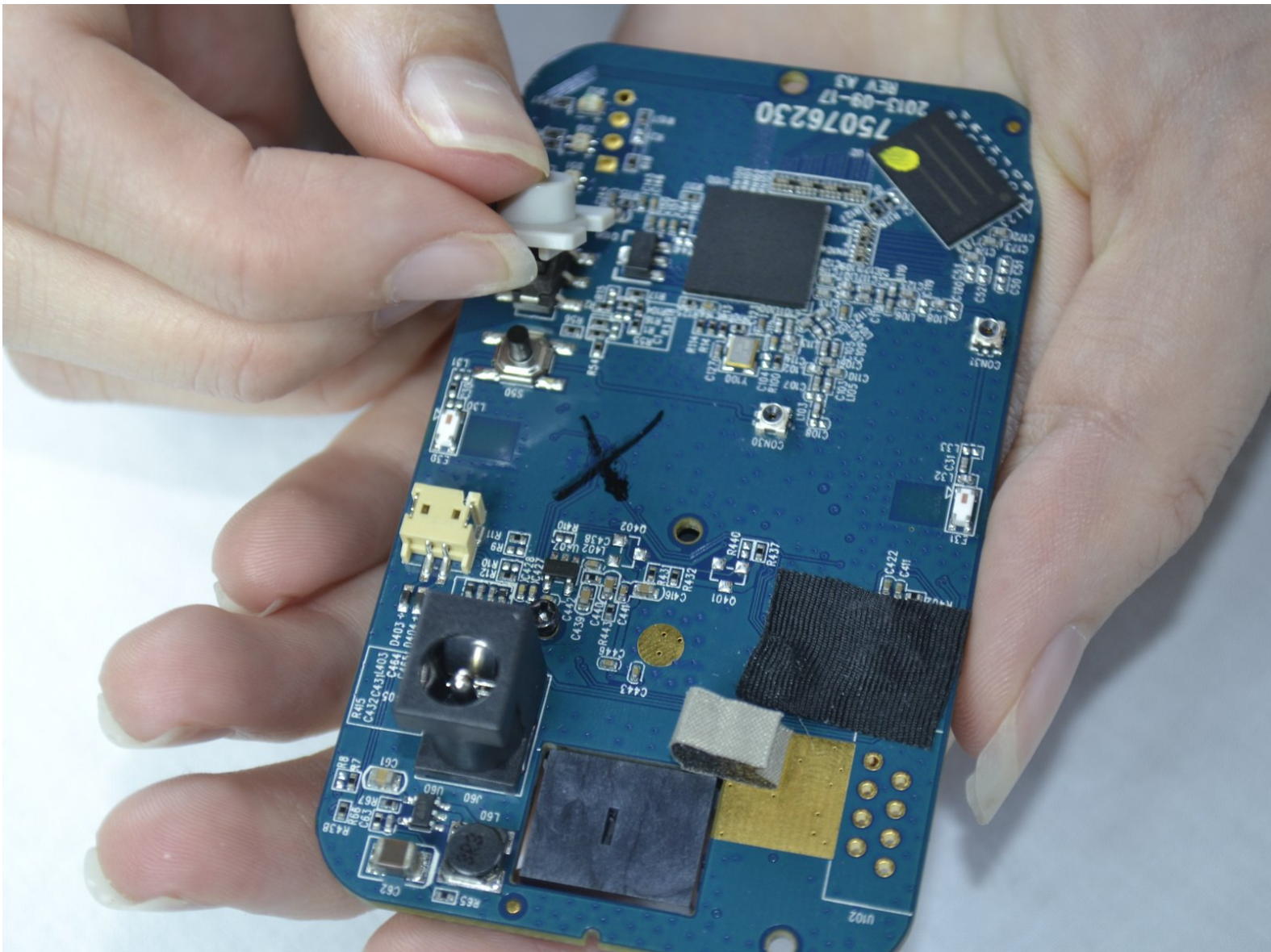




# Belkin NetCam HD Switch Cover Replacement

This guide will show you the steps in replacing the switch cover in your Belkin NetCam HD+.

Written By: Destinie DiazVerdejo



---

# INTRODUCTION

This guide walks you through how to replace the switch cover on the NetCam.

---

## TOOLS:

- [iFixit Opening Tools](#) (1)
  - [Adjustable Wrench](#) (1)
  - [Phillips #0 Screwdriver](#) (1)
  - [Tweezers](#) (1)
-

## Step 1 — Case



- Use a wrench to loosen up the stand from the back in order to hold the NetCam more comfortably.

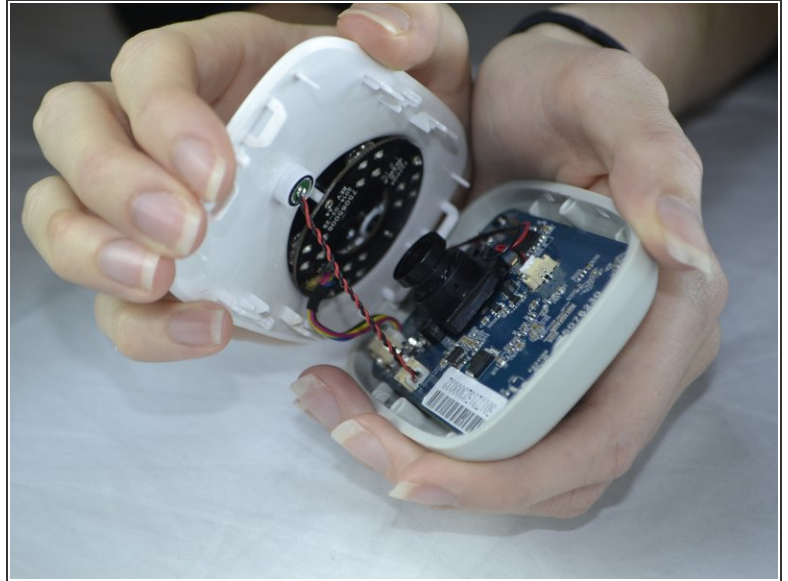
## Step 2



- Work a plastic opening tool into the seam and pry the face plate away from the back panel.



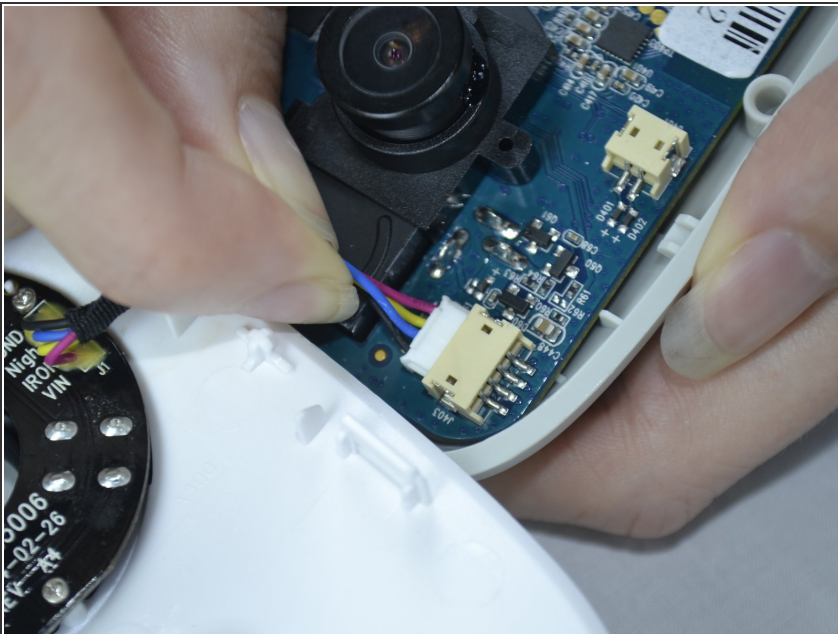
### Step 3



- Use pressure to separate the covers.

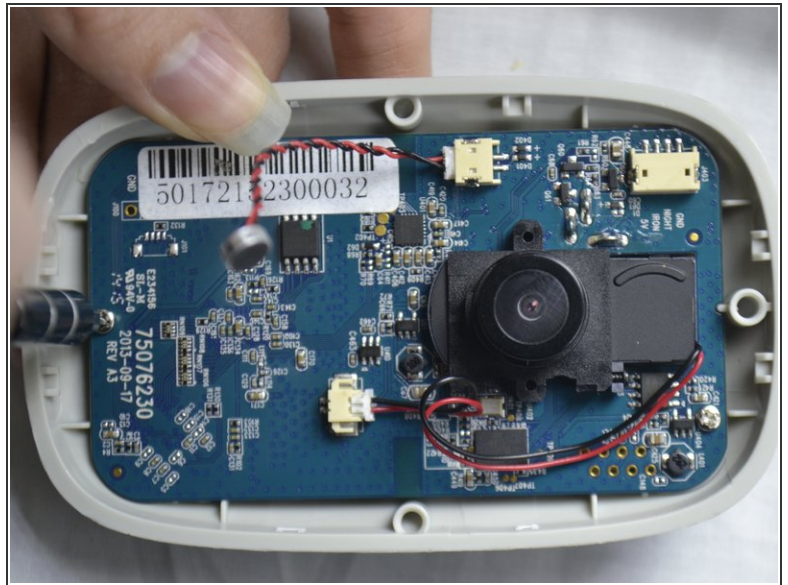
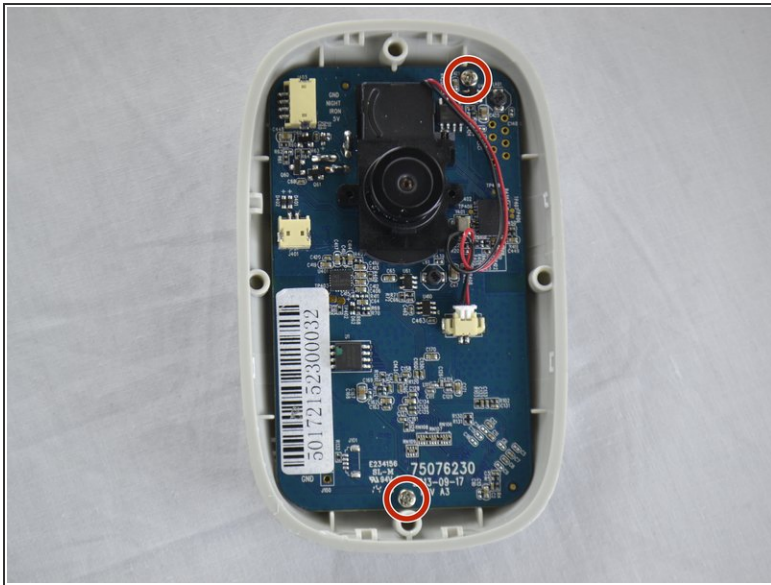
⚠ When pulling the device apart, separate from the bottom up in order to avoid pulling the wiring at the top apart.

### Step 4 — Front Casing



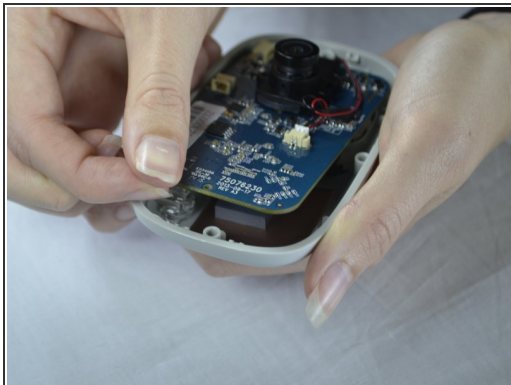
- Carefully use your fingers to gently pull out the white attachment from the tan colored part.

## Step 5 — Speaker



- Use a Phillips #0 screwdriver to take out the two 1.2 mm screws on the board.

## Step 6

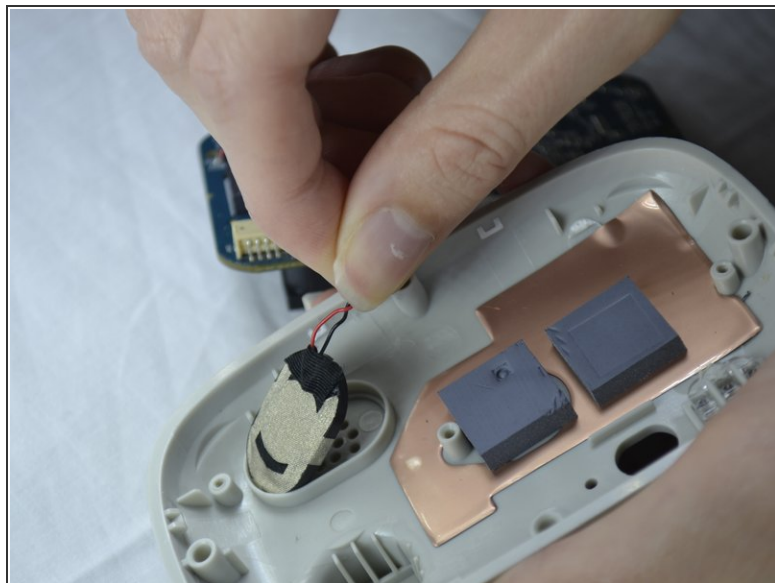
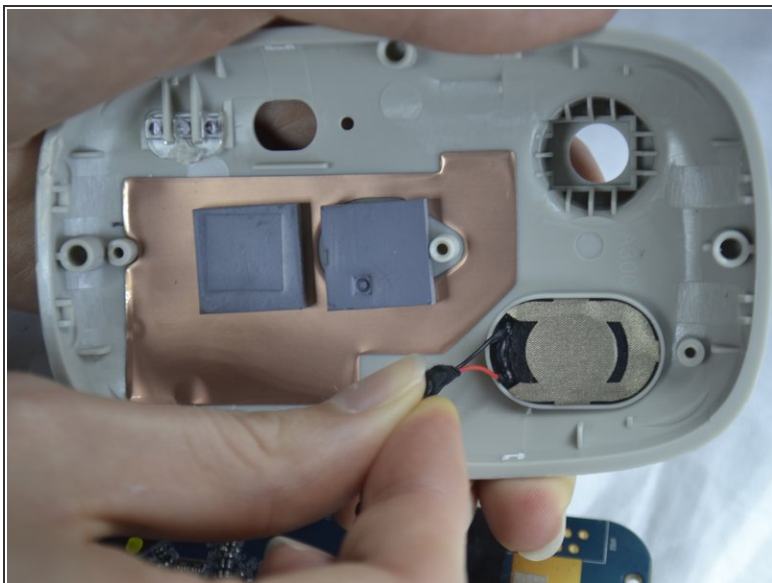


- With your fingers, pull the circuit board out of the back casing.

⚠ When pulling the board up be sure to do so carefully so you do not break the cord which is attached on the back side.

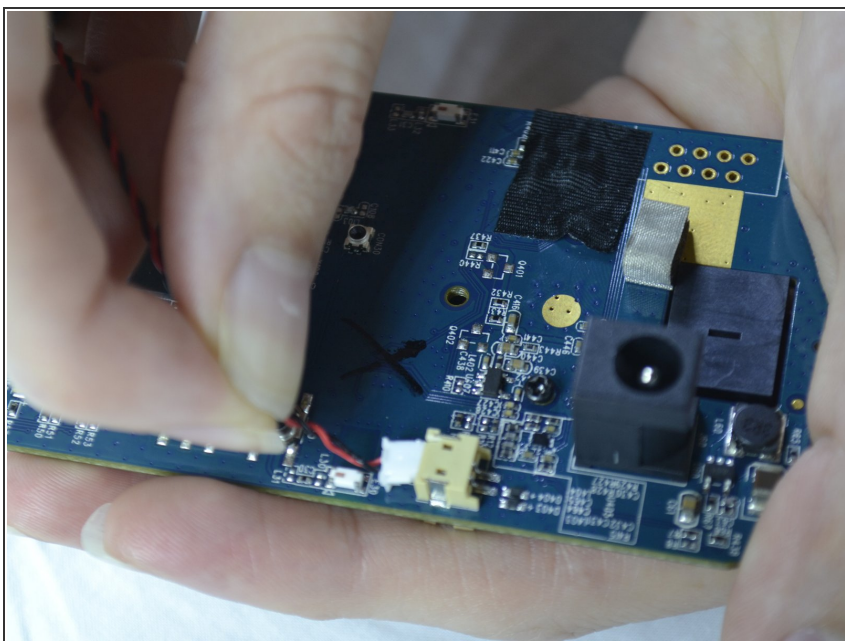


## Step 7



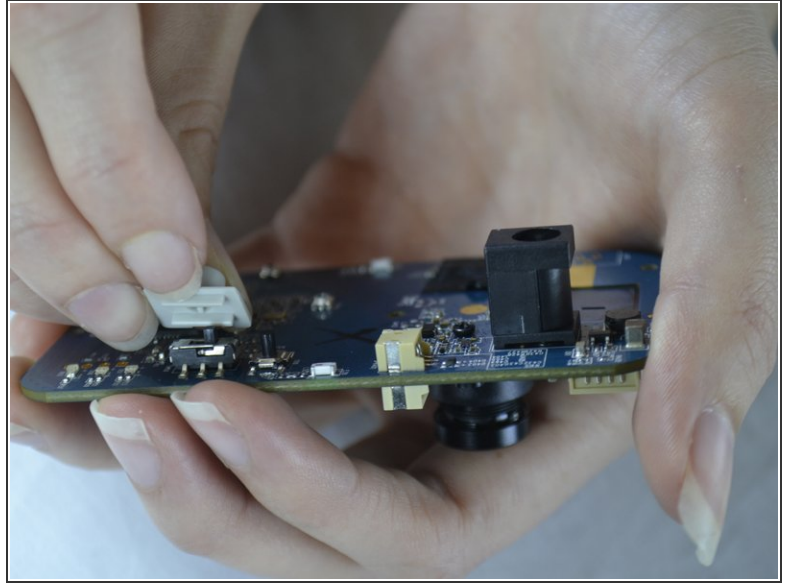
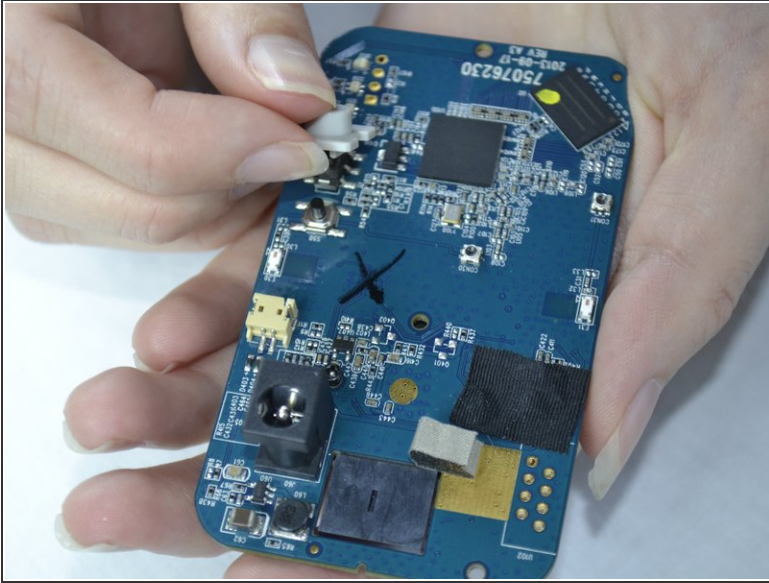
- Gently pull the speaker out of the holder from the back of the cover.

## Step 8



- The speaker wires are attached with the board. It can be unattached gently by pulling out the white attachment from the port.

## Step 9 — Switch Cover



- On the back of the board pull the switch slowly upward to take it off.

To reassemble your device, follow these instructions in reverse order.