



Bella 4-Slice Toaster Oven Timer Replacement

This guide walks users through the process of removing a faulty timer.

Written By: Everett Dimenna



INTRODUCTION

If the timer fails, it is easy to replace and fix your toaster using this guide.



TOOLS:

- [Phillips #2 Screwdriver](#) (1)
 - [Spudger](#) (1)
-

Step 1 — Outer Shell



- Remove five 11.6 mm Phillips #2 screws from the rear of the device.

Step 2



- Open the front glass door of the toaster oven.

Step 3



- Locate retaining screw on the upper-middle portion of the door frame.

Step 4



- Remove one 21.9 mm Phillips #2 retaining screw from upper-middle portion of door frame.

Step 5



- Flip toaster onto back panel with feet facing forward.

Step 6



- Use spudger to pry the grey rubber inserts from the black plastic feet.

Step 7



- Remove four 13.7mm Phillips #2 screws from black plastic feet to separate the cover from the device.

Step 8



- Lift the black outer cover off of the toaster

Step 9 — Timer



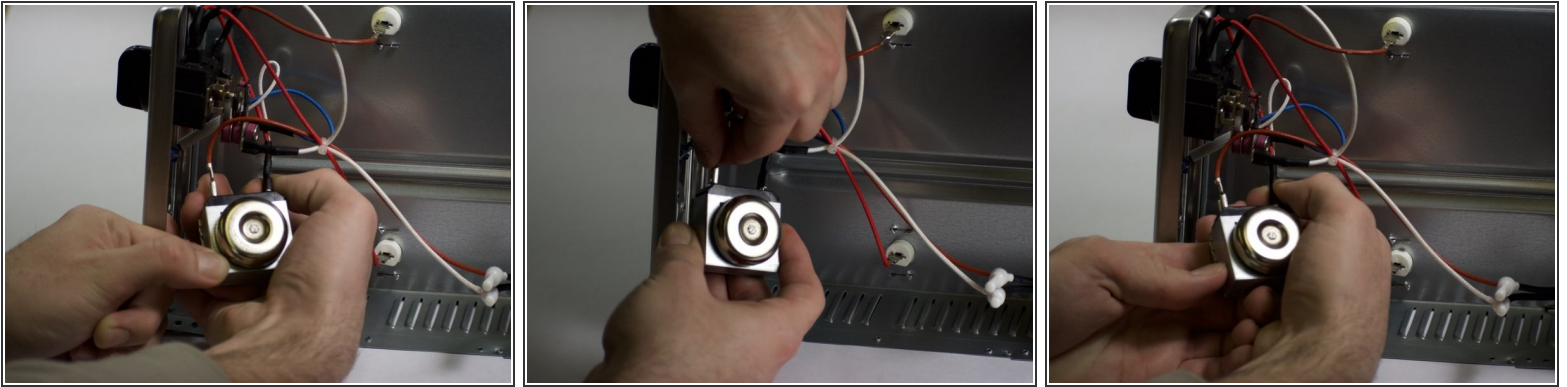
- Using a plastic spudger, gently pry the black plastic timing dial away from the face of the toaster.

Step 10



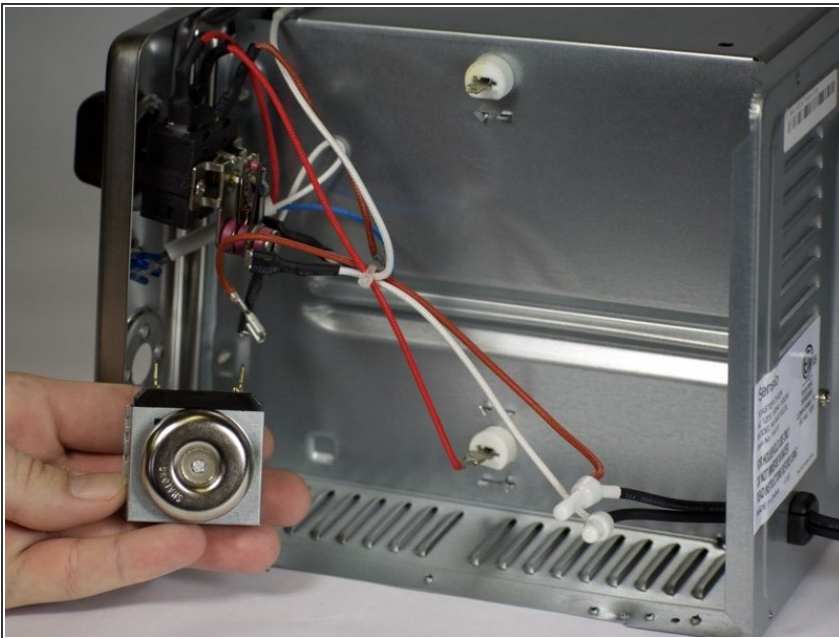
- Remove two 5.91 mm #2 Phillips screws which secure the timer to the toaster.

Step 11



- Inside the device, unplug the red and black wires from the top of the timer.

Step 12



- Remove timer from device interior.

To reassemble your device, follow these instructions in reverse order.