



# Bem Wireless HL2739B Charging Base Battery Replacement

This guide is to instruct users how to remove and replace the charging base battery in the Bem Wireless HL2739B Speaker.

Written By: Ryan McQueeney



## INTRODUCTION

Is your auxillary charging base no longer holding a charge. Dont forget the charging basics and follow this guide to replace your auxillary charger!

---

### TOOLS:

- [iFixit Opening Tools](#) (1)
  - [Tweezers](#) (1)
  - [Metal Spudger](#) (1)
  - [J1 Screwdriver Bit](#) (1)
-

## Step 1 — Charging Base Battery



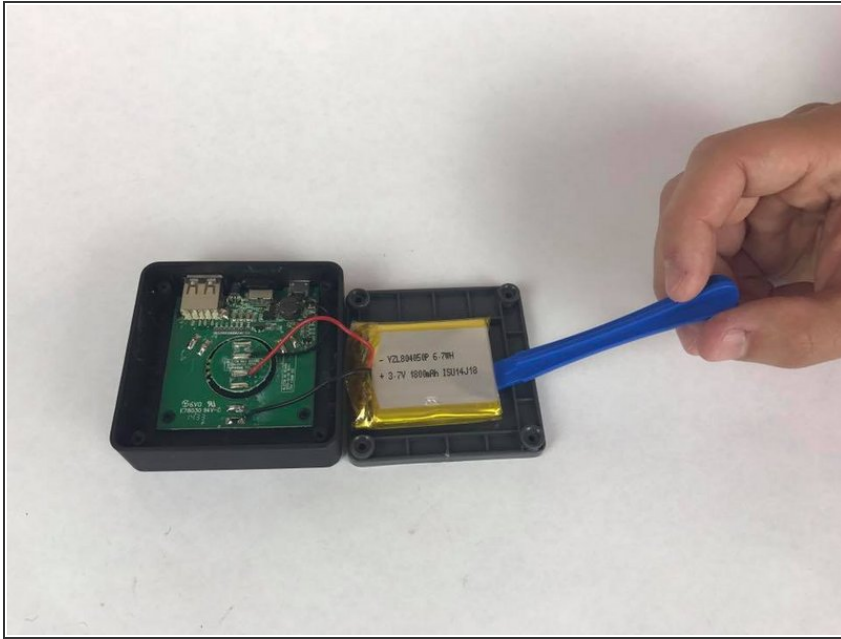
- Peel the rubber cover back from the corner of the auxiliary charging base to reveal the screw.

## Step 2



- Use the J1 bit attached to the screwdriver to remove the four 10mm screws from the bottom of the auxiliary charging base.

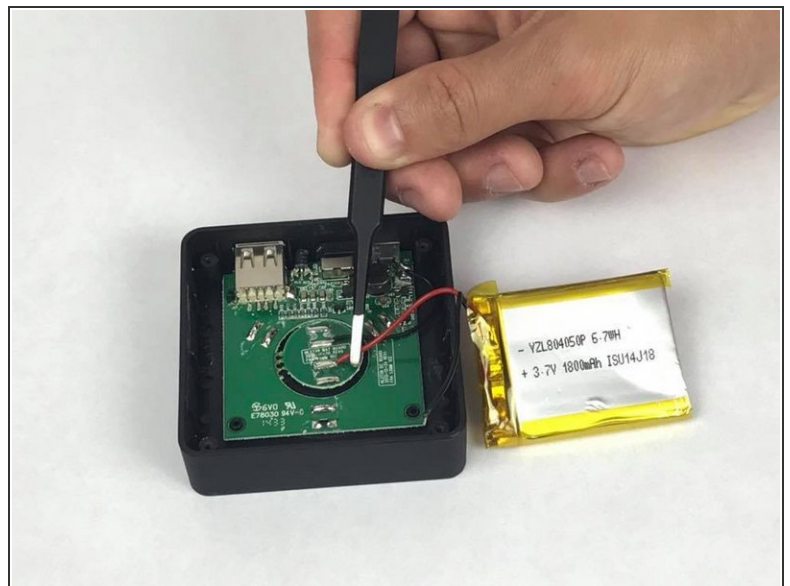
### Step 3



- Lift the bottom cover away from the rest of the auxiliary charging base.

⚠ There are wires connecting the battery and cover to the rest of the auxiliary charging base. Be careful when removing the auxiliary charging base cover.

### Step 4



- Using the tweezers, pull the wires from the auxiliary charging base's internal chip.

⚠ Be careful not to damage the chip when you remove the wires.

i It will likely require soldering to reassemble the auxiliary charging base after this step.

To reassemble your device, follow these instructions in reverse order.