



# BenQ HT1075 Projector Blower Fan Replacement

This guide shows how to properly replace the projector's back blower fan.

Written By: Gabriela Remulla



## INTRODUCTION

Similar to the main fan, the blower fan is essential in preventing the projector from overheating. Since projectors are prone to producing more heat than other electronic devices, the addition of this blower fan helps in maintaining a low temperature. This guide will show how to replace the blower fan, but it is also important to keep the fan clean from debris and particles that may potentially keep it from running smoothly.

**Note that the BenQ HT1075 Projector Lamp Replacement is a prerequisite since damage to the lamp is hazardous to both the projector and user.**



### TOOLS:

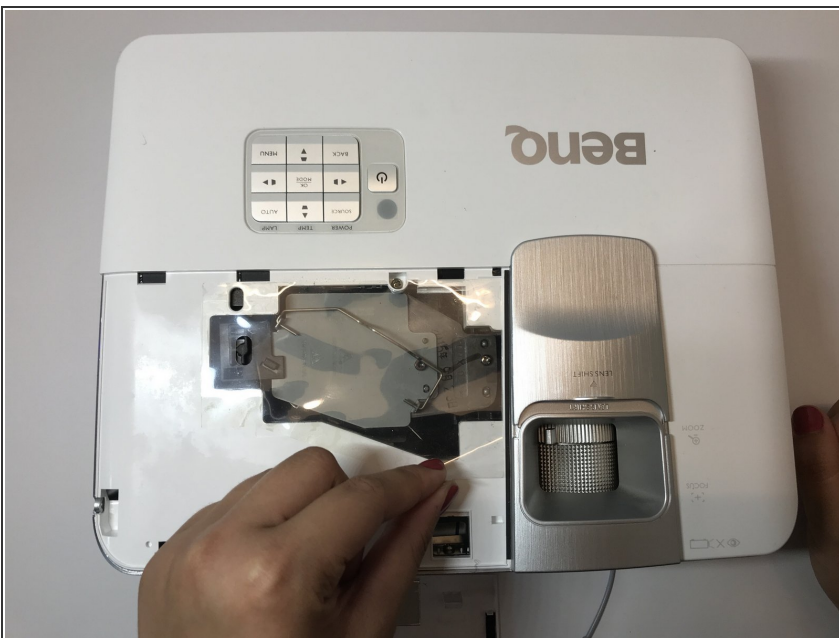
- [Phillips #1 Screwdriver](#) (1)
  - [iFixit Opening Tools](#) (1)
  - [5mm Nut Driver](#) (1)
  - [Phillips #2 Screwdriver](#) (1)
-

## Step 1 — Lamp



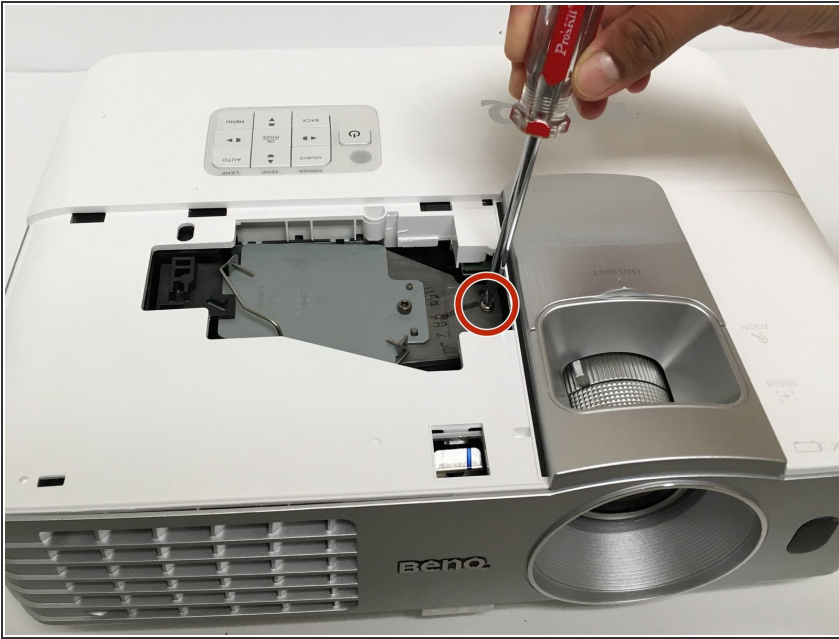
- Loosen the 2.5 mm Phillips #1 screw that holds the top assembly in place using a Philips #1 (PH1) screwdriver. This will enable you to lift and slide off the top cover.
- Fully remove the top cover in order to get to the lamp housing.

## Step 2



- Carefully peel off the adhesive film covering the lamp housing.

## Step 3



- Using a Phillips #1 (PH1) screwdriver, loosen and remove the single 2.5 mm Phillips #1 screw that secures the lamp housing to the projector.

## Step 4



- Remove the lamp from the projector by pulling on the lamp handle.
- Apply more force on the side opposite of the newly removed screw as you pull the lamp out.

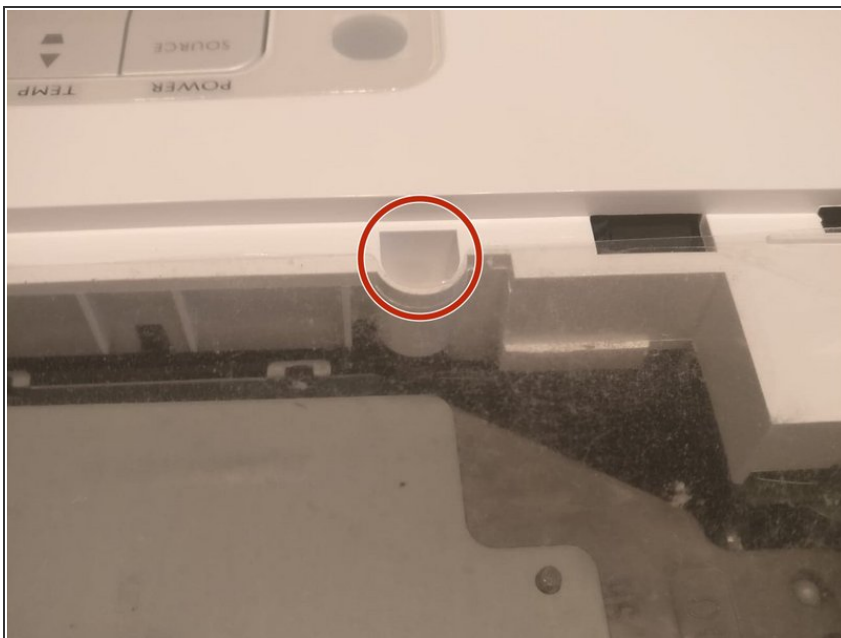


## Step 5 — Circuit Board



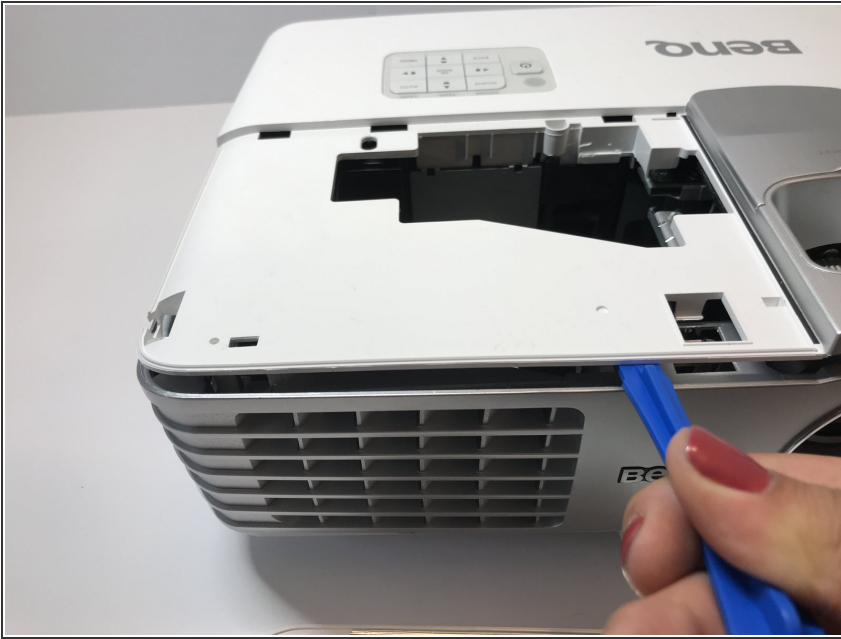
- Turn the projector over and remove the five 9.5 mm Phillips #1 screws that hold the back cover with a Phillips #1 (PH1) screwdriver.

## Step 6 — Remove the 6th screw holding the top cover



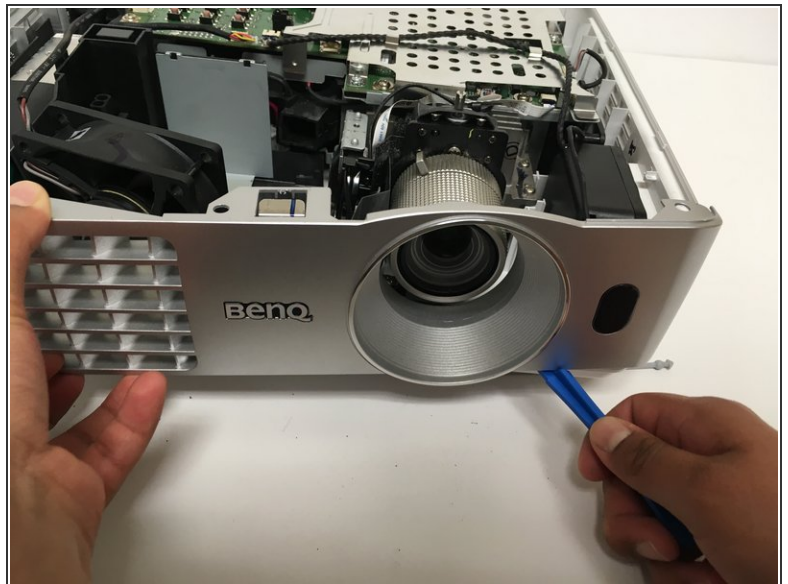
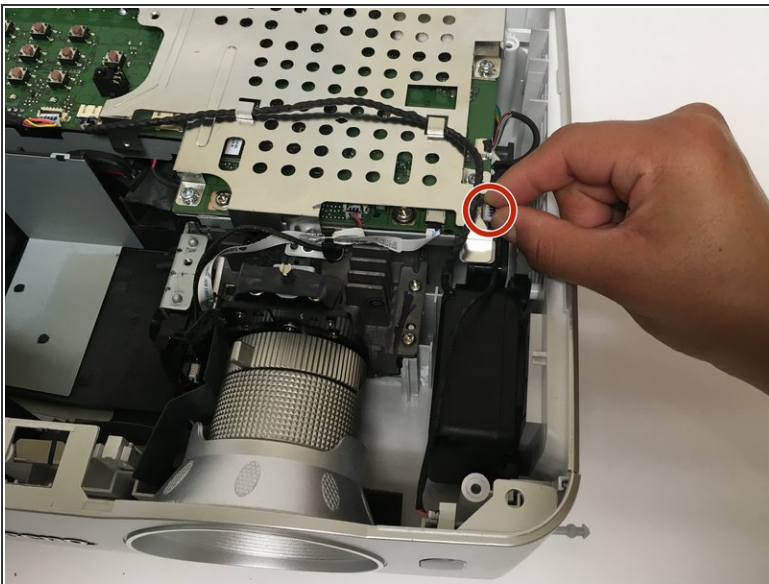
- Flip the projector and remove the 6th and last screw.

## Step 7



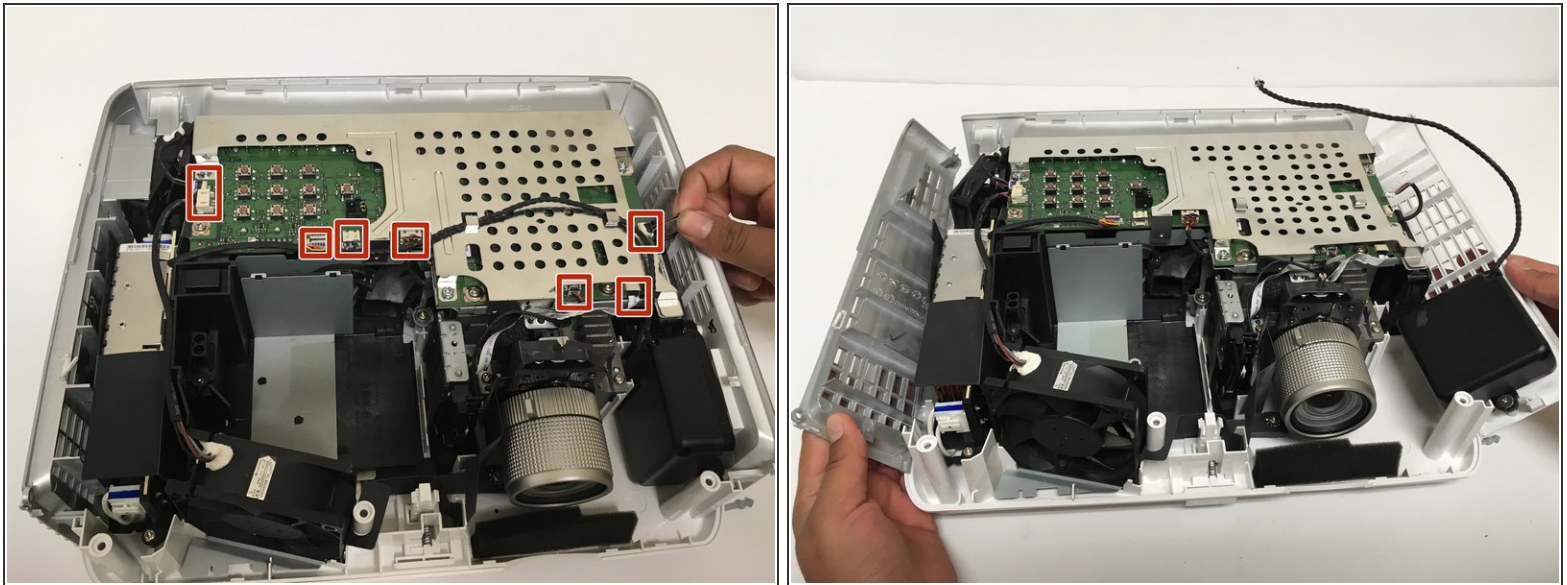
- Using an opening tool, remove the top cover by first loosening its top cover.

## Step 8



- Unplug the wire that connects the front cover to the circuit board.
- Now use the opening tool to pry the front cover from the platform.
- Gently pull the top cover from the rest of the frame.

## Step 9



- To prevent potential for electrical damage, disconnect any wires connected to the circuit board.
- Using the opening tool, loosen the sides of the platform. Then gently pull them off from the projector components.

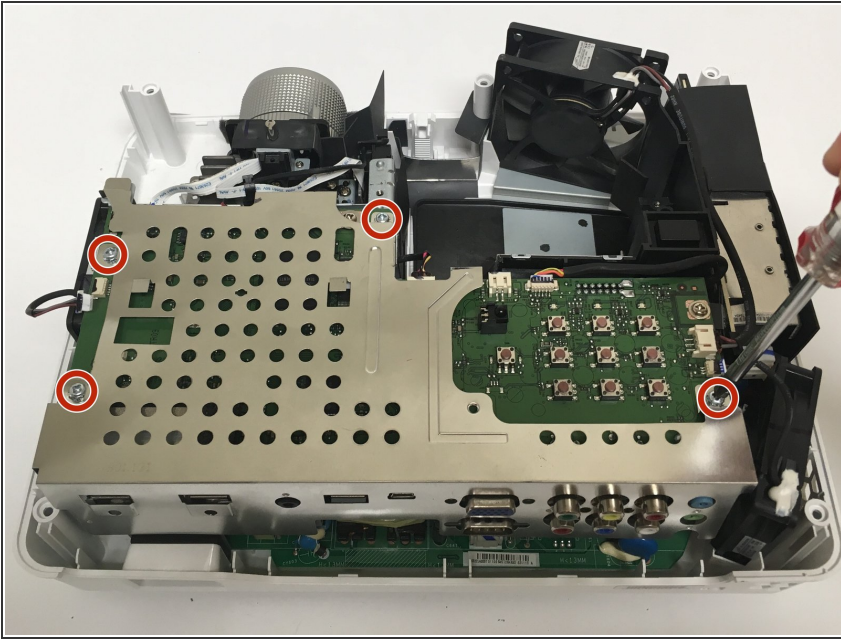
## Step 10



- Remove these four 8.5 mm Phillips #1 screws using a Phillips #1 (PH1) screwdriver.
- Afterwards, use a 5mm nut driver to remove the four remaining screws.
- Use the opening tool to loosen the back cover then pull it off.

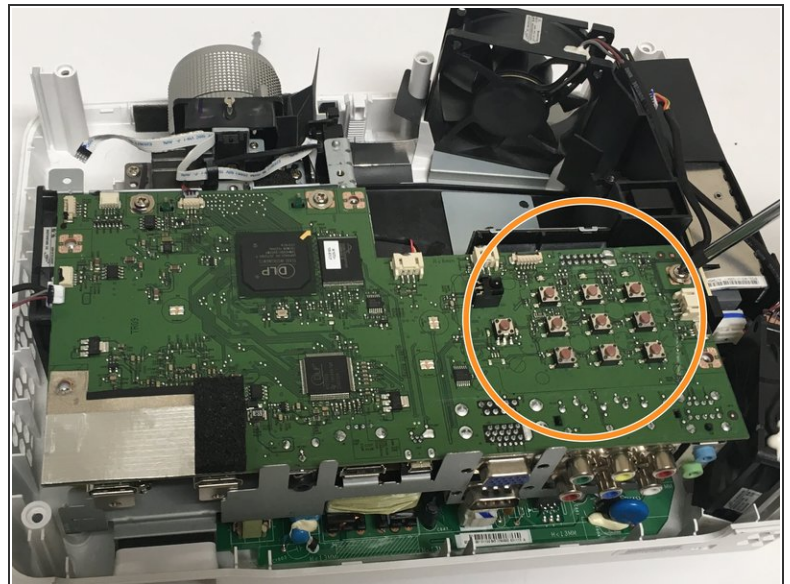
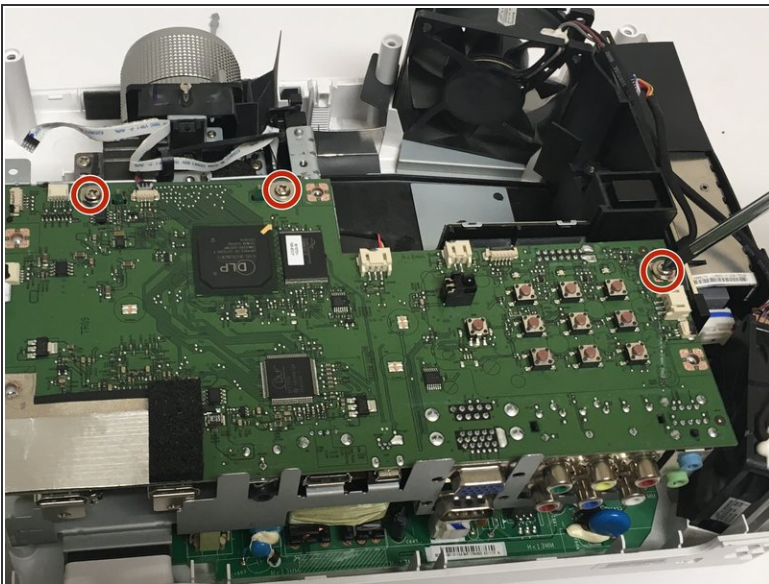


## Step 11



- With a Phillips #1 (PH1) screwdriver, remove the four 6.3 mm Phillips screws that hold the metal casing on top of the circuit board.
- Remove the metal casing.

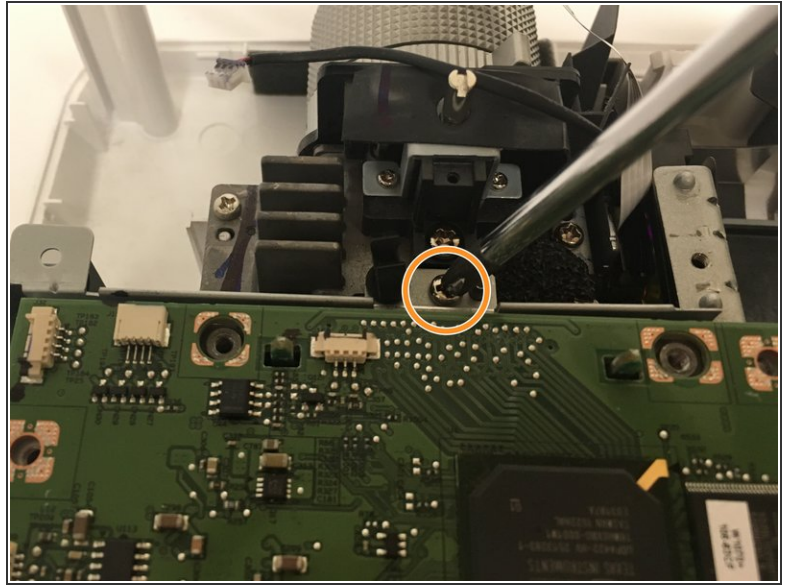
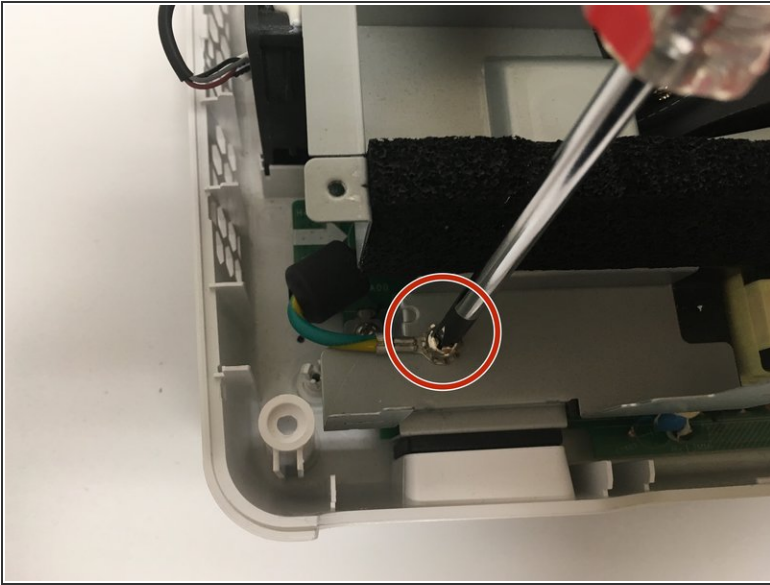
## Step 12



- Using the Phillips #1 (PH1) screwdriver, remove the three 6.3 mm Phillips #1 screws holding down the circuit board.
- Carefully pull the circuit board from the frame, adding force to the area where the pushbuttons are located.

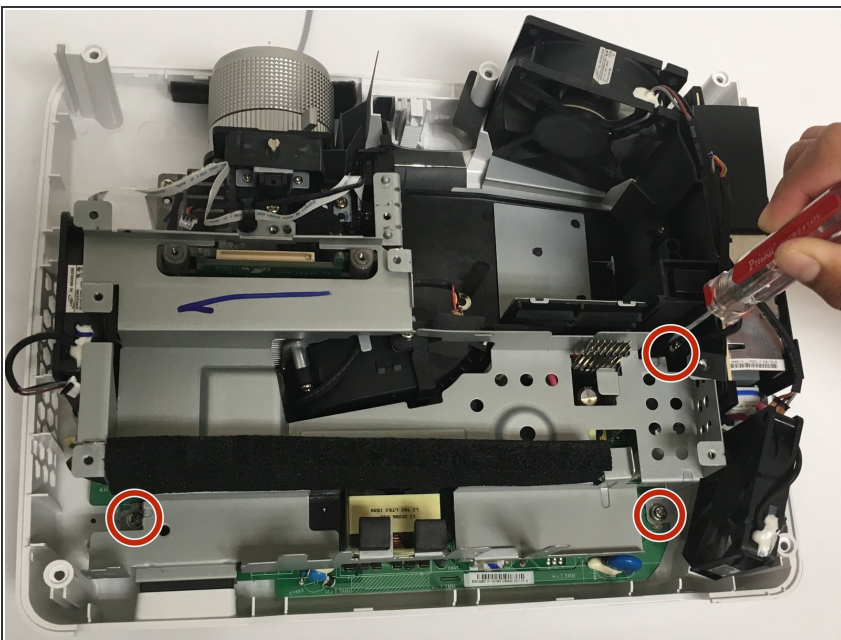


## Step 13 — Blower Fan



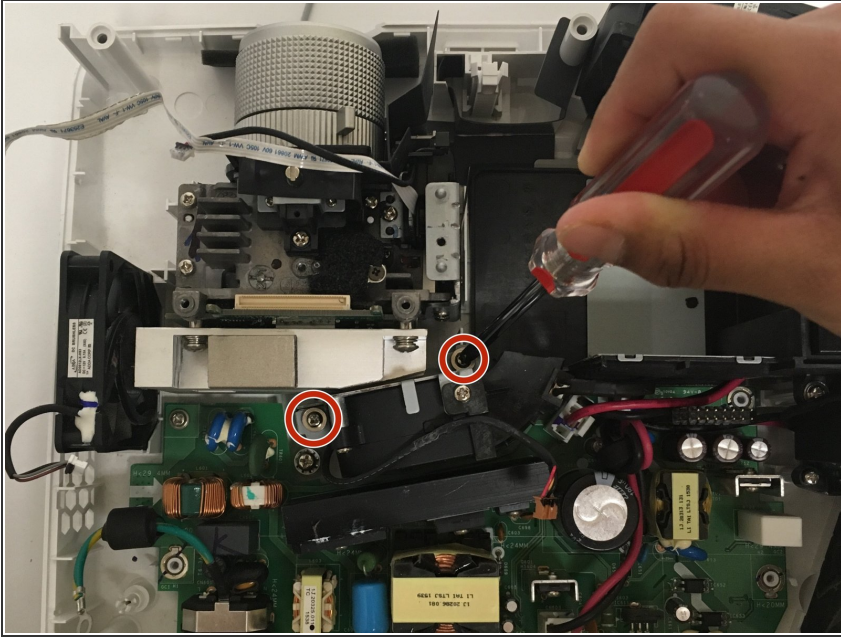
- Unscrew the Philips #1 (PH1) screw securing the green wire located at the bottom left of the metal casing.
- Remove a second Philips #1 (PH1) screw that holds down the top of the metal casing located near the back of the projector's lens.

## Step 14



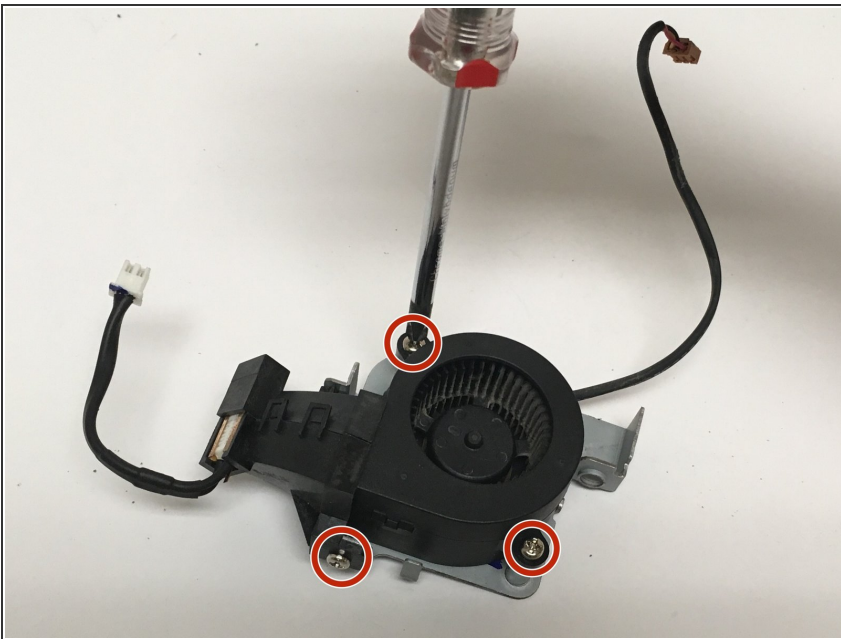
- Remove three Philips #2 (PH2) screws that attach the metal casing to the platform.
- Remove the metal casing by pulling it straight up.

## Step 15



- Remove the two Philips #2 (PH2) screws that hold down the black blower fan, located at top center of the circuit board.

## Step 16



- Remove the three Philips #1 (PH1) screws that attach the blower fan to the metal cover.
- Gently remove the blower fan by pulling it directly upwards from the base.

To reassemble your device, follow these instructions in reverse order.