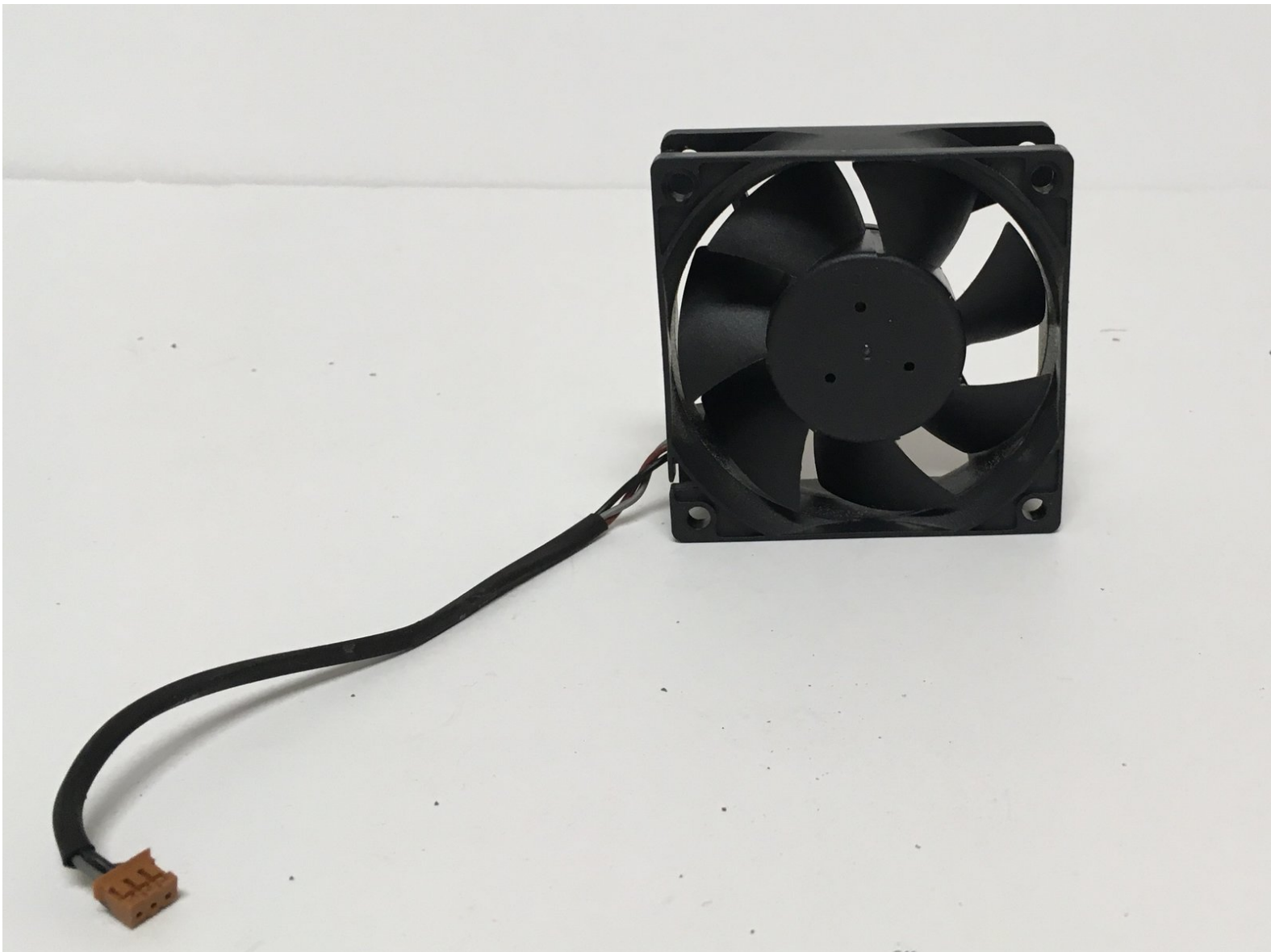




# BenQ HT1075 Projector Fan Replacement

This replacement guide shows how to properly replace the projector's fan.

Written By: Gabriela Remulla



## INTRODUCTION

One of the most common problem associated with the BenQ HT1075 projector is overheating. Since all electronic equipment depend on the transfer of energy, components will eventually warm during run time. This is especially the case for projectors which also use bulbs that produce even more heat. Therefore, it is critical to keep a functioning fan at all times. This guide shows how to replace the projector fan, but it is also important to keep the fan clean from dust and particles that can potentially slow it down.

**Note that the BenQ HT1075 Projector Lamp Replacement is a prerequisite since damage to the lamp is hazardous to both the projector and user.**

---

### TOOLS:

- [iFixit Opening Tools](#) (1)
  - [Phillips #1 Screwdriver](#) (1)
-

## Step 1 — Lamp



- Loosen the 2.5 mm Phillips #1 screw that holds the top assembly in place using a Philips #1 (PH1) screwdriver. This will enable you to lift and slide off the top cover.
- Fully remove the top cover in order to get to the lamp housing.

## Step 2



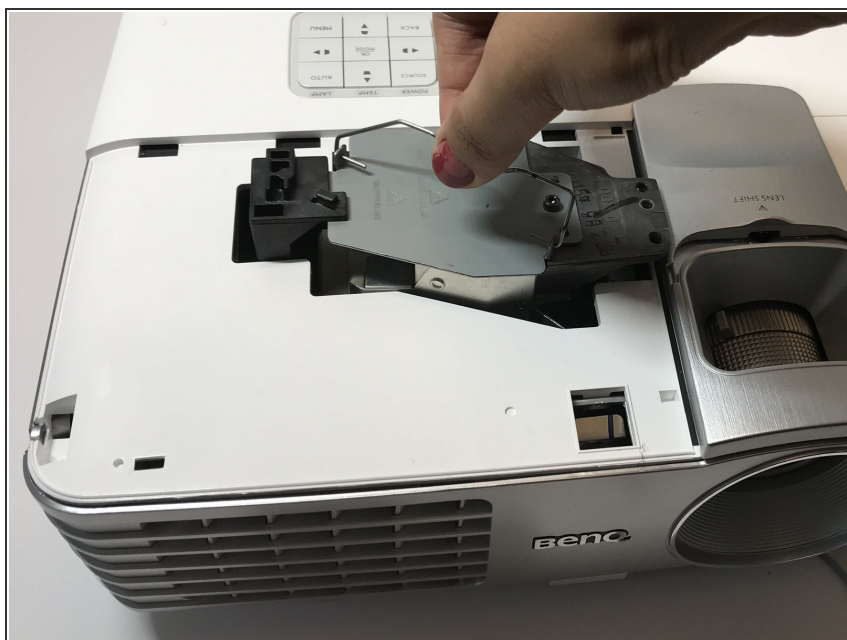
- Carefully peel off the adhesive film covering the lamp housing.

## Step 3



- Using a Phillips #1 (PH1) screwdriver, loosen and remove the single 2.5 mm Phillips #1 screw that secures the lamp housing to the projector.

## Step 4



- Remove the lamp from the projector by pulling on the lamp handle.
- Apply more force on the side opposite of the newly removed screw as you pull the lamp out.

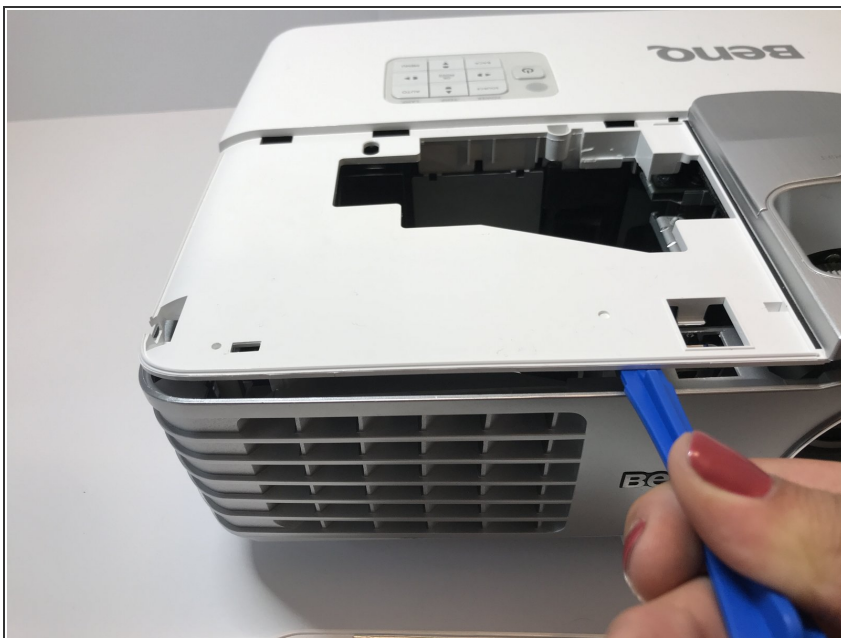


## Step 5 — Fan



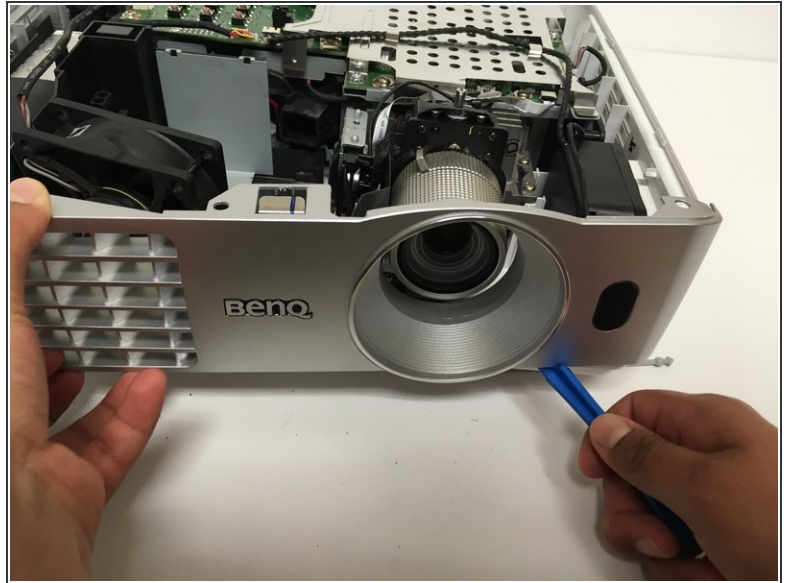
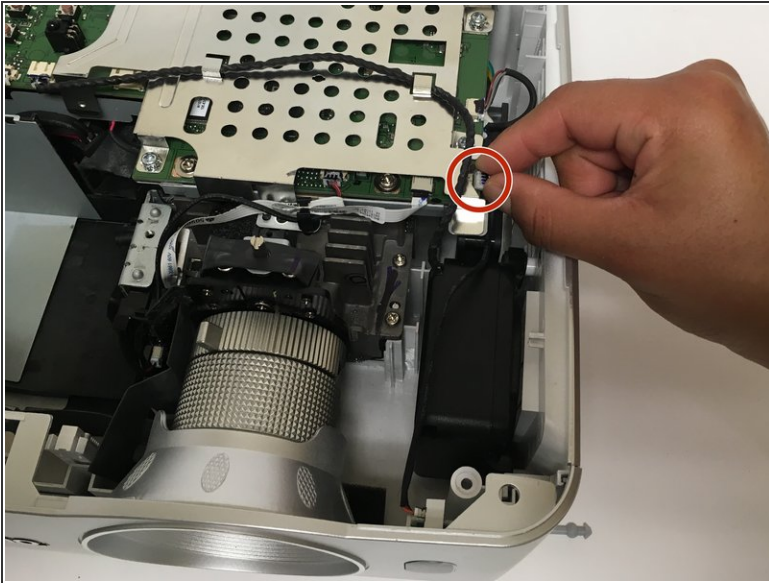
- Turn the projector over (upside down) and remove the five 9.5 mm Philips #1 (PH1) screws that hold the projector together to its bottom cover.

## Step 6



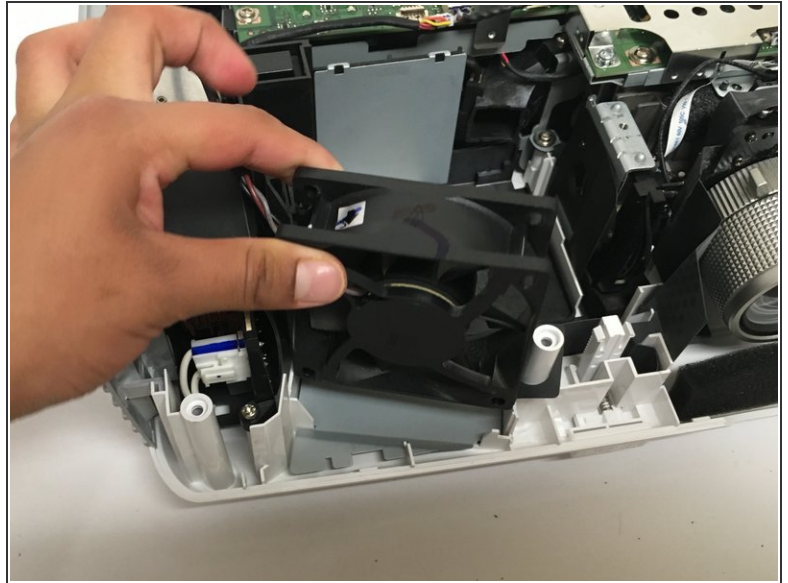
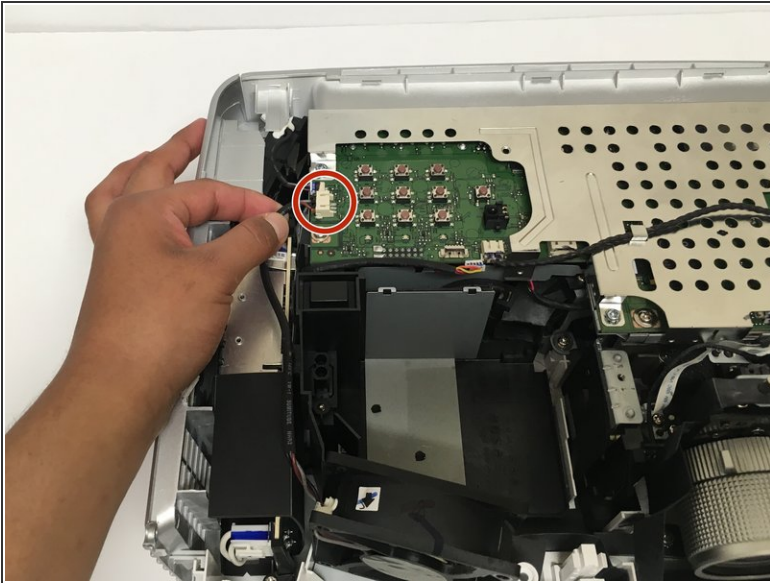
- Carefully, flip the projector back over to its upright position.
- Using an opening tool, loosen then remove the top cover of the projector.

## Step 7



- Unplug the wire that connects the front cover to the circuit board.
- Now use the opening tool to pry the front cover from the platform .
- Gently pull the cover from the rest of the frame.

## Step 8



- Disconnect the wire that connects the main fan to the circuit board.
- Carefully remove the fan by pulling it directly upwards from the base.

To reassemble your device, follow these instructions in reverse order.