



Besta Super 5000 Keyboard Replacement

Replacing the keyboard of the Besta Super 5000.

Written By: Sarah





TOOLS:

- [Phillips #0 Screwdriver](#) (1)
- [iFixit Opening Tools](#) (1)



PARTS:

- [Replacement keyboard mat for Besta Super 5000](#) (1)

Step 1 — Battery



- Flip the device on its back.

Step 2



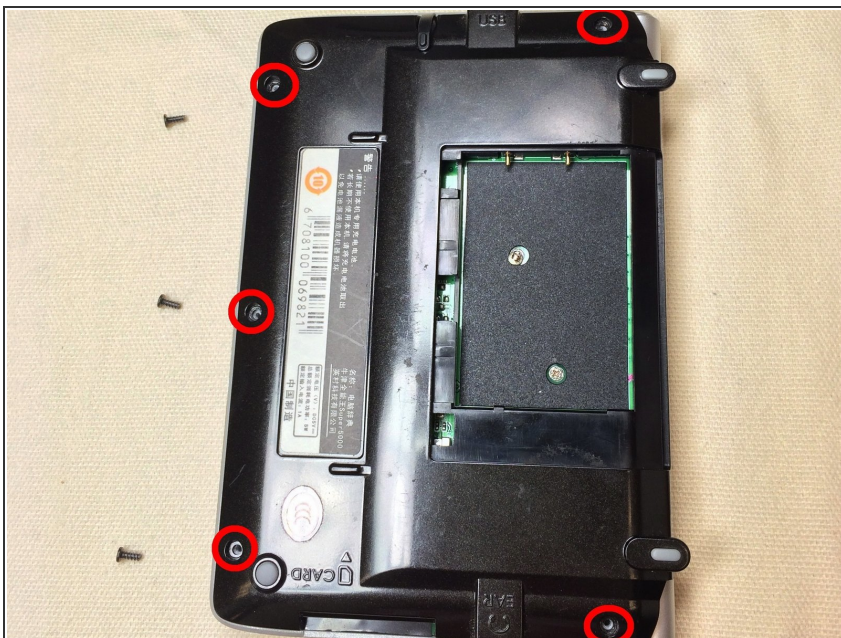
- Slide off the battery panel with your fingers.

Step 3



- Pull the plastic tab on the battery to remove it from the device.

Step 4 — Back Cover

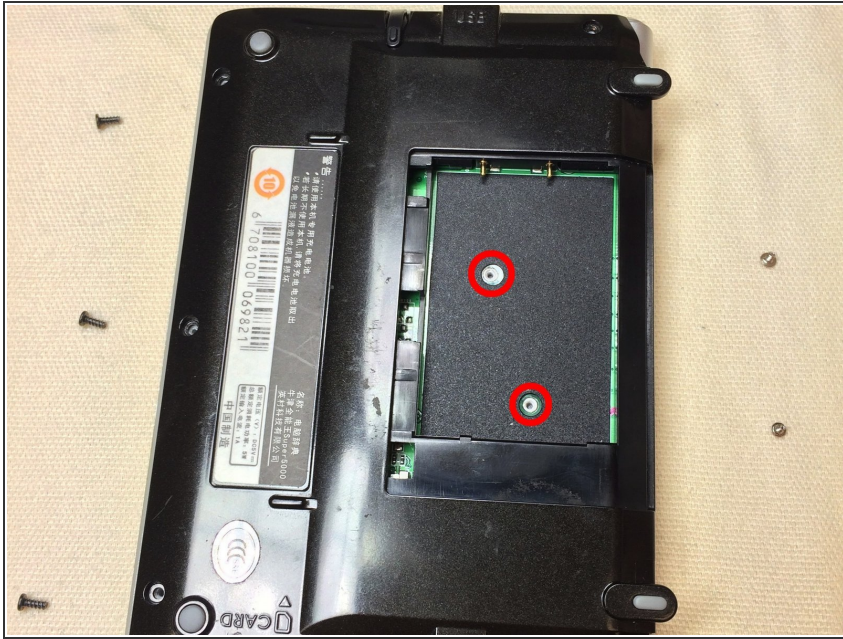


- Remove the five screws around edge of device using Phillips #0 screwdriver.

⚠ WARNING: Be careful not to lose the screws because they are needed for reassembly.

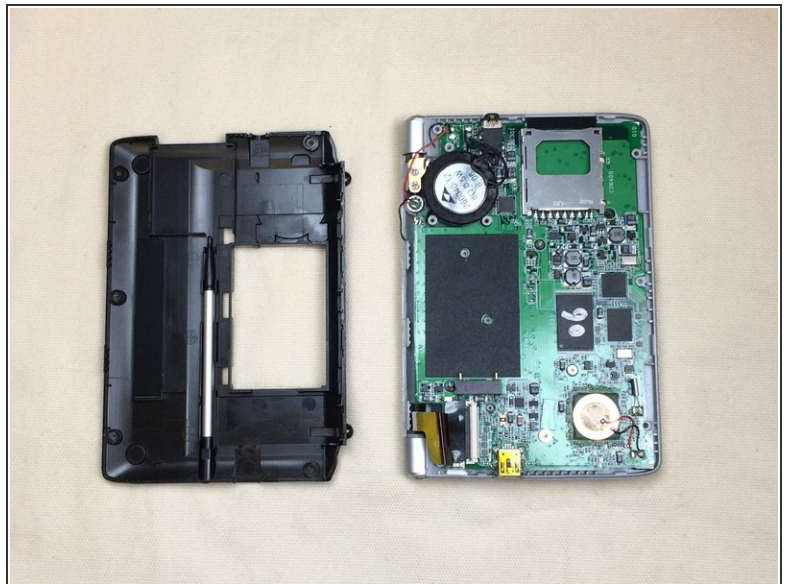
i TIP: Keep each group of screws together to help with reassembly since some vary in size.

Step 5



- Remove the two screws behind the battery using a Phillips #0 screwdriver.

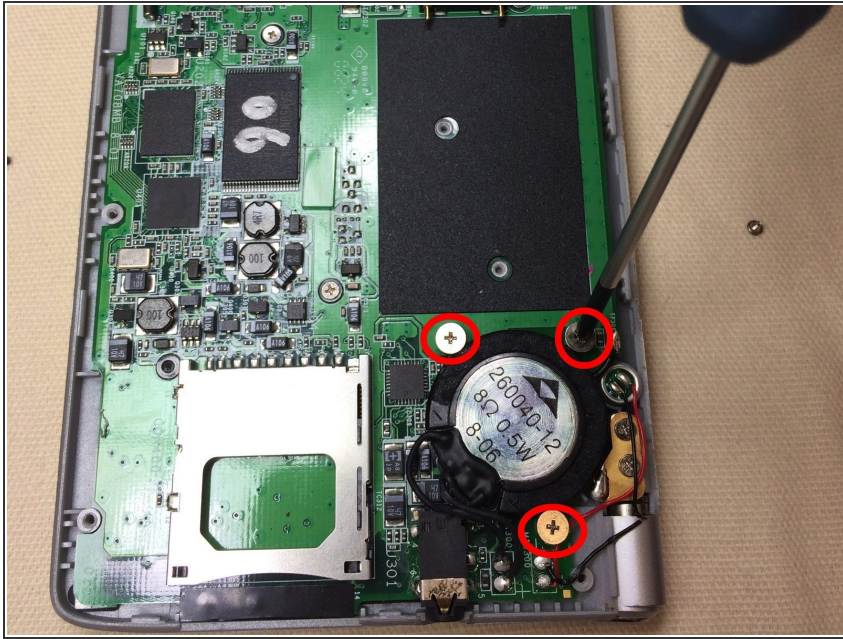
Step 6



⚠ WARNING: All screws must be removed before you begin this step. Do not forcefully pry apart the device with screws still in it because you may damage it.

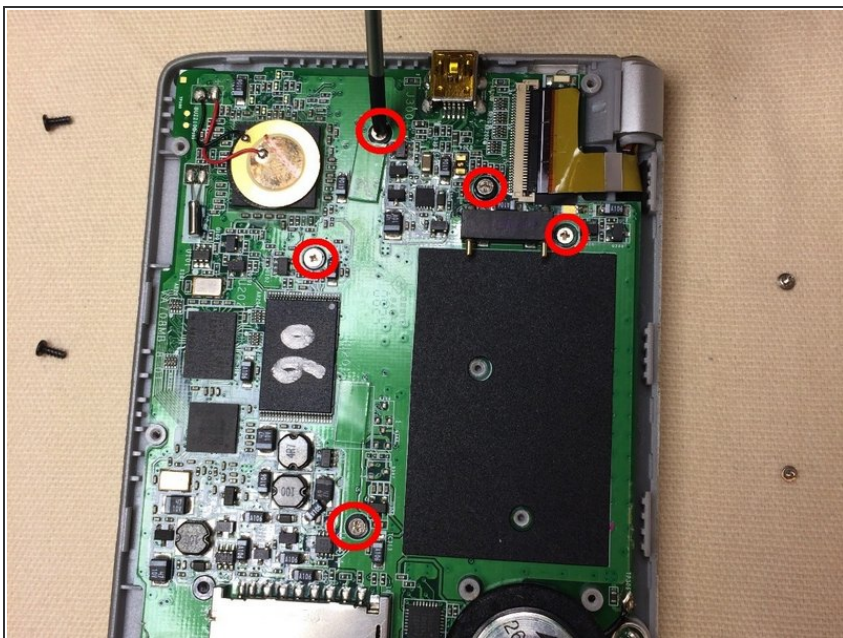
- Gently pry off the backing using flat blue iFixit opening tool.

Step 7 — Motherboard



- Remove three silver screws from black round battery using Phillips #0 screwdriver

Step 8



- Remove five small screws from around side of the motherboard using a Phillips #0 screwdriver
- NOTE: There are two different sizes of screws, but they can be removed with the same screwdriver head

Step 9

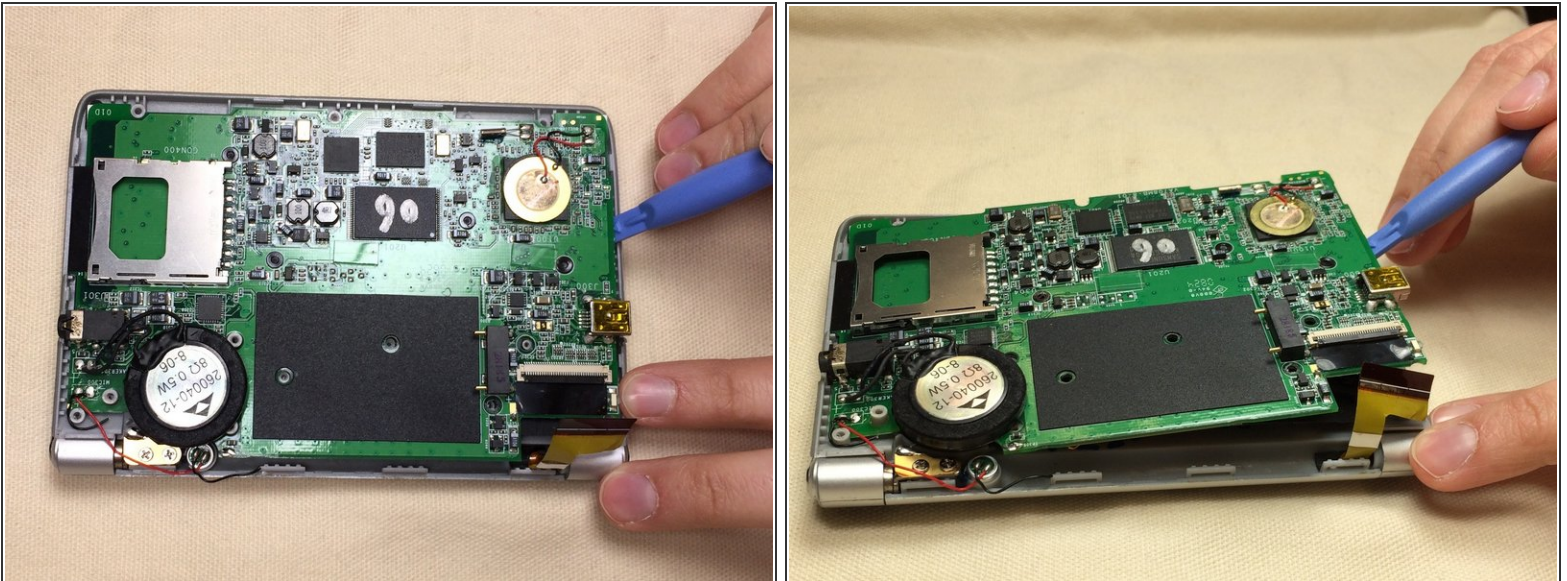


- Using the thin black iFixit Tweezers, pinch the center of the yellow ribbon located in the corner of the device

⚠ WARNING: Do not yank or remove the ribbon from the device

- Carefully pull the hidden piece of ribbon out from underneath the motherboard

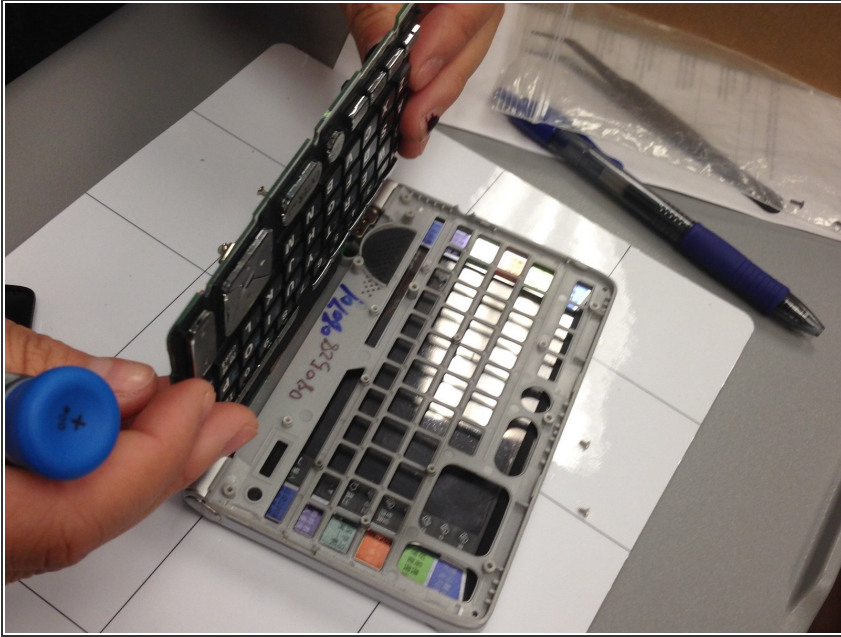
Step 10



⚠ WARNING: All screws must be removed before you begin this step. Do not forcefully pry apart the motherboard with screws still in it because you may damage it.

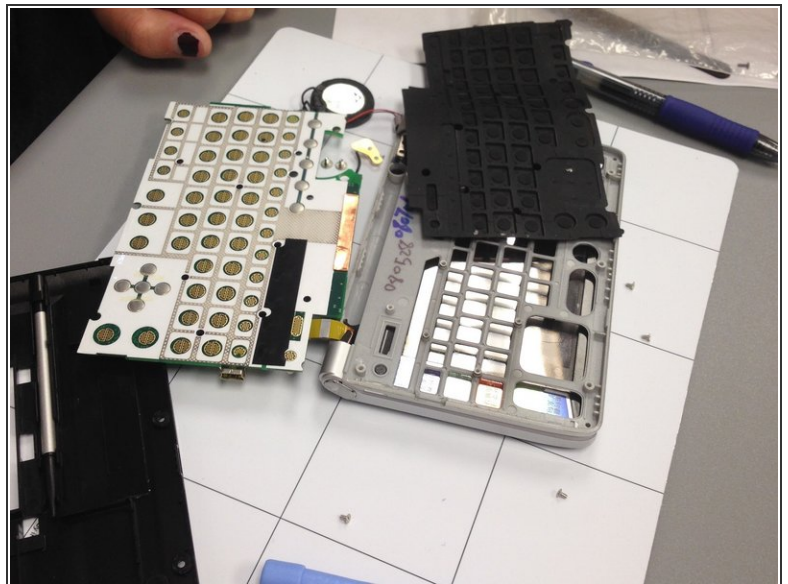
- Carefully pry off the motherboard with the blue iFixit Opening Tool.

Step 11



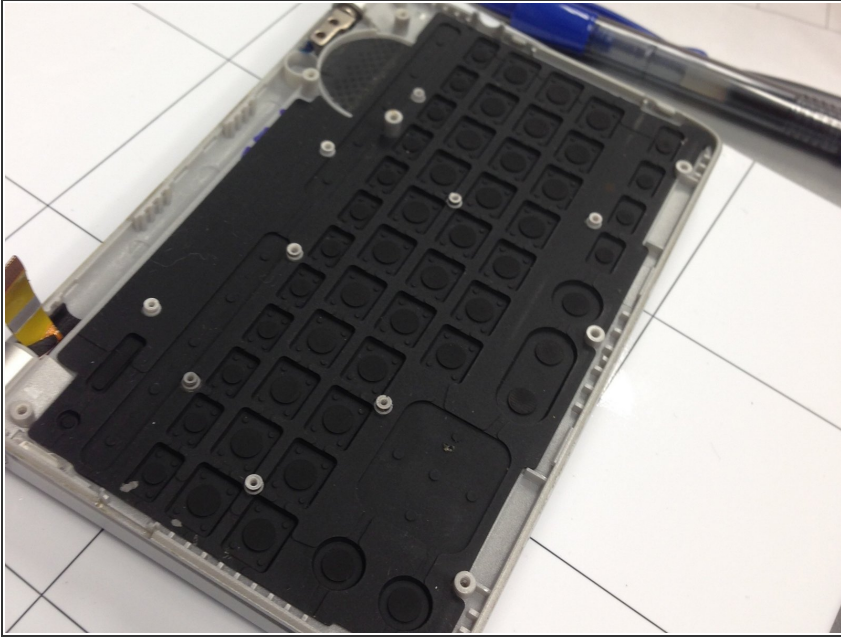
- Take the motherboard out of the body frame.

Step 12



- Lift off the black keyboard mat from the motherboard.
- Replace the motherboard.
- Reverse the steps to put the device back together.

Step 13 — Keyboard



- Replace old keyboard mat with new keyboard mat.
- Reverse steps to put device back together

To reassemble your device, follow these instructions in reverse order.