



Billy Goat Brush Cutter BC2600HHF 2015

Throttle Cable Replacement

Learn how to remove or replace the throttle cable.

Written By: Jeff Suovanen



INTRODUCTION

Follow these instructions to remove the throttle cable, either to replace it or to service the throttle control.



TOOLS:

- [Flush Wire Cutters](#) (1)
- [1/2" Wrench](#) (1)
- [7/16" Wrench](#) (1)
- [Phillips #2 Screwdriver](#) (1)



PARTS:

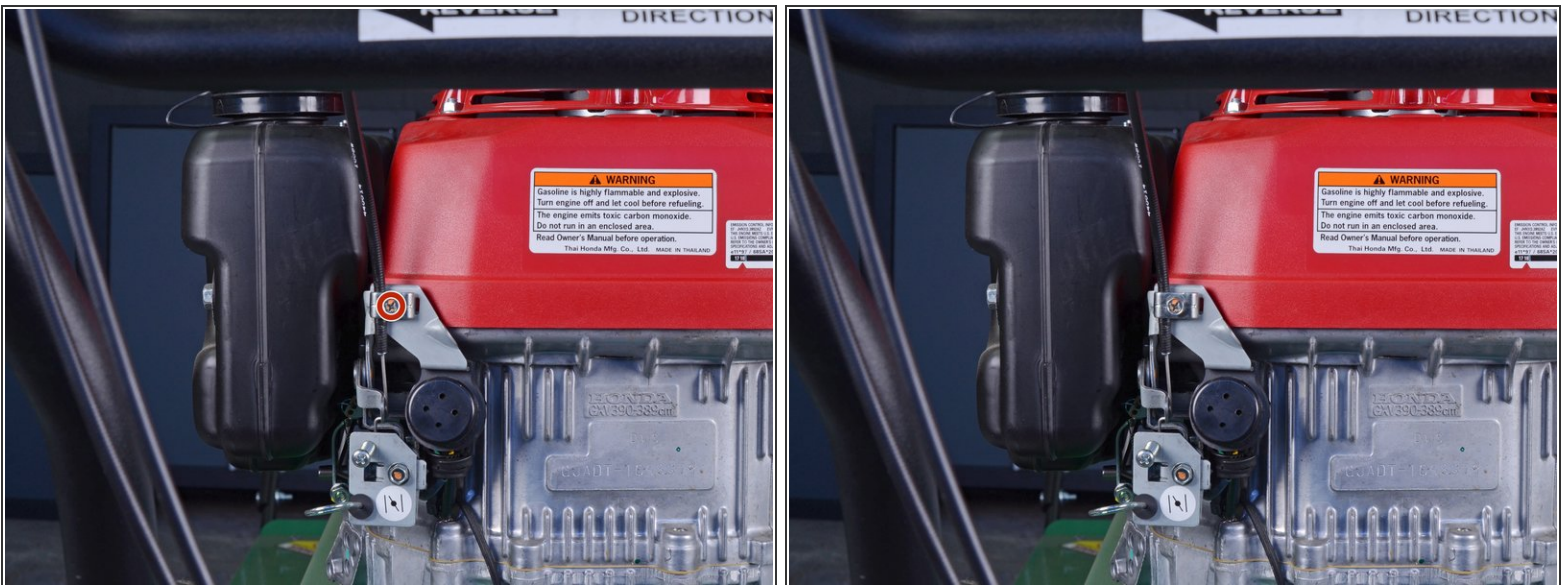
- [Billygoat Cable Throttle 440014](#) (1)
- [White Lithium Grease](#) (1)

Step 1 — Throttle Cable



- Cut and remove any zip ties securing the throttle cable.

Step 2



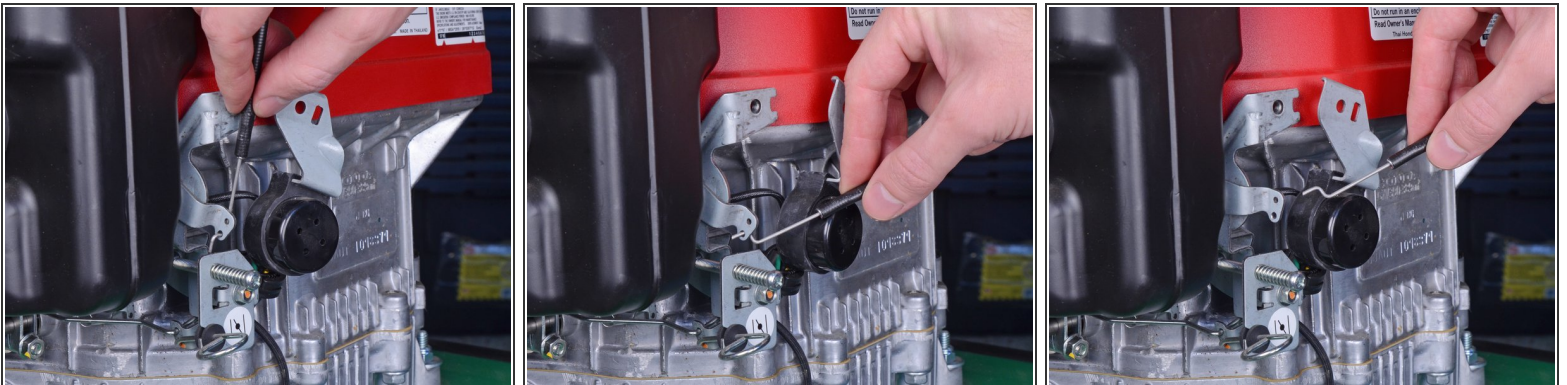
- Use a Phillips #2 driver to remove the screw securing the lower end of the throttle cable.

Step 3



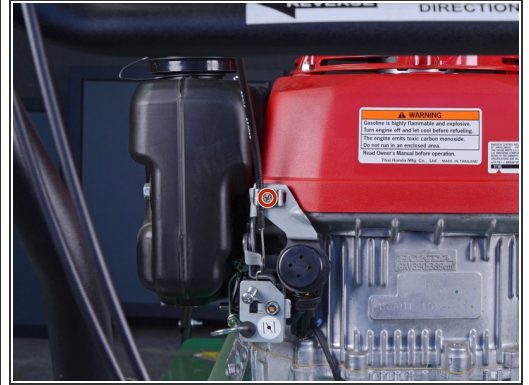
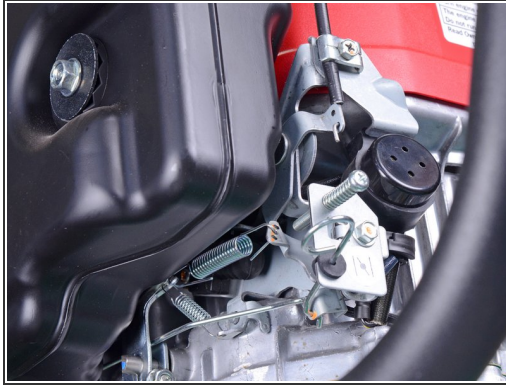
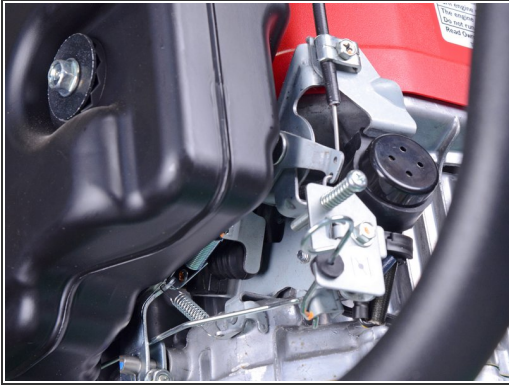
- Remove the bracket securing the lower end of the throttle cable.

Step 4



- Rotate the lower end of the throttle cable to detach it from the throttle.

Step 5



- ☑ When reinstalling the throttle control cable, check to make sure that the throttle control moves the throttle through its full range of motion.
 - If necessary, loosen the screw securing the lower end of the throttle cable and adjust the position of the cable. Re-tighten the screw and check to make sure that the throttle moves through its full range of motion.

Step 6



- Use a 7/16" wrench or deep socket to remove the cap from the throttle control.

Step 7



- Advance the throttle control to expose the gear rack containing the upper end of the throttle cable.

Step 8



- Separate the gear rack from the upper end of the throttle cable.
- Lift and remove the gear rack from the throttle control.
 - If the gear rack doesn't fully detach, advance the throttle control lever a little farther.
- ✦ [Lubricate the gear rack](#) with a bit of lithium grease during reassembly.

Step 9



- Use a 1/2" wrench to unscrew the upper end of the throttle cable from the throttle control.
- Slide the throttle cable down out of the bottom of the throttle control, and remove the cable.

To reassemble your device, follow these instructions in reverse order.