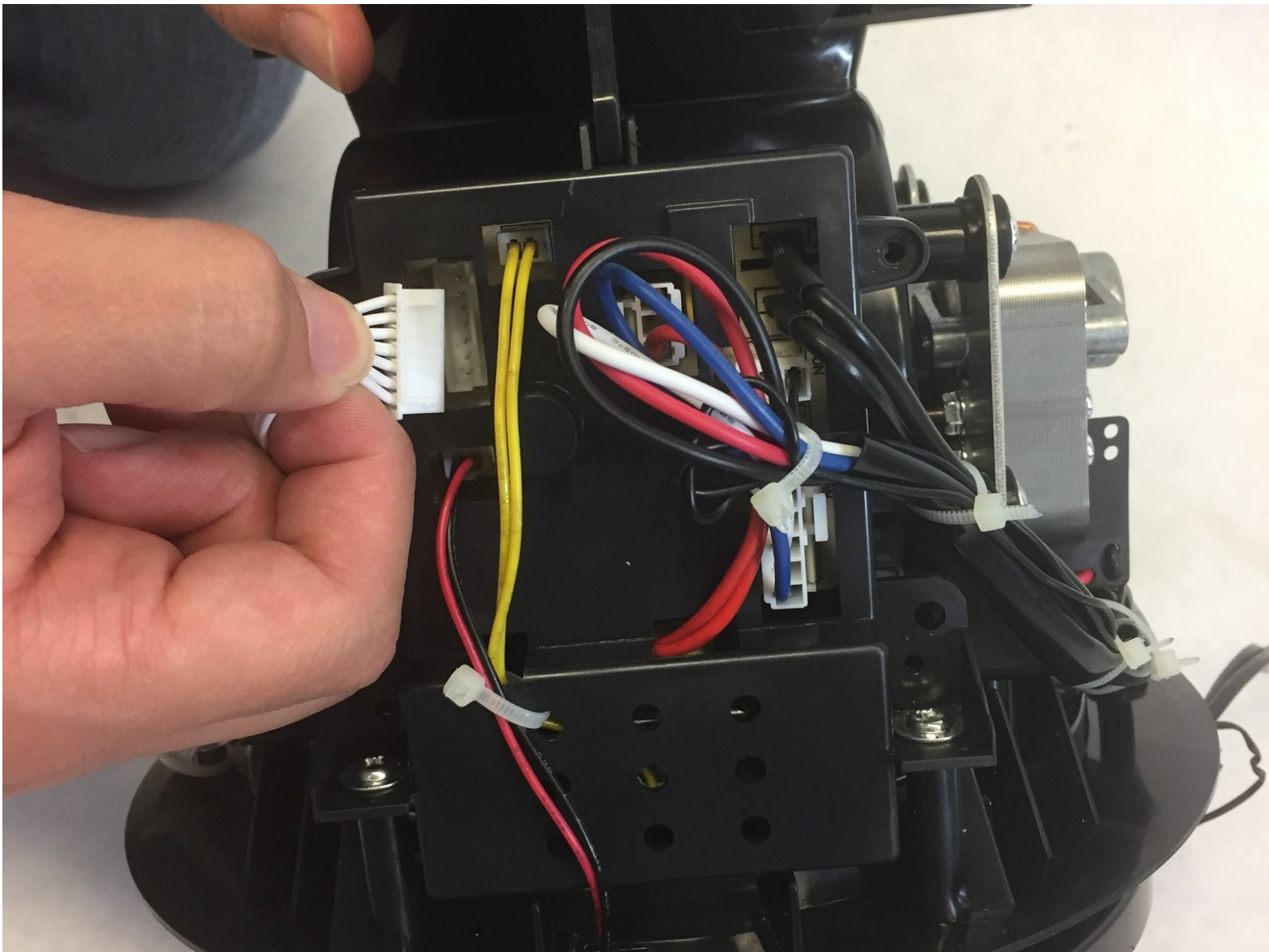




# Bionaire BAP 600 Control Board Replacement

Replace control board or its components such as capacitors or a fuse to bring power back to fan , ionizer , and LED's.

Written By: Alexander Tarancon



---

## INTRODUCTION

Make sure to unplug air filter from wall outlet. This step should be a last resort for find any issue dealing with the fan, ionizer or front LED's.



### TOOLS:

- [Mako Driver Kit - 64 Precision Bits](#) (1)
  - [Metal Spudger](#) (1)
  - [Utility Scissors](#) (1)
-

## Step 1 — Base/Intake



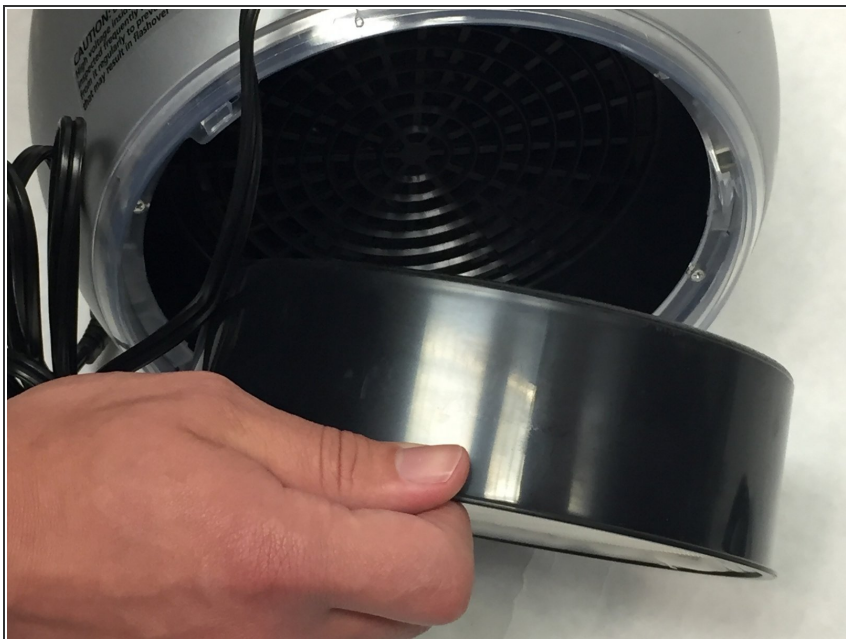
- Rotate base counterclockwise, supporting top with opposite hand.

## Step 2



- Pull base away from housing exposing air filter.

## Step 3 — Air Filter



- Grab the edge of the filter housing and pull the filter away from the rest of the device.

## Step 4



- Gently pull apart each fold of the filter to check for abrasions or other anomalies. Clean with a dust rag if necessary.



## Step 5 — Outer Shell



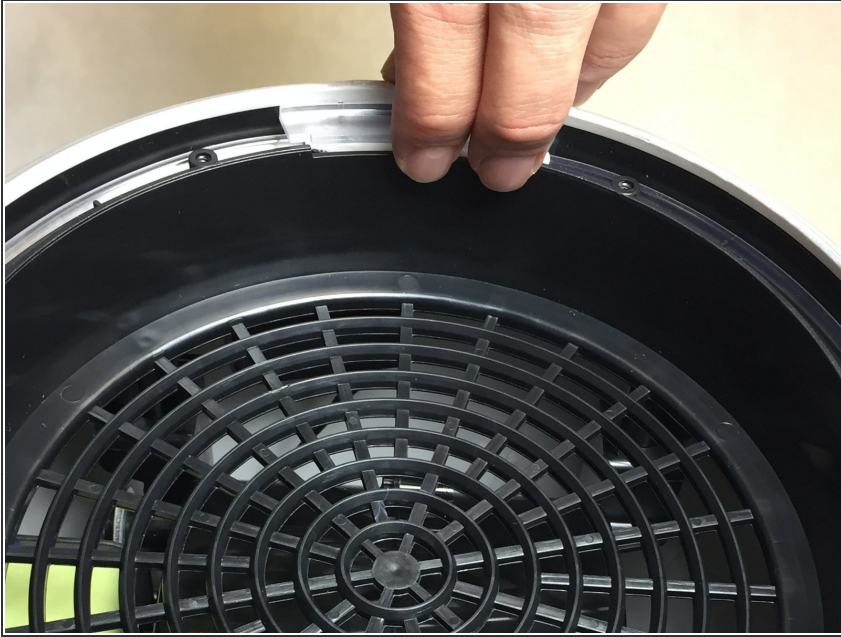
- Remove all 6 screws from the LED housing.

## Step 6



- After the 6 screws are removed, remove the LED housing from the bottom of the device by lifting it off.

## Step 7



- Using two fingers lift the translucent LED cover from the inside. Repeat this step for the second tab.

## Step 8



- After lifting 45 degrees, pull the translucent tab away from the housing. Repeat this step for the second LED cover.

## Step 9



- Locate the tab about 1 inch below the top vent. Insert a flat tool laterally past the tab and press in toward the center of the device. As the tab is being held down, pull the two halves of the egg apart to keep the shell open.

## Step 10



- Locate the second tab on the back of the device approximately 2 inches above the power cord.
- Insert the flat tool at a slight angle toward the left of the power cord. Depress the tab and pull the two halves of the shell apart.



## Step 11



- Locate the bottom tab on the front side at the same height as the bottom tab on the back side.
- Depress the tab using a flat tool at a slight angle and pull the halves apart.

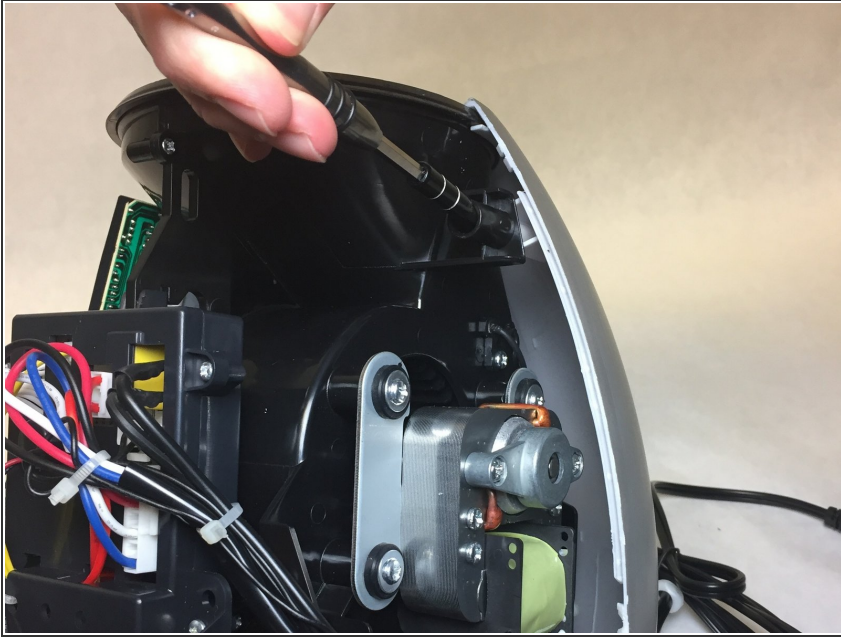
## Step 12



- Locate the last tab about one inch below the top on the front side.
- Depress the tab using the flat tool at a slight angle and finish pulling the removable half of the shell off.

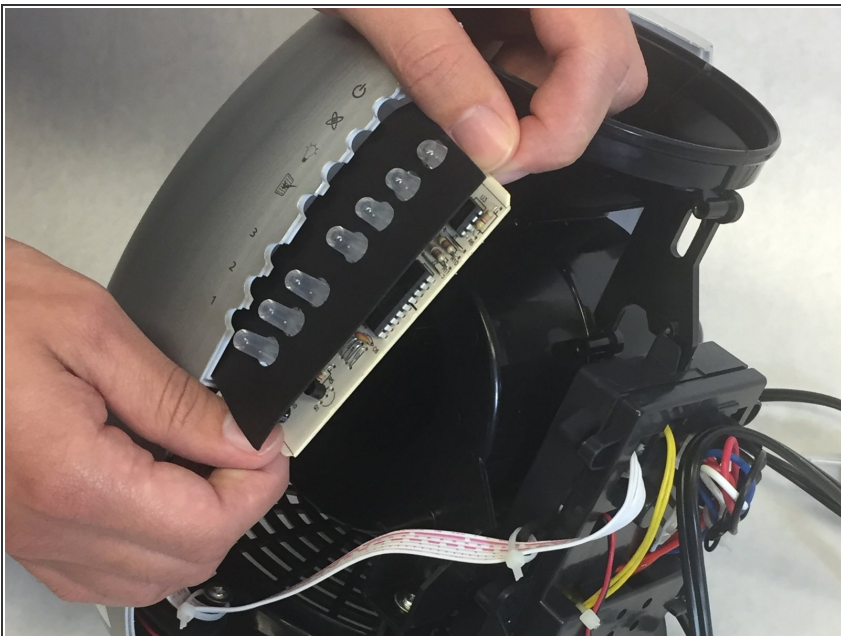


## Step 13



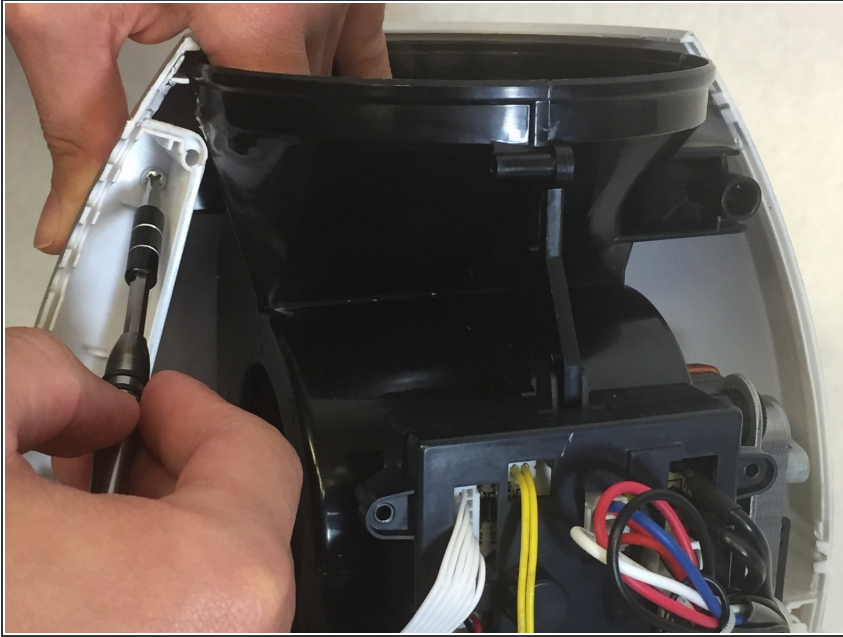
- Locate the screw housing opposite of the control board, and remove the screw.

## Step 14



- Locate the control board and grab it by the top and bottom firmly. Pull the board straight out being careful not to flex the circuit while removing.

## Step 15



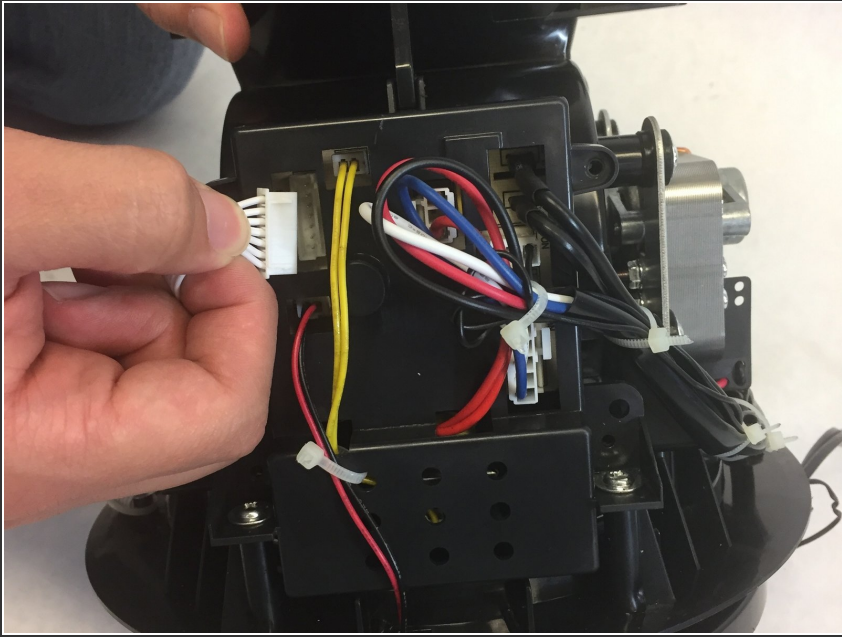
- Locate the screw that was being hidden by the control board and remove it to release the second half of the shell.

## Step 16



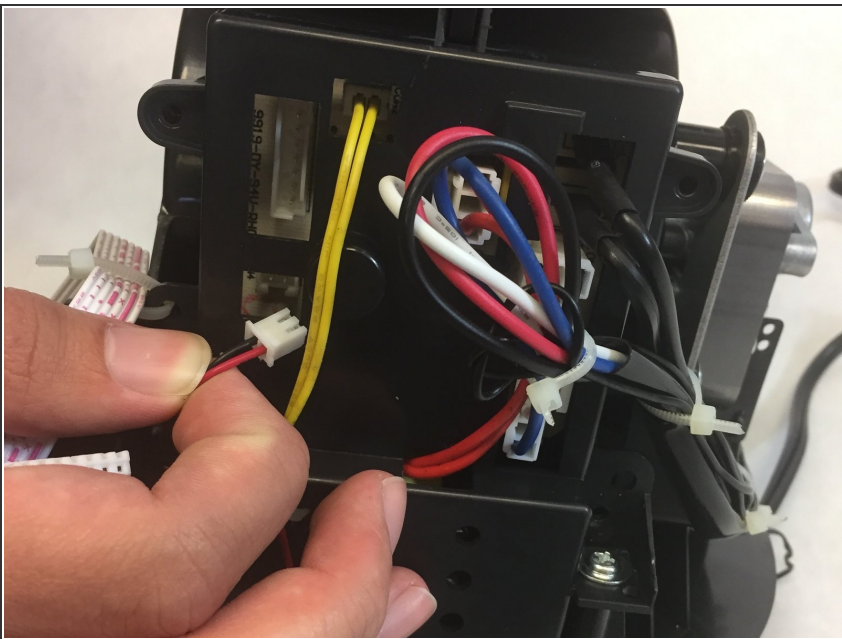
- Remove the released half of the shell to finish removing the entire outer shell of the device.

## Step 17 — Control Board



- Unplug 7 pin connector

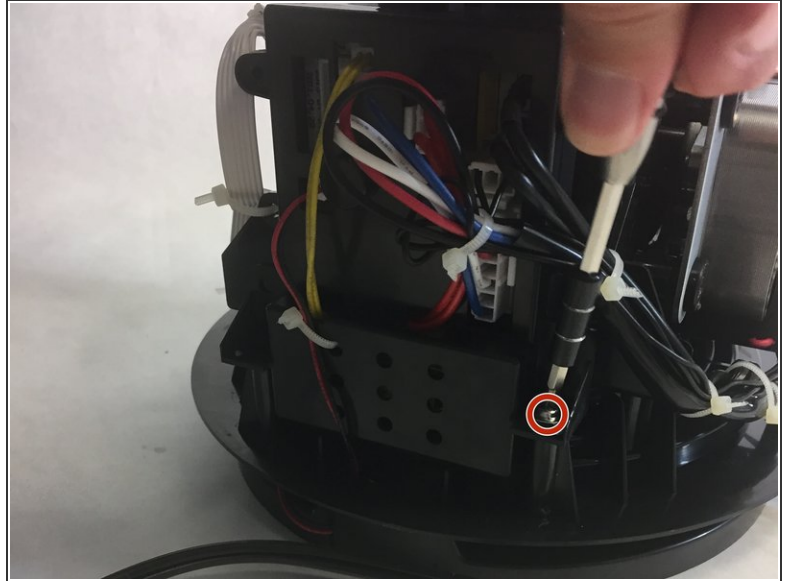
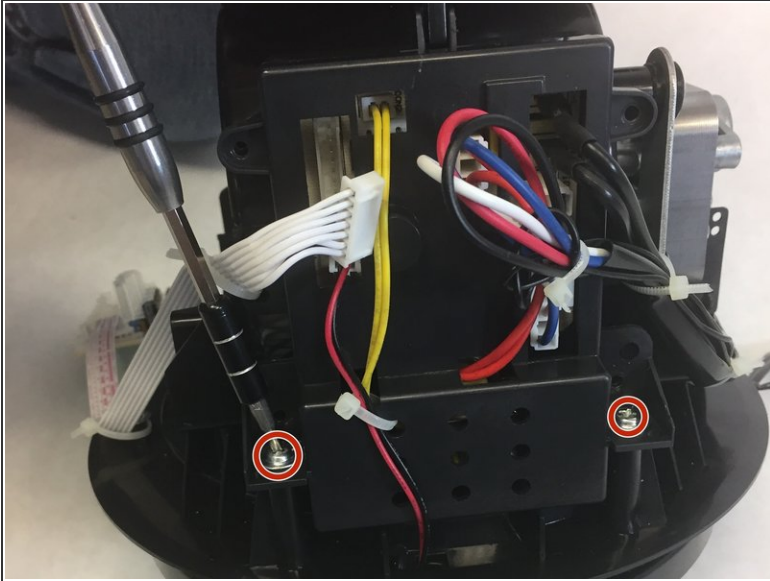
## Step 18



- Unplug 2 pin wires which connects the front LED's.

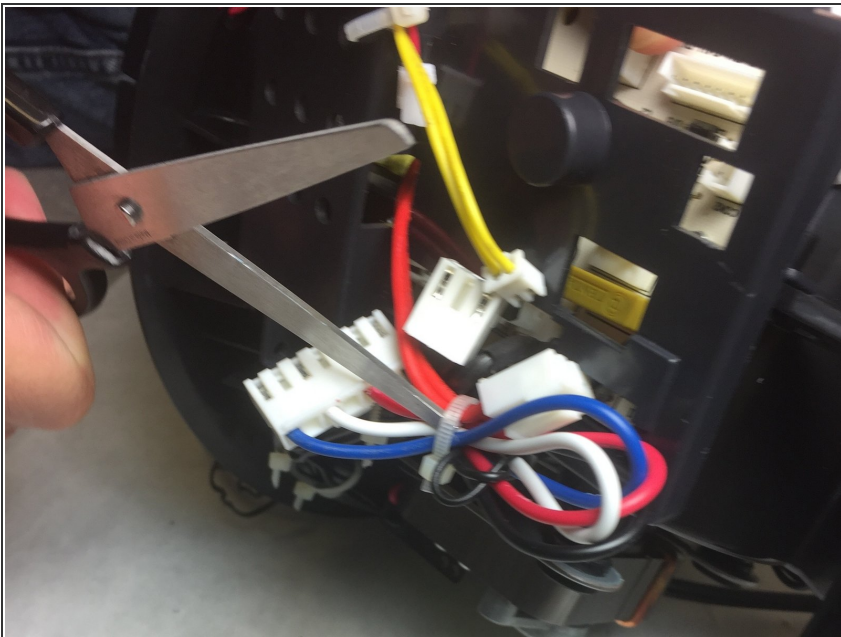


## Step 19



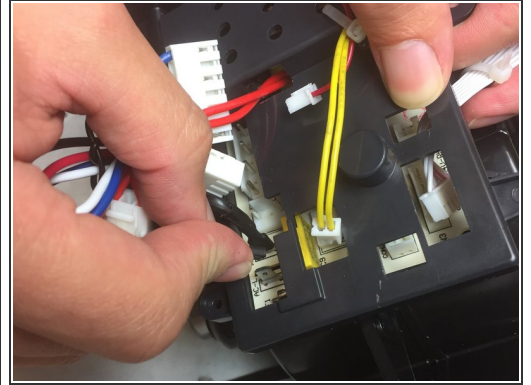
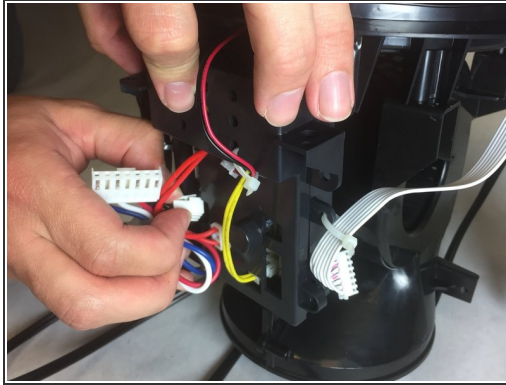
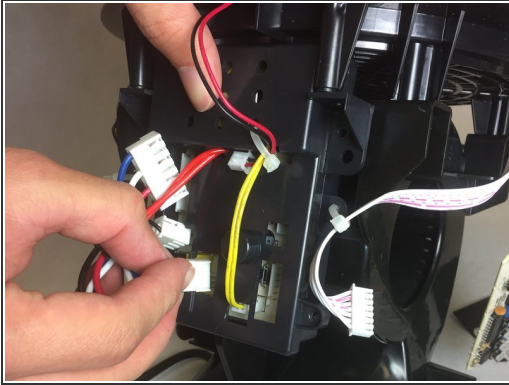
- Remove two screws

## Step 20



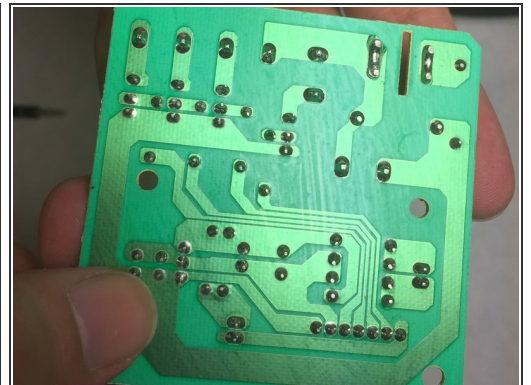
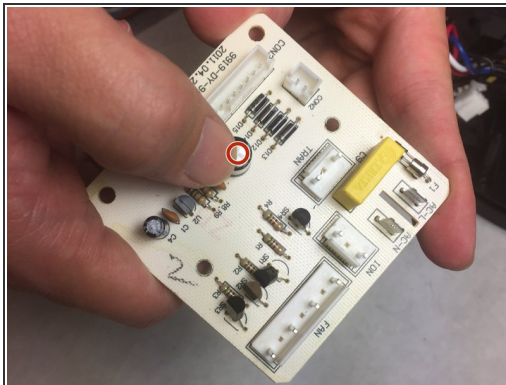
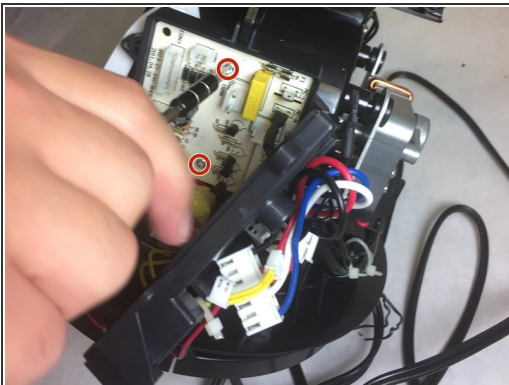
- Unplug pins
- Use scissors to cut zip ties

## Step 21



- Unplug rest of pin connections
- Remove Neutral and Hot wires
- They are the two black wires
- Pull them out

## Step 22



- Unscrew two screws
- Inspect capacitor for any bulges ( if it has a bulge , it means it is need to be replaced)
- Check for burnt solder in the back of circuit board

To reassemble your device, follow these instructions in reverse order.