



# Bonaire Mini Tower Fan Blade Replacement

How to replace the blades of a Bonaire Mini Tower Fan if it is not blowing or appears to be spinning the wrong way.

Written By: Kyle Taggard



## INTRODUCTION

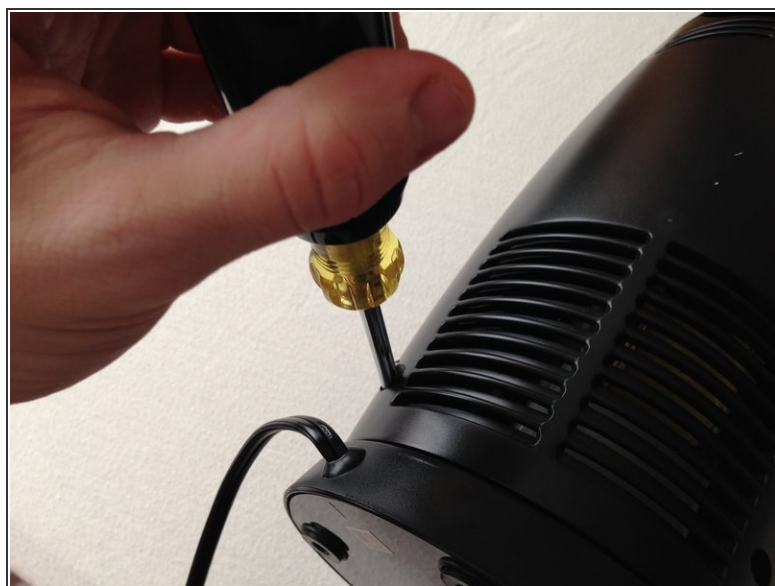
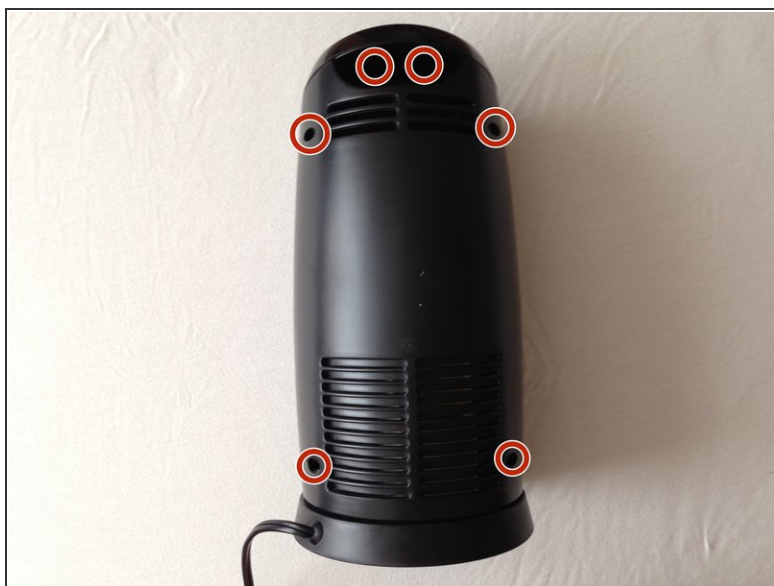
Do you have a Bionaire mini tower fan that appears to not be working? It may be due in part to the fan blades spinning the wrong way, which is a very simple fix. If you need to instead replace the fan blades as a whole, just follow the steps that are listed here.



### TOOLS:

- [Phillips #1 Screwdriver](#) (1)
  - [Slip Joint Pliers](#) (1)
-

## Step 1 — Blades



- There are 6 screws holding the entire fan together, which need to be removed to access the internals of the fan.

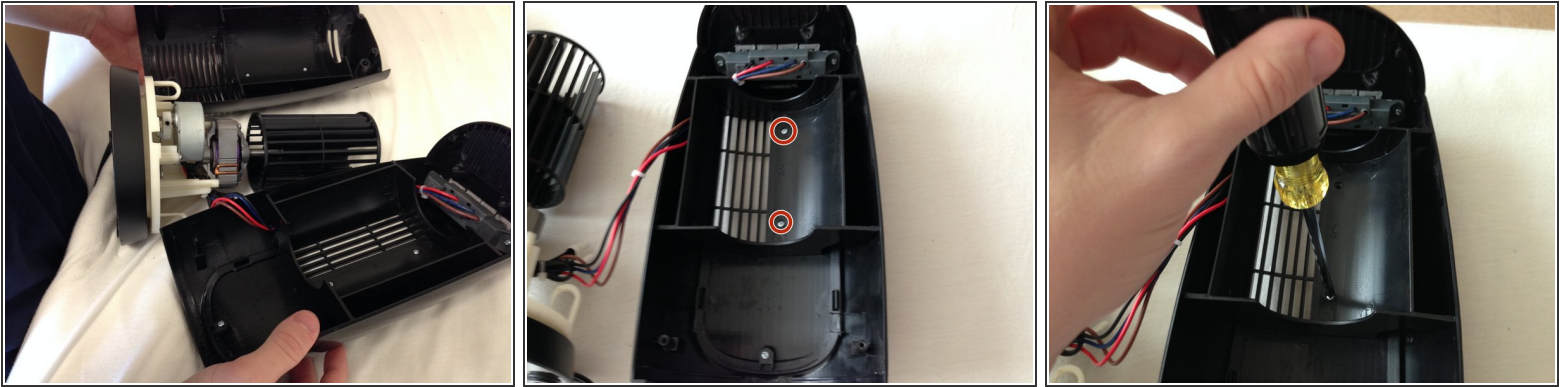
## Step 2



- Once the screws are all off, the fan can be pulled apart with a little bit of force. However, not too much force is required.

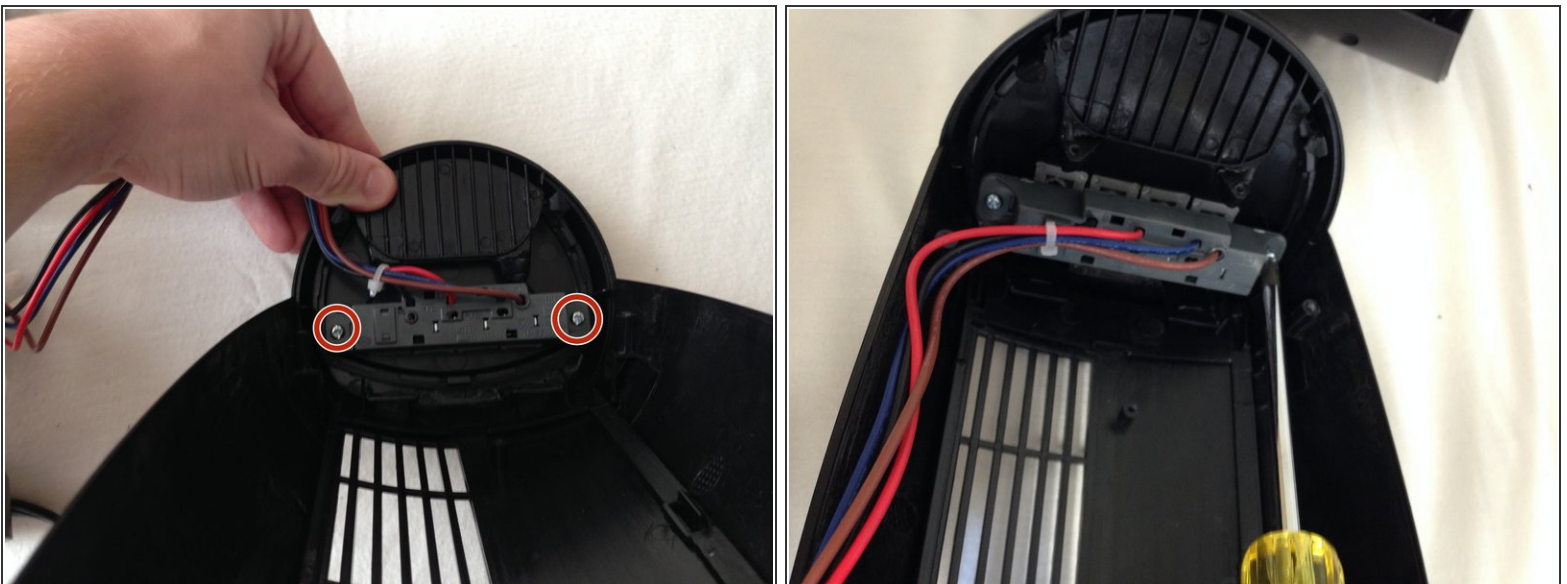


### Step 3



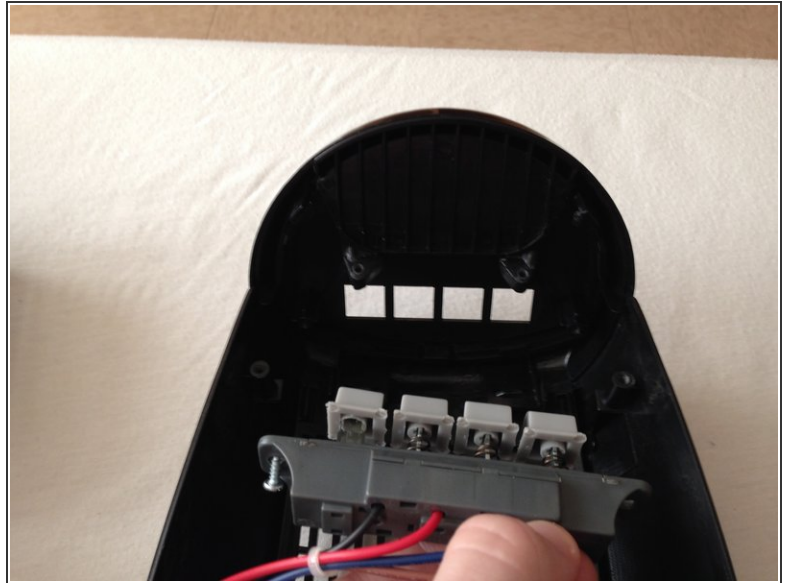
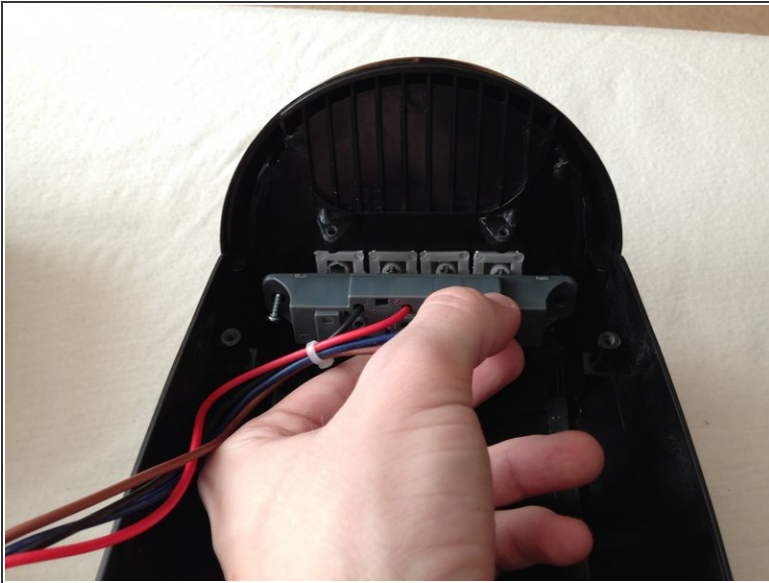
- Once you have the fan apart, in order to get more maneuverability, the wire attached to the motor needs to be loosened. This can be done by removing the two screws highlighted in red.

### Step 4



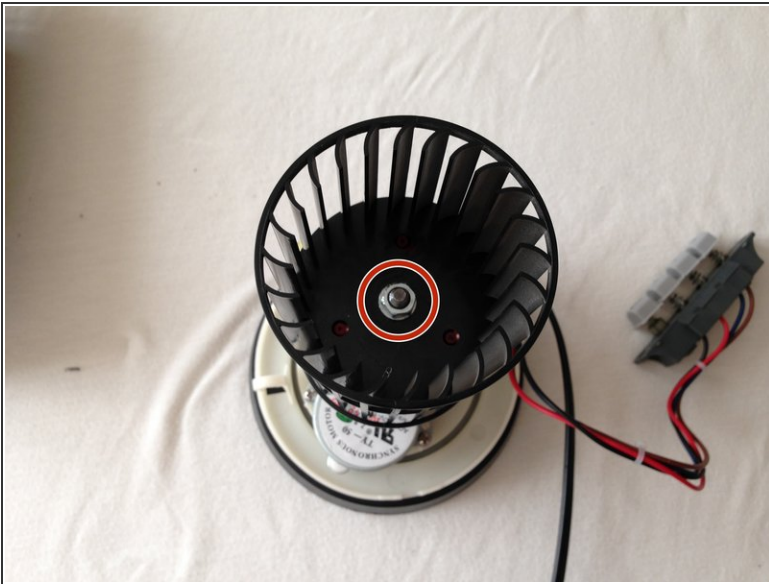
- To get more maneuverability, remove the button panel. This can be done by removing the 2 screws on either side of the panel in order to fully remove it.

## Step 5



- Carefully remove the panel by pulling on it. It should fall out easily and separate completely from its housing.

## Step 6



- The bolt that you need to remove is inside of the pre-installed fan blades. With your pliers, grab a hold of the nut and twist to the RIGHT. This will allow you to remove the fan blades.



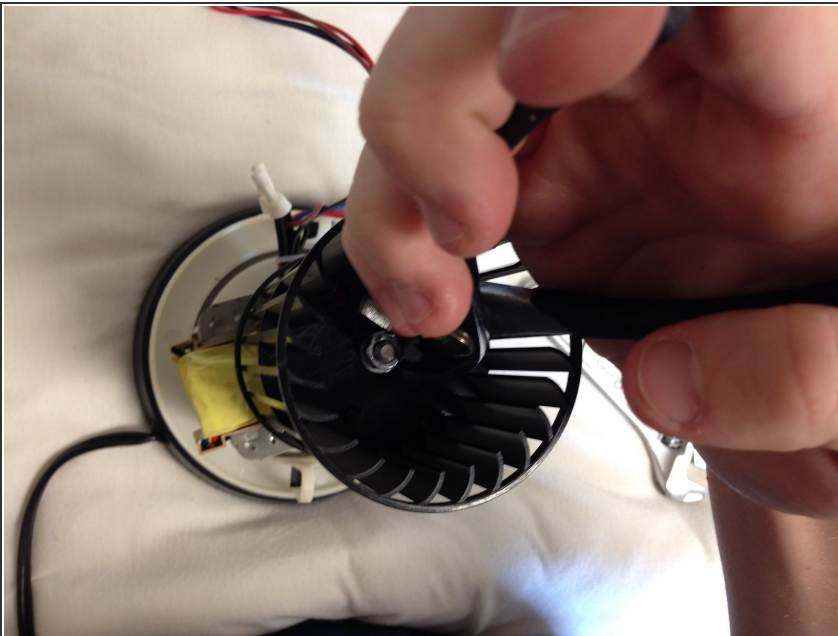
## Step 7



- In order to install the new blades, there are two pieces that you have to match up. The blades and pole both have a flat side that you have to match up in order for the blades to stay on.

⚠ Make sure when you install the blades, it blows air when it rotates in a counterclockwise fashion.

## Step 8



- Tighten the bolt to the left and you have successfully installed your new fan blades.

To reassemble your device, follow these instructions in reverse order.