



Bissell OptiClean Cyclonic Vacuum Cord w/ Reel Replacement

Guide to replace power cord and reel when cord won't retract.

Written By: Rianne Paracuelles



INTRODUCTION

When you press the retract button on the front of the vacuum, does the power cord not move? If so, here is the guide to replace the entire cord and reel.



TOOLS:

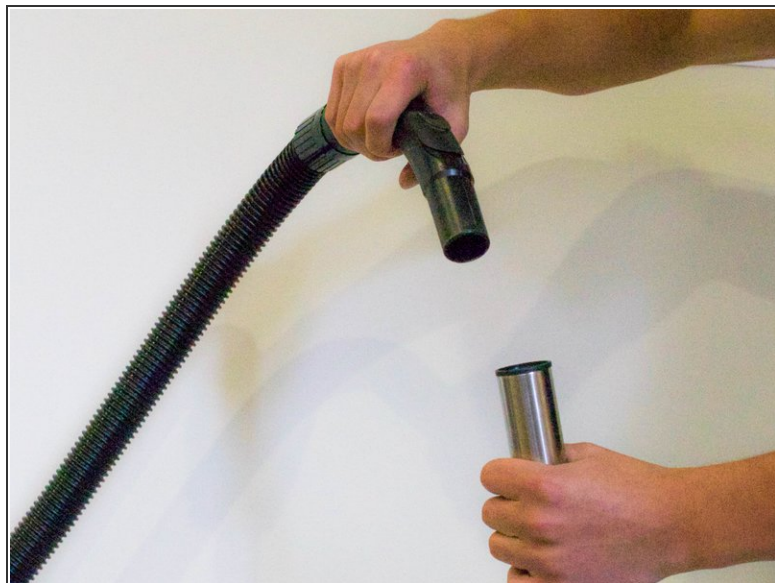
- [Large Needle Nose Pliers](#) (1)
- [Phillips #0 Screwdriver](#) (1)



PARTS:

- [Pre-Motor Filter](#) (2)
- [Post-Motor HEPA Media Filter](#) (2)
- [Dirt Cup HEPA Media Filter](#) (2)

Step 1 — Flex Hose with Handle



- **Grab hold** of both the flex hose handle and the extension wand.
- **Pull straight out** to detach the handle from the extension wand.

Step 2



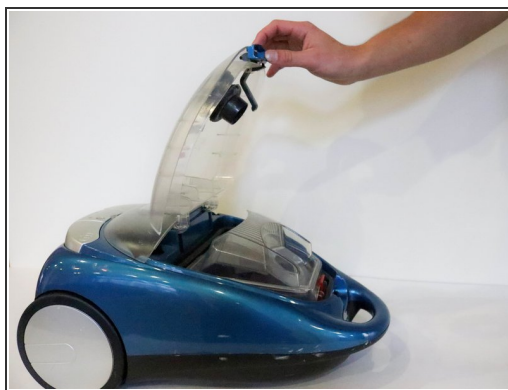
- **Locate the lock clip** on the other end of the flex hose.

Step 3



- **Hold down the lock clip** to unlock the flex hose from the vacuum.
- **Remove** the flex hose from the vacuum.

Step 4 — Filters



- After removing hose, place vacuum on back and unclip the top compartment.
- Open the compartment.
- Pull the dirt collection box out of the vacuum.

Step 5



- Place dirt collection box to the side.
- Locate the Pre-Motor Filter.
- Pull the filter out by grabbing the pull tab on top.

Step 6



- Turn vacuum around and locate the filter cover on the bottom.
- Place fingers in the opening and pull off the filter cover.
- Place fingers on each tab on the Post-Motor HEPA Media Filter and pull out.

Step 7



- Take filter out to clean or replace.
- To clean Dirt Collection Box, unlatch lid and take off.

Step 8



- Flip Dirt Collection Box over and locate the push tab.
- Push the Dirt Cup HEPA Media Filter up to take it off.
- Picture 3 Shows all the filters taken out of the vacuum.

Step 9 — Motor and Circuit Board



- Unscrew the two screws underneath the dirt collection box inside the vacuum.

Step 10



- Flip over vacuum.

Step 11



- Unscrew both screws on the bottom of the handle.

Step 12



- Unscrew both screws near the wheels.

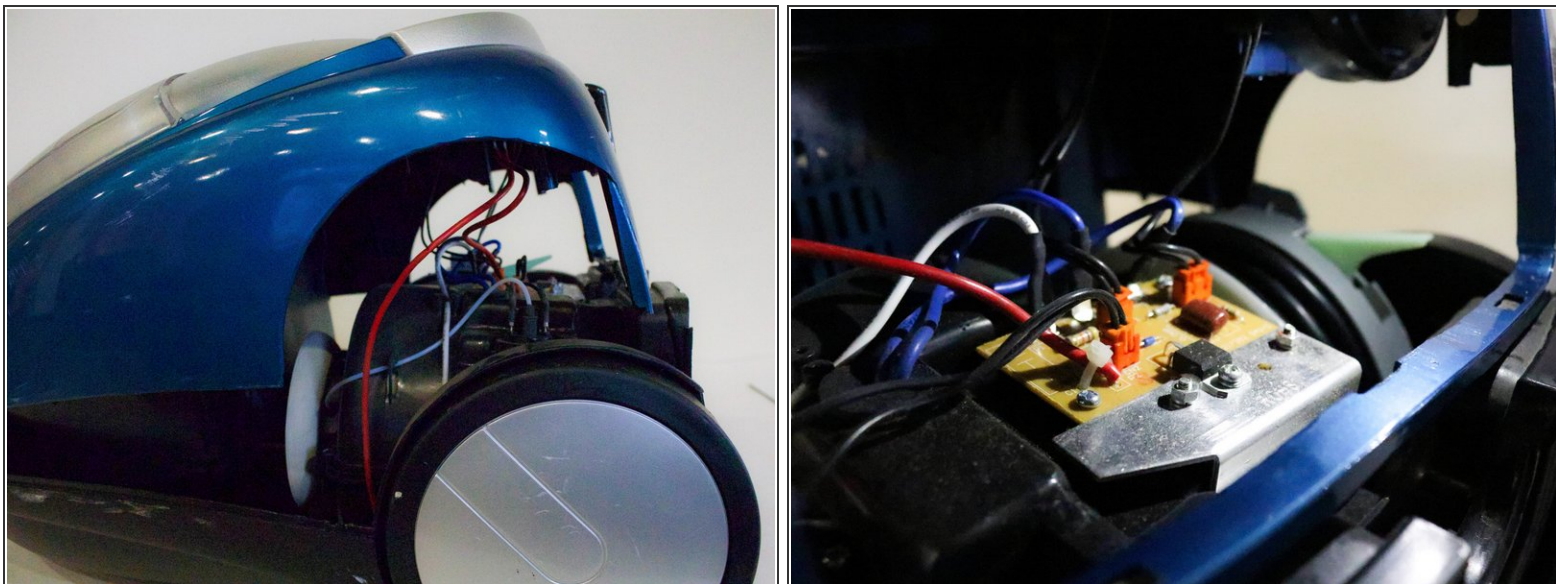
Step 13



- Flip over vacuum.
- Gently lift off top.

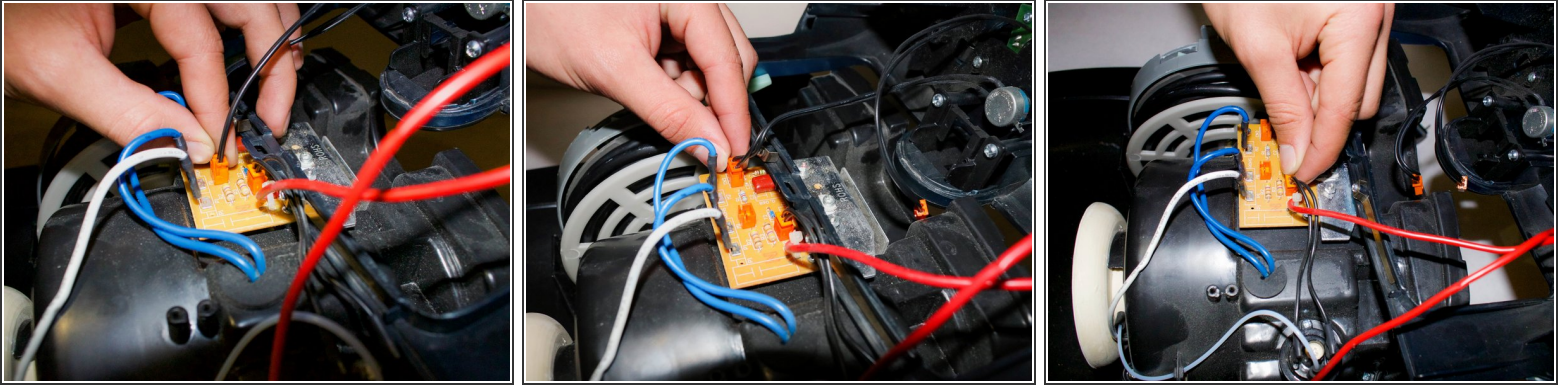
⚠ Do not try to take off completely. There are still wires attached to the hull.

Step 14



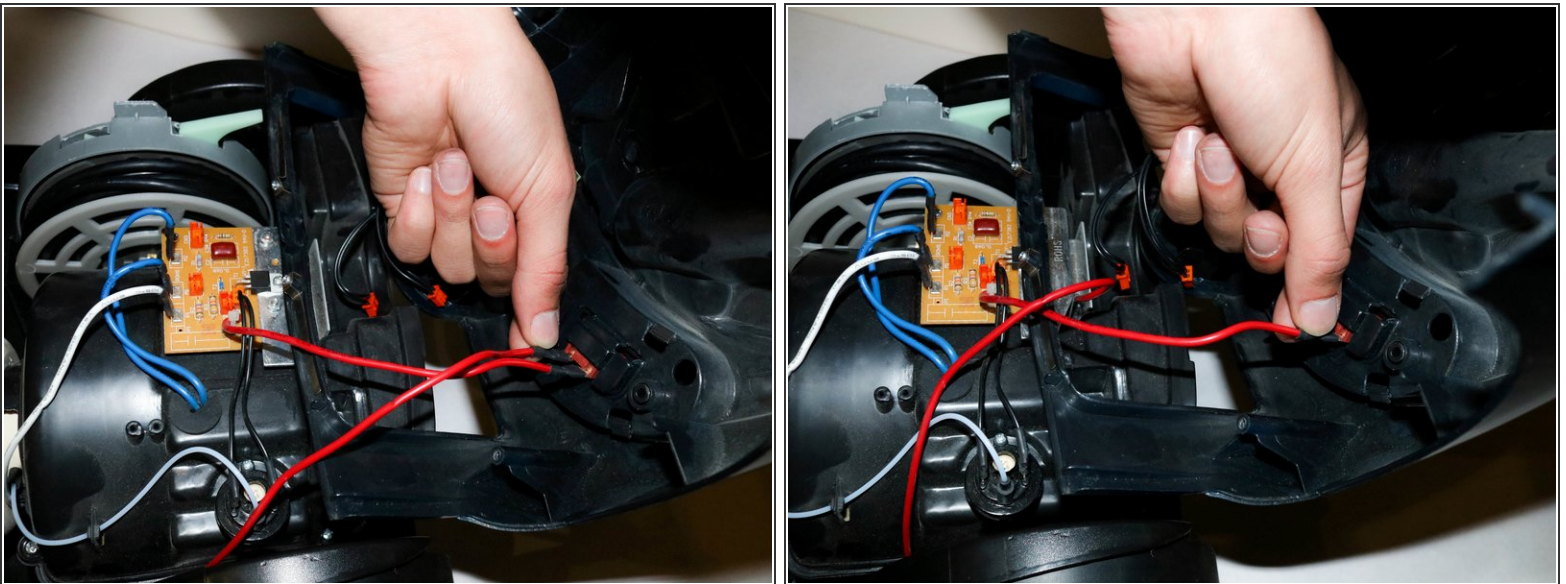
- Locate the circuit board.

Step 15



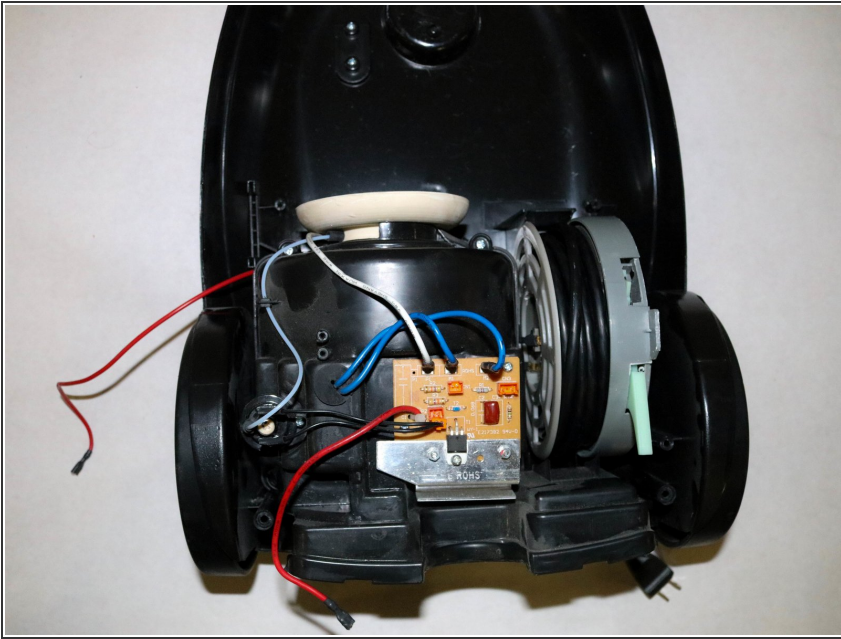
- Unplug each orange plug.
- ☑ Make sure you remember which orange plug goes where!

Step 16



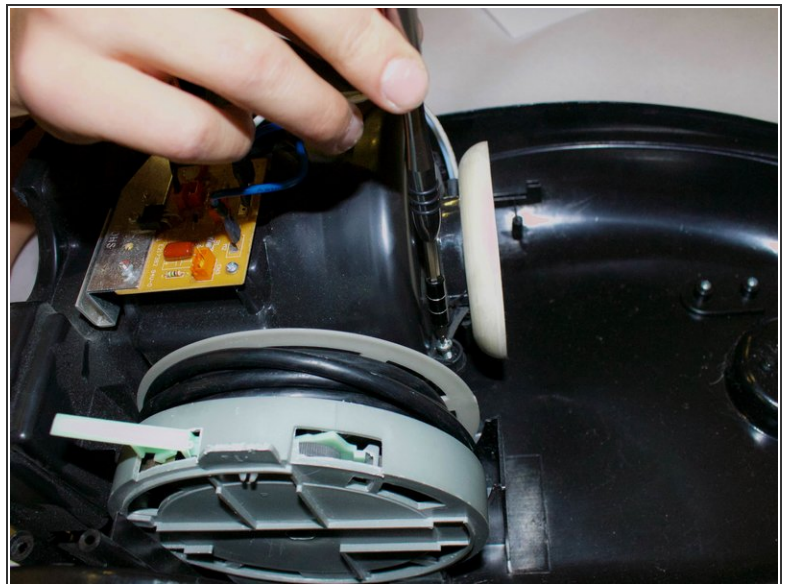
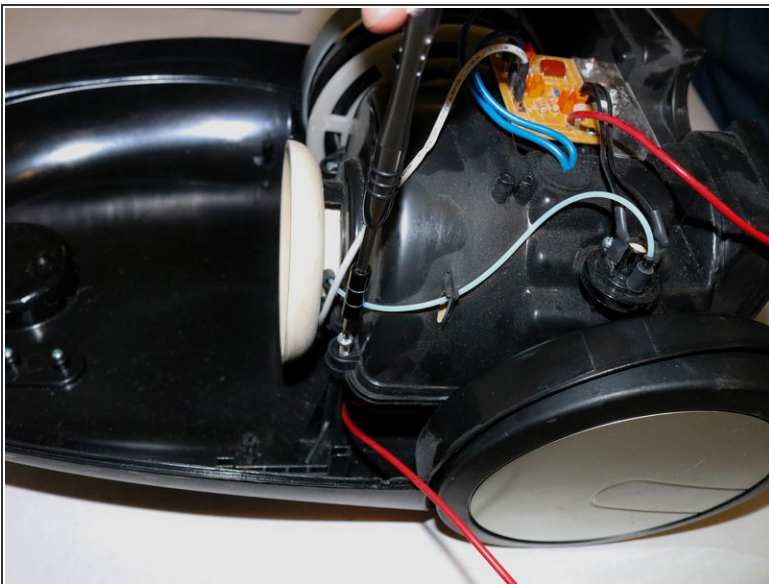
- Unplug the red wires. The wires may be a little difficult to take off. If they are, you may use a pair of pliers to pull the wires off.
- ⓘ Make sure not to wiggle the wires, as that may break the metal holding them.

Step 17



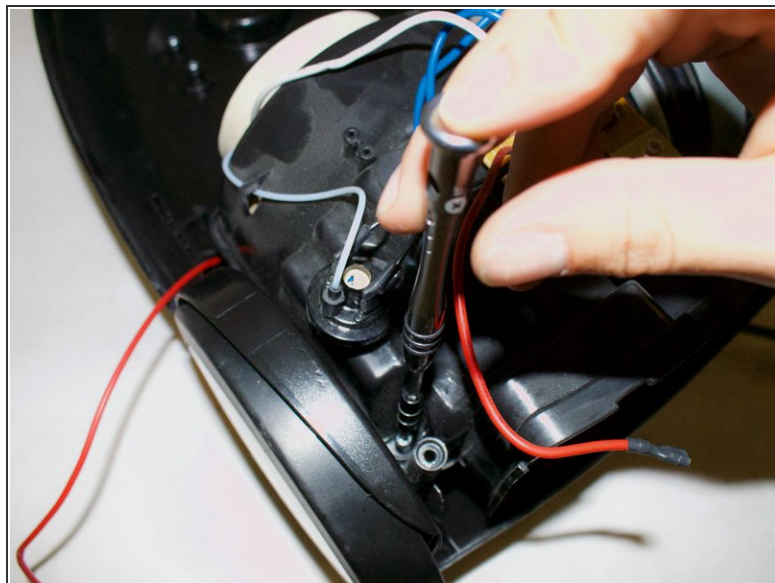
- Remove the top.

Step 18



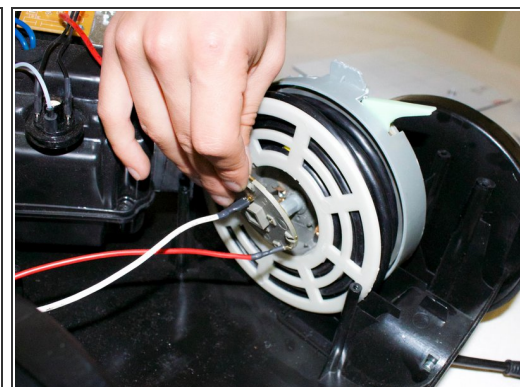
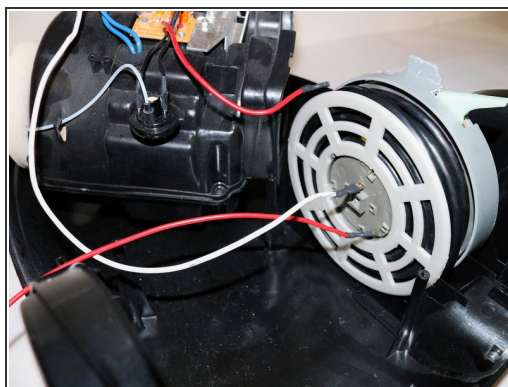
- Unscrew the top two screws on the vacuum.

Step 19



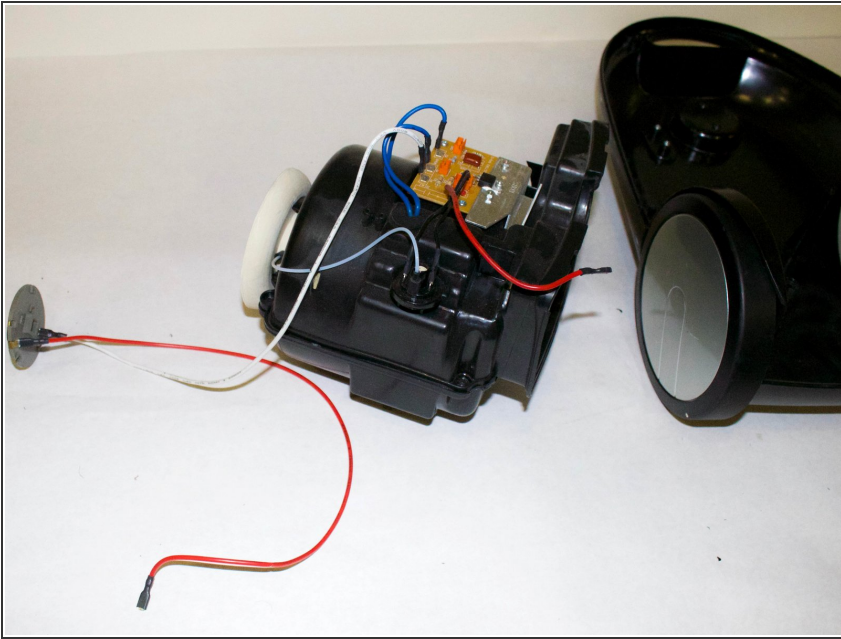
- Unscrew the back two screws.

Step 20



- Lift motor and move it over the gain access to the spool.
- Unscrew the screw on the spool.
- Remove the plastic circle.

Step 21



- Remove the motor.
- And you are done!

Step 22 — Cord w/ Reel



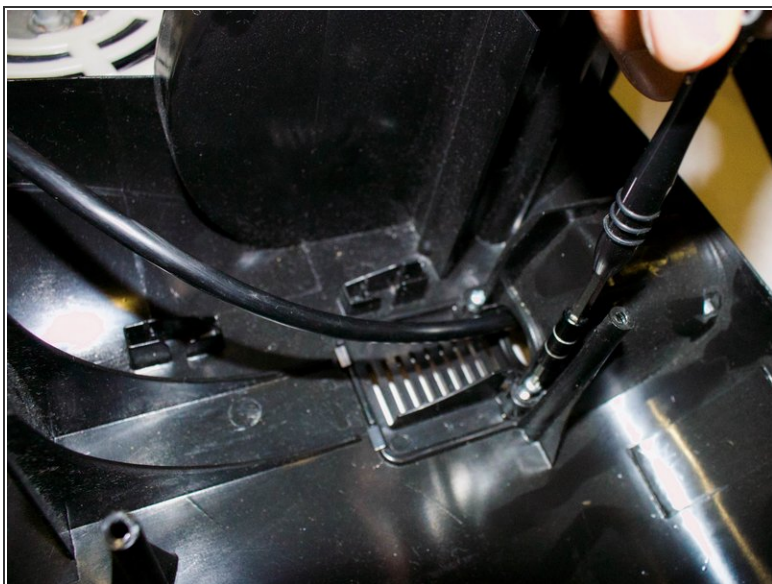
- Grab hold of the cord reel and cord. Make sure cord is retracted all the way in.

Step 23



- Pull on cord reel to remove it. You should hear a click indicating it has detached from the area indicated in the picture.

Step 24



- Use screwdriver to remove screws from either side of the cord.

Step 25



- Flip over vacuum.
- Remove grate that holds the power cord as pictured.

Step 26



- Grab hold of head of power cord and pull up.
- Power cord should disconnect from vacuum body as pictured.

Step 27



- Remove the cord reel and cord from the vacuum body.

To reassemble your device, follow these instructions in reverse order.