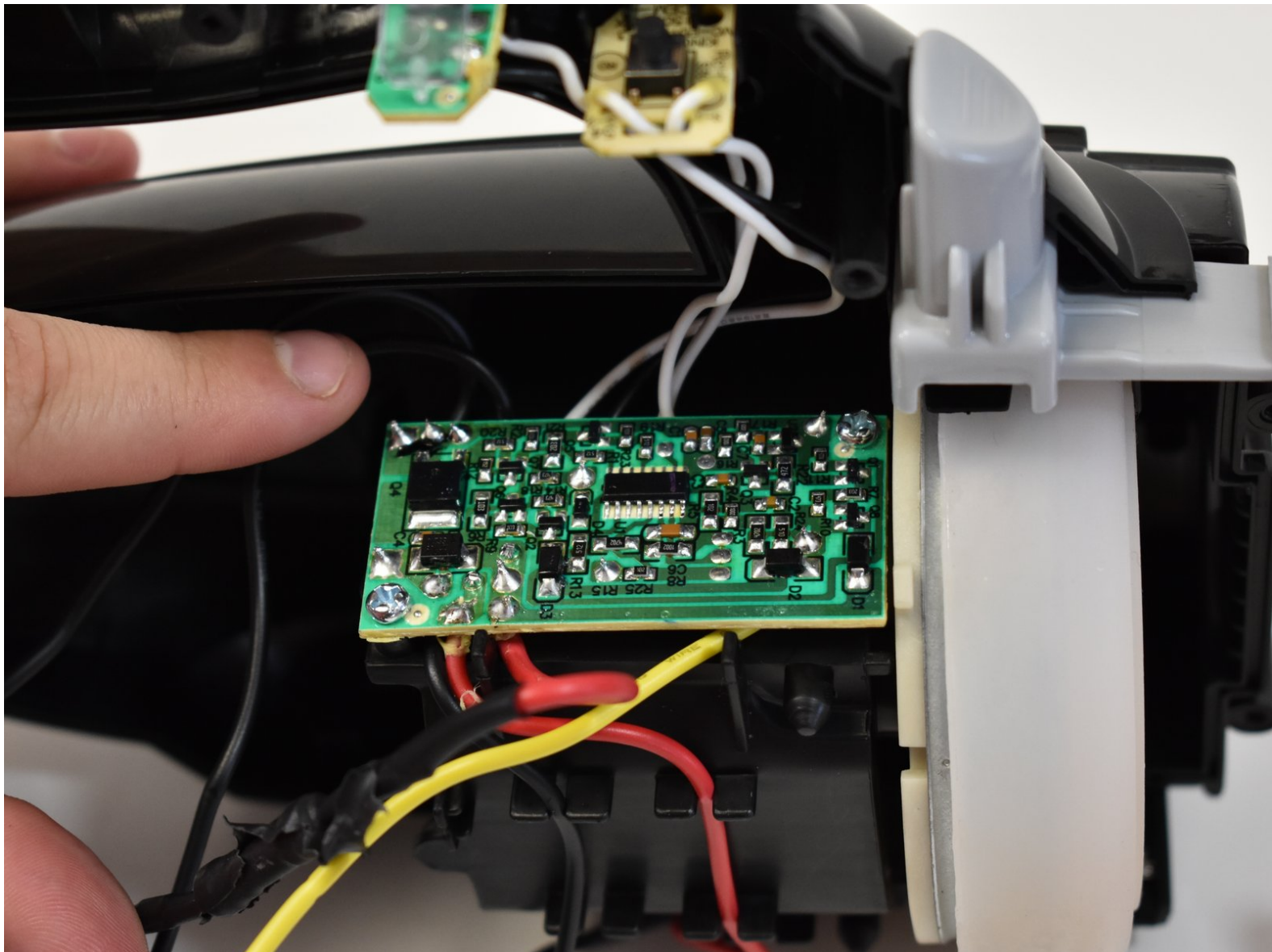




Bissell Pet Hair Eraser Motherboard Replacement

If you are experiencing electronic issues such as low power or no power, maybe it is time to replace your motherboard. This guide will show you how.

Written By: Jim Lopez



This document was generated on 2020-04-04 03:58:54 AM (MST).

INTRODUCTION

The Bissell Pet Hair Erasers motherboard is accessible using this guide. This guide will show you how to replace the motherboard.



TOOLS:

- [Phillips #2 Screwdriver](#) (1)
-

Step 1 — Dirt Cup



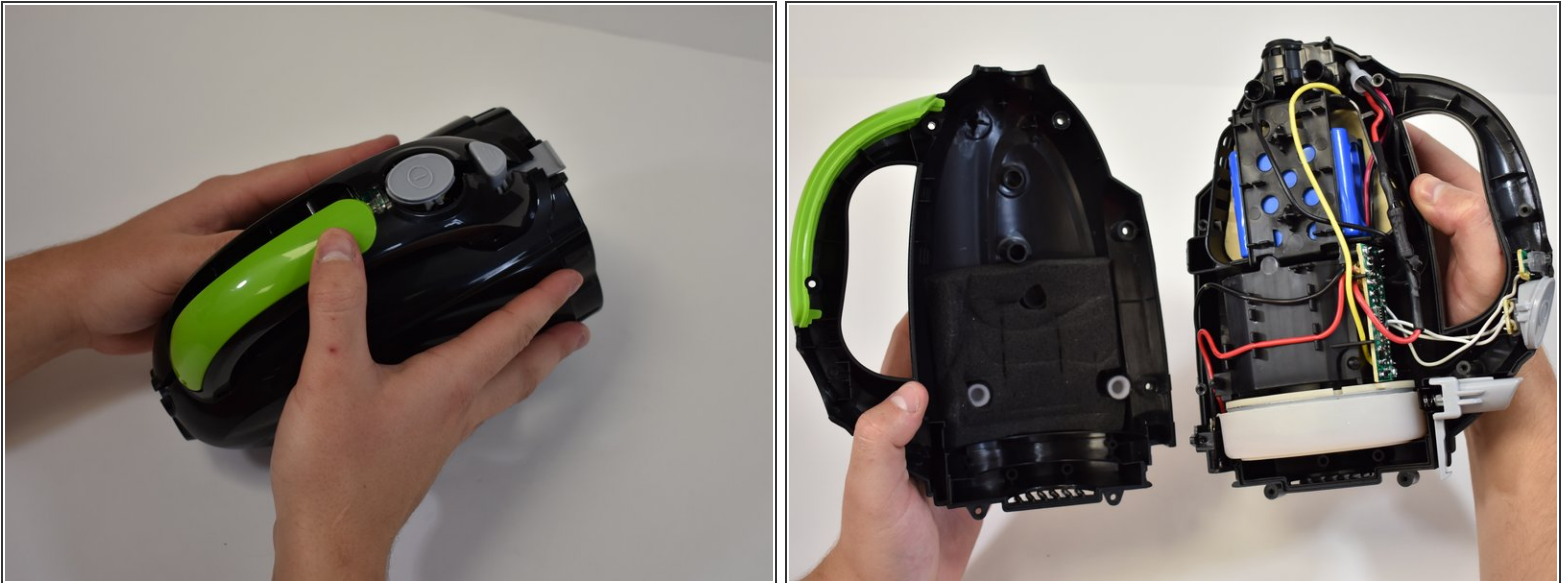
- Firmly grasp the handle and press the release button.
- Gently pull the dirt cup down and away from the vacuum body.

Step 2 — Power Button



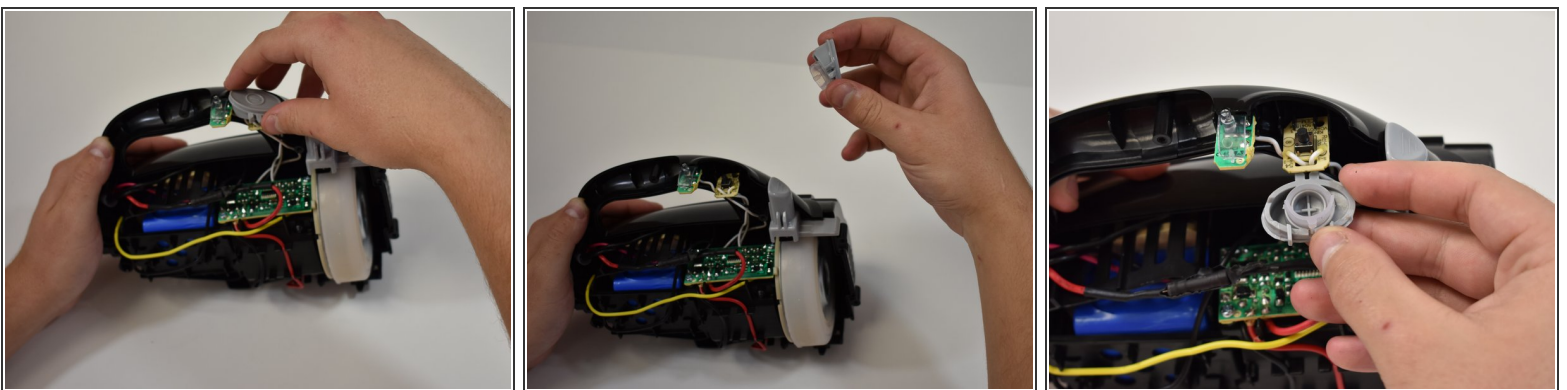
- Remove the six 1.2 mm Philips #2 screws from the handle and base.

Step 3



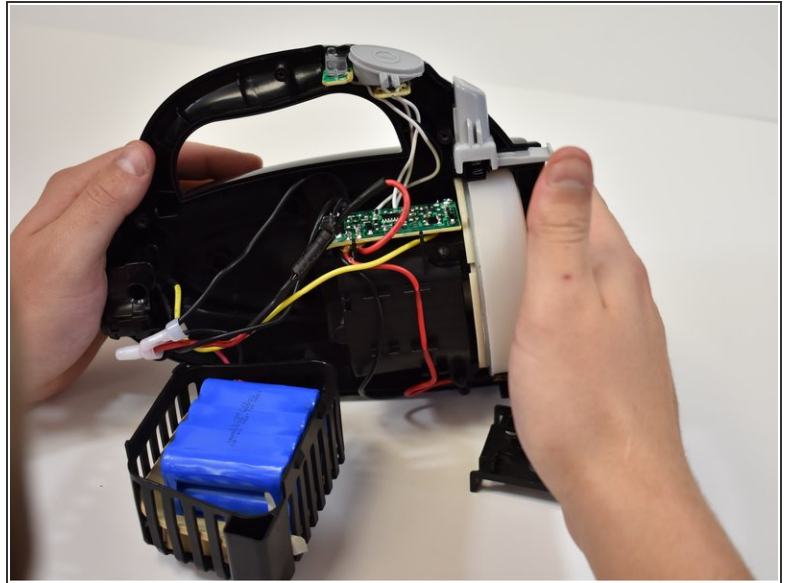
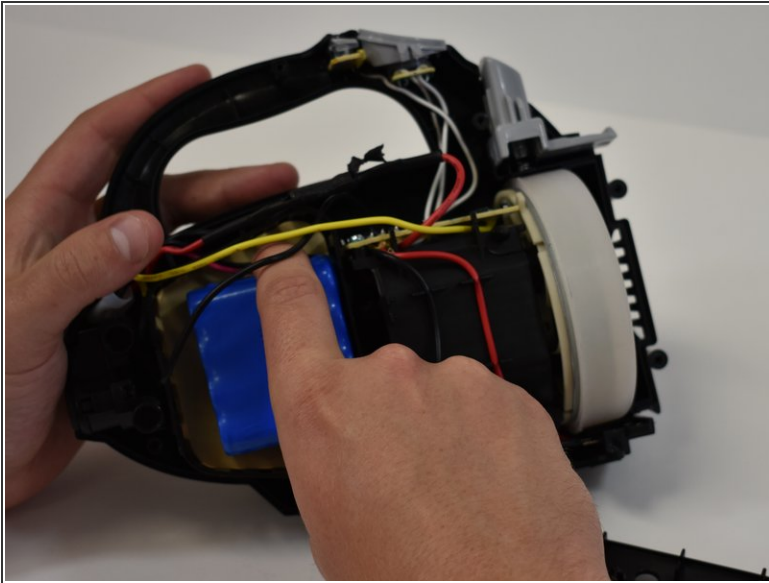
- Grasp each half of the body and gently pull apart.
- ⓘ The green handle, power button, charge light lens, and dirt cup release are not fastened in place.
- Once the case is split apart these items may come dislodged.

Step 4



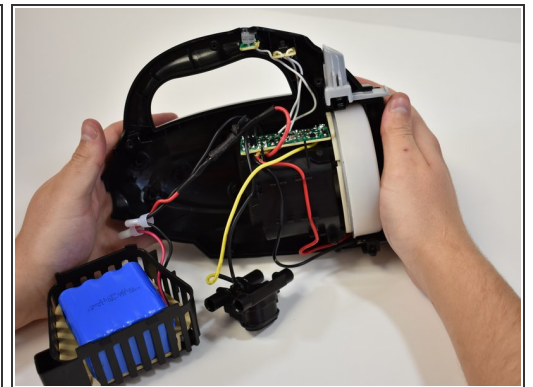
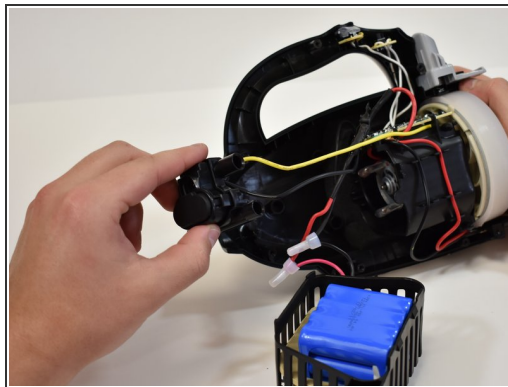
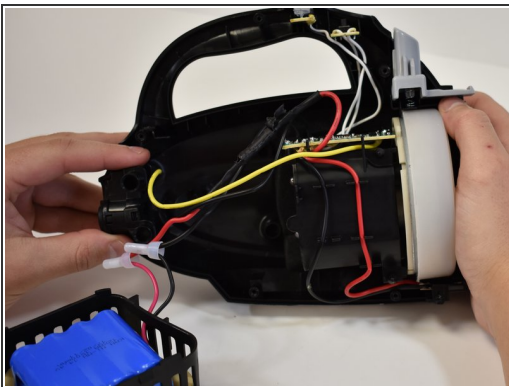
- The power button can be removed by gently lifting it off the circuitry.

Step 5 — Motherboard



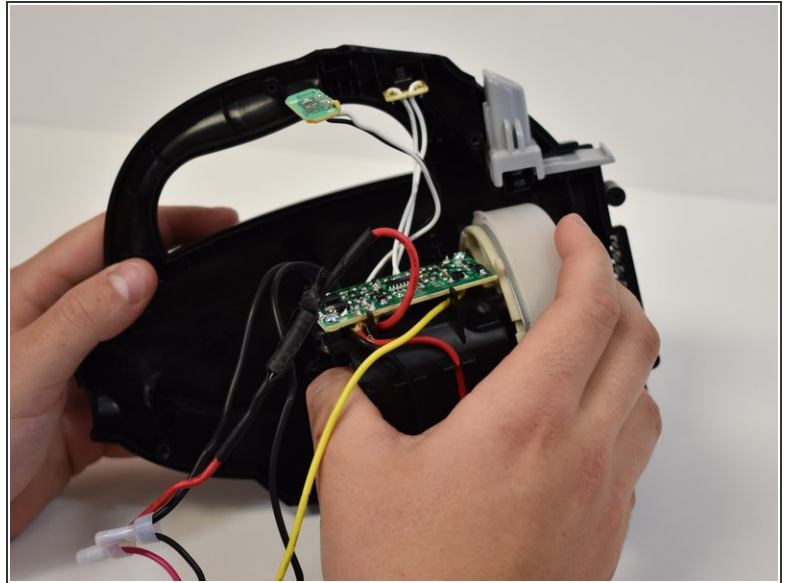
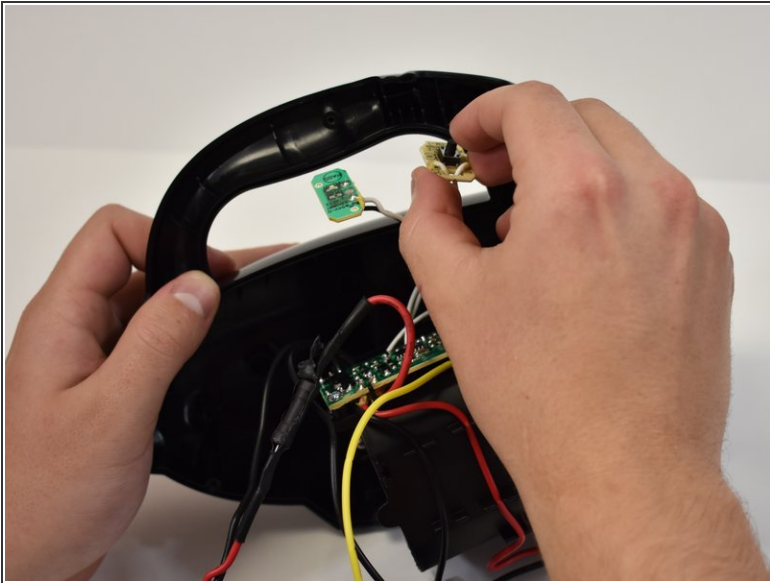
- Remove the battery plastic hold down by lifting it off the tabs.
- Remove the battery by lifting straight up.
- Position the battery aside.

Step 6



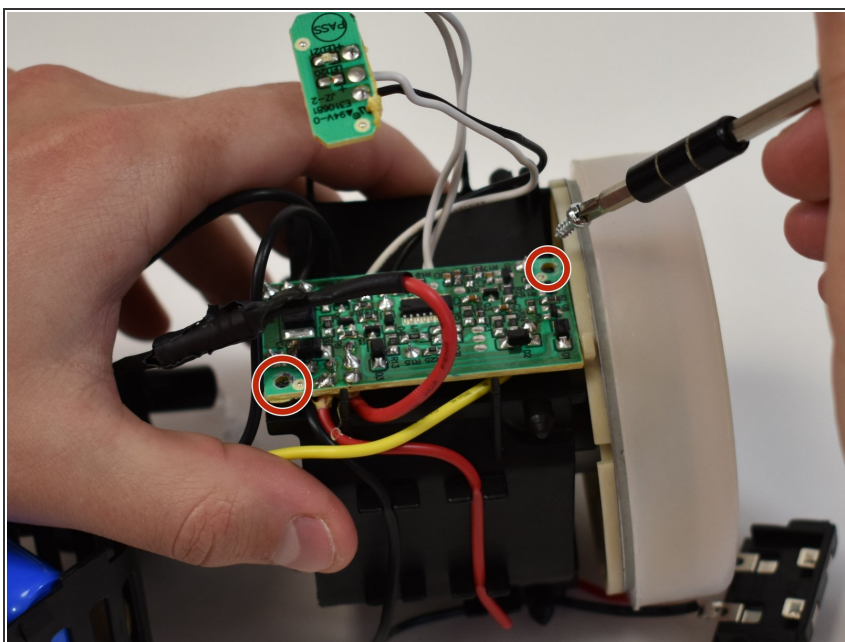
- Grasp the charger port and remove it by lifting it straight out of the case.
- Set the charger port next to the battery.

Step 7



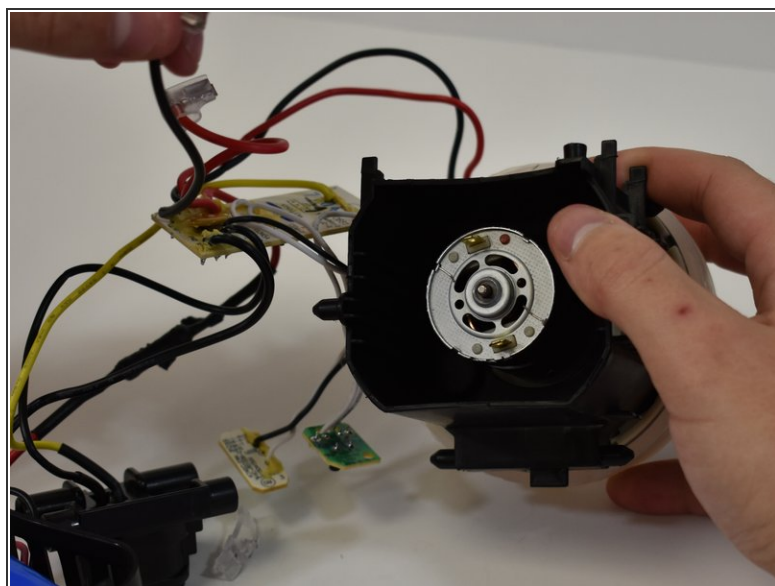
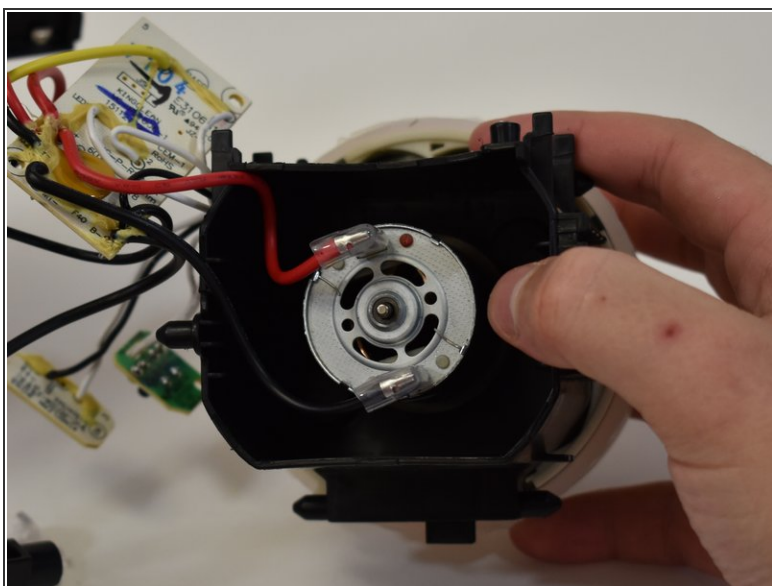
- Remove the power button and charge LED light by gently pulling straight out of the case.
- The vacuum motor can be removed by pulling straight out of the case.
- All internals are now removed.
- Set the case halves aside.

Step 8



- Remove the two 1 mm Phillips #2 screws in the shown locations.

Step 9



- Disconnect the power leads from the vacuum motor.
- ⓘ The red power lead goes on the terminal with the visible red dot.

To reassemble your device, follow these instructions in reverse order.