



# Bissell Pet Hair Eraser Motorized Brush Belt Replacement

This guide shows how to replace the belt inside the motorized brush.

Written By: Roman Dyagilev



## INTRODUCTION

Occasionally, the motorized brush can stop functioning due to a failure in the belt. This guide shows how to replace the belt inside the motorized brush.



### TOOLS:

- [Phillips #0 Screwdriver](#) (1)
- [Spudger](#) (1)
- [Metal Spudger](#) (1)



### PARTS:

- [B55MXL Belt](#) (1)

## Step 1 — Motorized Brush



⚠ Turn power OFF.

- Detach motorized brush from the vacuum.

## Step 2



- Use a spudger or a coin to turn the circular lock clockwise to unlock the brush roll.
- Remove the lock cover.

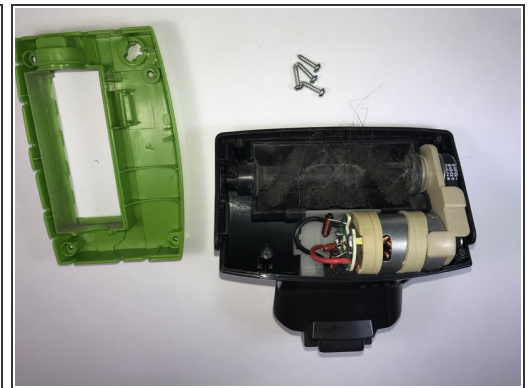
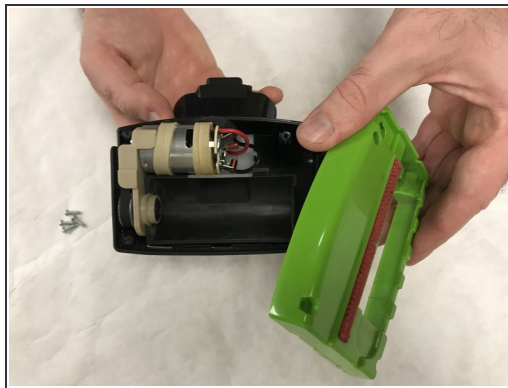


### Step 3



- Lift brush out of the enclosure.

### Step 4



- Remove the four 13.0 mm Phillips #0 screws and remove the green cover.

## Step 5



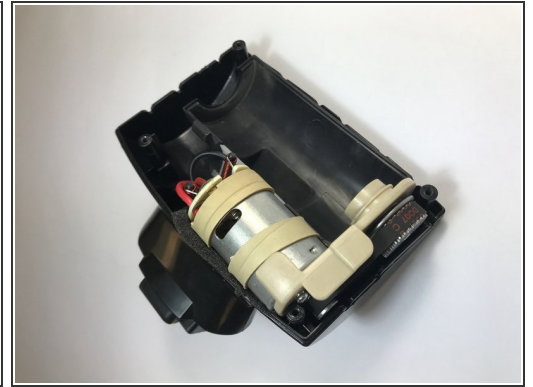
- Take out the motor assembly.

## Step 6 — Motorized Brush Belt



- Take the belt off the gear by using a spudger.

## Step 7



- Grab the new belt and slide it on to the two gears.
- Place the motor assembly back into the motorized brush enclosure.

To reassemble your device, follow the motorized brush disassembly instructions in reverse order.