



# Bissell Pet Hair Eraser Motorized Brush Replacement

This disassembly guide demonstrates how to take the motorized brush apart.

Written By: Roman Dyagilev



## INTRODUCTION

In order to access electrical components and the belt within the motorized brush, the motorized brush must be disassembled. This guide demonstrates how to replace the motorized brush.

---

### TOOLS:

- [Phillips #0 Screwdriver](#) (1)
  - [Spudger](#) (1)
-

## Step 1 — Motorized Brush



⚠ Turn power OFF.

- Detach motorized brush from the vacuum.

## Step 2



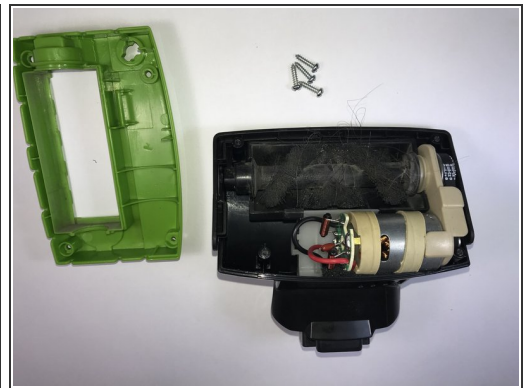
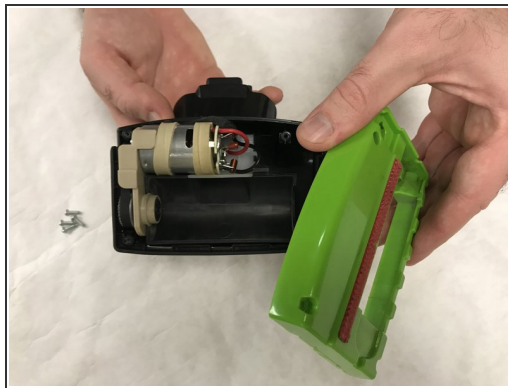
- Use a spudger or a coin to turn the circular lock clockwise to unlock the brush roll.
- Remove the lock cover.

### Step 3



- Lift brush out of the enclosure.

### Step 4



- Remove the four 13.0 mm Phillips #0 screws and remove the green cover.



## Step 5



- Take out the motor assembly.

To reassemble your device, follow these instructions in reverse order.