



Bissell Pet Hair Eraser Power Button Replacement

The power button controls the vacuum motor. The button is not fastened to the vacuum case and may become dislodged from its proper location.

Written By: Jim Lopez



INTRODUCTION

The Bissell Pet Hair Eraser power button commands the vacuum on and off. Before disassembling the case to check the power button for proper operation, visit our troubleshooting guide for vacuum won't turn on.



TOOLS:

- [Phillips #2 Screwdriver](#) (1)
-

Step 1 — Dirt Cup



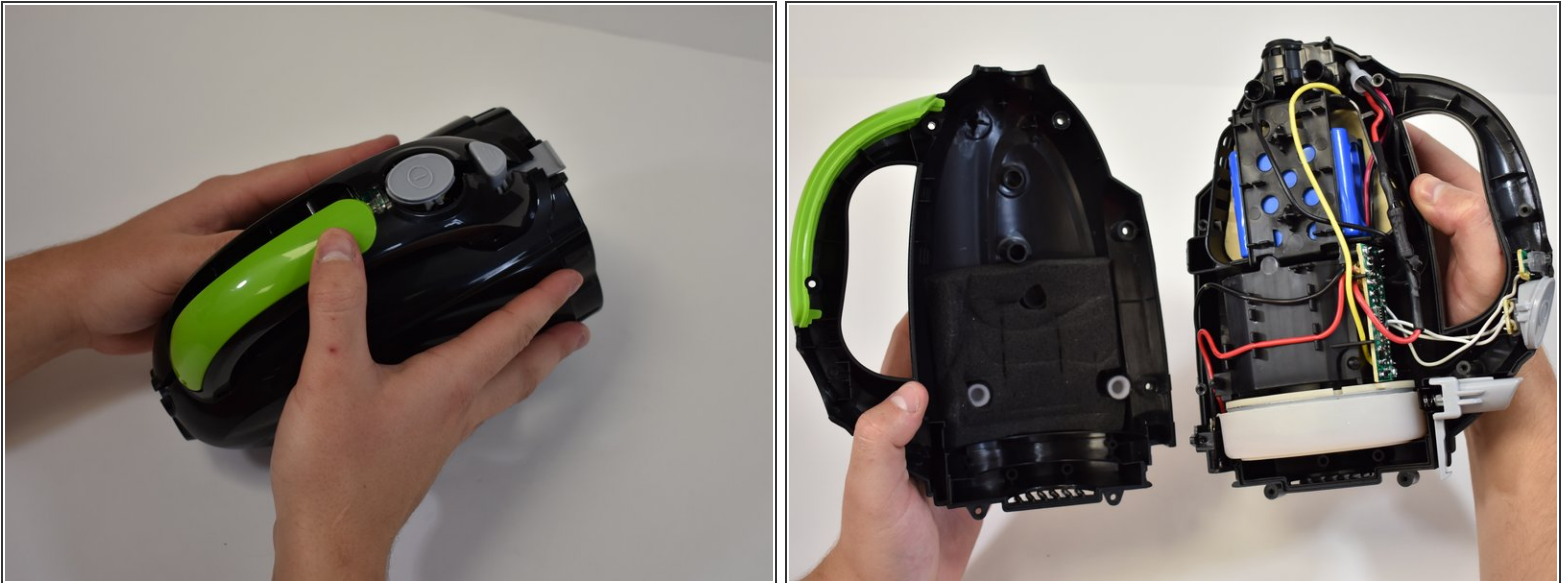
- Firmly grasp the handle and press the release button.
- Gently pull the dirt cup down and away from the vacuum body.

Step 2 — Power Button



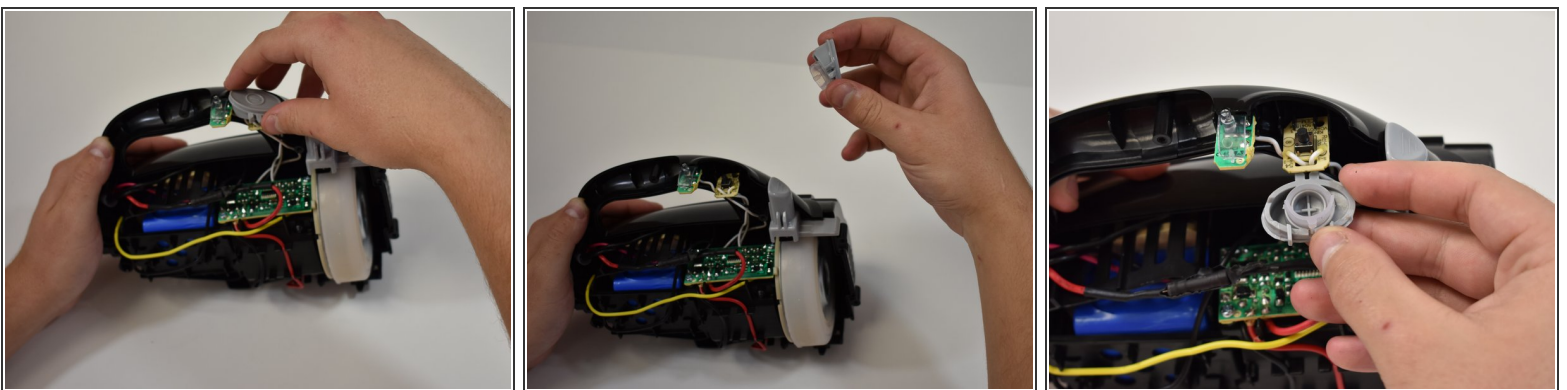
- Remove the six 1.2 mm Philips #2 screws from the handle and base.

Step 3



- Grasp each half of the body and gently pull apart.
- ⓘ The green handle, power button, charge light lens, and dirt cup release are not fastened in place.
- Once the case is split apart these items may come dislodged.

Step 4



- The power button can be removed by gently lifting it off the circuitry.

To reassemble your device, follow these instructions in reverse order.