



Bissell Powerglide Cordless Belt Replacement

Is the belt broken or not spinning anymore? Follow this guide to replace the belt.

Written By: Joseph Adam Johnson



INTRODUCTION

A damaged belt may result in your vacuum being unable to spin properly and pick up debris . This guide will show you how to remove the bottom plate and spin brush to replace your belt.



TOOLS:

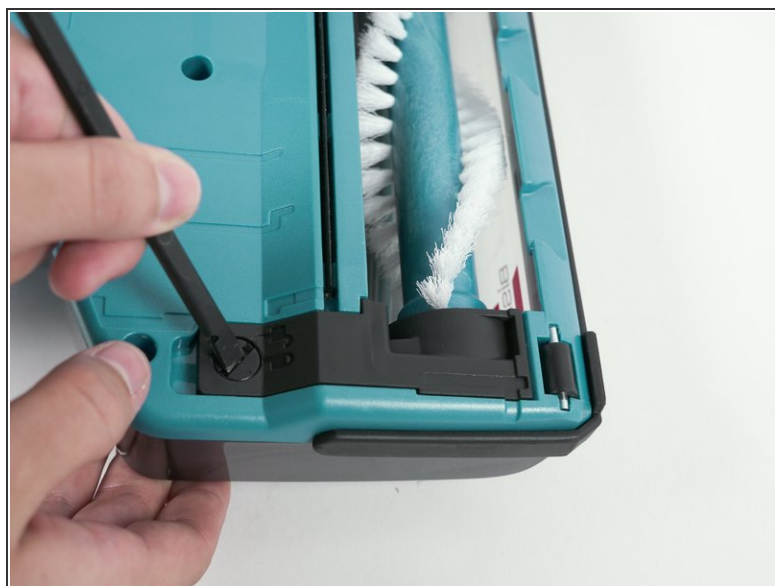
- [Phillips #1 Screwdriver](#) (1)



PARTS:

- [Bissell Powerglide Upright Vacuum Replacement Belt](#) (1)

Step 1 — Brush Roller



- Unlock the brush roll guards by twisting the lock screw to the left.
- Remove the black plastic strips you just unlocked.

Step 2



- Grasp the brush roll firmly and pull up to remove the brush roll.

To reassemble your device, follow these instructions in reverse order.