



# Bissell SpotBot Pet Control Panel Replacement

This is a guide on how to replace the spiral brushing system on a bissell spotbot pet. Use this if your spiral brushing system is not working properly.

Written By: Anthony Bonvino



---

## INTRODUCTION

This is a guide on how to replace the spiral brushing system on a bissell spotbot pet. Use this if your spiral brushing system is not working properly.



### TOOLS:

- [Phillips #1 Screwdriver](#) (1)
-

## Step 1 — Control Panel



- Start here.

## Step 2



- Remove the container on the right side of the vacuum.

## Step 3



- Lift the tap on top of the vacuum, and then remove the container on the left side of the vacuum.

## Step 4



- Remove the left container of the vacuum.



## Step 5



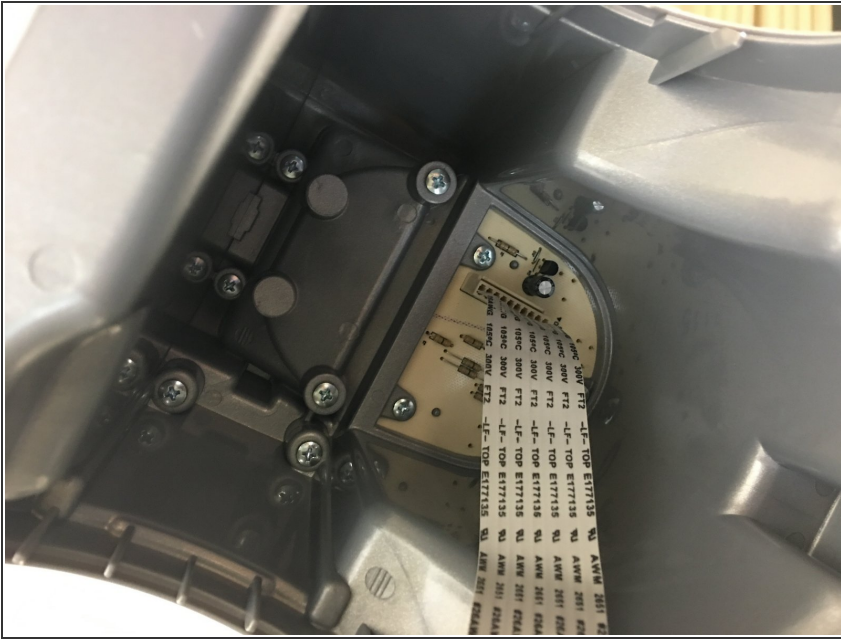
- Remove the four screws on the top of the device.

## Step 6



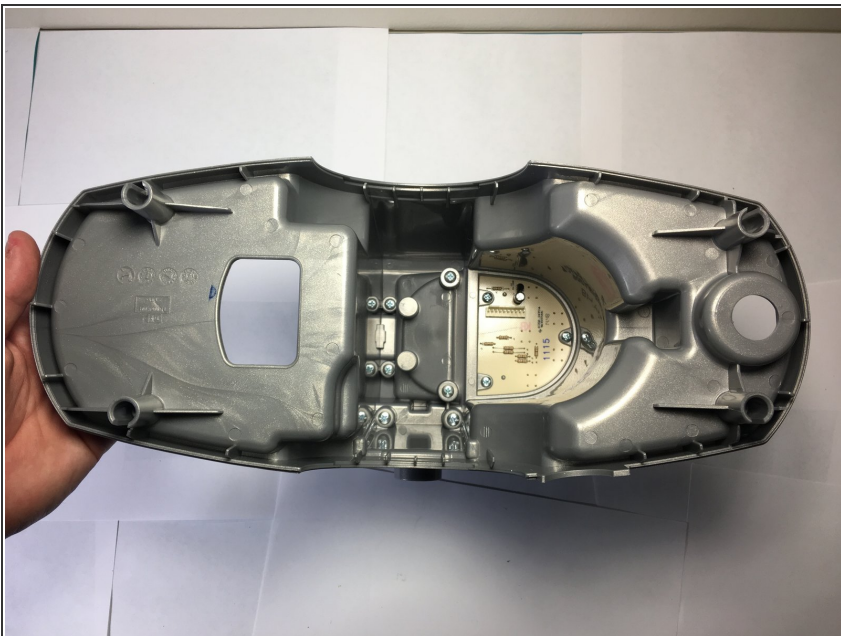
- Lift the top of the device off once the screws are removed.

## Step 7



- Unplug the ribbon cable from the motherboard.

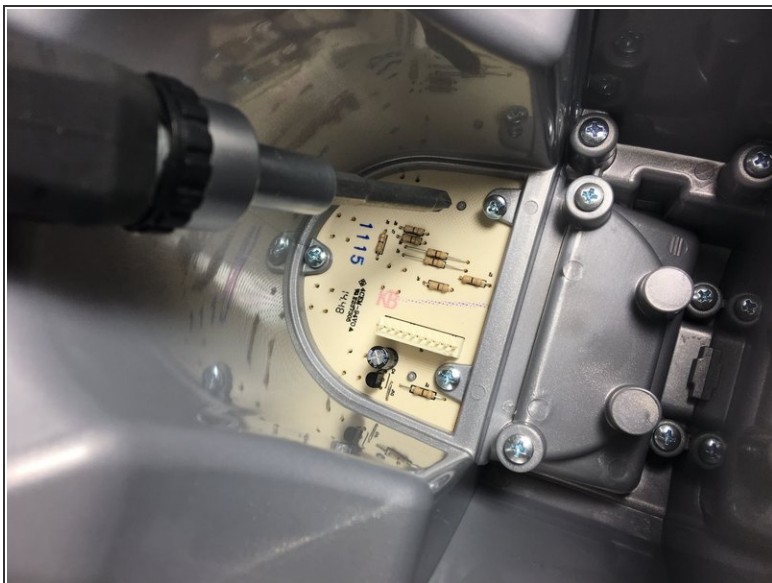
## Step 8



- Separate the top piece and flip it upside down.

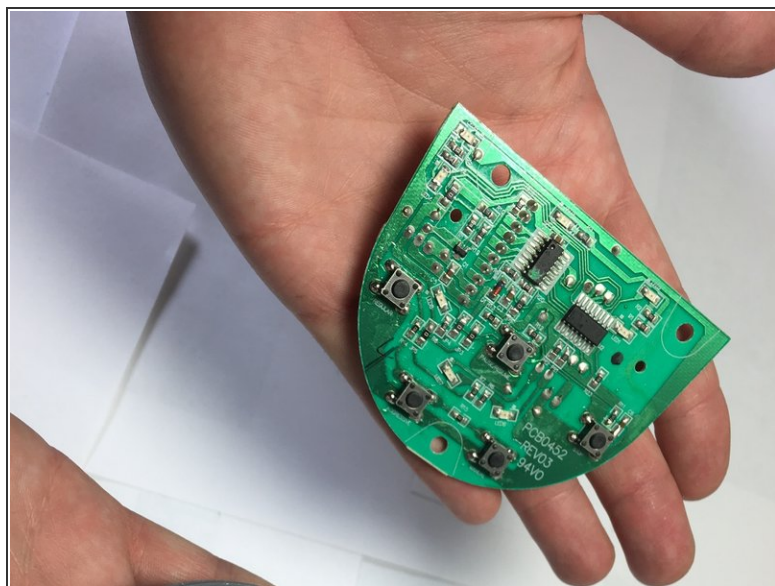
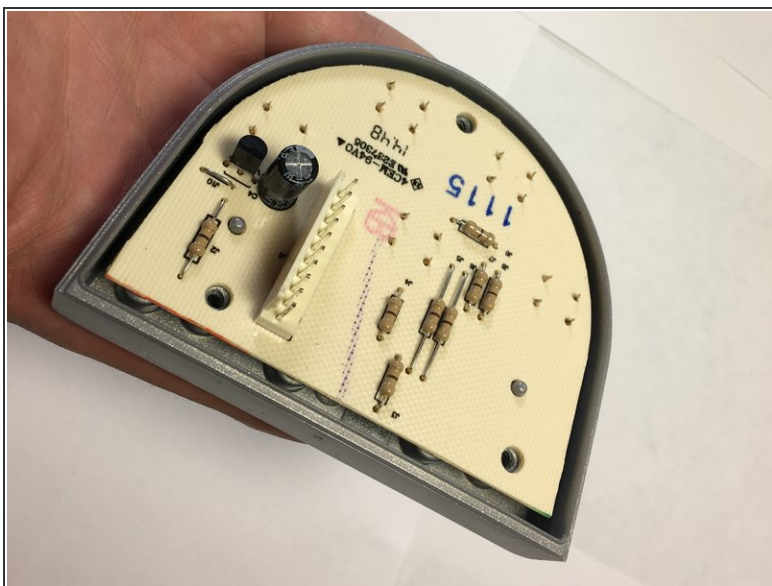


## Step 9



- Remove the screws holding the motherboard in place.

## Step 10



- Remove the motherboard from the top piece. Repair or replace the motherboard if it is faulty.

To reassemble your device, follow these instructions in reverse order.