



# Bissell SpotBot Pet Hose Assembly Replacement

In this guide I will be replacing the hose assembly for the Bissell Spotbot Pet. Please note this guide is for the model #33N8A.

Written By: Tim Lough



## INTRODUCTION

In this guide I show you how to replace the Hose & Cuff Assembly on a Bissell SpotBot Pet carpet cleaner. Mine was left in storage for a while so the hose was very nasty so I decided to just replace it with a new one.



### TOOLS:

- [Phillips #0 Screwdriver](#) (1)
- [Slip Joint Pliers](#) (1)
- [Utility Knife](#) (1)



### PARTS:

- [Hose & Cuff Assembly](#) (1)  
*Part #B-203-7478*

## Step 1 — Cleaning solution tank



- Remove cleaning solution tank.

## Step 2 — Waste storage tank



- Remove waste storage tank.



### Step 3 — Top cover



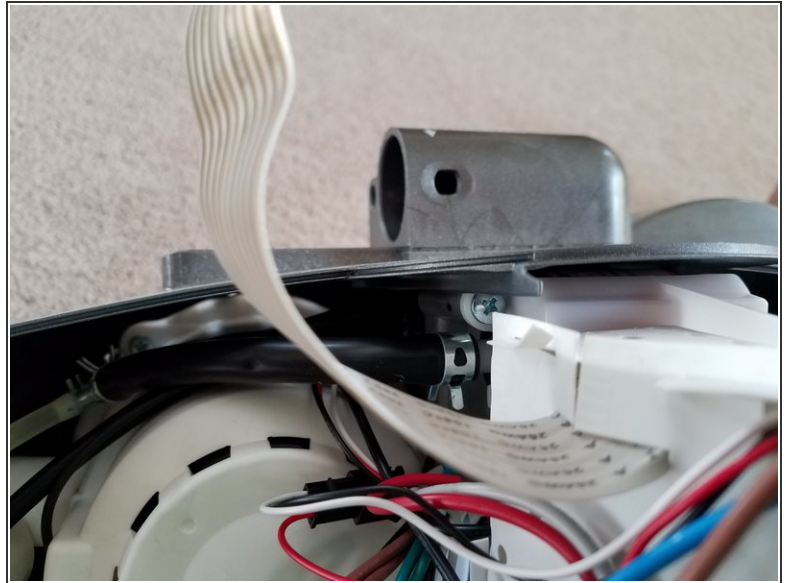
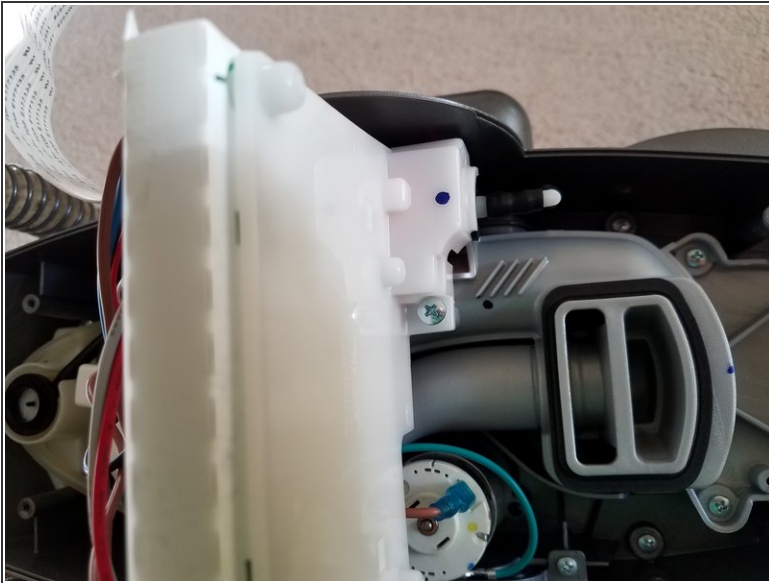
- Remove (4) Phillips head screws.

### Step 4 — Top cover removal



- Remove top cover. Unplug ribbon cable from control board and set top aside.

## Step 5



- Remove the two screws and gently move white box with wires out of the way.

## Step 6 — Solution tubing removal



- Locate end of clear rubber tubing and remove clamp with pliers. It is nearly impossible to get the hose end off of the hose barb, so I just cut the hose close to the barb, then gently scored the tubing left on the barb to get it off.

## Step 7



- Remove hose assembly by gently twisting up on hose. This end is just snug-fit with 2 O-Rings.

## Step 8



- Install new hose assembly by adding a little silicone-based grease on the 2 o-rings and inserting the hose end into the hole by the waste tank inlet port. Then attach the clear tubing on the barb, then replace the hose clamp.

To reassemble your device, follow these instructions in reverse order.