



# Bissell SpotBot Pet Repair Brush Motor Replacement

This replacement guide will cover how to replace the brush motor on the Bissell SpotBot Pet carpet cleaner.

Written By: Anthony Bonvino



---

## INTRODUCTION

This replacement guide will cover how to replace the brush motor on the Bissell SpotBot Pet carpet cleaner.



### TOOLS:

- [Pro Tech Toolkit](#) (1)
-

## Step 1 — Brush Motor



- Set your Bissell SpotBot Pet on a flat surface to begin your repair.

## Step 2



- Lift straight up on the right container to remove it from the vacuum.

### Step 3



- Lift up on the tab on the top of the vacuum and then lift straight up on the left container to remove it.

### Step 4



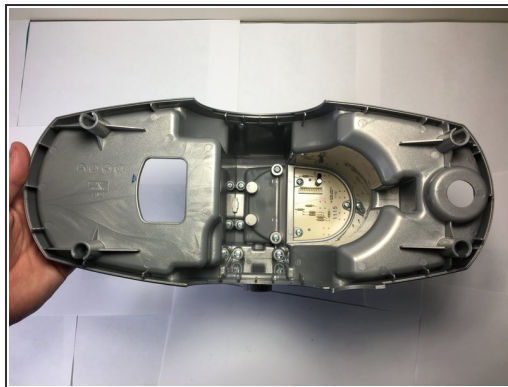
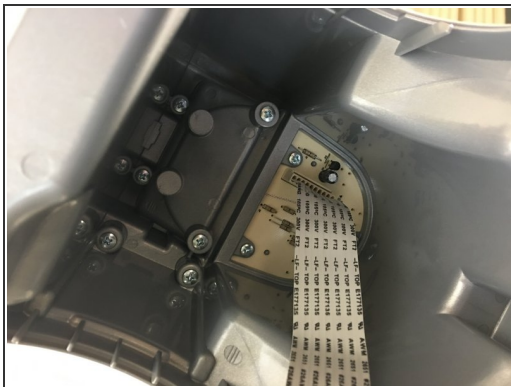
- Remove the vacuum tube by sliding it out of its holder on the side.

## Step 5



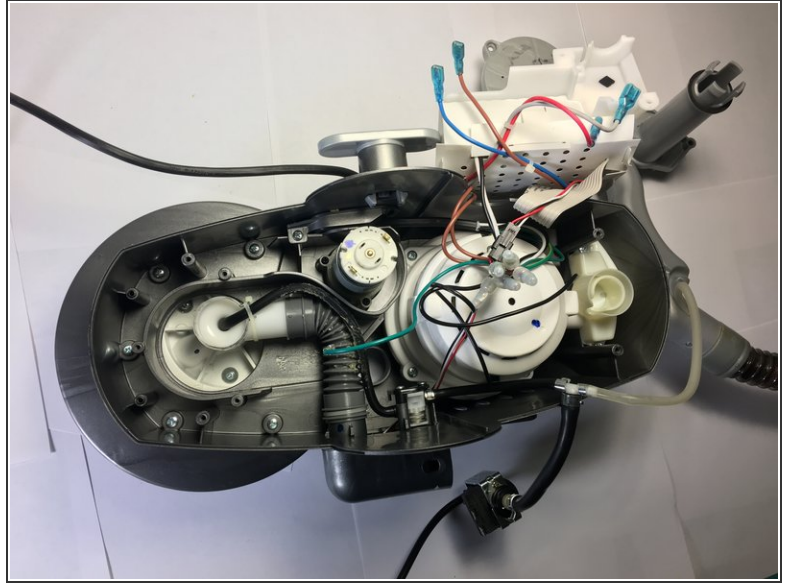
- Unscrew the 4 screws on the top of the device and gently lift the top half up.  
⚠ A ribbon cable is still attached to the underside of the top half.

## Step 6



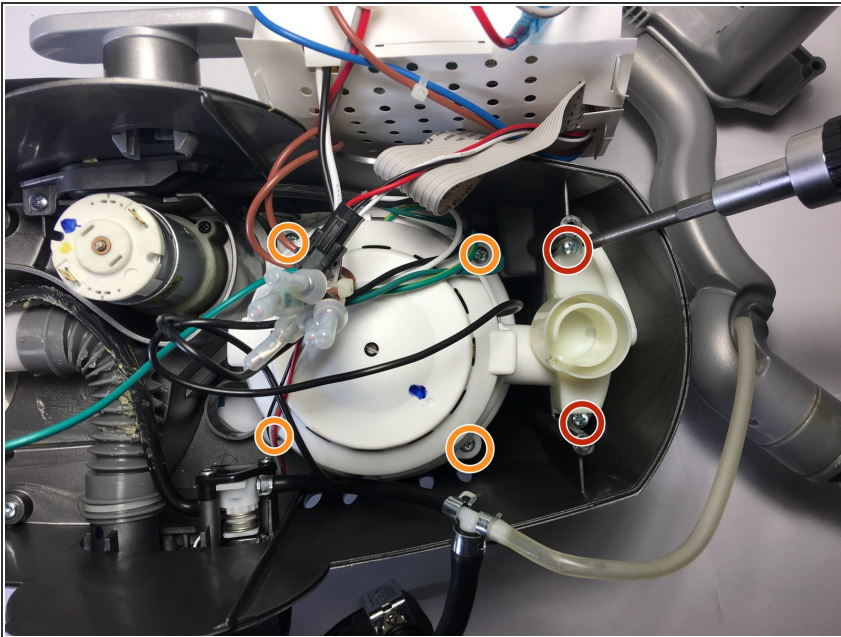
- Unplug the ribbon cable connecting the bottom half to the control panel on the top half. Set the top off to the side.

## Step 7



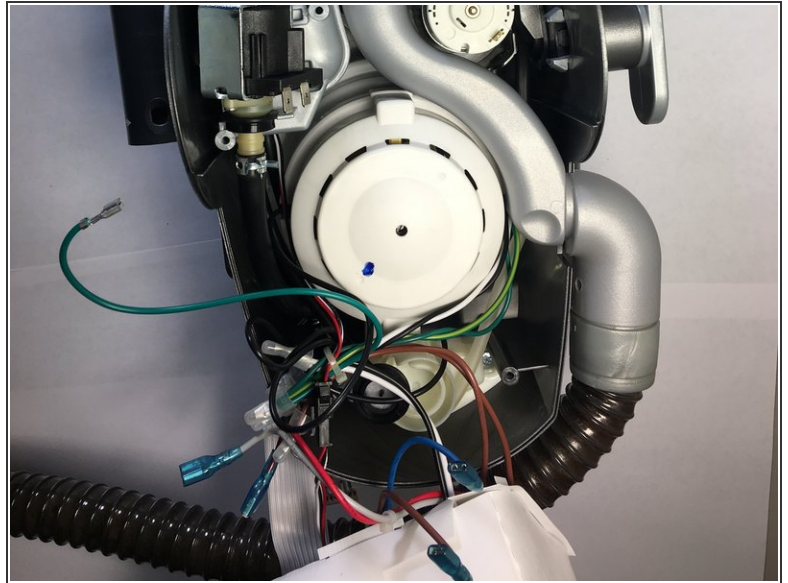
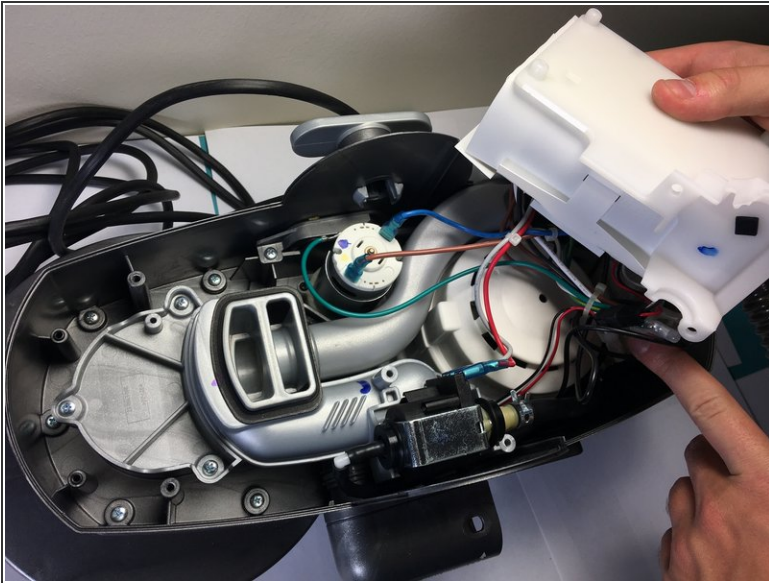
- Unscrew the screw next to the white plastic wiring harness box. This will allow you to set the box off to the side.

## Step 8



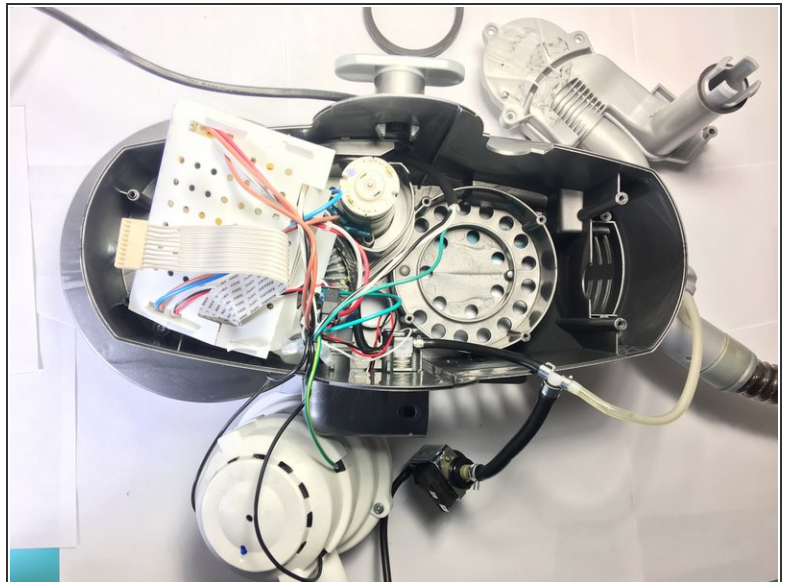
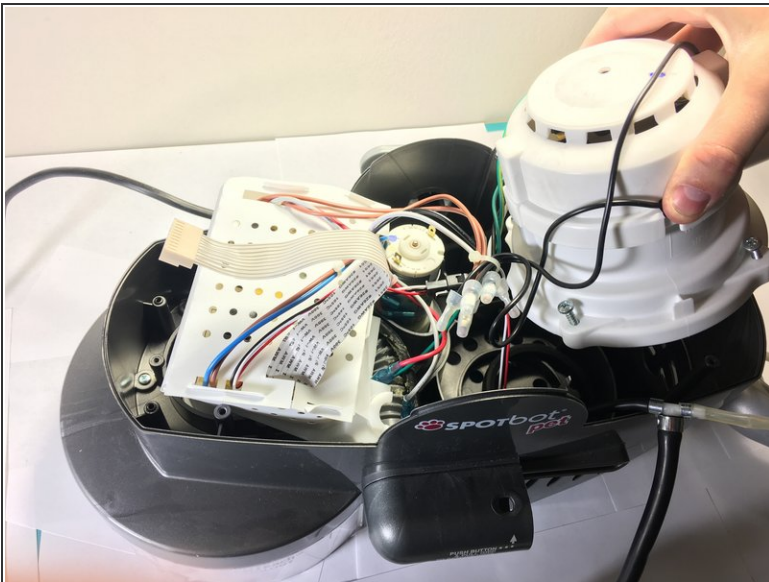
- Unscrew the screws on the plastic holder on the right side of the device. Remove the plastic holder from the vacuum.
- Unscrew the screws that mount the vacuum motor to the device

## Step 9



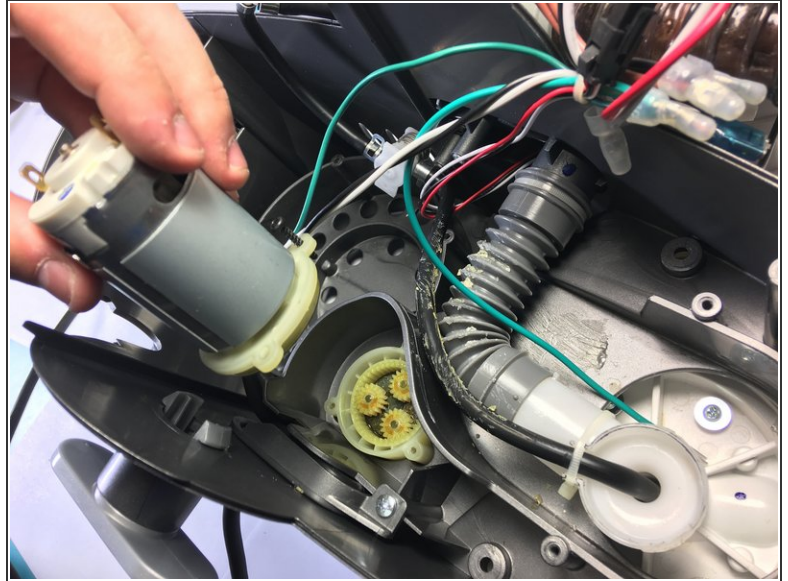
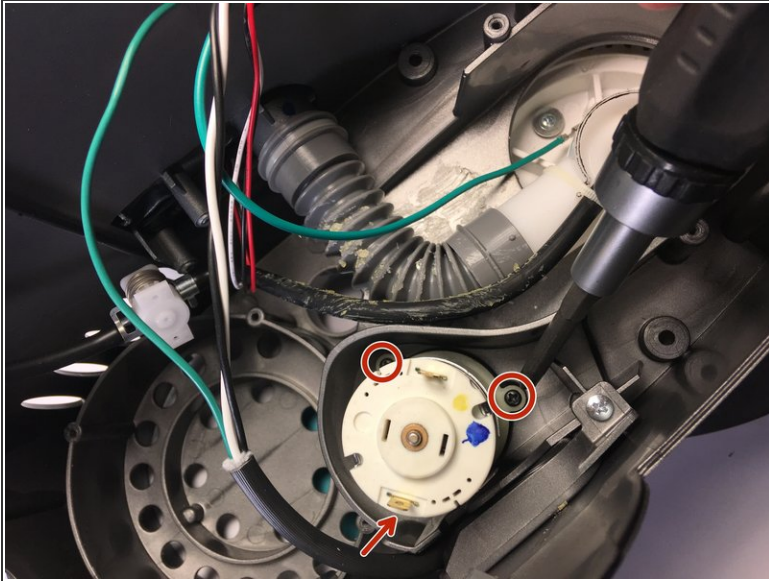
- Unplug the wires connecting the motor to the wiring harness.

## Step 10



- Lift the white suction motor from the right side of the device. Lift it straight up and set it off to the side of the vacuum.

## Step 11



- Remove the screws for the brush motor. This motor controls the automatic scrubbing mechanism.

To reassemble your device, follow these instructions in reverse order.