



# Black Diamond Moxie Teardown

Opening the Black Diamond Moxie, 55 lumens

Written By: Quintus “Quanten” Tunnel



## Step 1 — From the Outside



- Pull here to open the battery case

## Step 2 — The Battery Case



- Space for three AAA batteries here
- Unscrew these
- and these phillips screws here.
- ☑ Keep in mind, that this are different screws, so don't mix them
- This part will be a bit complicated to get it back together

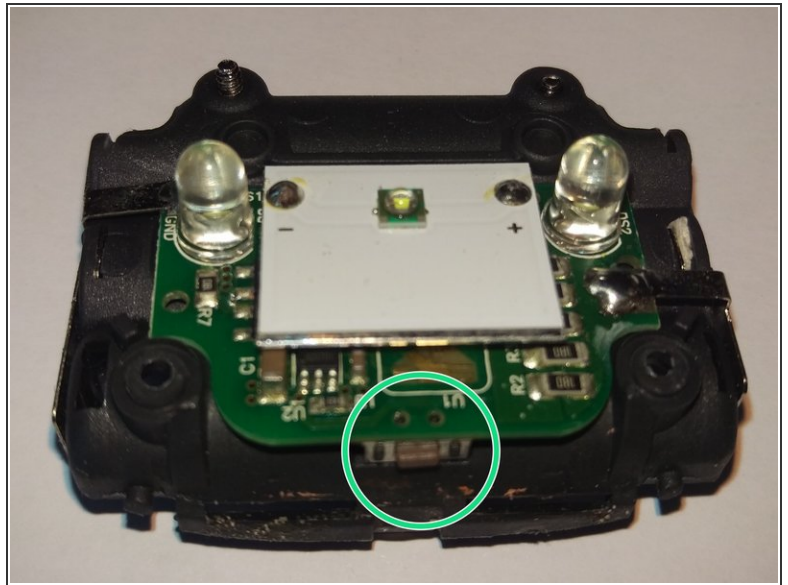
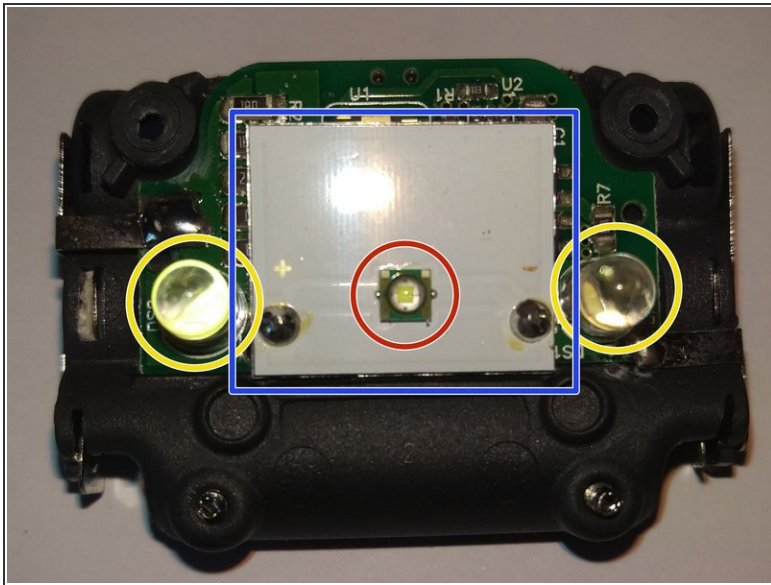


## Step 3 — The Front



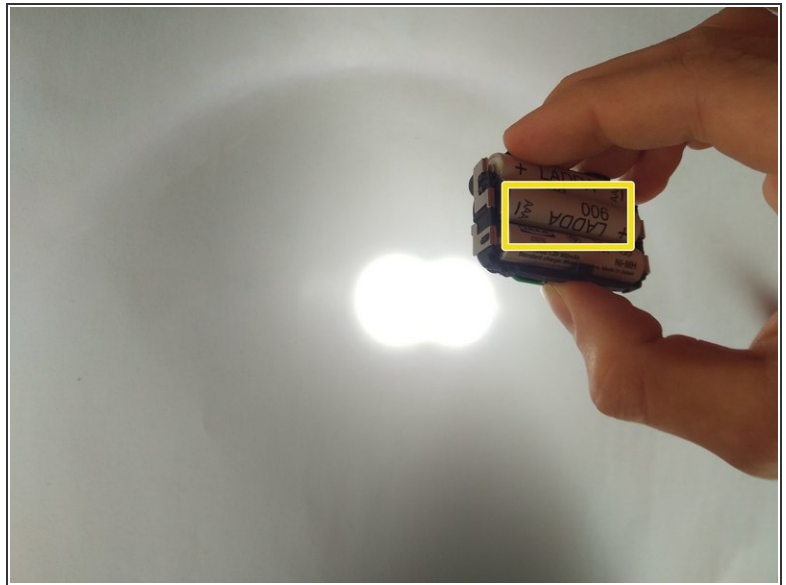
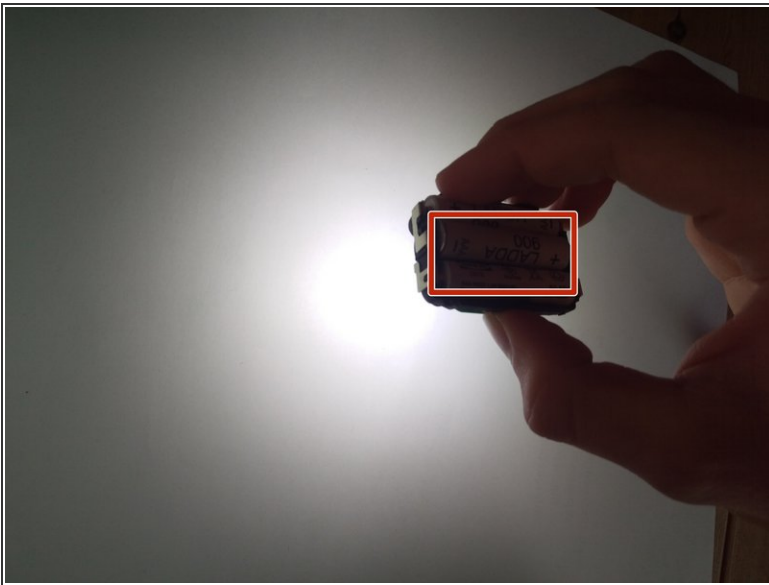
- The front has three parts
  - The case,
  - the reflector
  - and the lens.

## Step 4 — The PCB



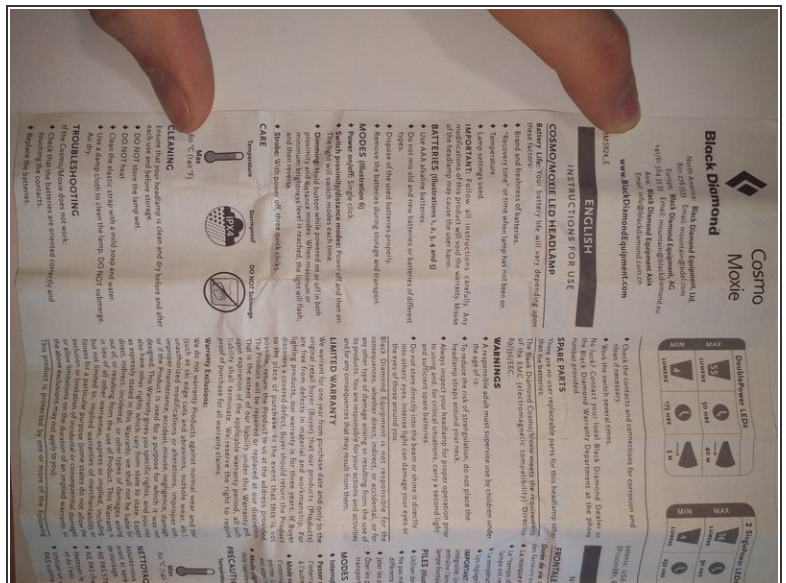
- The "high power" LED with 55 lumens
- This seems to be a cooling plate for the high power led
- The other two LEDs with 16 lumes
- The button

## Step 5 — The Light Spot without the Lens



- The high power LED would make a way better near field wide angle lamp without the lens.
- In reality the light is even broader distributed than visible on the image.
- This is the light spot of the two low power LEDs.

## Step 6 — The Manual



- The english part of the manual

To reassemble your device, follow these instructions in reverse order.