



# Black and Decker BDERO100 Motor Replacement

This guide describes how to replace the motor assembly from inside of the BLACK and DECKER BDERO100 5 inch sander.

Written By: Irene Zubillaga



## INTRODUCTION

This guide describes how to replace the motor assembly from inside of the BLACK and DECKER BDERO100 5 inch sander. The tools that you will need for this process are the TR20 Torx Security bit driver or equivalent, the plastic spudger & the plastic opening tool.

---

### TOOLS:

- [JIS Driver Set](#) (1)
  - [T20 Torx Screwdriver](#) (1)
  - [Heavy-Duty Spudger](#) (1)
  - [iFixit Opening Tools](#) (1)
-

## Step 1 — Hook and Loop System



- Remove the sanding paper from the velcro.

## Step 2



- Select the JIS - J1 bit or the most appropriate bit to match the screws for your model.

### Step 3



- Use the Bit Driver to take off the four 12.5 mm Phillips screws at the base of the hook-and-loop system.

**i** Be careful not to lose the lock washers (black rings).

### Step 4



- Once all screws and washers have been removed, hold the hook and loop system and separate it from the device.



## Step 5 — Chassis



- Use the nylon spudger to remove the rubber ring from the filter attachment section.
- ⓘ The easiest way to do this is to place the spudger sideways and pulling out the ring.

## Step 6




- Use the TR20 Torx Security bit driver to unscrew the five 18.75mm Phillips screws from the warning label side of the chassis.

## Step 7



- Grab the plastic opening tool and place it on the separation line between both sides of the chassis.
- Separate both sides and open the device.

 Be careful not to lose or detach any internal parts while opening the sander.

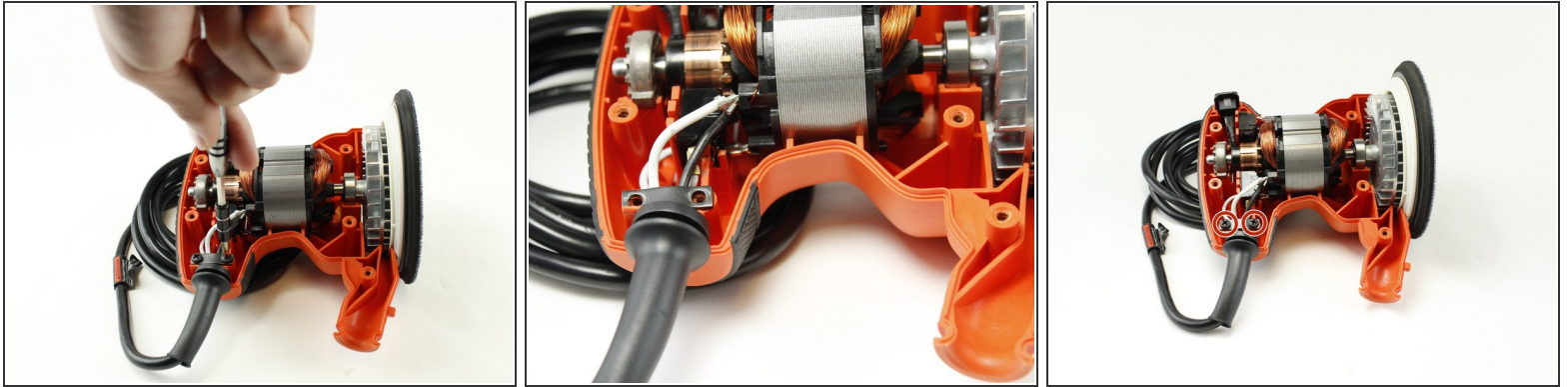
## Step 8



- Hold the chassis and separate it from the device.



## Step 9 — Motor



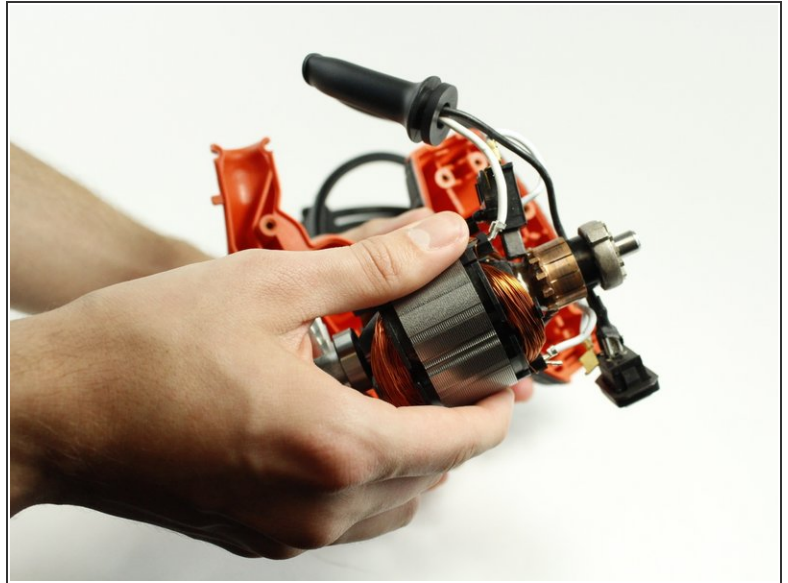
- Use the bit driver with the JIS - J1 bit to remove the two 12.5 mm phillips screws holding the cord clamp to the chassis.

## Step 10



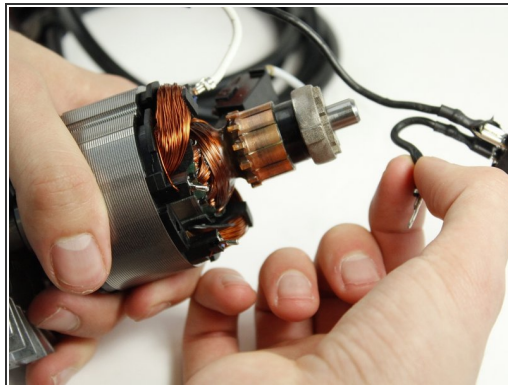
- With your hands, hold and separate the power button from the external case by pulling gently.

## Step 11



- Hold the motor and gently pull to remove from chassis.

## Step 12



- Gently pull on all cables connected to the motor to remove.



## Step 13



- Once all cables are disconnected, you can proceed to replace the motor.

To reassemble your device, follow these instructions in reverse order.