



Black and Decker BL3000S button panel replacement

Upon the completion of this guide you will have successfully gained access to your BL3000S buttons.

Written By: Austin Abernathy



INTRODUCTION

You will need to have completed the prerequisite guides prior to this guide in order to execute it.



TOOLS:

- [Phillips #1 Screwdriver](#) (1)
 - [Flathead 3/32" or 2.5 mm Screwdriver](#) (1)
 - [TA20 Screwdriver](#) (1)
-

Step 1 — Blender Base



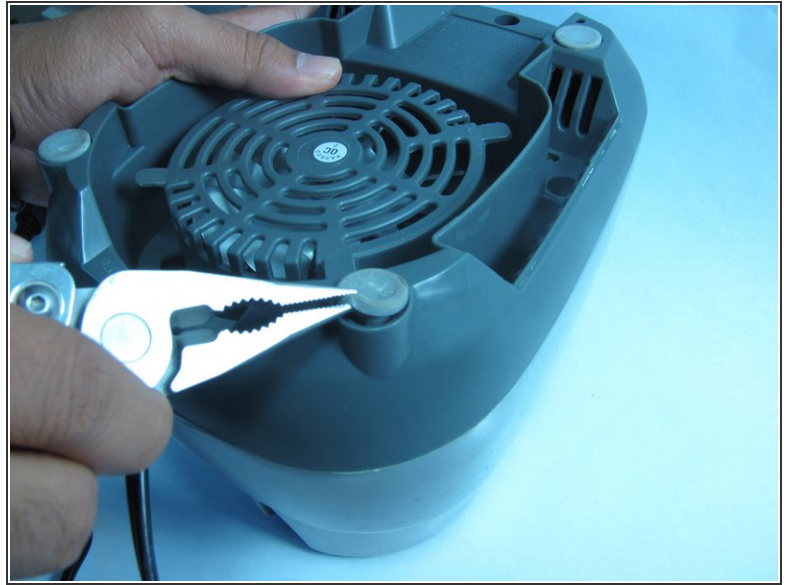
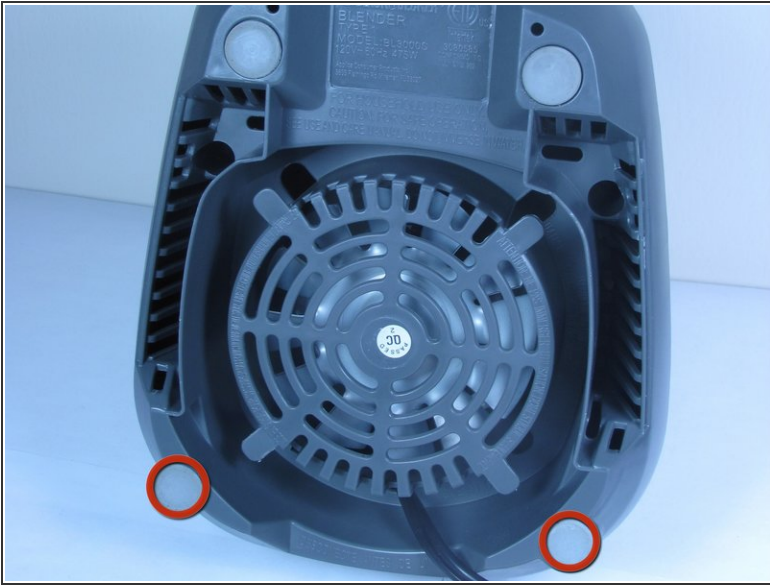
- ⓘ Before disassembling the blender base, make sure the blender is disconnected from any power outlet.
- Lift the jar straight up from the base without tilting the jar.

Step 2



- Remove the top three 1/4 inch base screws using a Philip's head screwdriver.

Step 3



- Remove the two base leg covers next to the power cord using pliers or a flat-head screwdriver.

i This provides access to the base screws beneath.

Step 4

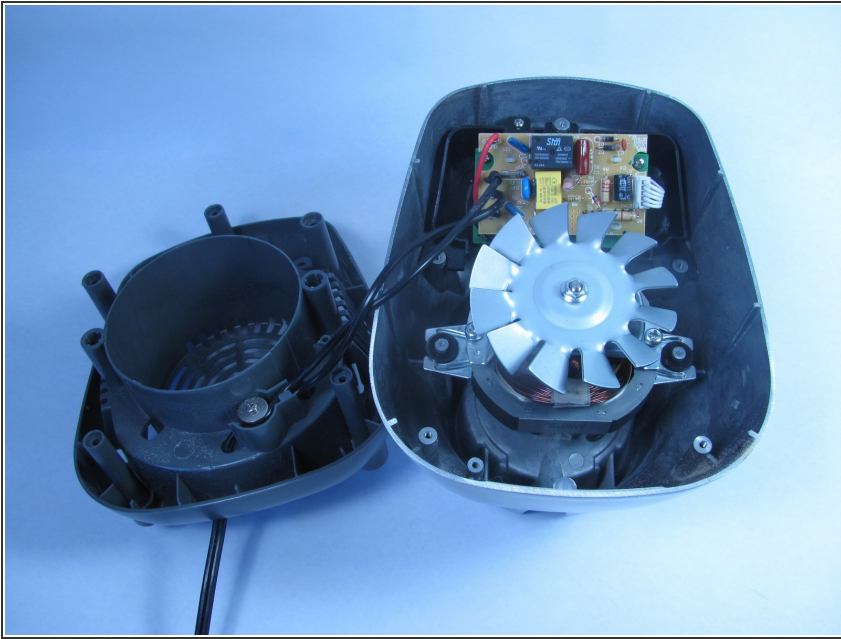


- Remove the following screws that secure the top and bottom halves of the base.
 - One 1/4 Phillips screw
 - One TA-20 screw

i Both screwdrivers must have a minimum of a three inch shank (length).

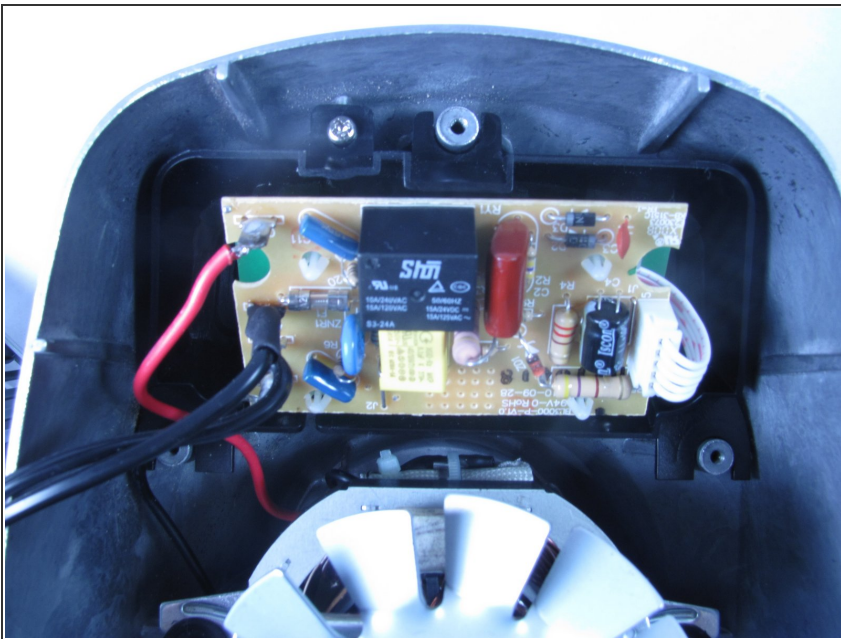
i Screwdrivers with extenders will not fit down the access holes.

Step 5



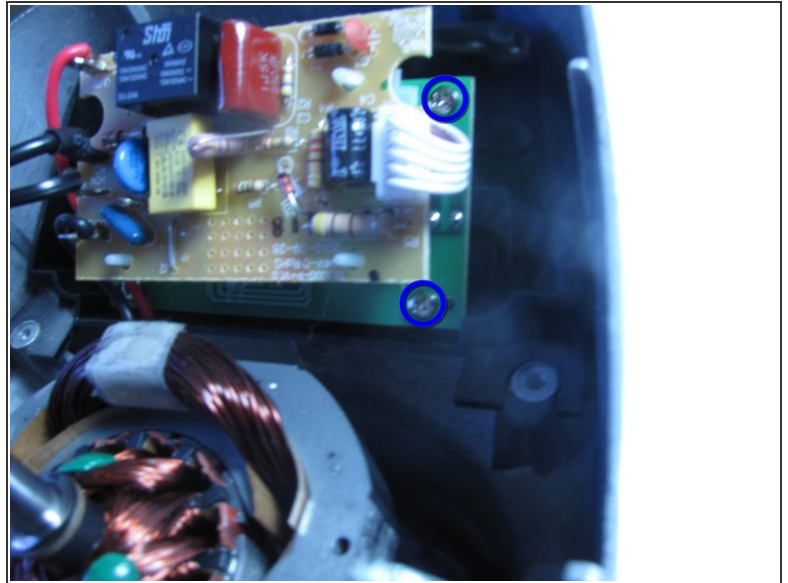
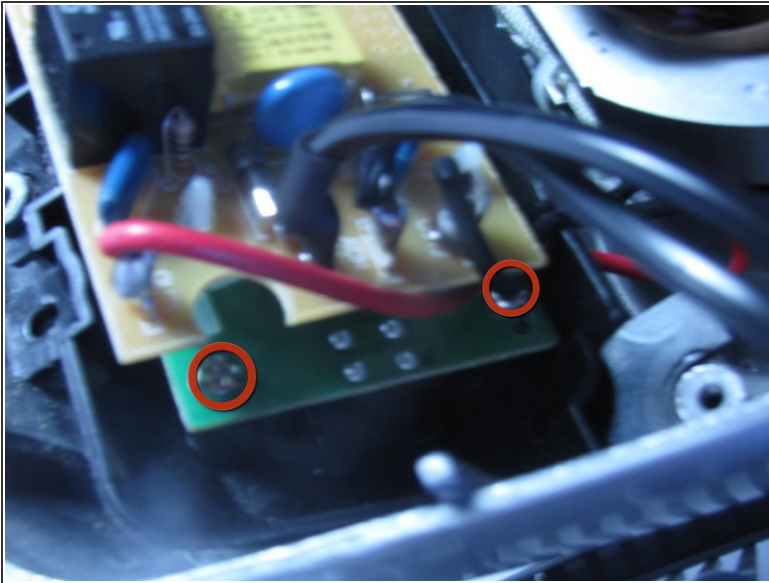
- Lift the top half of the base from the bottom half of the base to reveal the internal mechanism.

Step 6 — Circuit Board



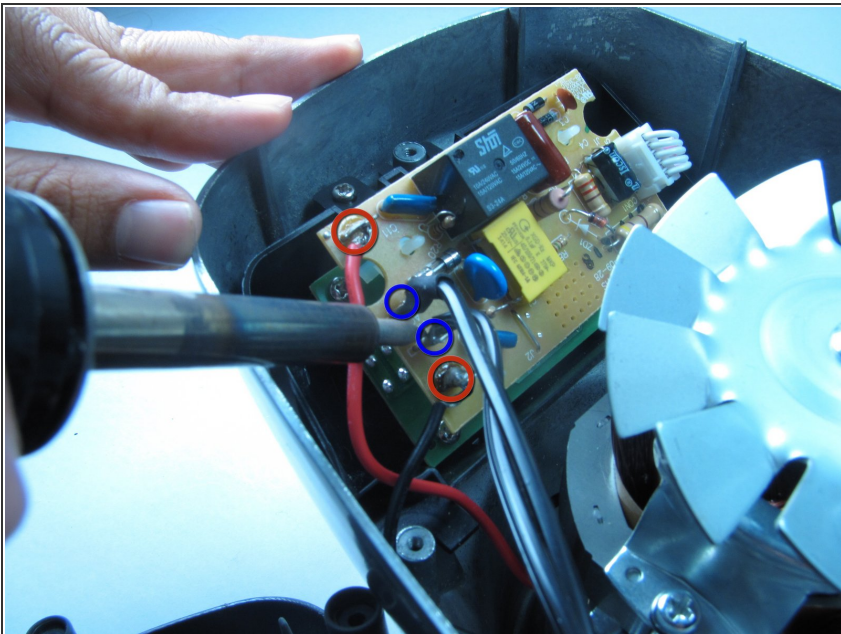
- Once you have the base removed, the circuit board should be clearly visible inside.

Step 7



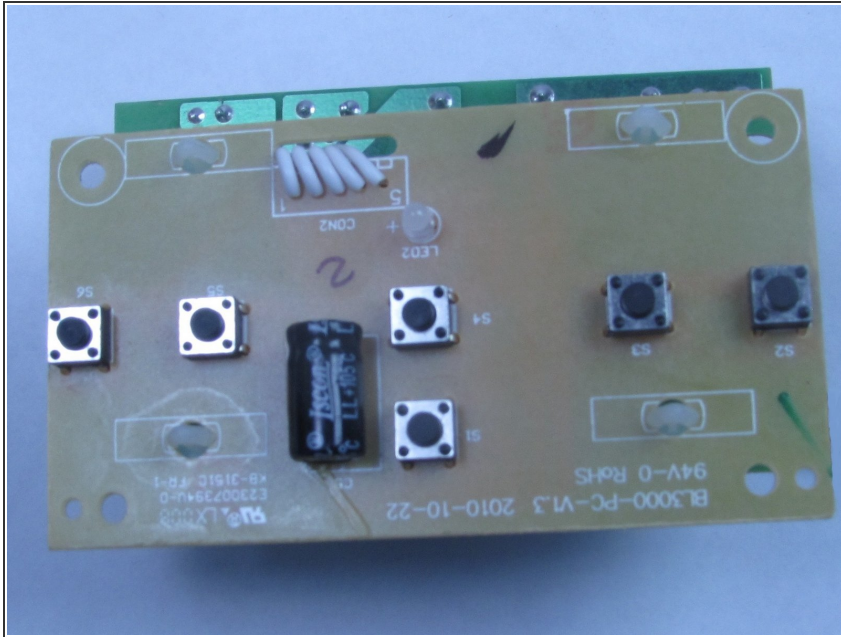
- Remove the four screws located on the circuit board.
 - Two are on the left side.
 - Two are on the right side.

Step 8



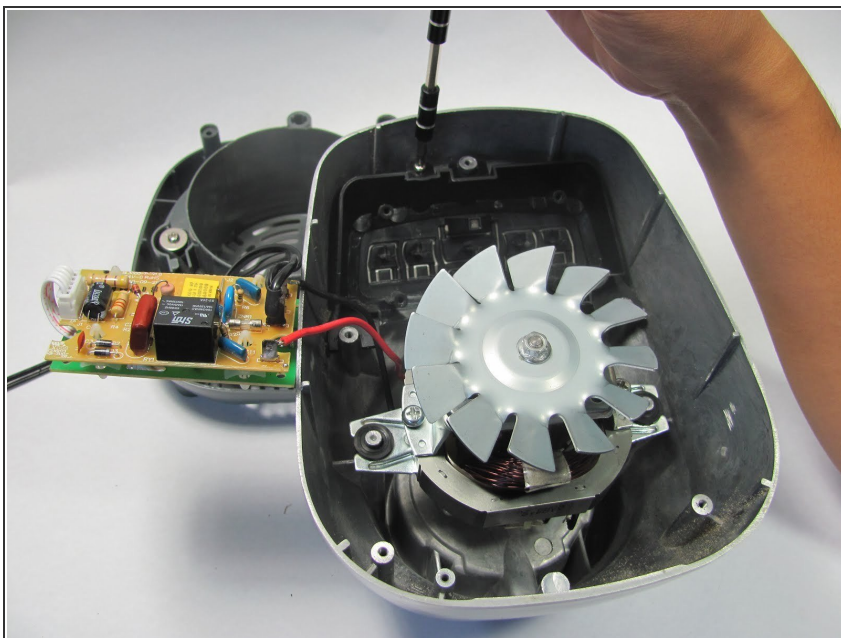
- Remove the following soldered connections with a soldering iron:
 - Motor wires
 - Power cord wires

Step 9



- Lift the circuit board straight up to remove it from the base.

Step 10 — Buttons



- Once the circuit board has been freed from its screws it can be moved out of the way to gain access to the buttons.
- A single screw must be removed from the top as shown.

Step 11




- Push firmly from the outside of the blender on the face of the buttons to pop it out of its locked position.

Step 12



- Provided is a front and a back view of a functioning button frame from the BL3000S.

 Check for cracks, bends, debris, or missing extensions and fastens.

To reassemble your device, follow these instructions in reverse order.