



# Black and Decker Dustbuster CHV1410 Power Switch Replacement

Power switch replacement of a dustbuster.

Written By: Ivette Muzquiz



## INTRODUCTION

. Sometimes the power switch can become jammed or broken. This guide will show how to take the housing apart and replace the power switch within the black and decker dustbuster. One thing to be aware of would be that the screws are deep within the outside of the housing so an extender could be needed to reach the screws



### TOOLS:

- [Phillips #0 Screwdriver](#) (1)
  - [4mm Hex Socket](#) (1)
-

## Step 1 — Power Switch



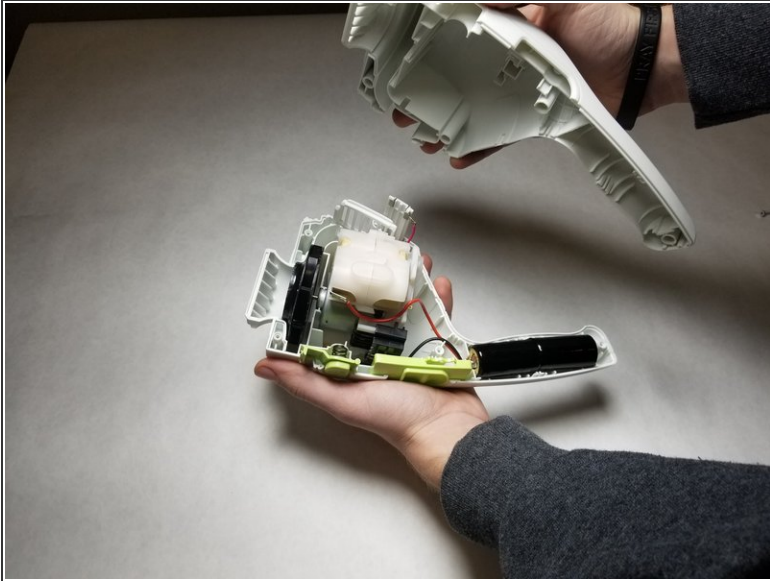
- To remove the filter and housing, press the green button labeled "Filter".

## Step 2



- Unscrew and remove all 5 screws using the Phillips 0 screw bit. Each screw is 17.5 mm long.

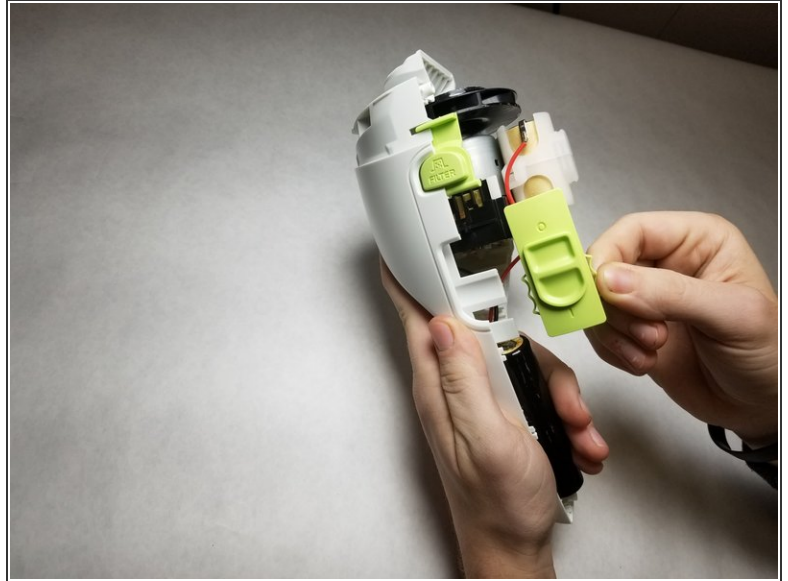
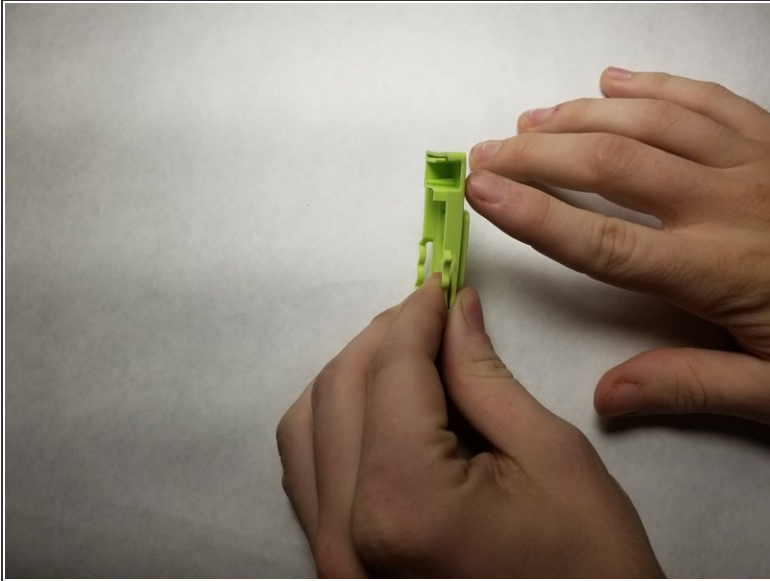
## Step 3



- Pull the housing apart.
- ⓘ When you pull the housing apart, pieces may fall out. Be sure to track of the parts and where they go.
- Remove the switch by pulling it out.



## Step 4



- ✦ Replace the new switch by sliding the replacement switch onto the top of the switch mechanism located on the motor.

To reassemble your device, follow these instructions in reverse order.