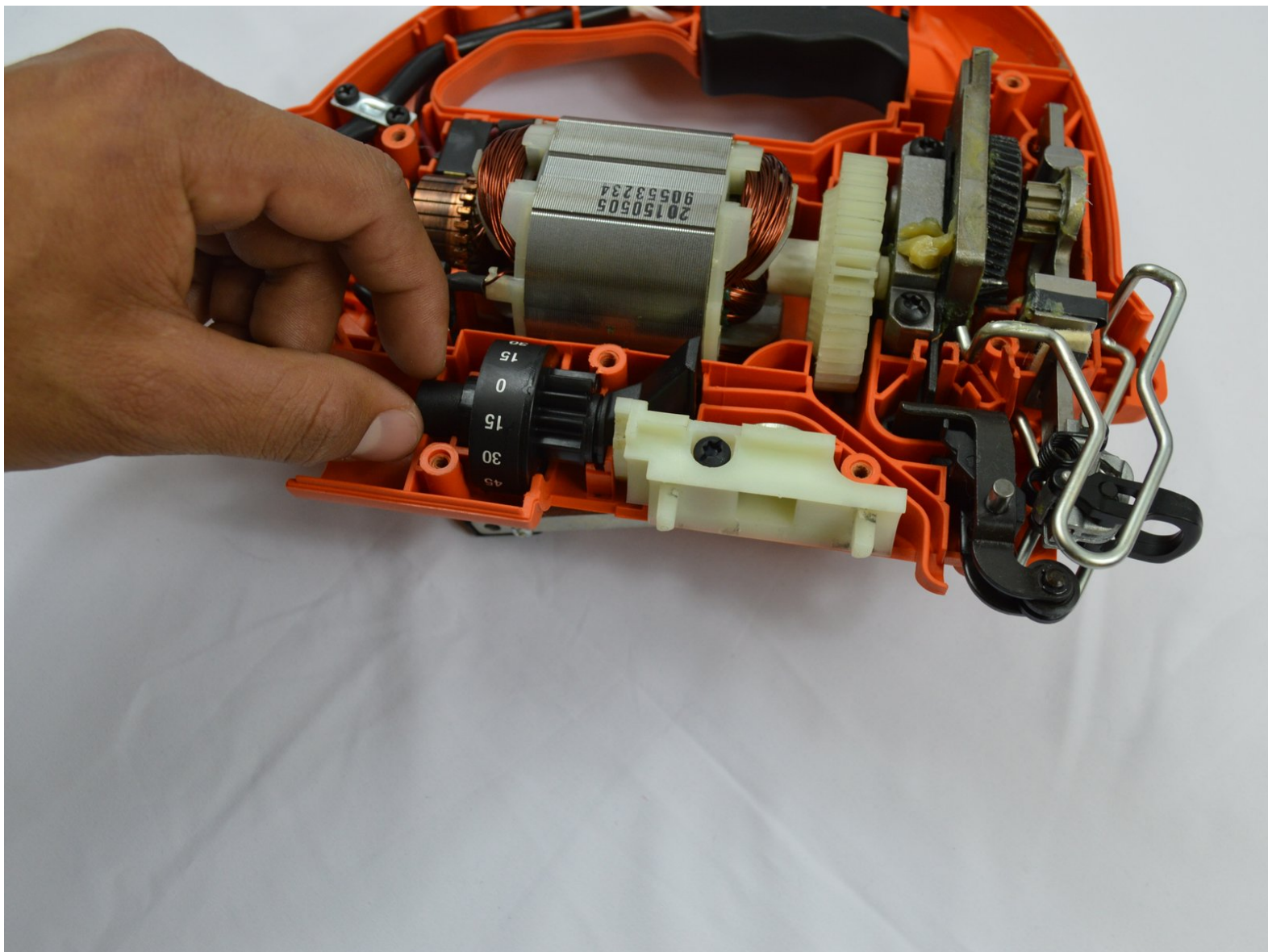




# Black and Decker JS660 Angle Knob Replacement

The angle is set to a certain degree but not cutting at the selected angle. It needs to be replaced.

Written By: Andrew Khouri



---

## INTRODUCTION

This guide will give users a step by step on how to replace the angle indication knob on the jigsaw. You will need to by the replacement parts from the link given in the details.



### TOOLS:

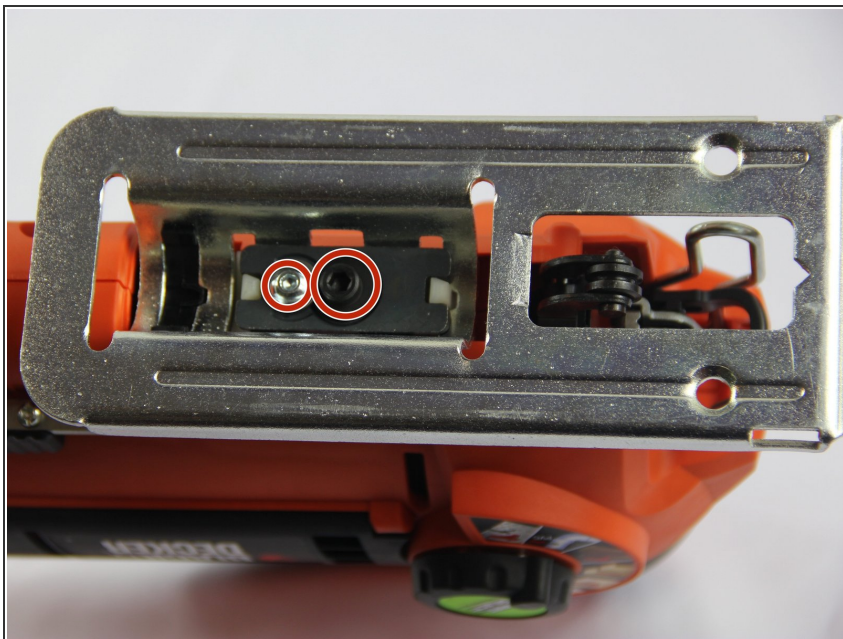
- [Screwdriver](#) (1)
-

## Step 1 — Base



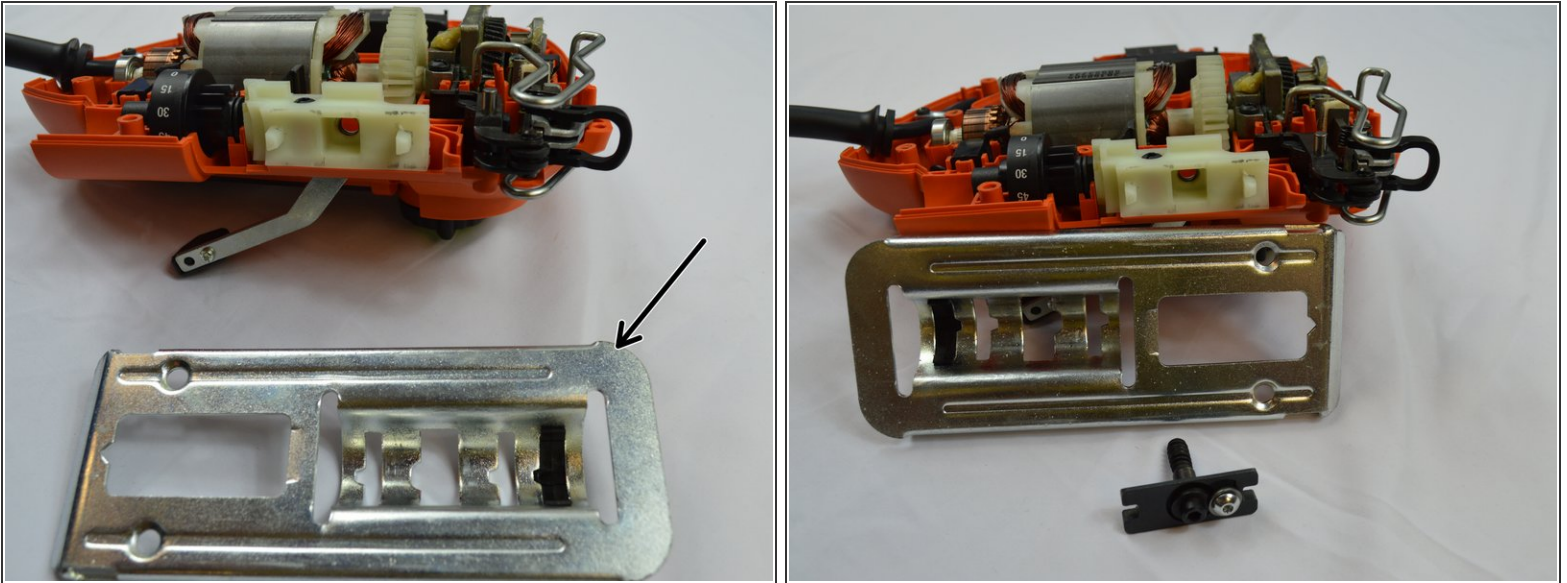
- Unscrew the nine screws to open up the jigsaw

## Step 2



- Unscrew the base by unscrewing the two shown in the picture.

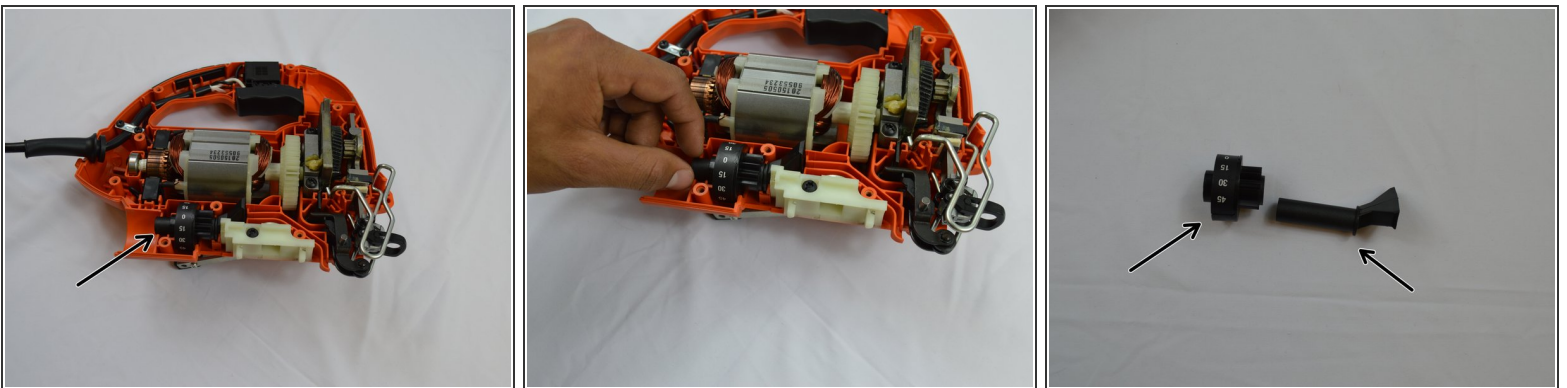
### Step 3



- The Jigsaw base will now be off. With the new base simply do the reverse order of steps.

**i** Assemble the base on a steady surface.

### Step 4 — Angle Knob



- As soon you disassemble the device, you can see the angel knob is not attached to any screws.
- You can easily pick it up and replace it.

**i** [replacment](#)

To reassemble your device, follow these instructions in reverse order.

This document was generated on 2019-10-02 03:11:12 PM (MST).

