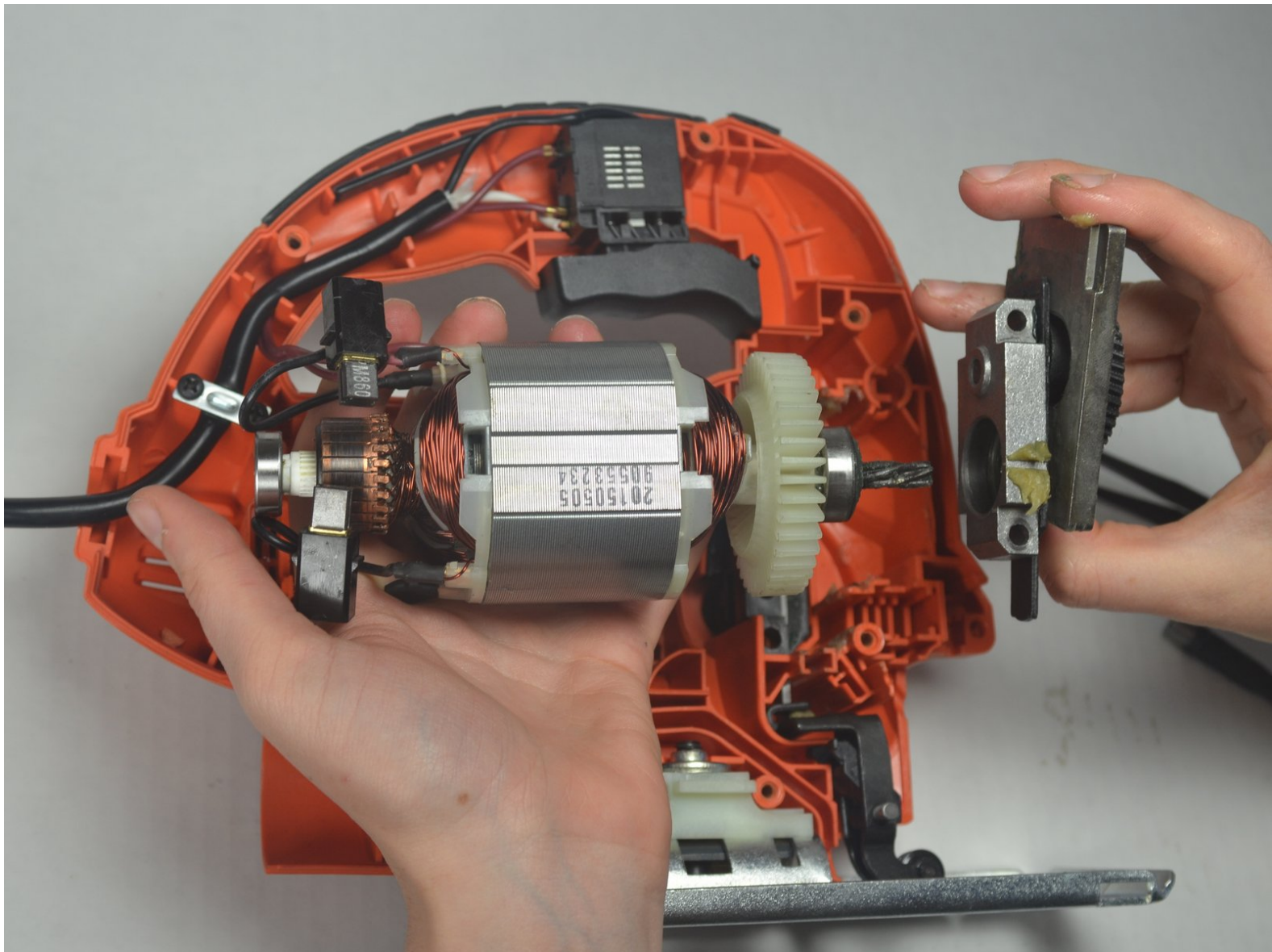




# Black and Decker JS660 Gear Box Replacement

The metal gearbox may come loose or break. This guide will step through how to disassemble the device and remove the gearbox.

Written By: matt murray



## INTRODUCTION

This guide will teach the user to replace the gearbox. The gearbox is what converts the energy of the motor into the cutting power of the saw. It looks to be hard to replace because there are many stacked metal plates covered in grease, but there is a central pin that keeps it all together. Sometimes the only fix needed is to add more grease to the gearbox.



### TOOLS:

- [T20 Torx Screwdriver](#) (1)
- [T15 Torx Screwdriver](#) (1)
- [Tweezers](#) (1)



### PARTS:

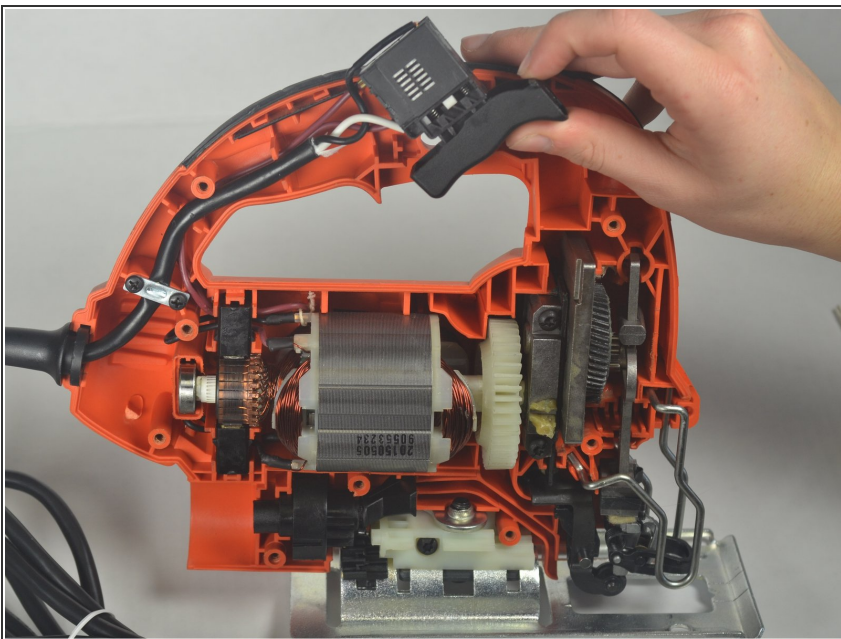
- [Blade Holder](#) (1)

## Step 1 — Housing Disassembly



- Remove the nine torx 15.875mm screws on the front of the jigsaw using a T-15 torx screwdriver.

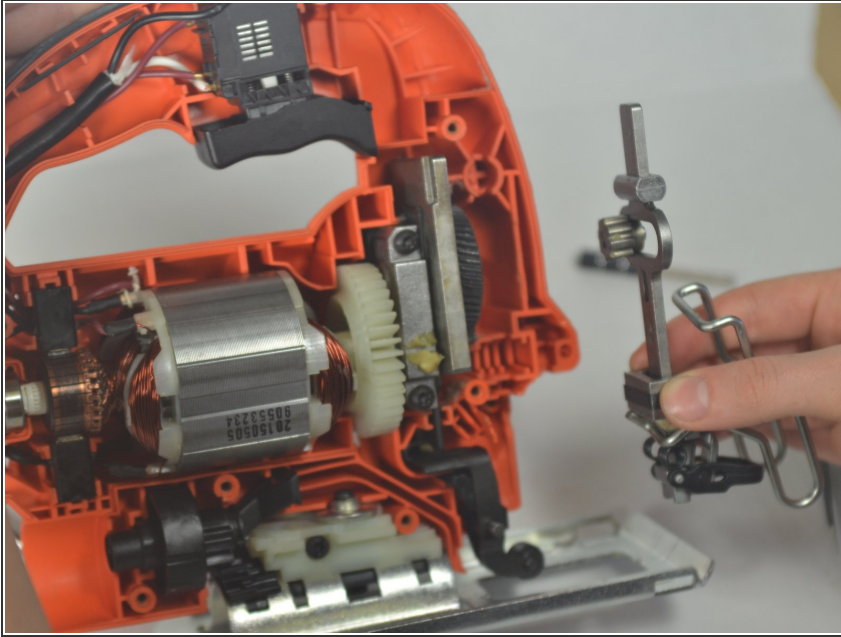
## Step 2



- By separating the two housing halves, carefully remove the top plate.

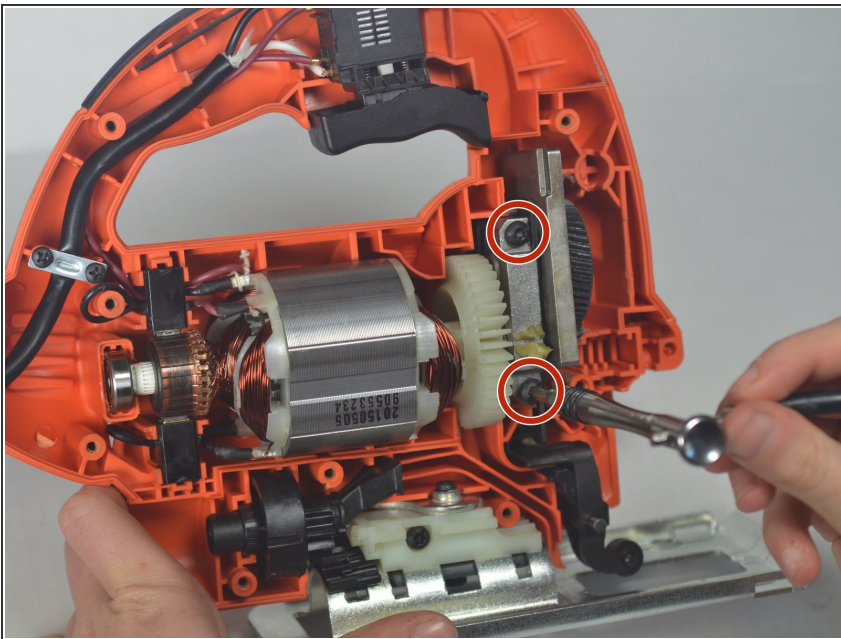


### Step 3 — Blade Holder



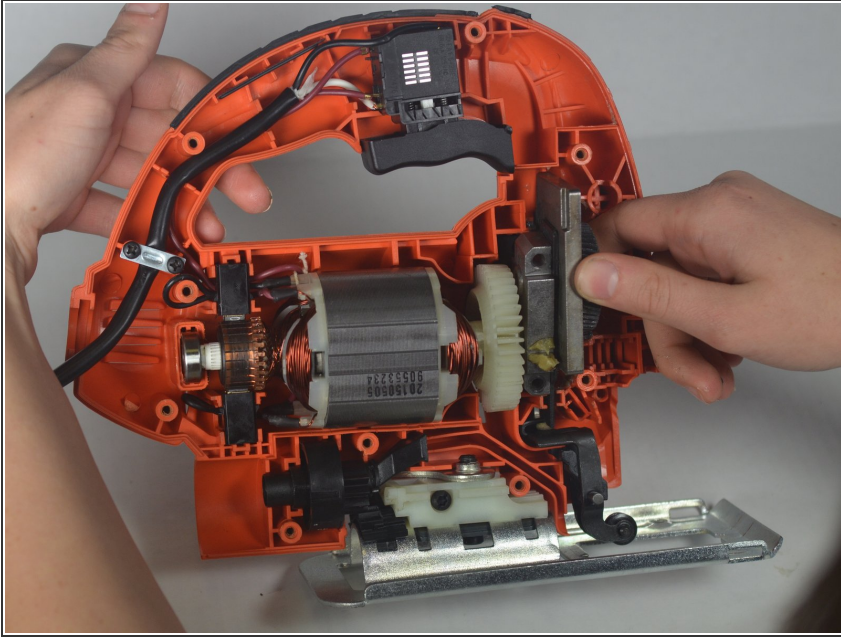
- Being careful to keep all parts together, grab the entire assembly and pull it directly out of the saw.

### Step 4 — Motor



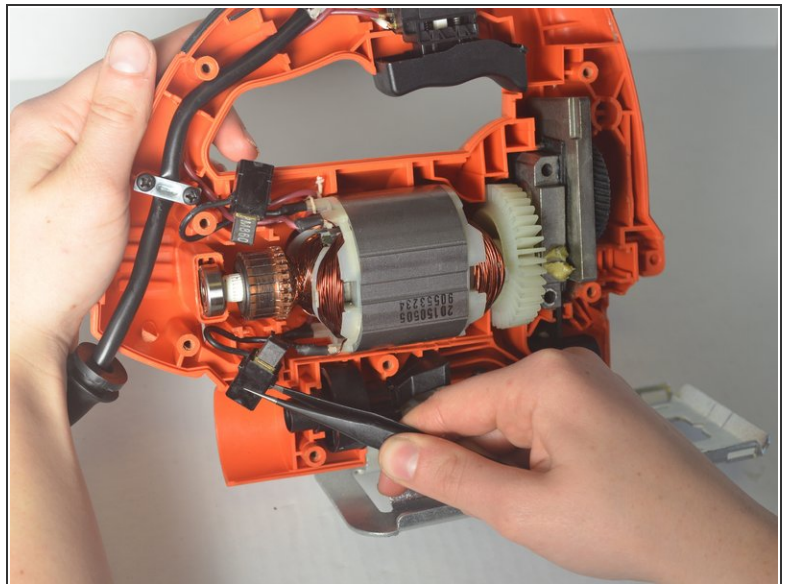
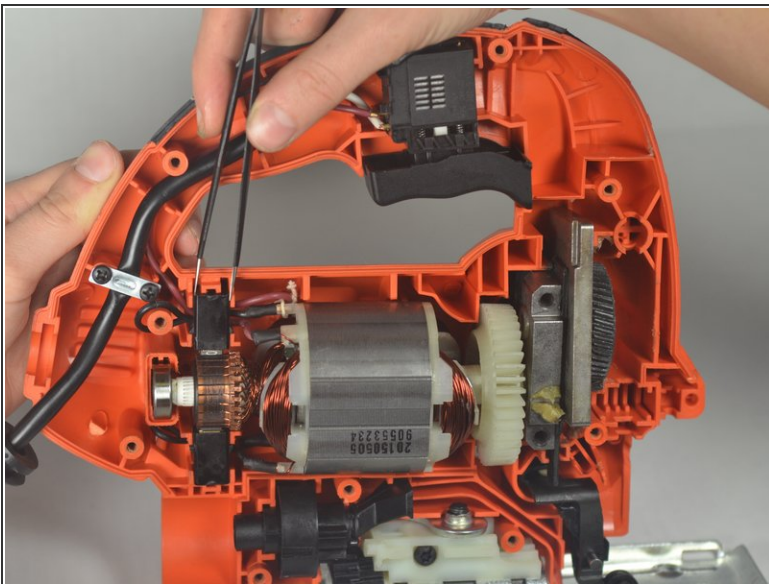
- Remove the two 30.1625mm screws with a T20 torx screwdriver that are holding the gearbox to the housing.

## Step 5



- Apply a light force to separate the gearbox from the housing. This will momentarily separate the gearbox and help with the removal of the system in later steps.

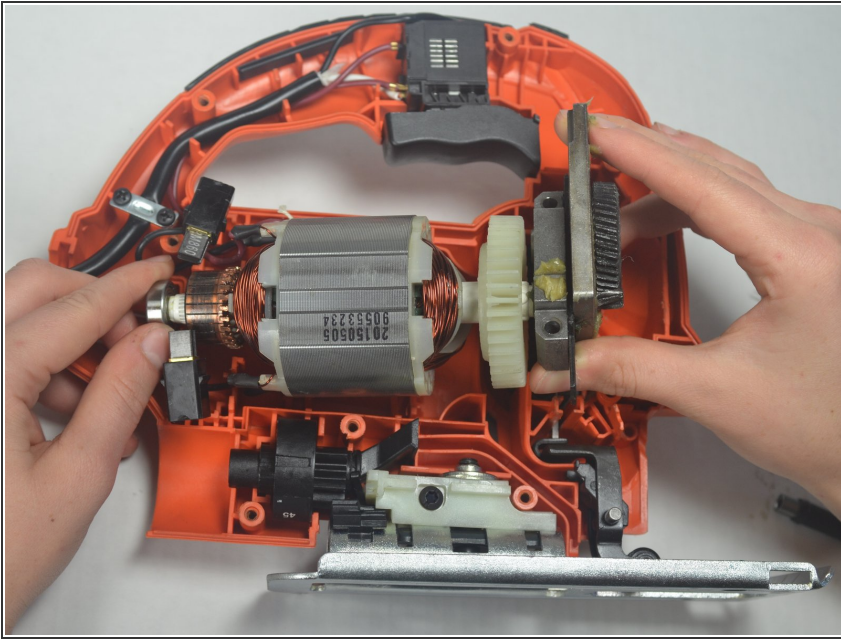
## Step 6



- Using tweezers or a small flathead screwdriver, gently remove each of the black magnetic clasps away from the motor.

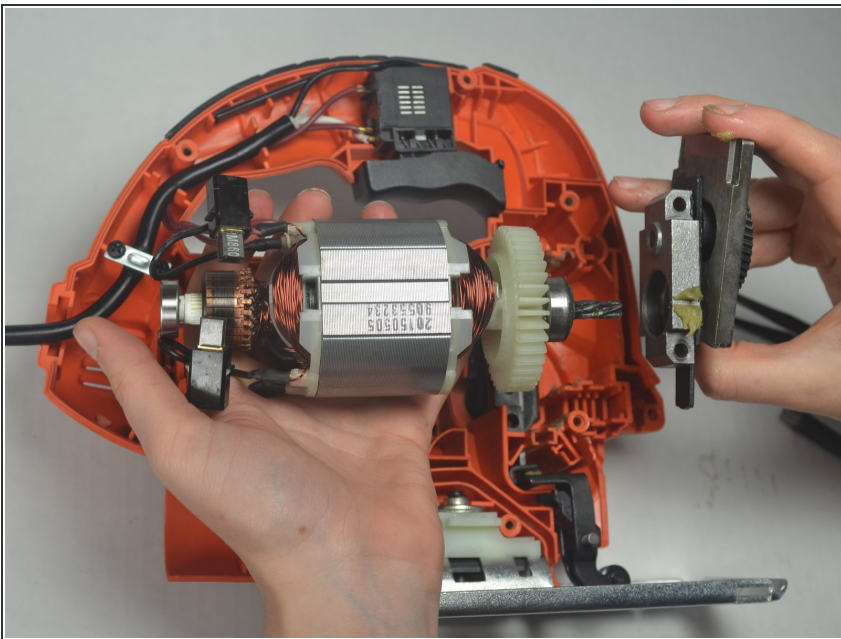


## Step 7



- Holding the gearbox and the bearing, pull the whole motor and gearbox out of the housing.

## Step 8



- While holding the motor in one hand, gently pull the gearbox off of the drive shaft.

To reassemble your device, follow these instructions in reverse order.