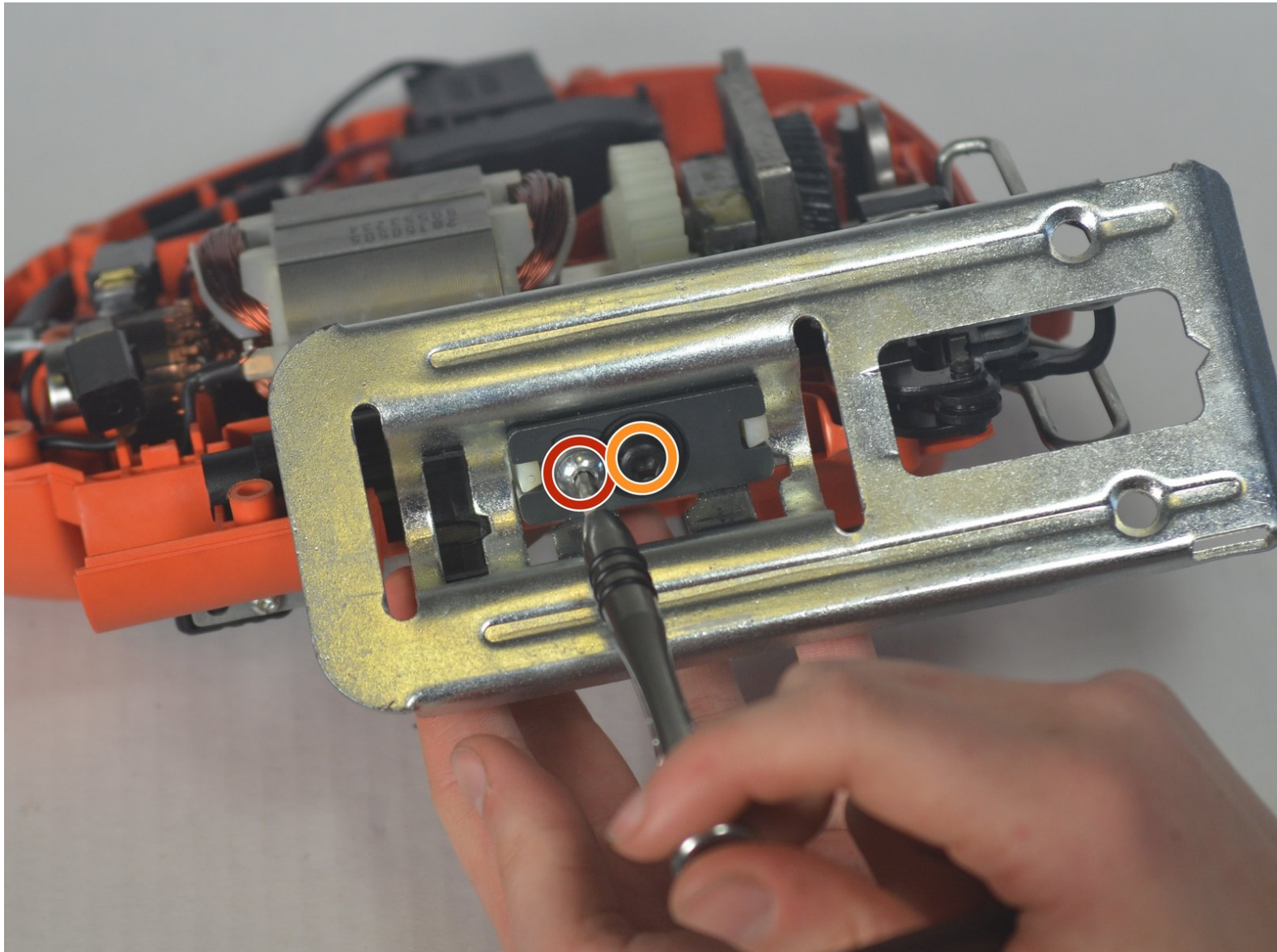




Black and Decker JS660 Shoe Plate Replacement

In this guide you will learn how to easily remove and replace the shoe plate of the saw.

Written By: matt murray



INTRODUCTION

If the saw has a broken shoe plate, this guide will show you how to replace it. It is simply two screws that must be removed in order to remove the entire plate.



TOOLS:

- [T15 Torx Screwdriver](#) (1)
- [H.30 Hex Screwdriver](#) (1)
- [H.40 Hex Screwdriver](#) (1)



PARTS:

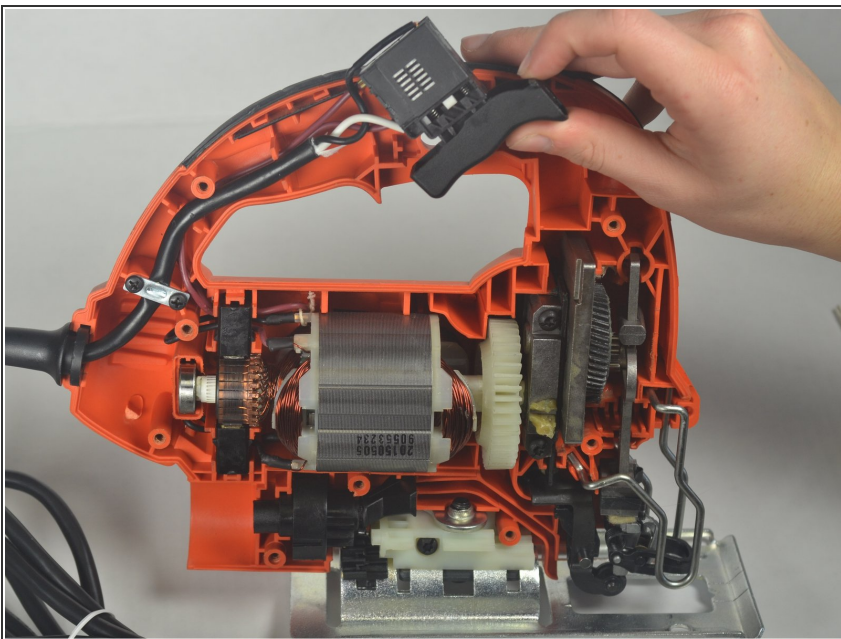
- [Shoe Assembly](#) (1)

Step 1 — Housing Disassembly



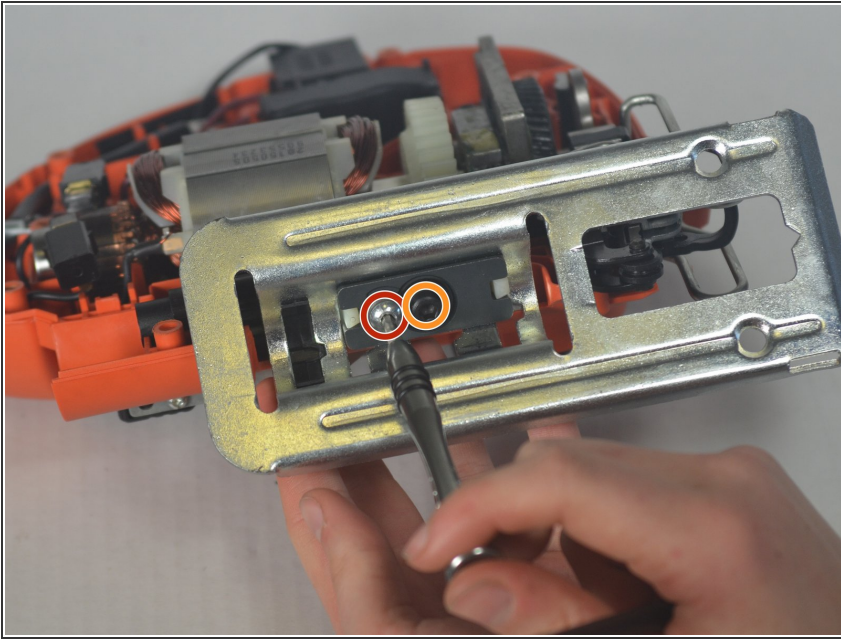
- Remove the nine torx 15.875mm screws on the front of the jigsaw using a T-15 torx screwdriver.

Step 2



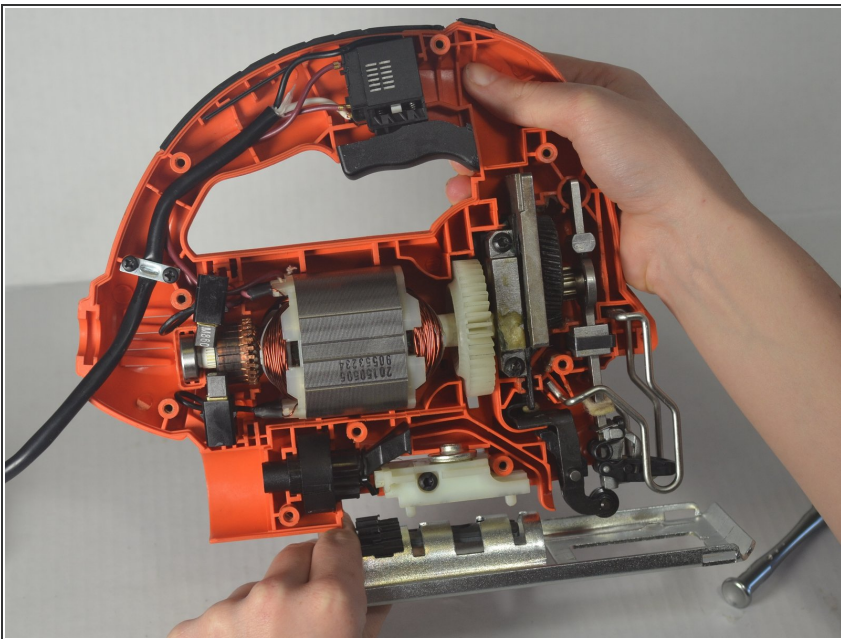
- By separating the two housing halves, carefully remove the top plate.

Step 3 — Shoe Plate



- Remove the 6.3mm hex screw on the left with a H.30 hex screwdriver.
- Remove the reverse threaded 6.9mm black hex screw on the right with a H.40 hex screwdriver.

Step 4



- Simply remove the shoe plate by pulling it down and out.

To reassemble your device, follow these instructions in reverse order.