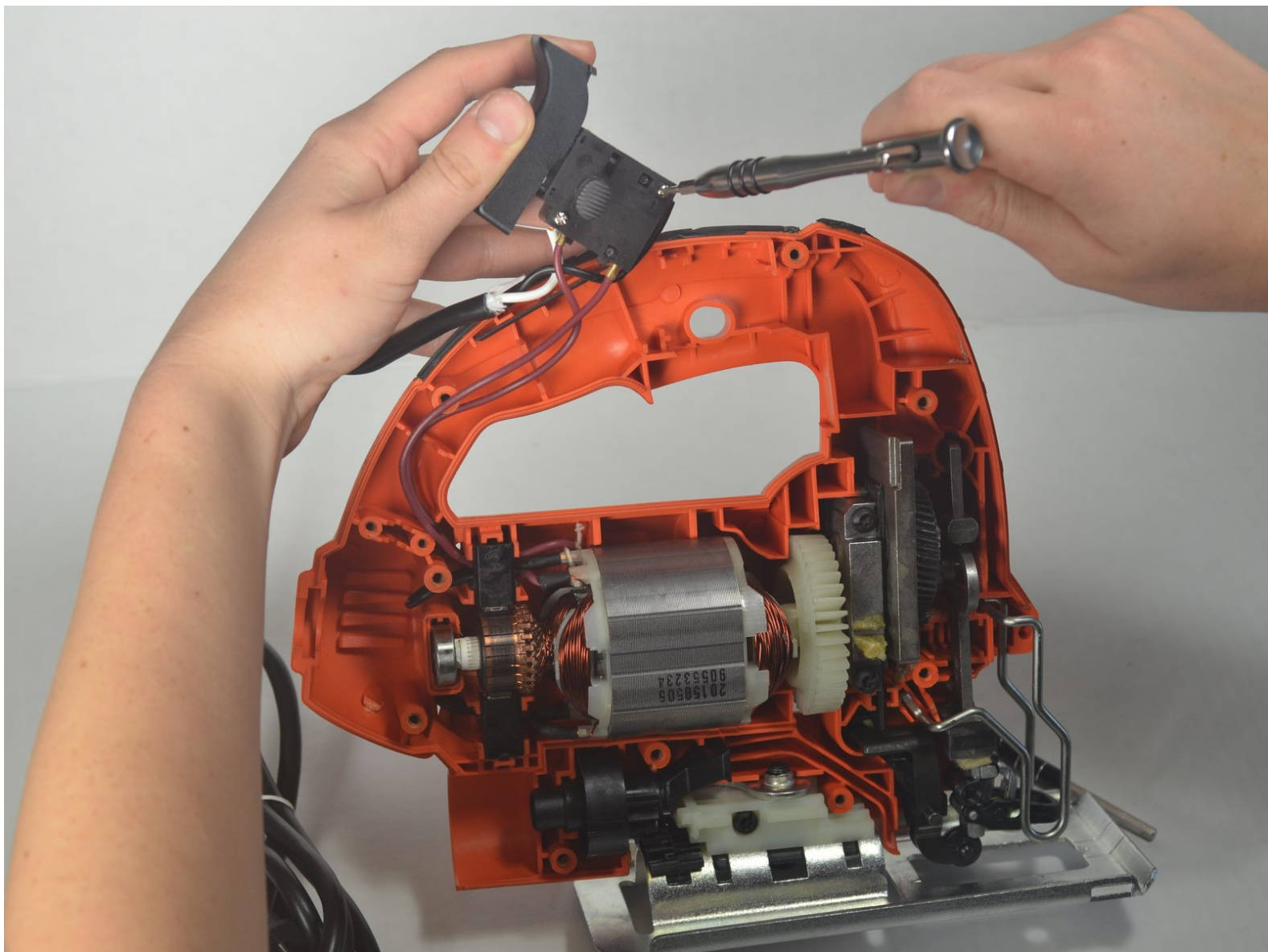




Black and Decker JS660 Trigger Replacement

If your JS660 jig saw does not work, then your trigger may be the problem. below you can learn how to replace it.

Written By: matt murray



INTRODUCTION

This guide will teach the user to replace the trigger of the saw. The trigger replacement is the most electrically connected part in the saw. Before replacing the whole trigger check to make sure all the leads are properly attached. If that does not solve the issue, then proceed with the replacement of the trigger.



TOOLS:

- [T15 Torx Screwdriver](#) (1)
- [Phillips #2 Screwdriver](#) (1)
- [Flathead 3/32" or 2.5 mm Screwdriver](#) (1)
- [Small Needle Nose Pliers](#) (1)



PARTS:

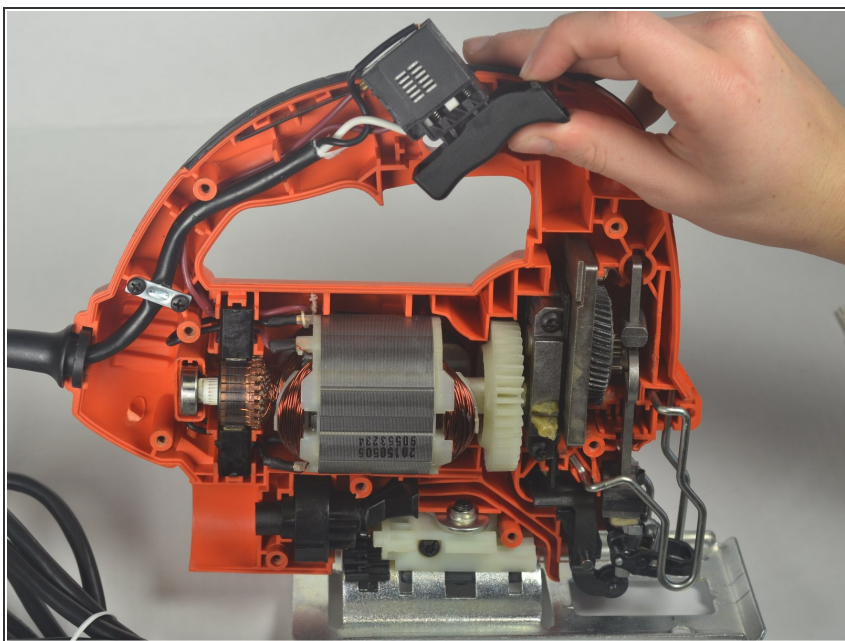
- [JS660 Switch](#) (1)

Step 1 — Housing Disassembly



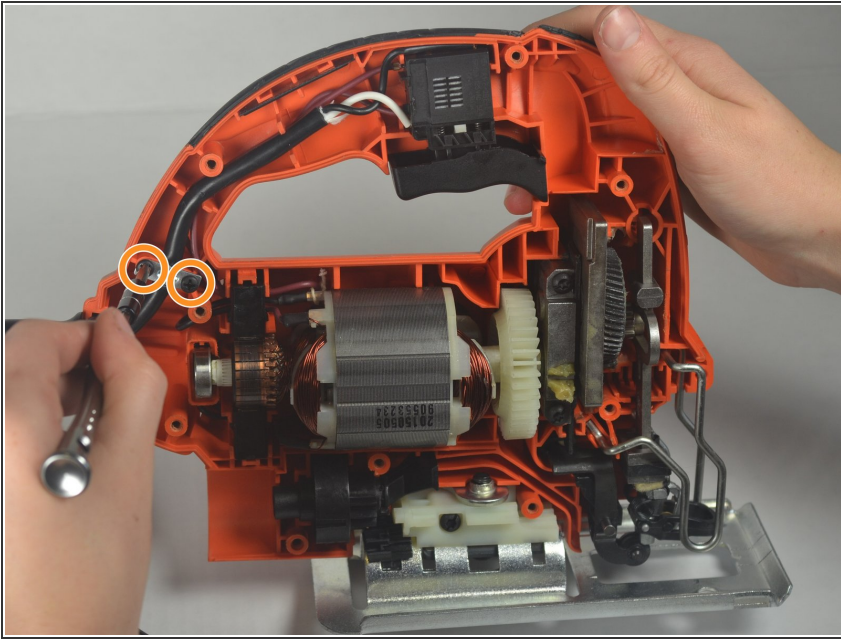
- Remove the nine torx 15.875mm screws on the front of the jigsaw using a T-15 torx screwdriver.

Step 2



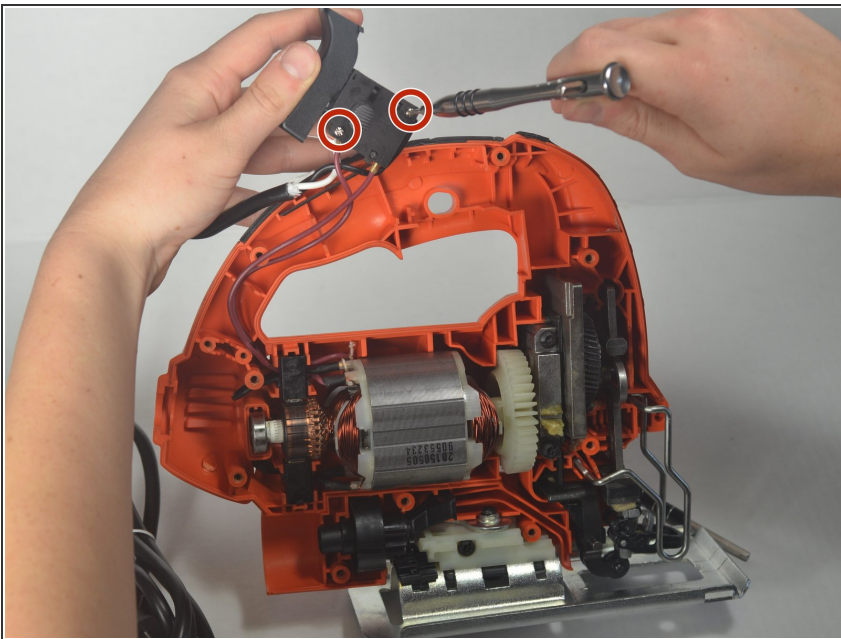
- By separating the two housing halves, carefully remove the top plate.

Step 3 — Power Cord



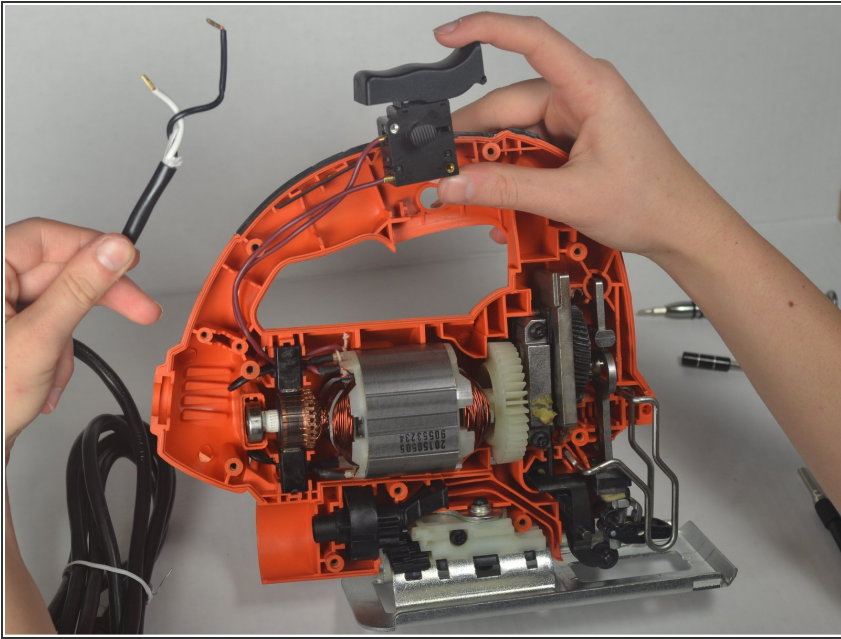
- Remove the two 12.7mm phillips head screws holding the power cord in place with a PH2 Phillips head screwdriver.

Step 4



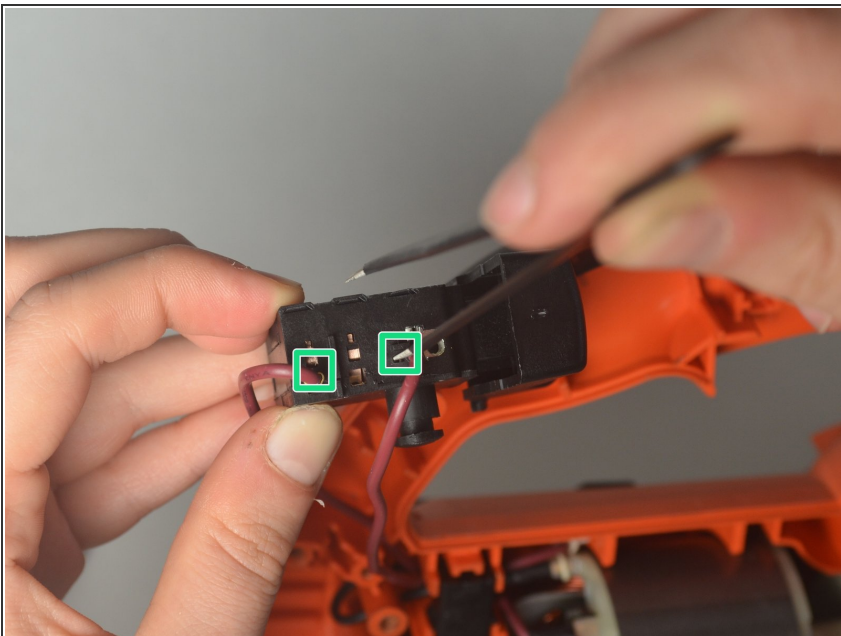
- Remove the two 6.35mm flat head screws on the trigger with a 2.5 flat head screwdriver to disconnect the white and black cords.

Step 5



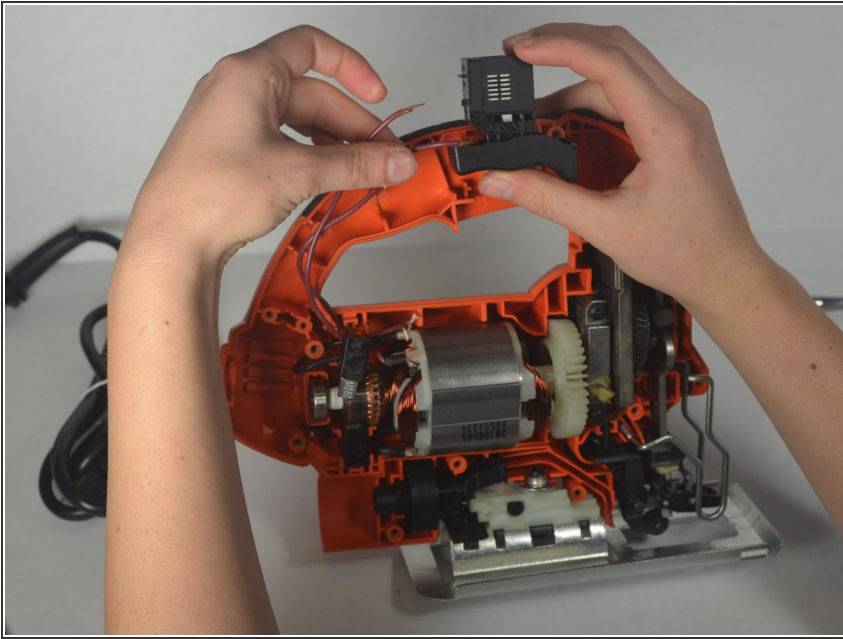
- Gently remove the black and white cord from the trigger assembly.

Step 6 — Trigger



- Use tweezers to press down on these tabs on the trigger assembly.
- While the tab is depressed, the cord can be pulled out of the housing by using a moderate amount of force.
- Each cord needs to be done separately.

Step 7



- Remove pink wires from trigger assembly.

To reassemble your device, follow these instructions in reverse order.