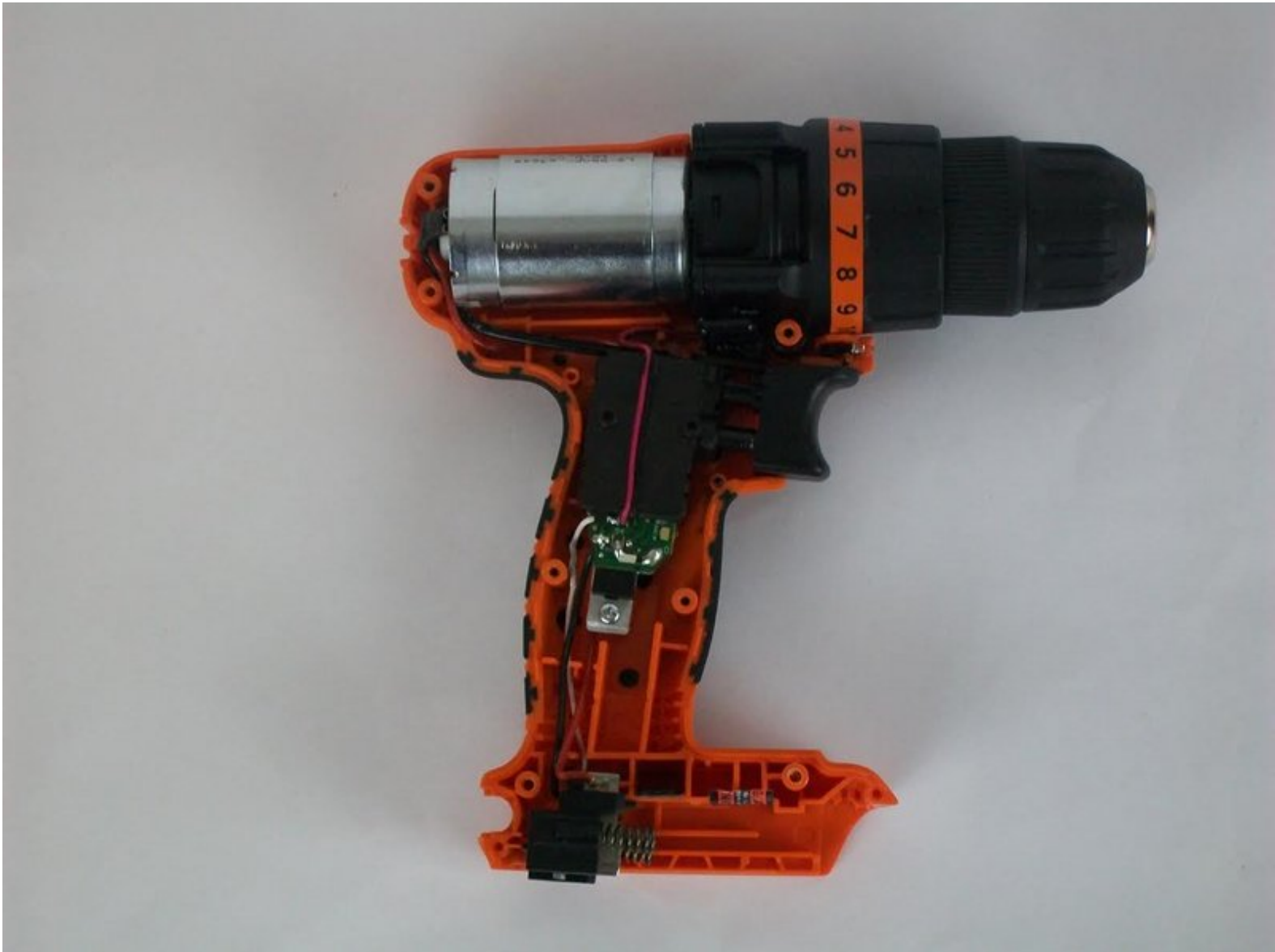




# Black and Decker LDX 120C Chuck Replacement

This guide will demonstrate how to unjam the chuck by following a step by step process.

Written By: jeffrey zakka



---

## INTRODUCTION

If the chuck is jammed or not tightening up; the guide will illustrate a step by step process to help solve the problem.

---



### TOOLS:

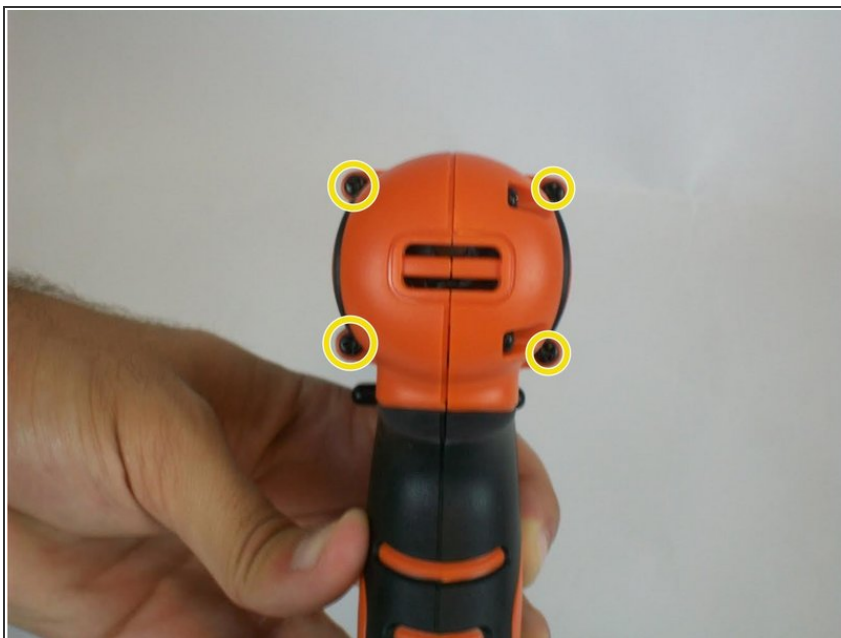
- [Phillips #1 Screwdriver](#) (1)
  - [iFixit Pro Tech Toolkit](#) (1)
-

## Step 1 — Outer Case



- For this guide we will need to use a 1.0 mm phillips #1 screw.
- There are a total of thirteen screws that need to be removed in order to open the drill and access the interior components.

## Step 2



- Remove the four screws on the back top side of the drill.

### Step 3



- Remove the four screws that connect the chuck to the drill.

### Step 4



- Remove the five screws on the front side of the drill.

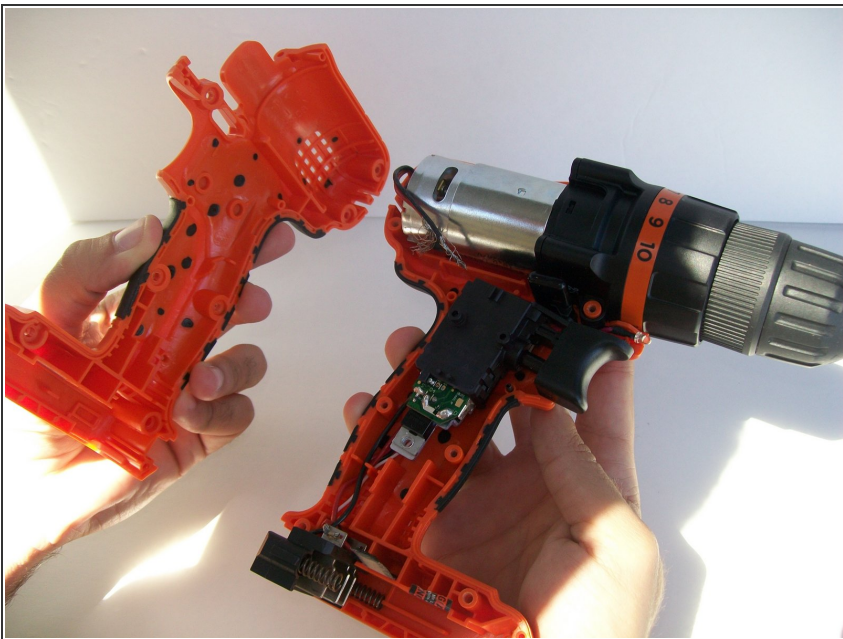


## Step 5



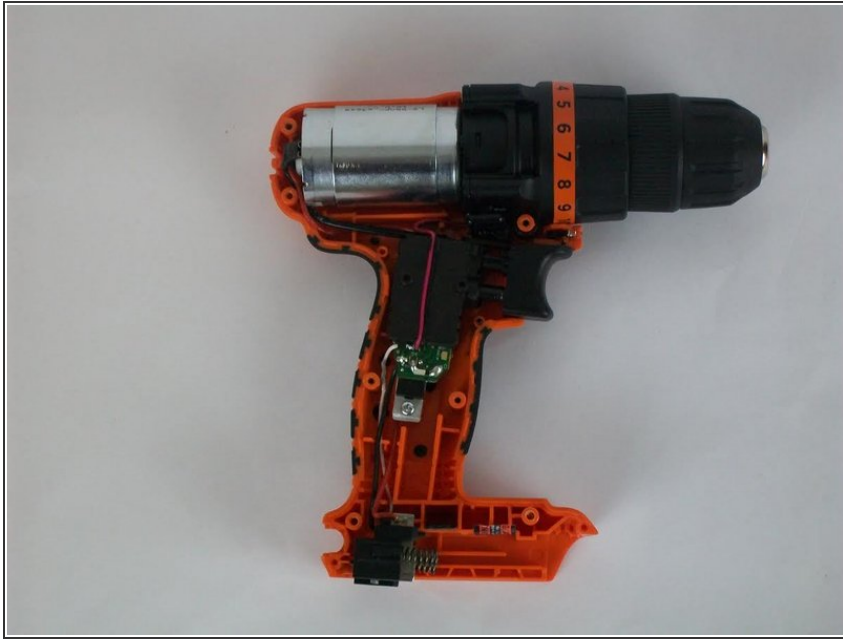
- Gently grab both sides of the drill casing, and separate both sides from each other.

## Step 6



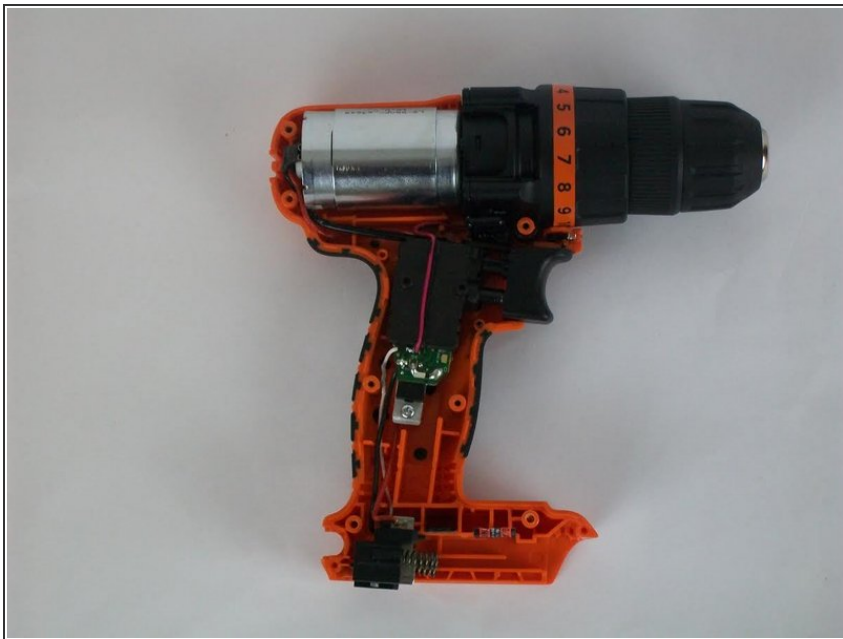
- At this point you should be able to separate both as illustrated.

## Step 7



- Now all the components of the drill are visible and can be accessed.

## Step 8 — Chuck



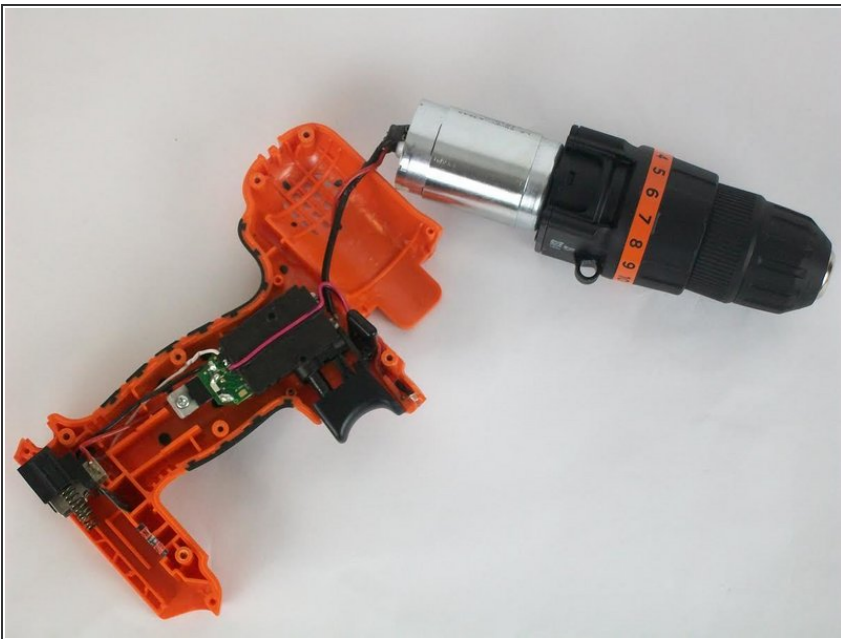
- After following the prerequisite, the drill is now open.
- The interior components can now be accessed.

## Step 9



- Separate the top part(the chuck and motor) from the rest of the drill.

## Step 10



- ⓘ While separating the top from the rest, do this carefully without over stretching the wires so that no connection is damaged.



## Step 11



- To remove the motor simply twist as illustrated in the picture.

## Step 12



- The three metal tips in the front are the ones that are controlled by the chuck to hold and release the screw.



## Step 13



- To test the chuck twist the head as shown in the illustration.
- If the three metal tips don't move upon twisting then the chuck isn't working effectively and will need to be replaced since the inside of the chuck can't be accessed.

To reassemble your device, follow these instructions in reverse order.