



# Black and Decker LDX 120C Outer Case Replacement

This guide is a prerequisite to the other guides. It shows how to open up the drill in order to reach the interior components.

Written By: jeffrey zakka



03/01/2016

# INTRODUCTION

To be able to get into the components inside the drill we will have to open the drill by undoing thirteen total screws, and this guide will illustrate this.



## TOOLS:

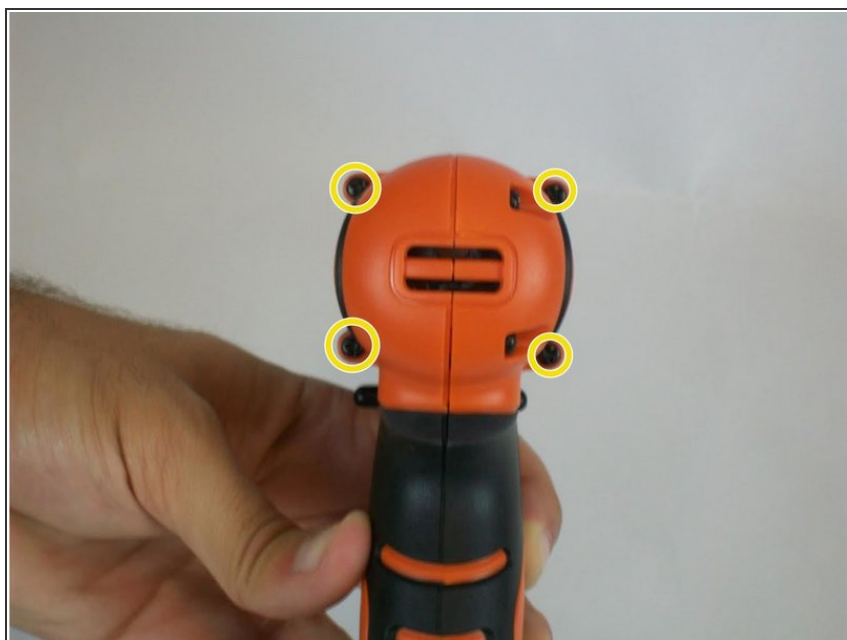
- [iFixit Pro Tech Toolkit](#) (1)
  - [Phillips #1 Screwdriver](#) (1)
-

## Step 1 — Outer Case



- For this guide we will need to use a 1.0 mm phillips #1 screw.
- There are a total of thirteen screws that need to be removed in order to open the drill and access the interior components.

## Step 2



- Remove the four screws on the back top side of the drill.

### Step 3



- Remove the four screws that connect the chuck to the drill.

### Step 4



- Remove the five screws on the front side of the drill.

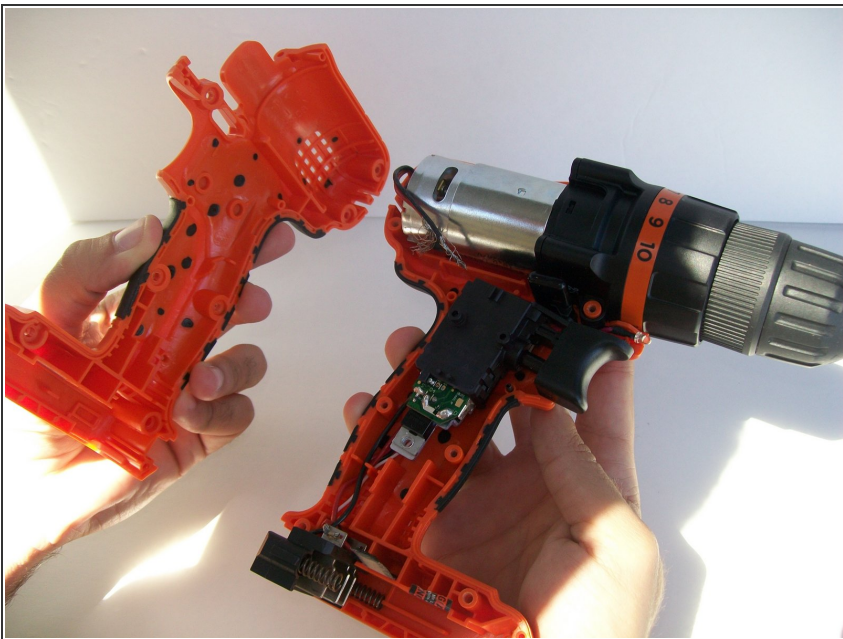


## Step 5



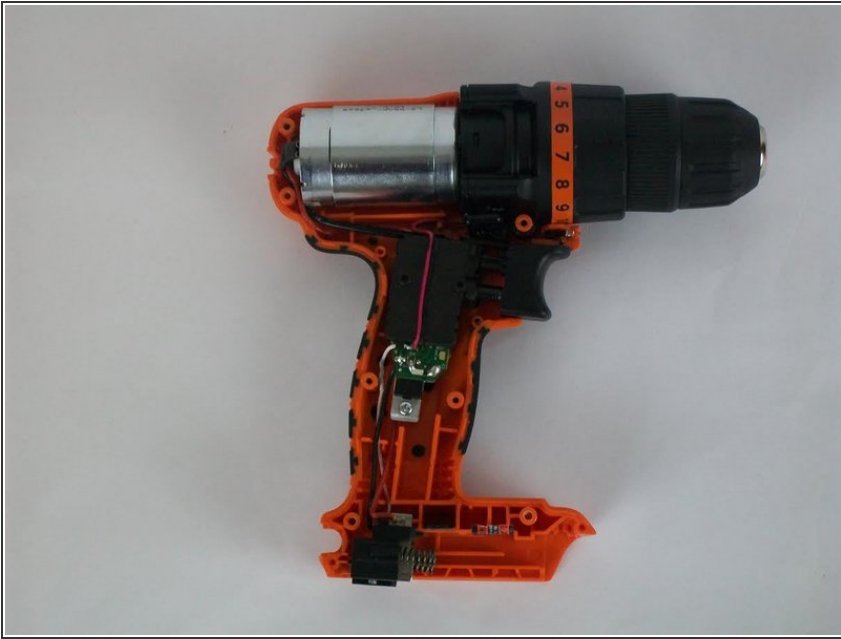
- Gently grab both sides of the drill casing, and separate both sides from each other.

## Step 6



- At this point you should be able to separate both as illustrated.

## Step 7



- Now all the components of the drill are visible and can be accessed.

To reassemble your device, follow these instructions in reverse order.