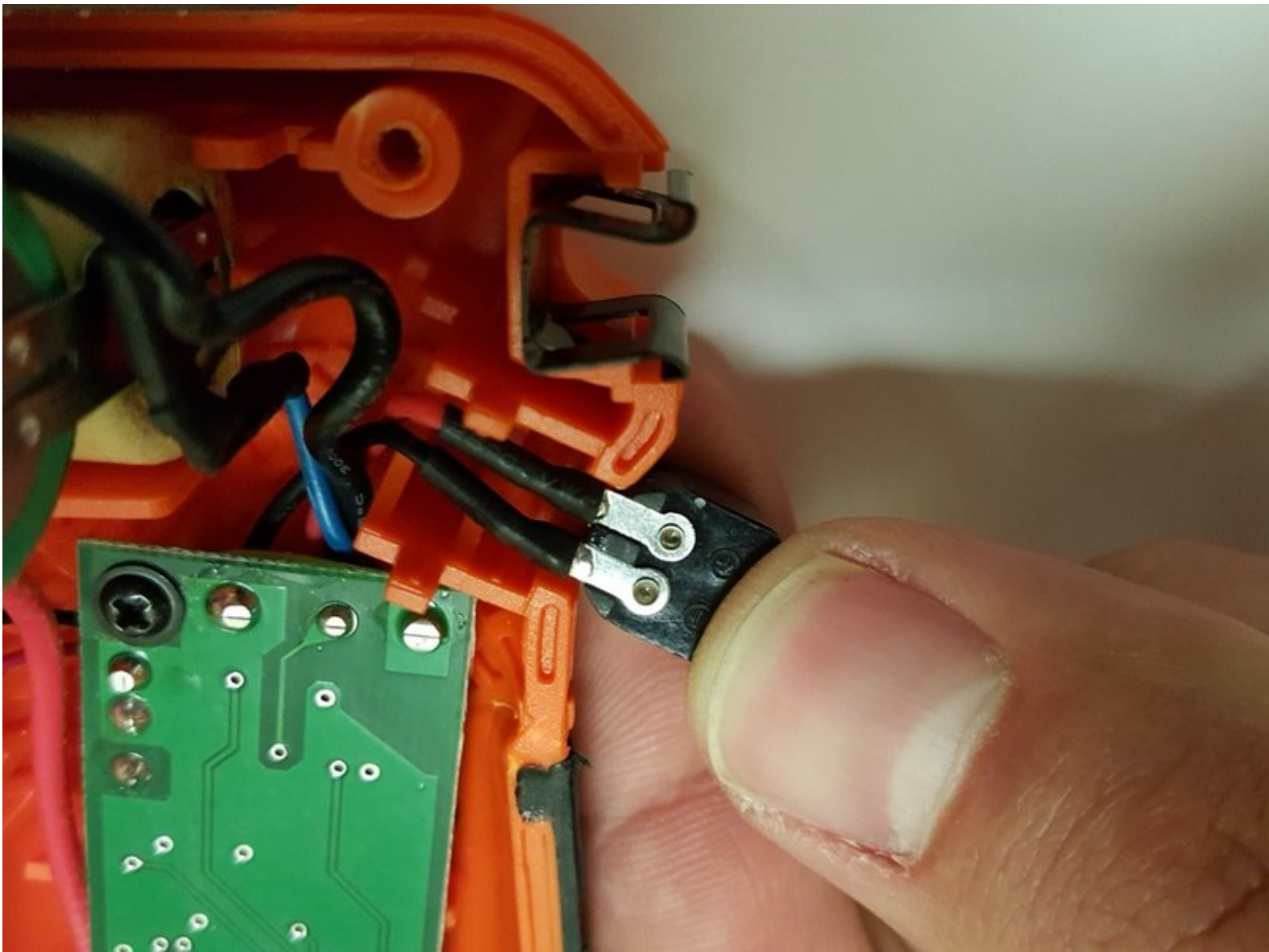




Black and Decker LDX172C Battery Charge Port Replacement

This guide will give you the steps to replace the battery charging port on the Black and Decker LDX172C cordless drill.

Written By: Eric Miessen



This document was generated on 2019-10-02 03:20:15 PM (MST).

INTRODUCTION

If the battery fails to charge on the Black and Decker model LDX172C cordless drill, it is likely that the charge port may be defective. The charge port can be replaced relatively easily in approximately 40 minutes with only basic tools, such as a phillips screwdriver set and a basic soldering iron. This guide will outline the steps necessary to complete the replacement.

TOOLS:

- [Soldering Iron](#) (1)
 - [Phillips #2 Screwdriver](#) (1)
-

Step 1 — Battery Charge Port



- ⚠ Before beginning, make sure the motor direction switch is in the neutral position.
- Place the drill on the work surface with the chuck facing downward. Locate and remove the two #2 X 10mm Phillips screws located right of the motor.

Step 2



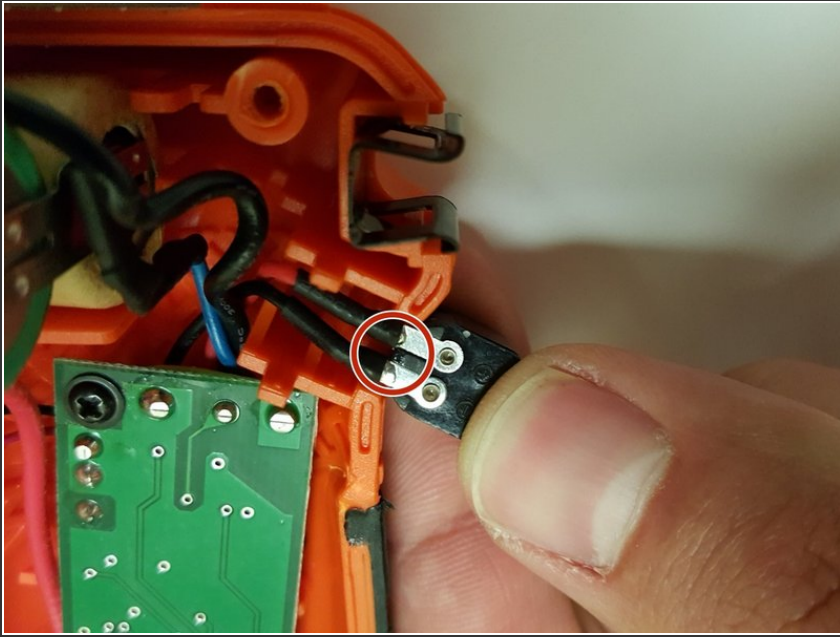
- Rotate the drill to its left side - the chuck should be facing to the right. Locate and remove the eight #2 X 5mm Phillips fasteners from the body of the drill.


Step 3



- Carefully remove the right half of the body from the drill.
- ⓘ The trigger mechanism is spring loaded and may eject from the drill when the body is removed.
- Locate the battery charging port in the base of the drill.

Step 4



 Remember that the battery may still have a charge. To avoid electrical shock, it is a good idea to disconnect the battery before modifying any connections on the charging port. You can find how to disconnect the battery [here](#)

- Remove the soldered wire connections as marked.
- Re-solder the wire connections to the new charge port and insert the charge port back into its proper location.
- Repeat steps in reverse to reassemble.

To reassemble your device, follow these instructions in reverse order.