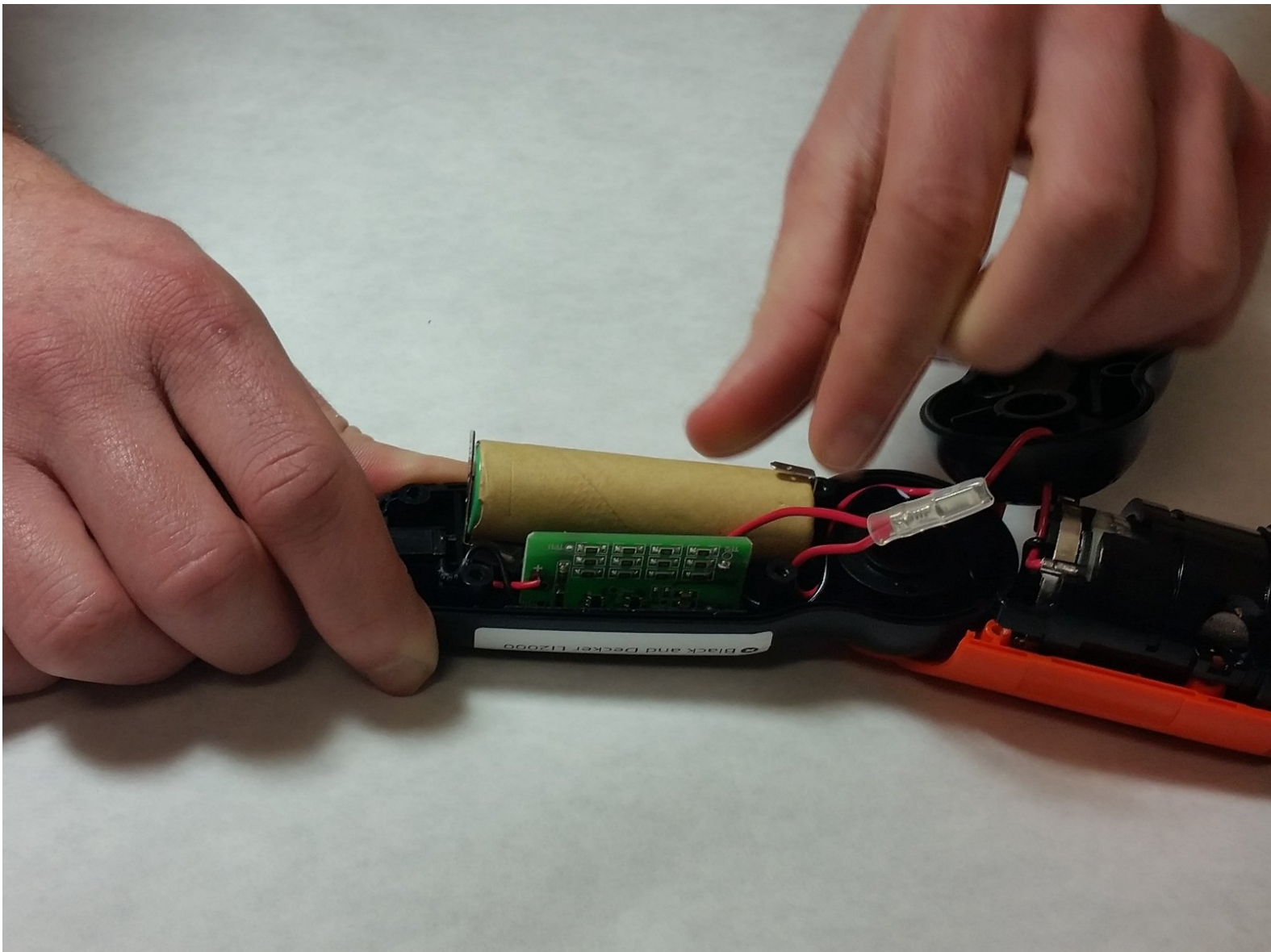




# Black and Decker LI2000 Battery Replacement

In this guide we will replace the battery.

Written By: Katherine Simmons



# INTRODUCTION

Use this guide to remove or replace the battery in your Black and Decker LI2000.

---

## TOOLS:

- [Phillips #000 Screwdriver](#) (1)
  - [Phillips #1 Screwdriver](#) (1)
  - [iFixit Opening Tools](#) (1)
  - [Small Needle Nose Pliers](#) (1)
-

## Step 1 — Orange Casing



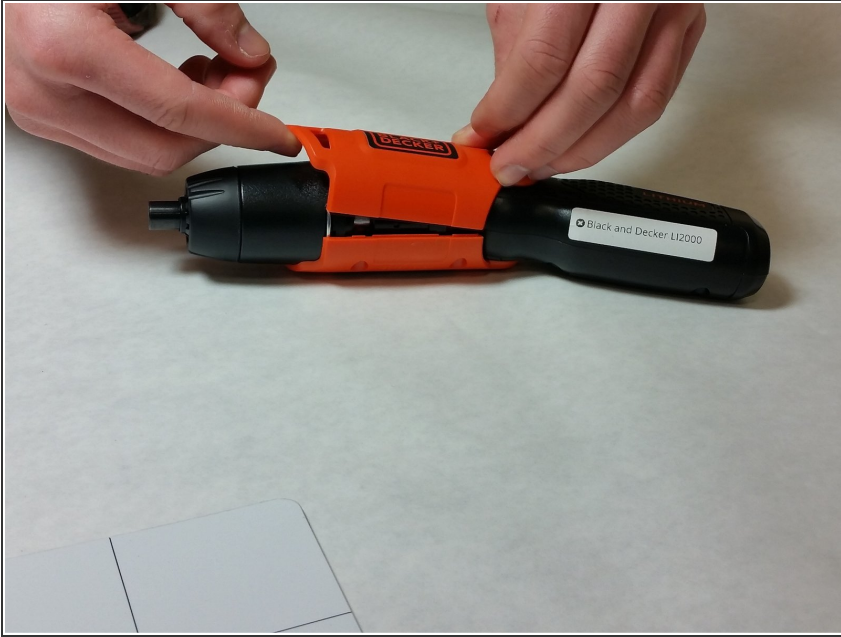
- Remove the following five screws
  - Three 20 mm Phillips #1 screws
  - One 10 mm #000 Phillips screw
  - One 13 mm Phillips 31 screw
- ⚠ When you remove the 13 mm screw, the spring may pop out of the screwdriver. Point the backside of the screwdriver away from your face and others.

## Step 2



- Remove the black sticker with recycling information.

### Step 3



- Use your fingers or a plastic opening tool to pry the casing apart.

### Step 4



- Remove the plastic slider by picking it up off the screwdriver.
- ⓘ You may consider leaving half of the casing on the screwdriver to make handling the screwdriver easier.

## Step 5 — Handle



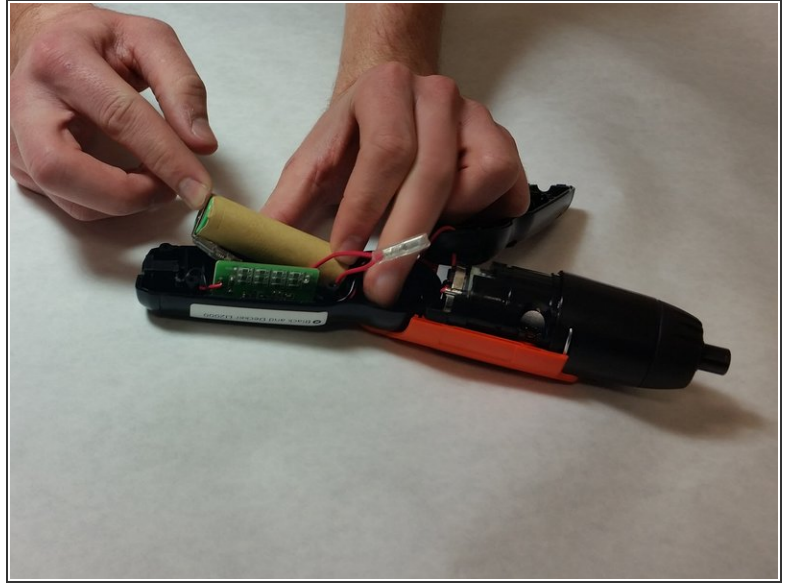
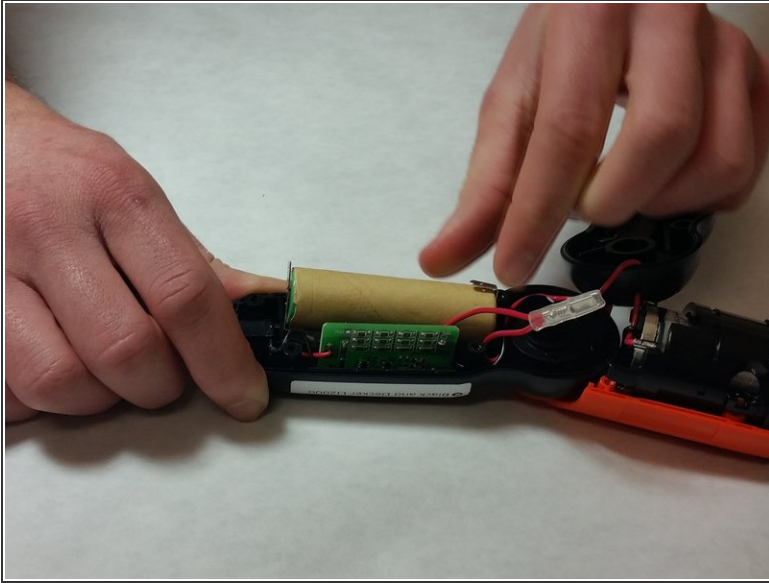
- Remove the four 15mm Phillips #1 screws.

## Step 6



- Use a plastic opening tool to pry the casing apart.

## Step 7 — Battery



- Using pliers or your fingers, remove the leads off of the battery.

To reassemble your device, follow these instructions in reverse order.