



Black and Decker LI2000 Charging Port Replacement

Replace the charging port on the end of the screwdriver.

Written By: Katherine Simmons



INTRODUCTION

Use this guide to remove or replace the charging port in your Black and Decker LI2000.



TOOLS:

- [Phillips #000 Screwdriver](#) (1)
 - [Phillips #1 Screwdriver](#) (1)
 - [iFixit Opening Tools](#) (1)
 - [Wire cutters/side cutters](#) (1)
 - [Solder](#) (1)
 - [Soldering Iron](#) (1)
-

Step 1 — Orange Casing



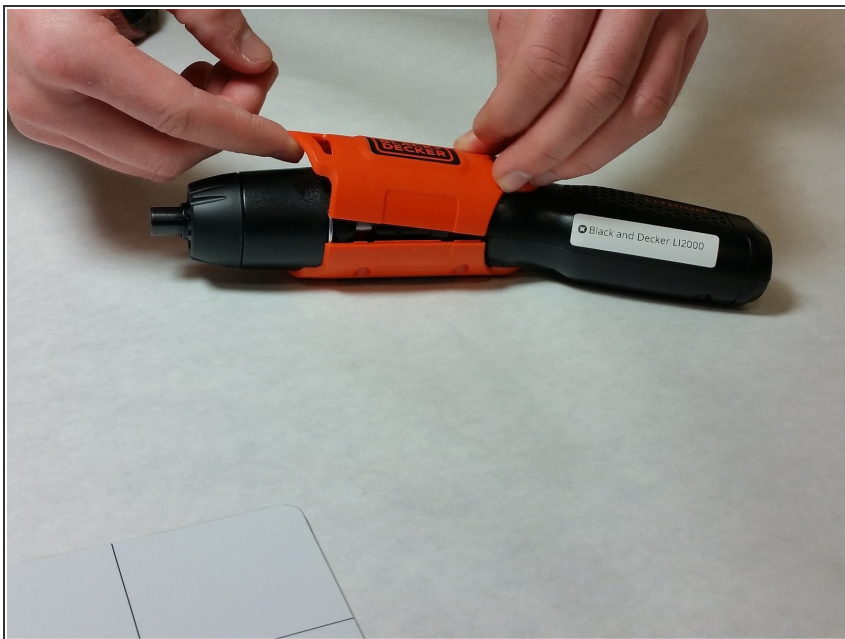
- Remove the following five screws
 - Three 20 mm Phillips #1 screws
 - One 10 mm #000 Phillips screw
 - One 13 mm Phillips 31 screw
- ⚠ When you remove the 13 mm screw, the spring may pop out of the screwdriver. Point the backside of the screwdriver away from your face and others.

Step 2



- Remove the black sticker with recycling information.

Step 3



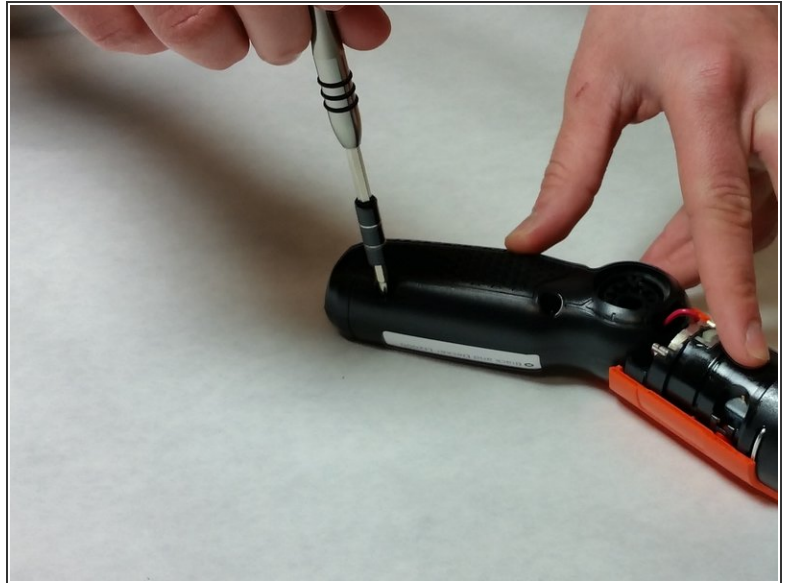
- Use your fingers or a plastic opening tool to pry the casing apart.

Step 4



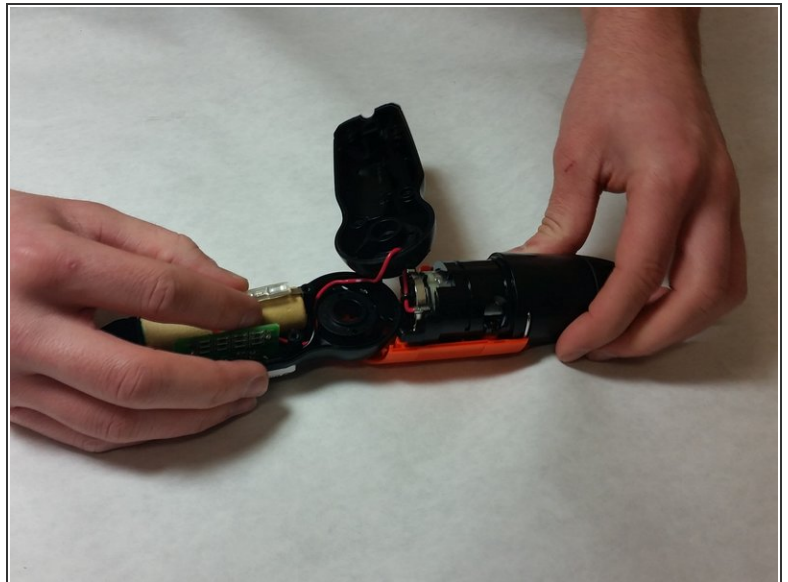
- Remove the plastic slider by picking it up off the screwdriver.
- ⓘ You may consider leaving half of the casing on the screwdriver to make handling the screwdriver easier.

Step 5 — Handle



- Remove the four 15mm Phillips #1 screws.

Step 6



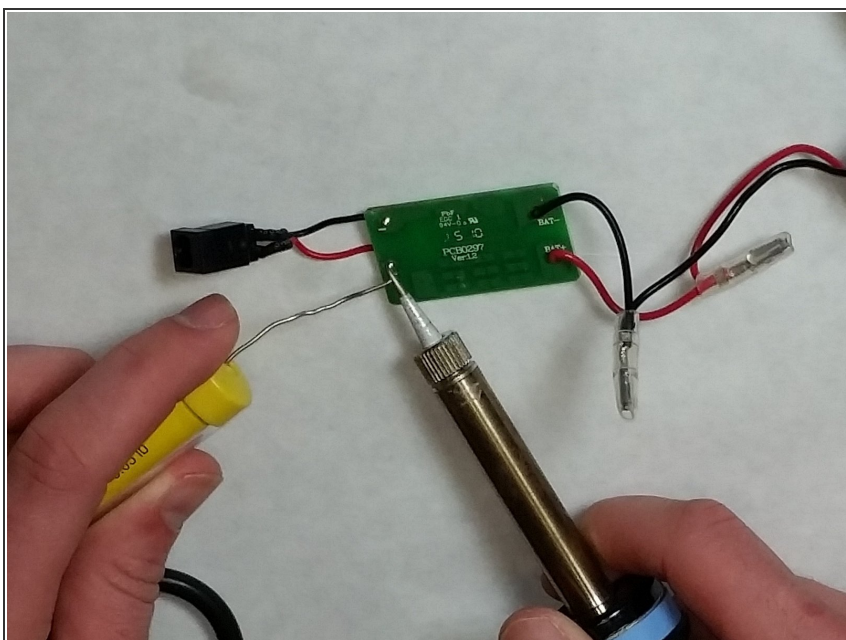
- Use a plastic opening tool to pry the casing apart.

Step 7 — Charging Port



- Pull the charging port and circuit board away from the casing.

Step 8



- Refer to the [Soldering Technique Guide](#) to remove the wires at the charging port by heating the existing solder on the contacts.
- ⓘ Be sure to keep track of which wire was attached to each lead.

To reassemble your device, follow these instructions in reverse order.