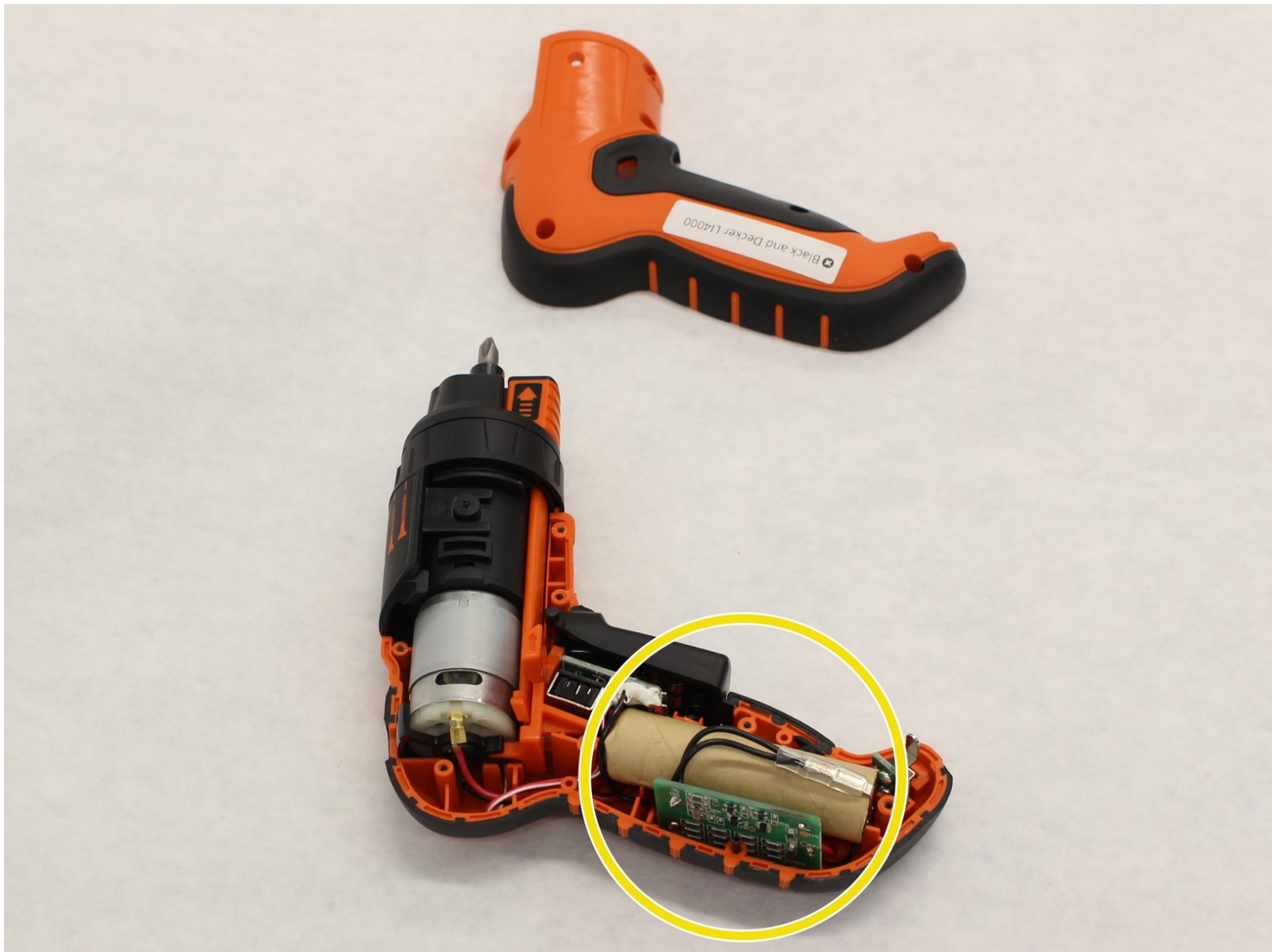




# Black and Decker LI4000 Battery Replacement

This guide will show you how to replace the battery in a Black and Decker LI4000.

Written By: Nicholas Kniola



## INTRODUCTION

Once you have removed the exterior casing, this guide will show you how to remove and replace the lithium-ion battery in your LI4000.



### TOOLS:

- [Heavy-Duty Spudger](#) (1)
- [Phillips #1 Screwdriver](#) (1)



### PARTS:

- [LI4000 Battery](#) (1)

## Step 1 — Outer Casing



- Remove the stickers found on the bottom and sides of the LI4000, using a spudger.

## Step 2



- Remove all six of the 12-mm long case screws with a Philips #1 Screwdriver. These screws can be found on the side of the LI4000 with the "Warning" sticker.

### Step 3





- Remove the two screws that are 4-mm Hexagonal #2.5. These are very small case screws that can be found underneath the two stickers from Step 1.

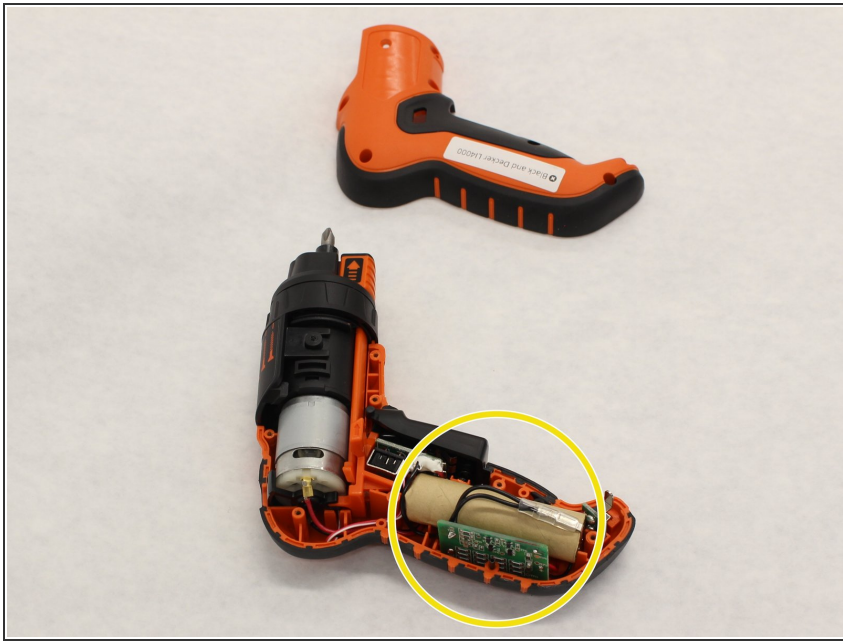


## Step 4



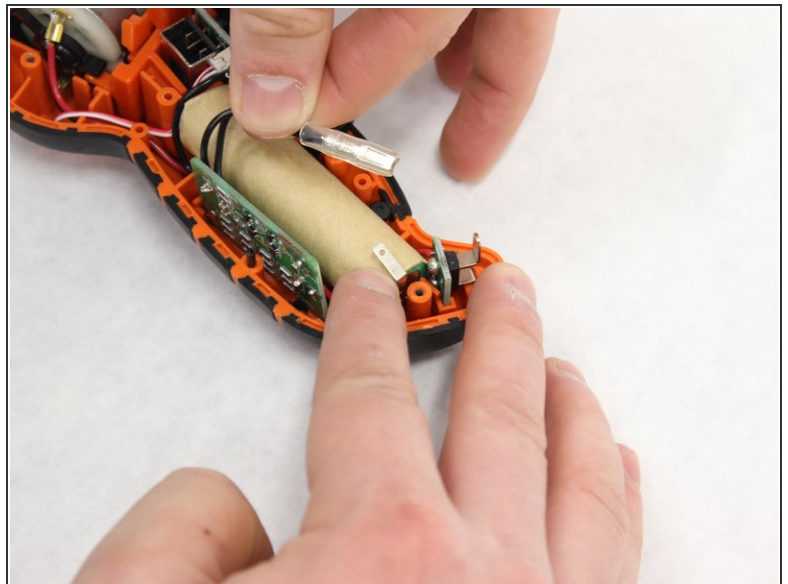
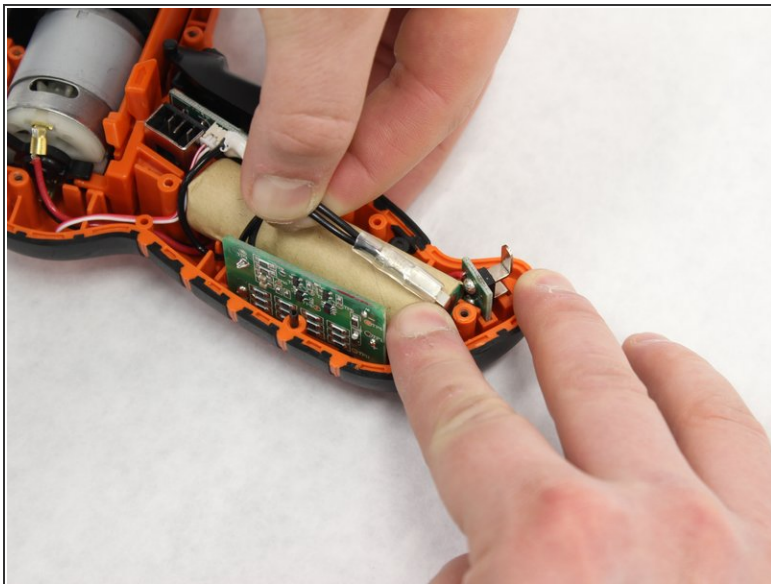
-  When working with electronics, it's important to choose a tool that's ESD-safe to avoid accidental damage to the device. The metal spudger is great when you need serious prying power, but the regular black nylon spudger or a plastic opening tool should be used whenever possible.
- Pry on the seam as shown with a Spudger, in order to get the top casing loose.
  - Pull the two sides apart while making sure the side that you are removing is the one with all of the case screw holes.
-  It is good practice to remove the top connection of the battery as shown in the third image, as this will be the first step to replacing any of the components for this screwdriver.

## Step 5 — Battery



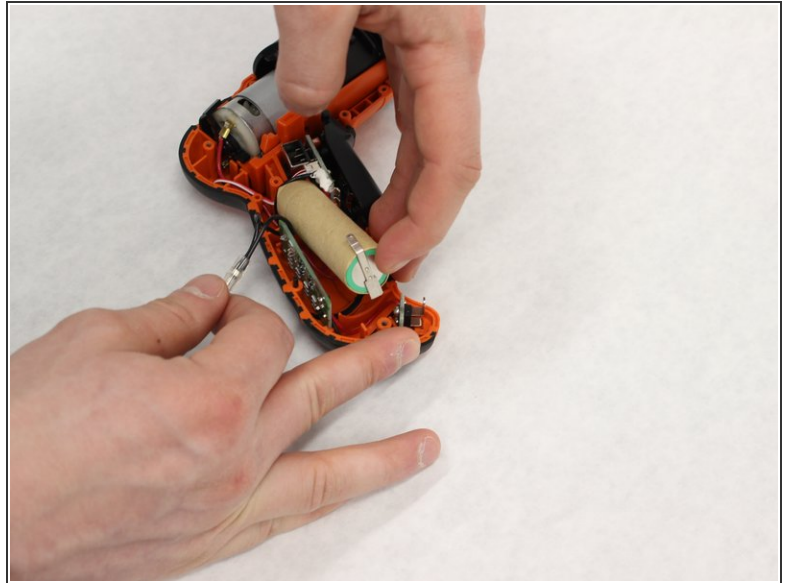
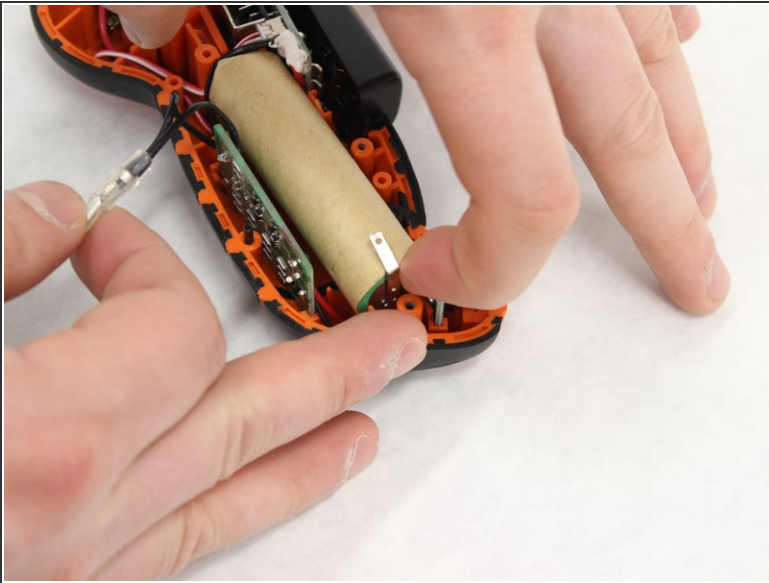
- Locate the battery. The cardboard covered cylinder is the rechargeable battery.

## Step 6



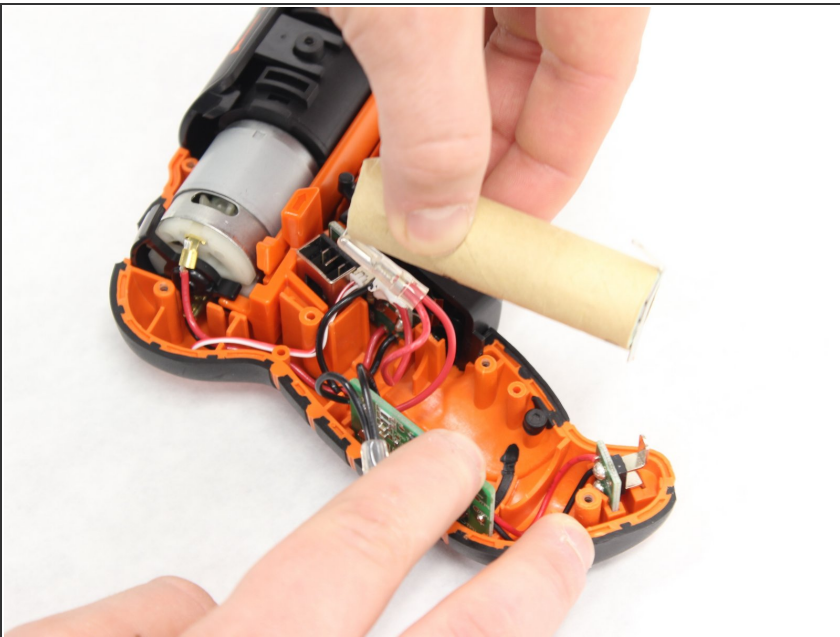
- Detach the contact by pulling the contact away from the battery.

## Step 7



- Gently lift the end of the battery out of the plastic casing

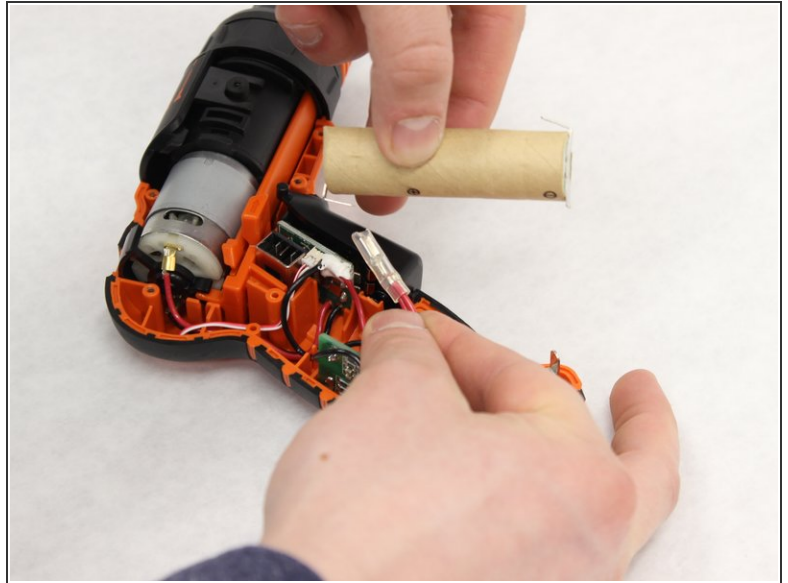
## Step 8



- Locate the other contact on the rear side of the battery.



## Step 9



- Detach the contact by pulling the contact away from the battery.

## Step 10



- To install a new battery, repeat the steps in reverse order with a new battery.

To reassemble your device, follow these instructions in reverse order.