



Black and Decker PS1800 Actuator Fwd/Rev Replacement

This guide will show how to replace the Actuator Fwd/Rev on the Black and Decker PS-1800.

Written By: Hamza Nawaz



INTRODUCTION

This will guide you through the process of removing/replacing the Actuator Fwd/Rev switch on the Black and Decker PS-1800.



TOOLS:

- [Phillips #00 Screwdriver](#) (1)
-

Step 1 — Open the Outer Drill Case



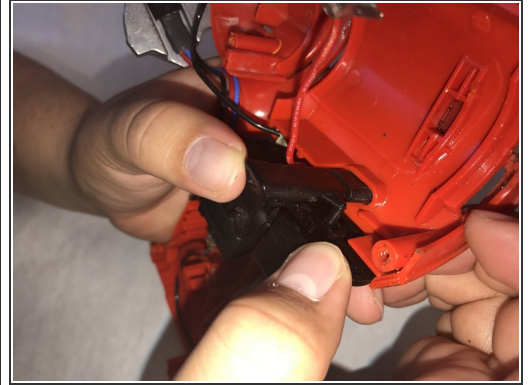
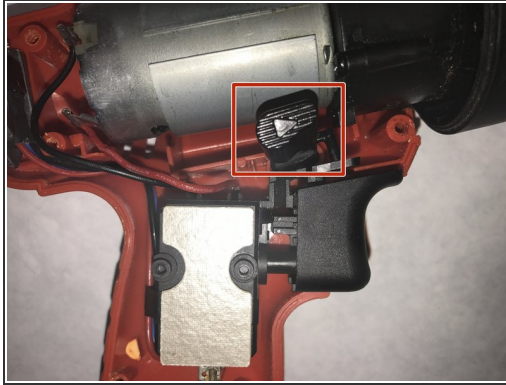
- Lay the drill on its side, assuring that the screw holes are facing upwards.
- Remove seven 12 mm screws using a Phillips #00 screwdriver.

Step 2



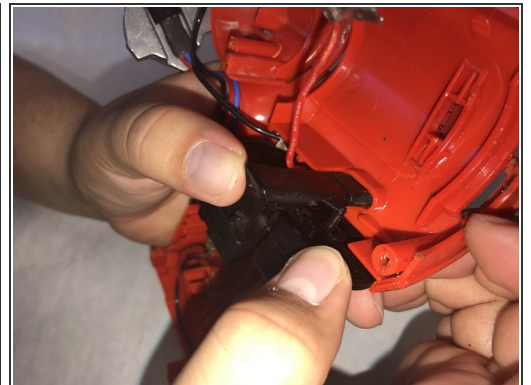
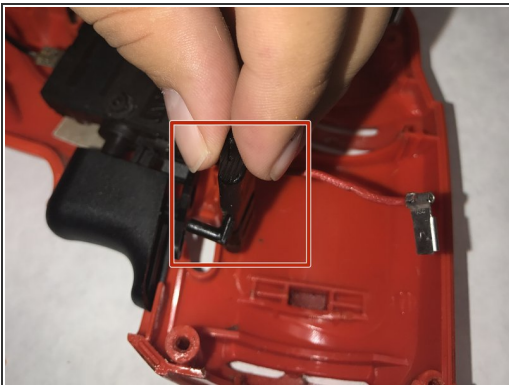
- Separate the outer drill case to expose the components and switch.

Step 3 — Actuator Fwd/Rev



- Start separating the outer shell into two parts.
- You will find the Fwd/Rev actuator on the right side of the drill, underneath the motor.

Step 4



- Carefully remove the actuator from the drill.
- Replace the new actuator by inserting it the same way you took it out.

To reassemble your device, follow these instructions in reverse order.