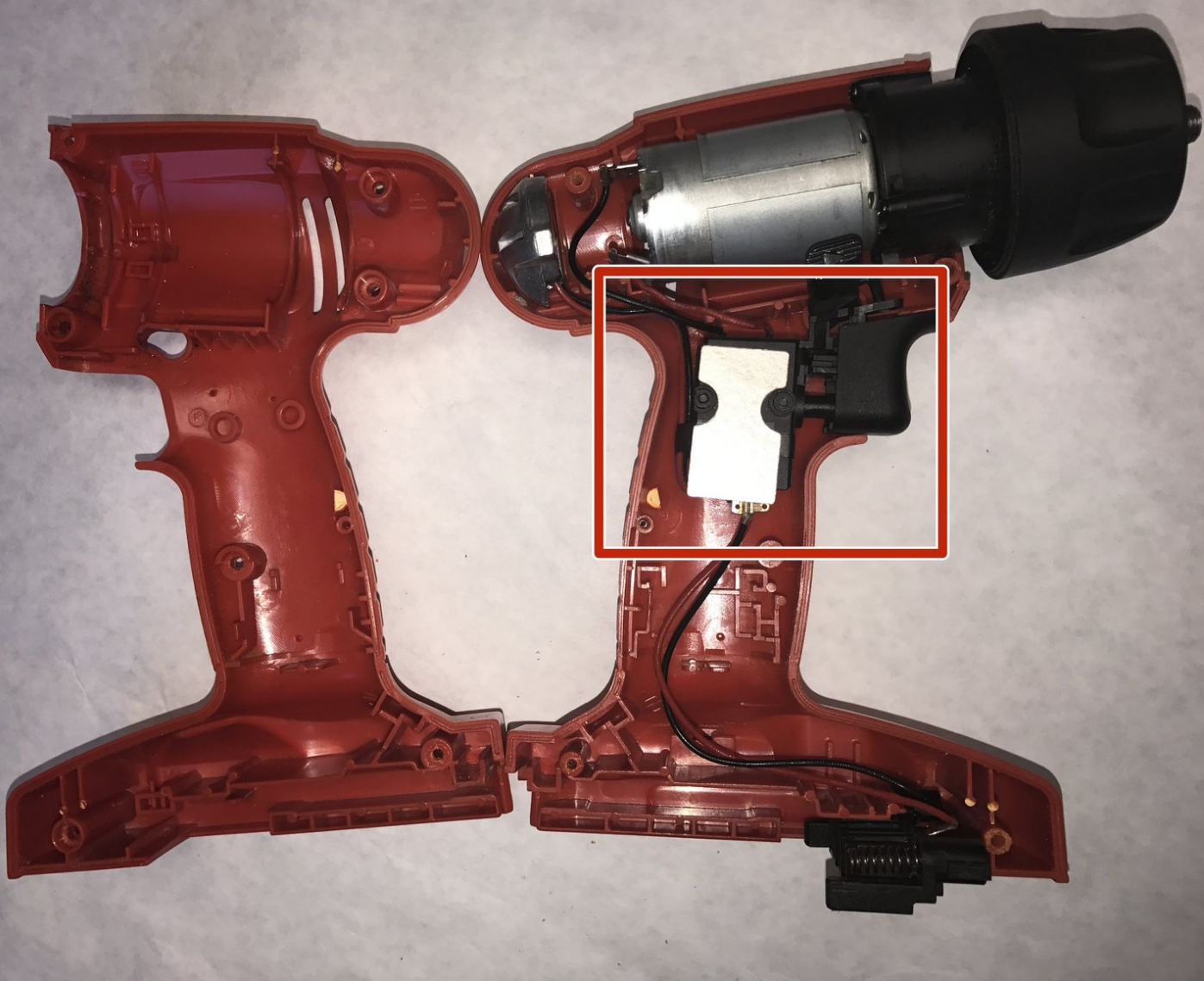




Black and Decker PS1800 Switch Replacement

Replacing the Black and Decker PS1800 switch.

Written By: Hamza Nawaz



INTRODUCTION

This guide describes how to replace the Black and Decker PS1800 switch. A soldering gun is necessary to replace the switch. Personal protective equipment is suggested.



TOOLS:

- [Phillips #00 Screwdriver](#) (1)
-

Step 1 — Open the Outer Drill Case



- Lay the drill on its side, assuring that the screw holes are facing upwards.
- Remove seven 12 mm screws using a Phillips #00 screwdriver.

Step 2



- Separate the outer drill case to expose the components and switch.

Step 3 — Switch



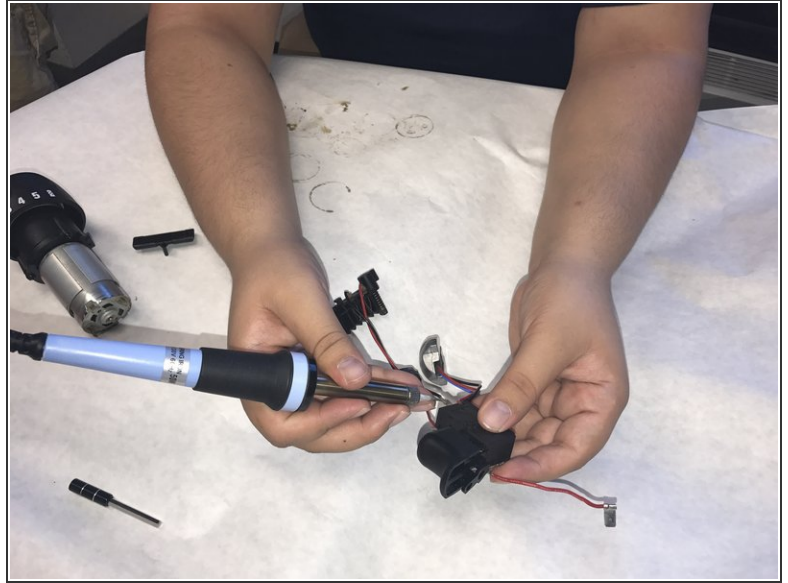
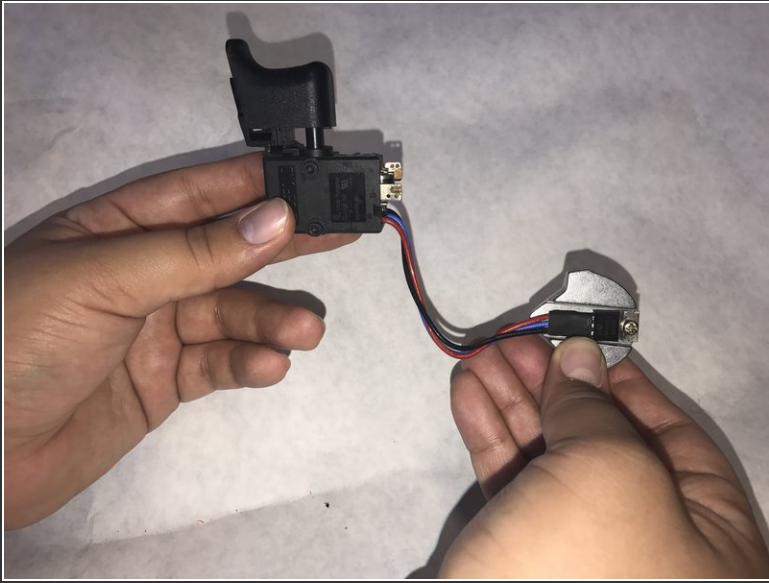
- Identify the switch in center of the drill.
- Remove the screws from the switch.
- Remove the switch cover.

Step 4



- Locate the switch inside the drill.
- Remove the switch from the drill.

Step 5



- Solder off all the joints.

Step 6



- Replace the switch joints.

Step 7



- Insert the new switch.
- Return switch cover and tighten screws to hold in place.

To reassemble your device, follow these instructions in reverse order.