



Black and Decker TO1303SB Door Replacement

Bring openness and closeness back to the doorway of your life.

Written By: Alejandro Martin



INTRODUCTION

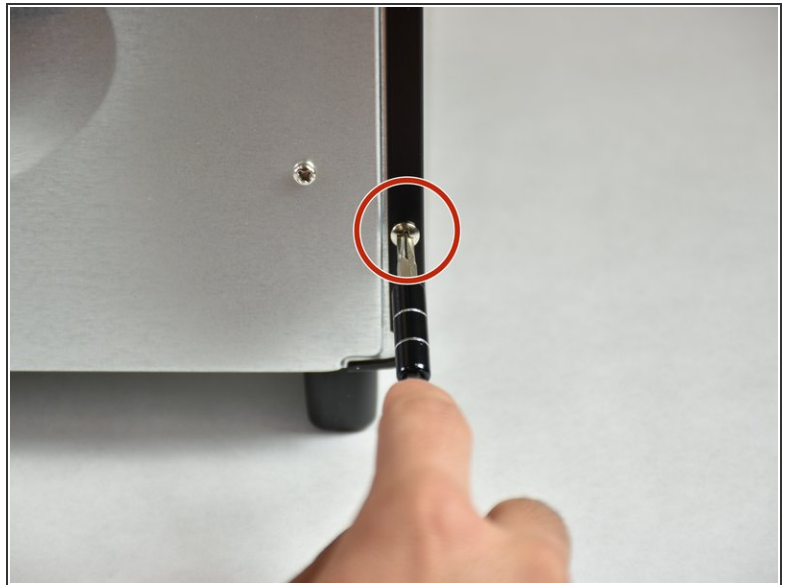
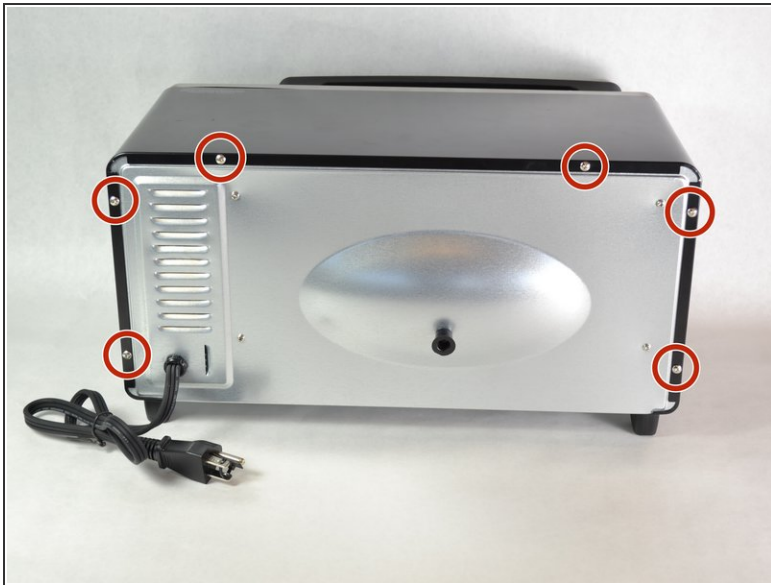
This guide is used to replace your toast oven door completely. If your handle is broken or melted, you will have to replace the door fully. You will have to remove the top cover, control knobs, and the door spring in order to remove the door. There are five steps in this guide to help you get your door replaced.



TOOLS:

- [Metal Spudger](#) (1)
 - [T15 Torx Screwdriver](#) (1)
 - [Small Needle Nose Pliers](#) (1)
 - [Phillips #2 Screwdriver](#) (1)
-

Step 1 — Top Cover



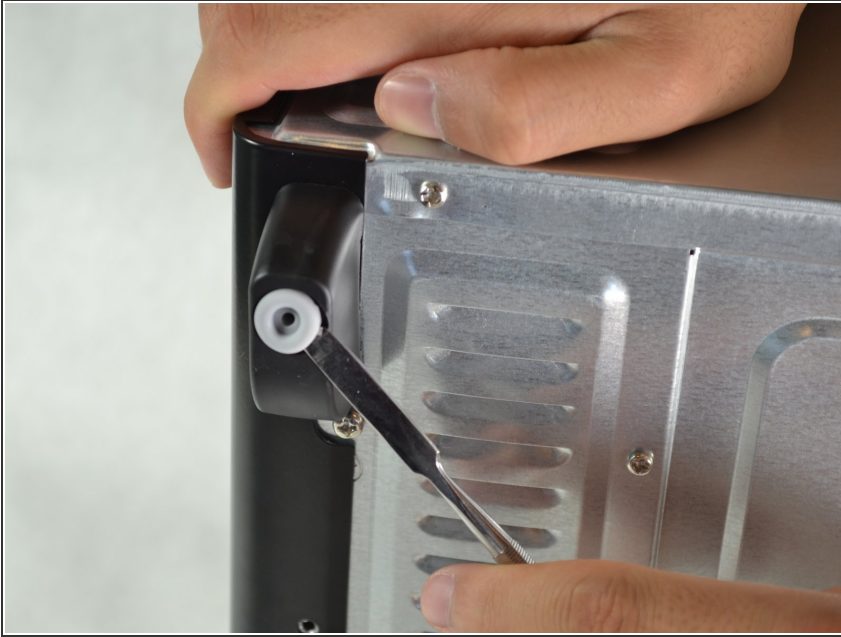
- Remove the six 9.5mm screws on the back panel using a #2 Phillips screwdriver.

Step 2



- Remove the two 13mm screws, located between the feet on the bottom of the cover, using a Torx T15 screw driver.

Step 3



- Using the metal spudger, carefully pry out the rubber base on each foot to access the screws.

Step 4



- Remove the 11.5 mm screws using a #2 Phillips screwdriver.

Step 5





- Remove the back cover by gently pulling the sides of the cover apart from the rest of the oven. Then, tilt the cover towards the face and pull back at an upward angle. The cover should slide right off.

Step 6 — Door Spring

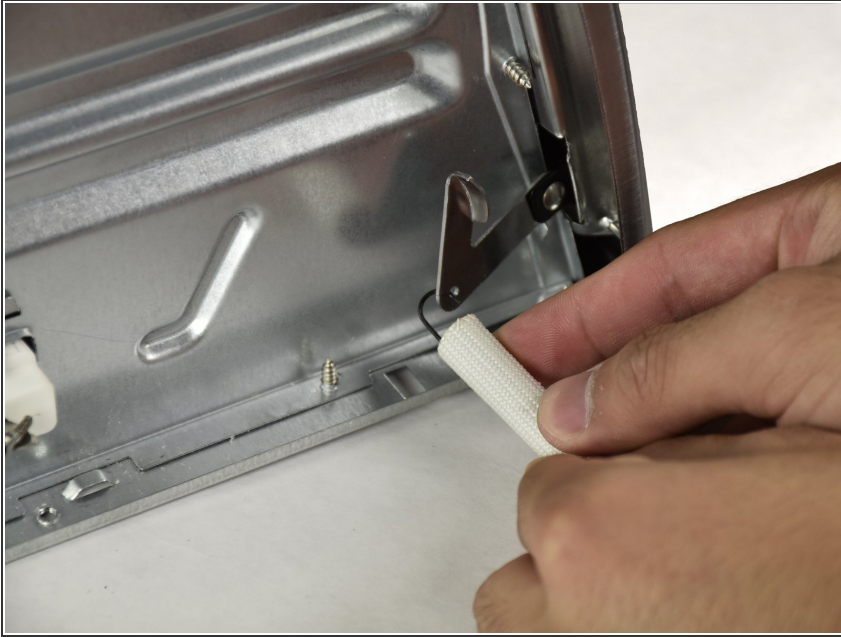


- With the needle nose pliers, grasp the hook of the rear spring as close as you can to the coils. Stretch the spring back and, with a twisting motion, pull the hook out of its catch.

 It is recommended to close the door before doing this.

 Slowly relieve the tension after pulling it out of the catch or else it may damage the spring attachment.

Step 7



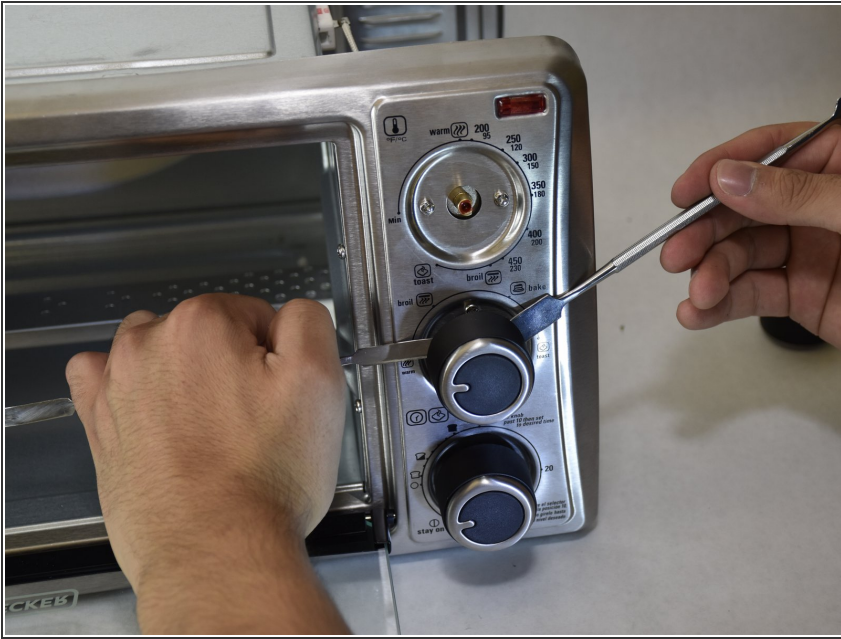
- Pull the front hook out of the spring attachment.
- ⓘ When replacing the spring, it is recommended to start by reattaching the hook onto the rear catch, then the front spring attachment. Attaching to the front spring attachment first will cause unnecessary stress to the attachment and may cause it to deform.

Step 8 — Control Knobs



- Using two metal spudgers, pry the top control knob directly outward.

Step 9



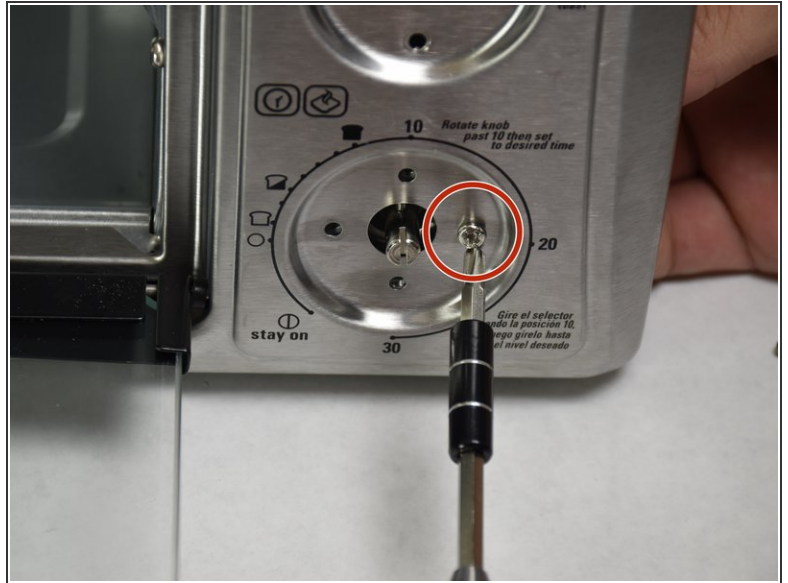
- Using the two metal spudgers, pry the middle control knob directly outward.

Step 10



- Using the two metal spudgers, pry the bottom control knob directly outward.

Step 11 — Door



- Remove the two #2 Phillips Head x 5.5mm screws holding the timer controls to the face.

Step 12



- On the left side, use a metal spudger to push the hinge pin in as far as you can.

Step 13



- On the right side, pull the now extruded hinge pin out about 1/4 of an inch.
- ⓘ If necessary, use tweezers or needle- nose pliers to perform this step.
- ⓘ Removing the oven controls may make it easier to perform this step. See steps 9-11 for replacing the Heat Controls at [Black and Decker TO1303SB Heat Controls Replacement](#)

Step 14



- On the left side, push out the spring attachment while pulling on the door in an upward, outward, location

⚠ Do not lose the rubber bushing that falls out.

ⓘ You may need to push the spring attachment down in order to fit it through the slot in the door.

Step 15



- To remove the door, slightly pull the bottom left corner away from the face and slide the entire door to the left.
- ⓘ During reassembly, make sure to place the rubber bushing back on the axle.
- ⚠ When placing the new door into the toaster, guide the spring attachment back into the slot and push it up when closing the door or else it will get caught and possibly be damaged.

To reassemble your device, follow these instructions in reverse order.