



# Black and Decker TO1303SB Heat Controls Replacement

Replacing the heat controls to bring power back to your toaster oven.

Written By: Alejandro Martin



## INTRODUCTION

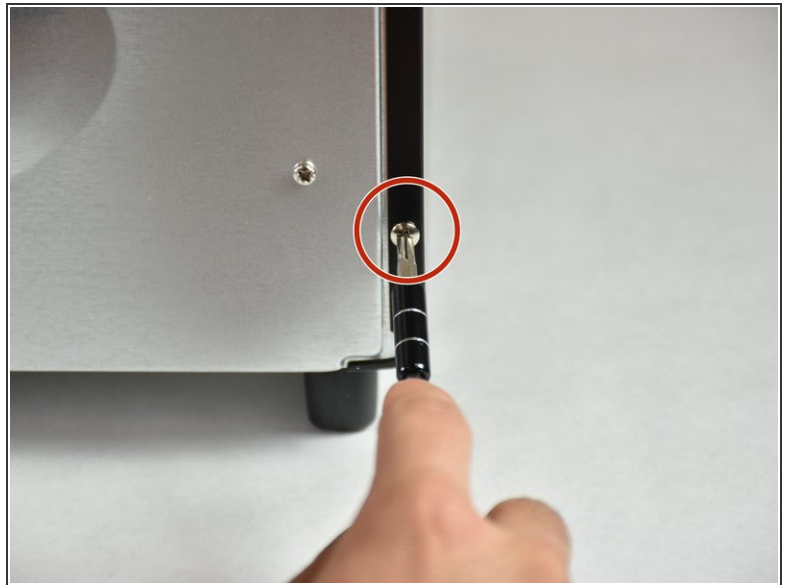
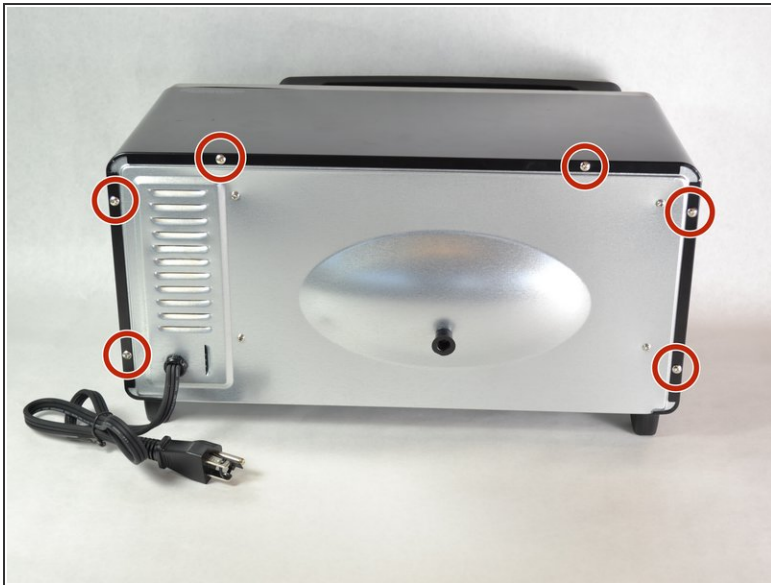
We will show you how to replace the heat controls for the oven and toaster settings. You will have to pop off the control knobs, take off the top cover, and remove screws in order to get to the controls. If your timer is not working, then unfortunately you will need to buy a new toaster over. Make sure you to place the screws back in the correct places and not to rip the heat shielding.

---

### TOOLS:

- [Small Needle Nose Pliers](#) (1)
  - [Tweezers](#) (1)
  - [Metal Spudger](#) (1)
  - [Phillips #2 Screwdriver](#) (1)
  - [T15 Torx Screwdriver](#) (1)
-

## Step 1 — Top Cover



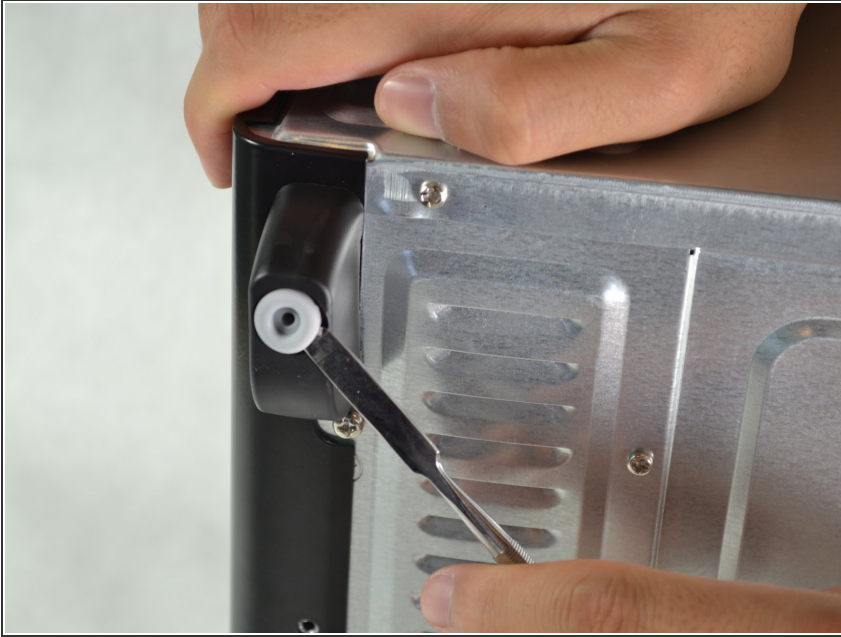
- Remove the six 9.5mm screws on the back panel using a #2 Phillips screwdriver.

## Step 2



- Remove the two 13mm screws, located between the feet on the bottom of the cover, using a Torx T15 screw driver.

### Step 3



- Using the metal spudger, carefully pry out the rubber base on each foot to access the screws.

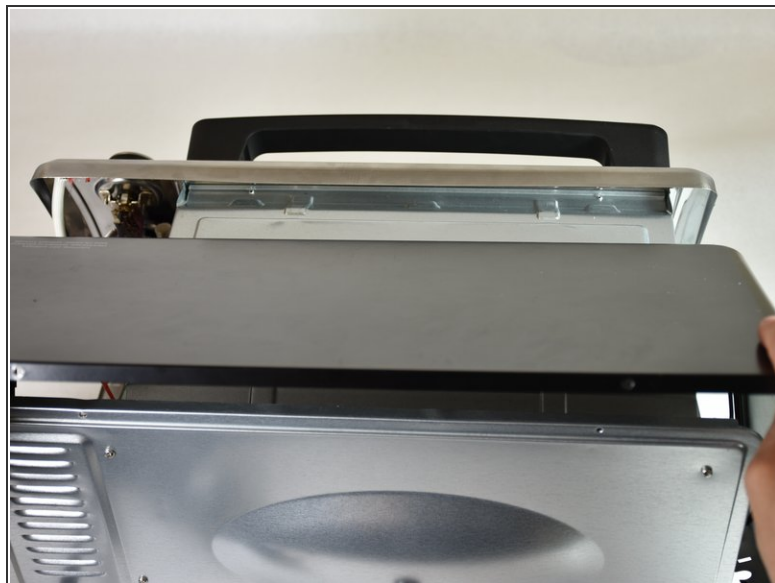
### Step 4



- Remove the 11.5 mm screws using a #2 Phillips screwdriver.



## Step 5



- Remove the back cover by gently pulling the sides of the cover apart from the rest of the oven. Then, tilt the cover towards the face and pull back at an upward angle. The cover should slide right off.

## Step 6 — Control Knobs



- Using two metal spudgers, pry the top control knob directly outward.

## Step 7



- Using the two metal spudgers, pry the middle control knob directly outward.

## Step 8



- Using the two metal spudgers, pry the bottom control knob directly outward.

## Step 9 — Heat Controls



- Remove the two 5.5mm screws, that are holding the oven controls to the face, using a #2 Phillips head screwdriver.

## Step 10



- Remove the two 7.5mm screws, that hold the toaster controls to the face, using a #2 Phillips head screwdriver.

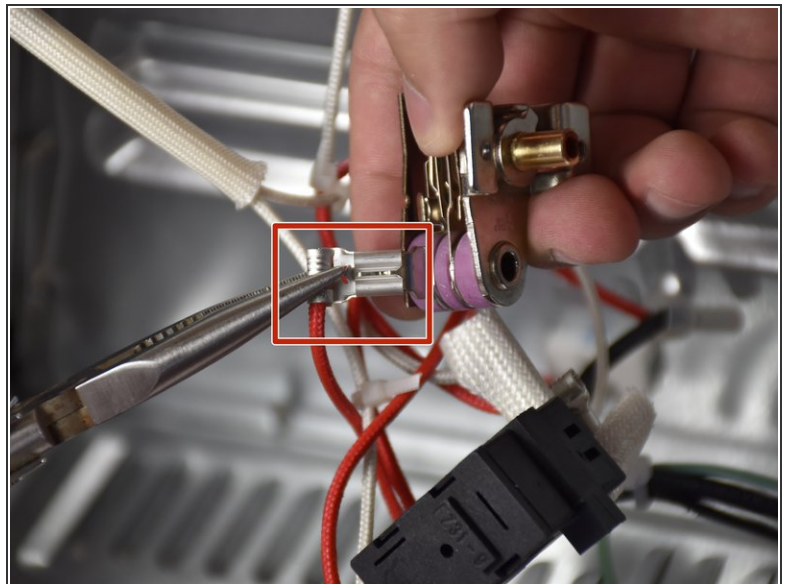
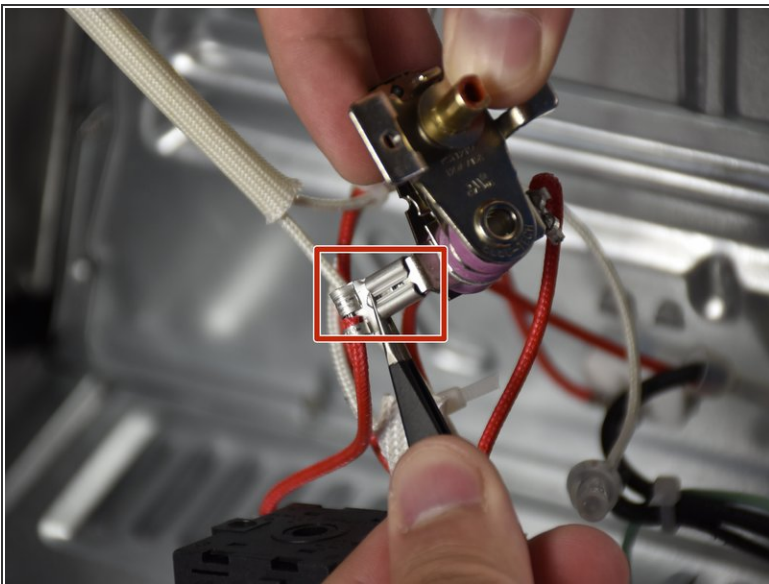


## Step 11



- Remove the two 5.5 mm screws, that hold the timer to the face, using a #2 Phillips head screwdriver.
- ⓘ The timer is removed so that the wires that need to be un-clipped from the heat controls are easier to access.

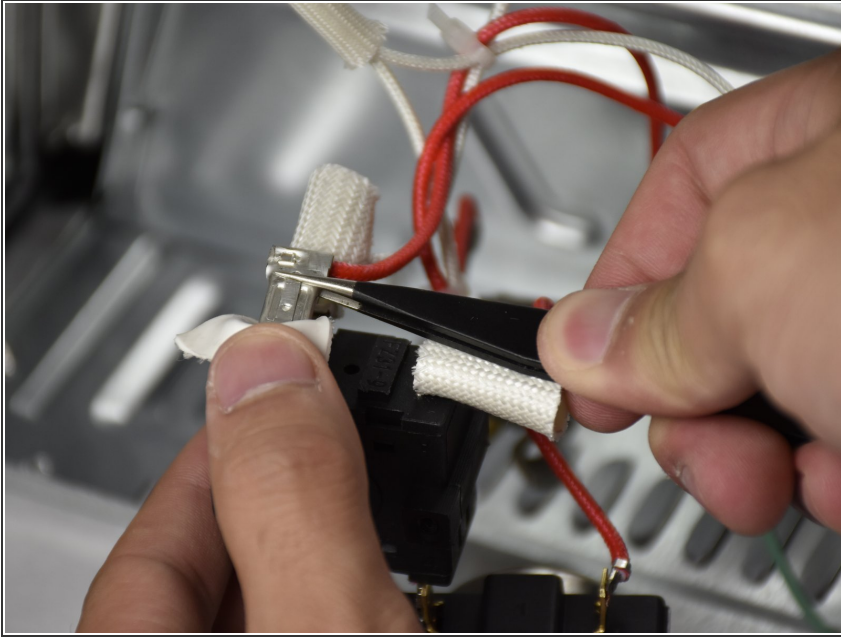
## Step 12



- Press down the metal tab on the oven heat control connector using needle nose pliers and pull outwards to remove the connector.



## Step 13



- Using your thumb, carefully peel back the heat shielding from the connector on the toast heat control.
  - Press down the metal tab on the connector using needle nose pliers or tweezers.
- ⚠ Do not try to peel the heat shielding back too far; it tears easily.
- ⓘ Repeat for each of the three connections on the control.

To reassemble your device, follow these instructions in reverse order.