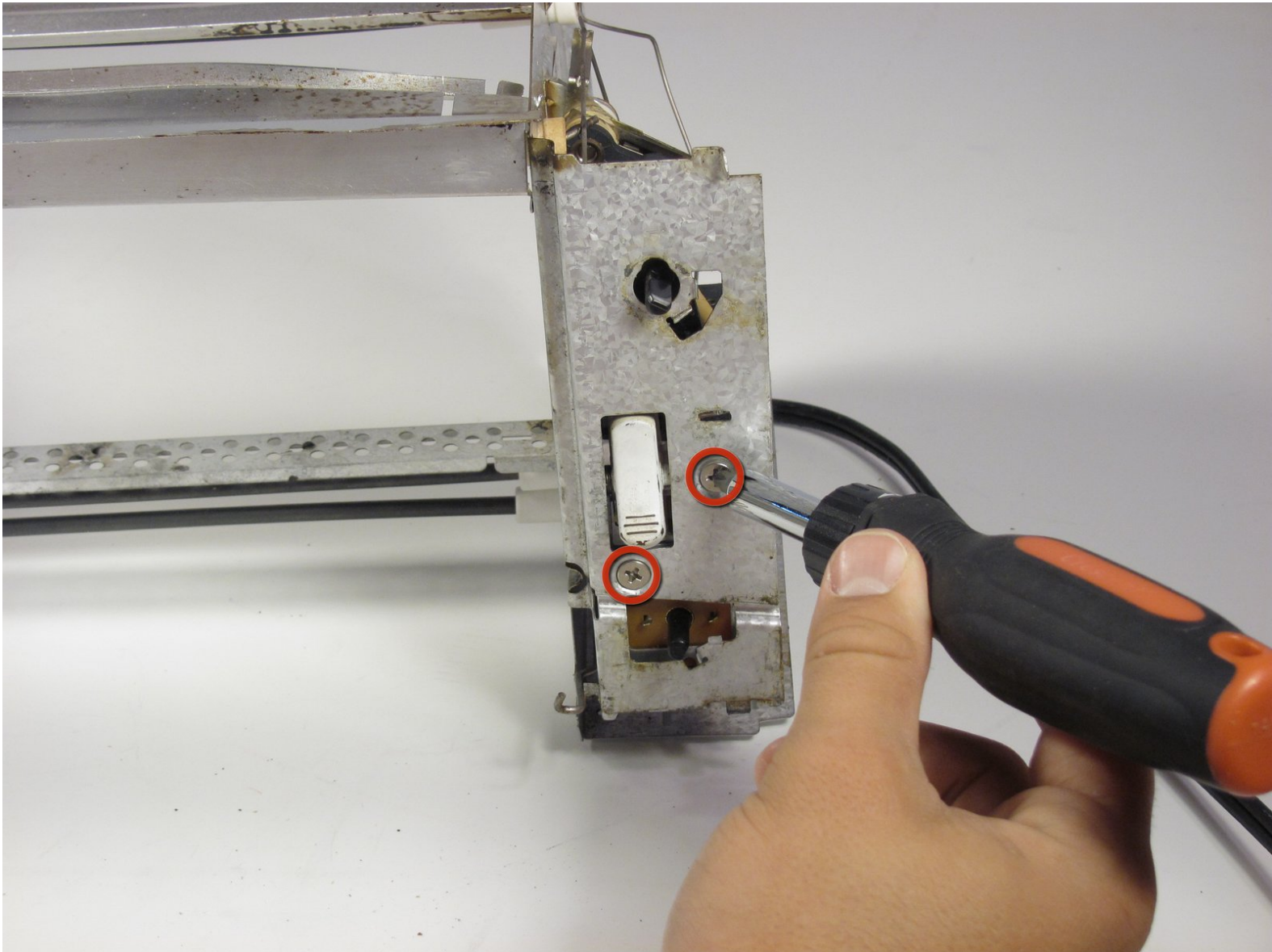




# Black and Decker Toast R Oven On/Off switch Replacement

Remove On/Off switch if the oven is malfunctioning.

Written By: Jonathan



## INTRODUCTION

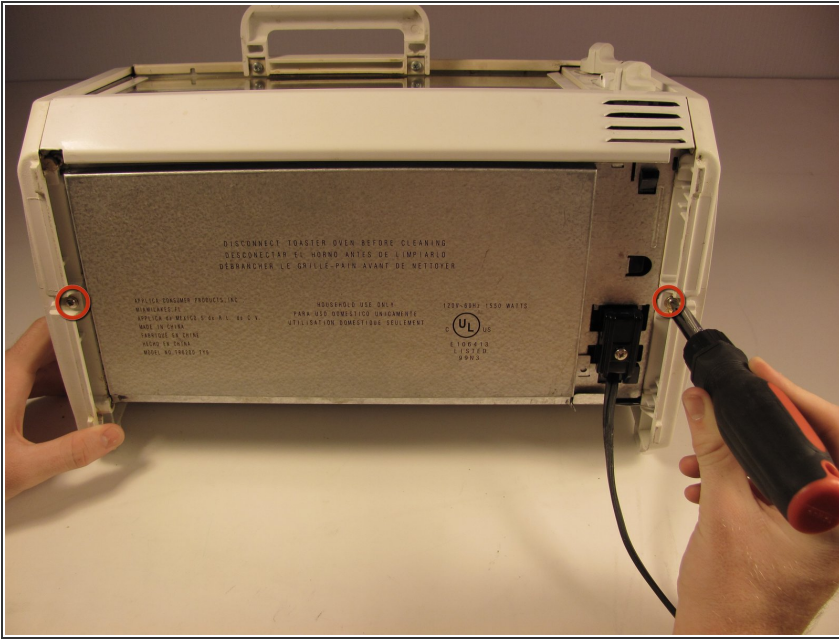
In order to replace to On/Off switch, you will once again have to take apart the whole unit to get to that part.



### TOOLS:

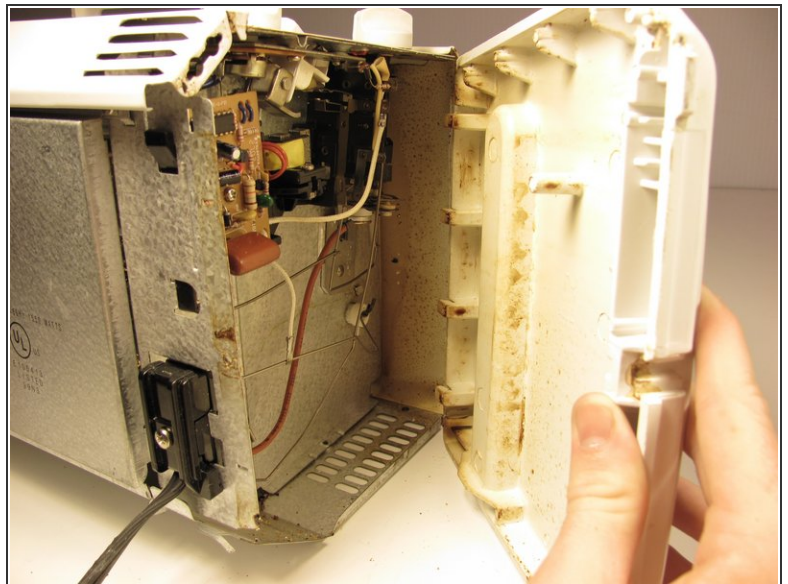
- [Phillips #2 Screwdriver](#) (1)
  - [Large Needle Nose Pliers](#) (1)
-

## Step 1 — How to clean out a Black and Decker Toast R Oven



- ⚠ Make sure that the toaster is unplugged before you begin.
- Turn the toaster over with its backside face down.
- Remove the two Phillips #4 1cm screws that attach the side panels.

## Step 2



- Pull downwards (towards the bottom of the unit) and outward to remove the side panels.

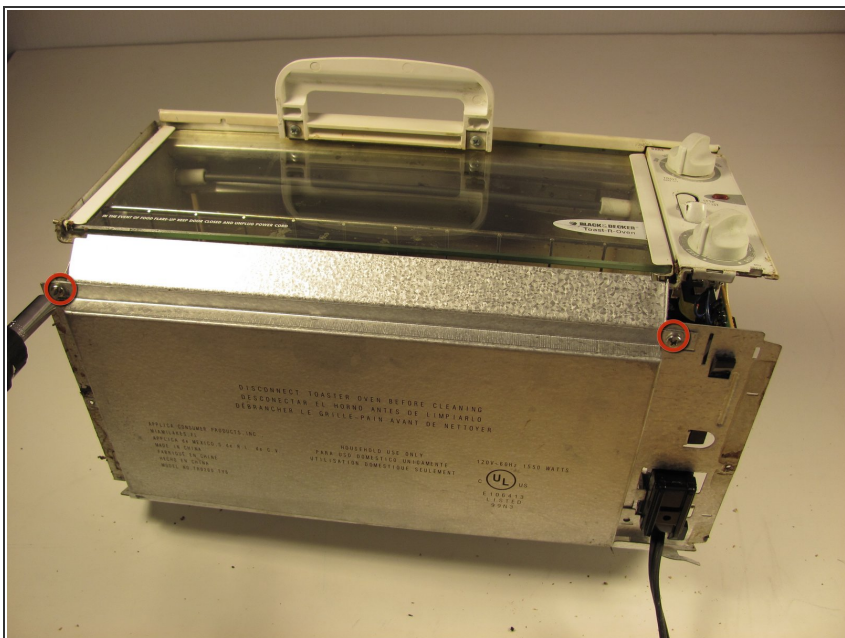


## Step 3



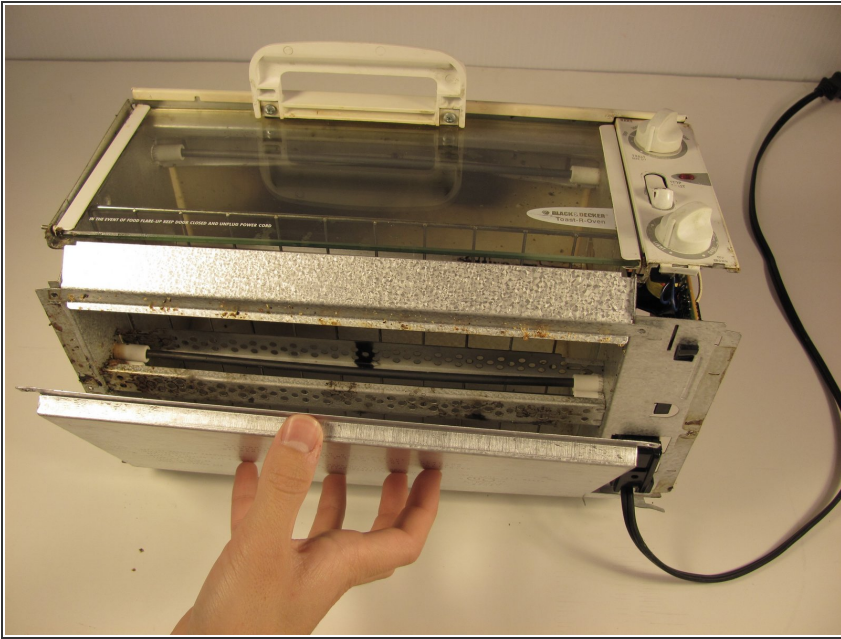
- Remove the metal vent piece that is below the door.
- ⓘ This should slide off easily once both of the side panels are removed.

## Step 4



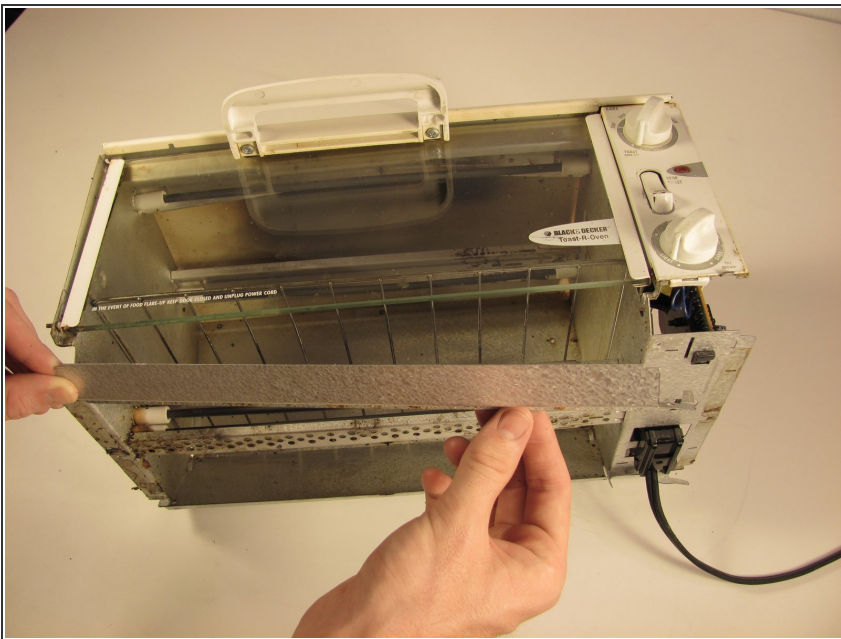
- Remove the two Phillips #4 1 cm screws, which connect the bottom panel to the unit.

## Step 5



- Remove the crumb tray (the bottom, metal panel) from the toaster unit.

## Step 6



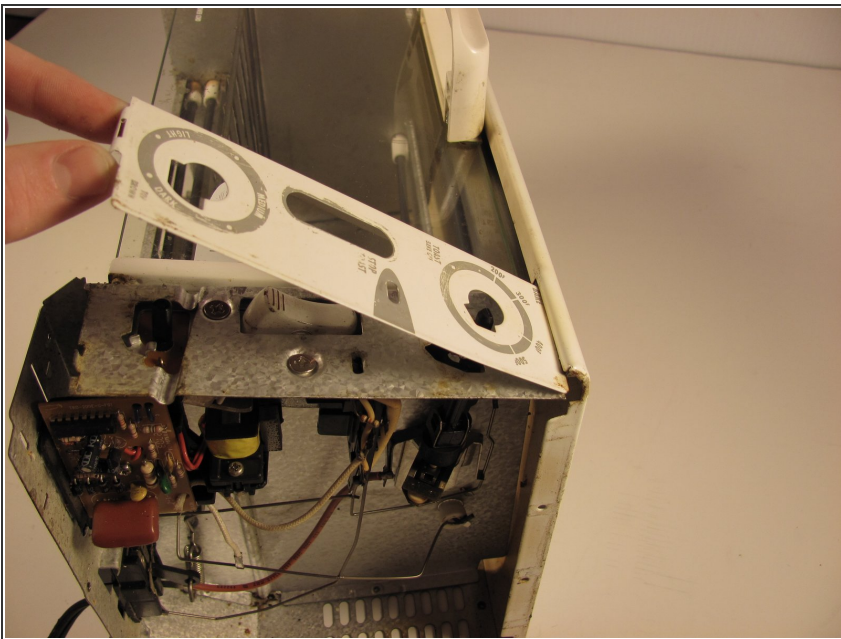
- Remove the aluminum strip from the bottom of unit; this is the piece that is directly under the door.

## Step 7



- Remove the knobs by pulling them upward; they should slide right off.
- When placing the knobs back on the unit, make sure the semicircle notch fits correctly in the hole so that the knobs don't fall off.

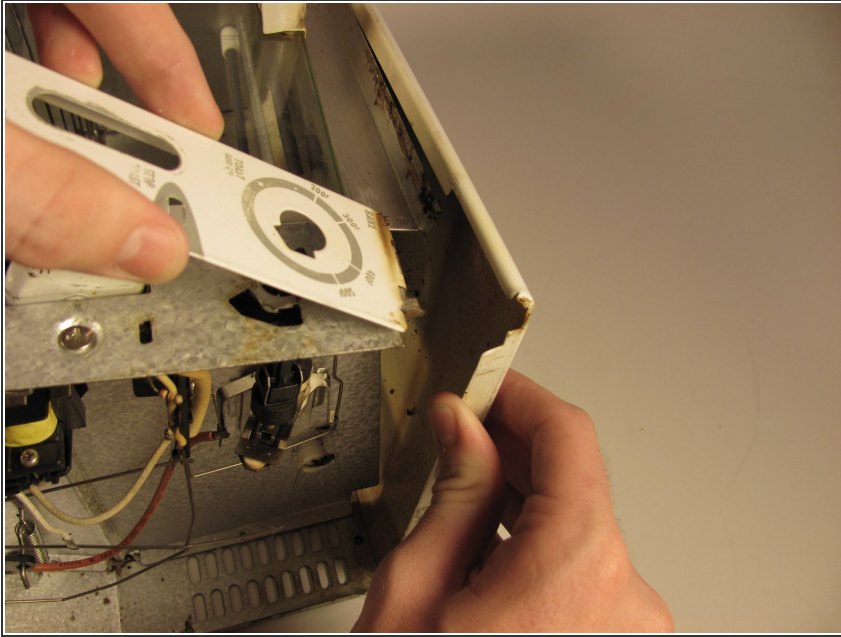
## Step 8



- Unhook the bottom of the the display panel from the toaster unit.
- ⓘ It will be a little tough to pry off, but don't be afraid to be forceful. You can use your hands, or pliers, to bend the metal piece backwards.

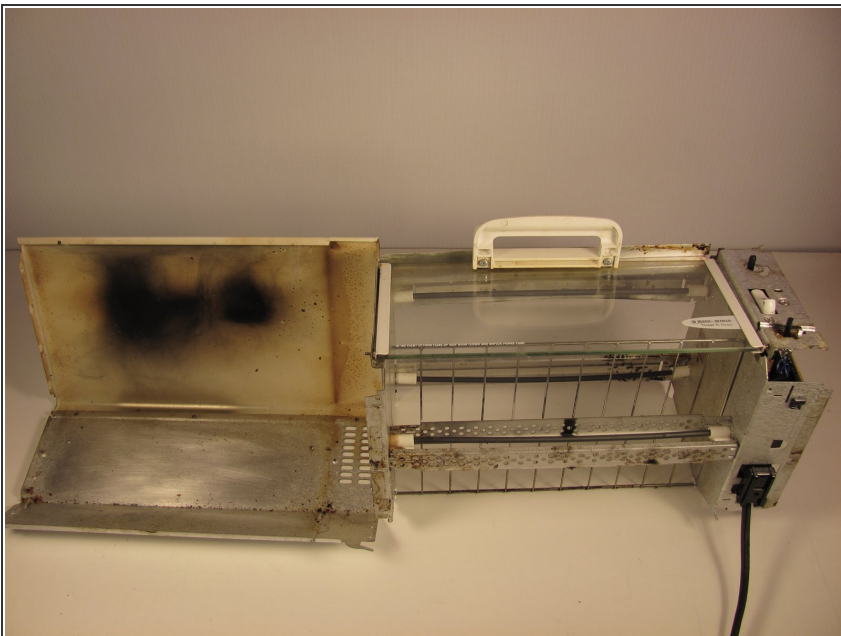


## Step 9



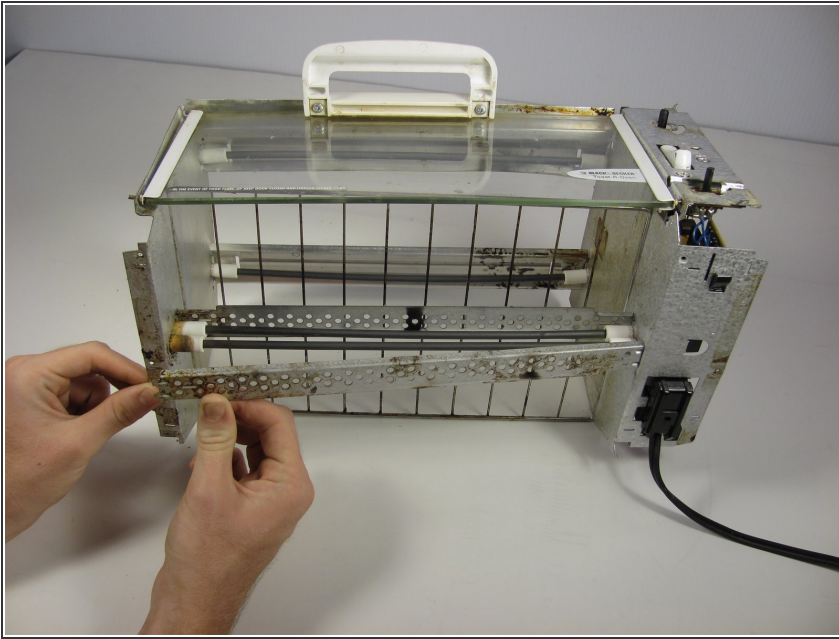
- Begin to detach the back panel from the toaster unit.
- Then, unhook the rest of the display panel.
- ⓘ This will also be a little tough to get off, but don't be afraid to be forceful.

## Step 10



- Now, you can clean the outside units of the toaster oven.

## Step 11



- Remove the the heating coil protection bar from the toaster unit by first pulling out the left side.

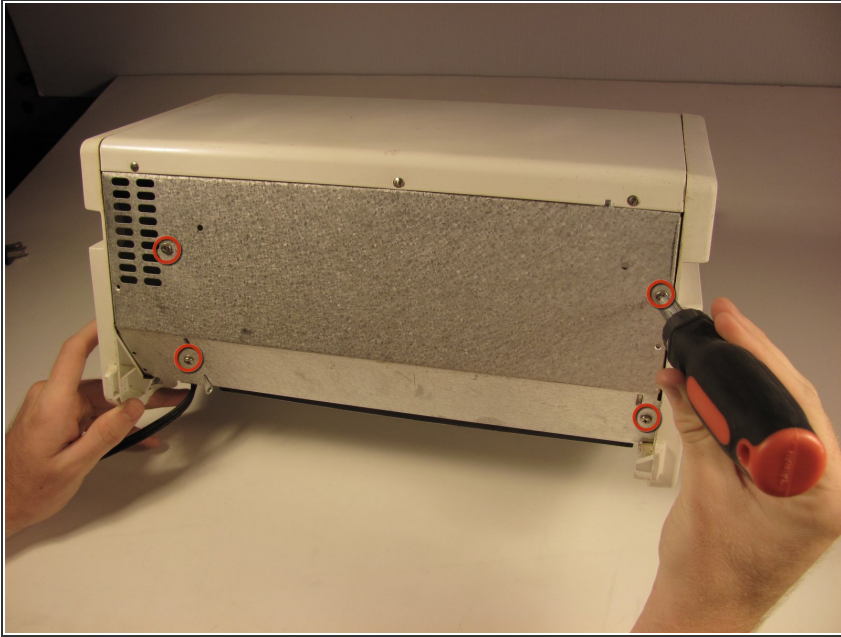
## Step 12



- Finish removing the outside cover by lifting the lid upward.

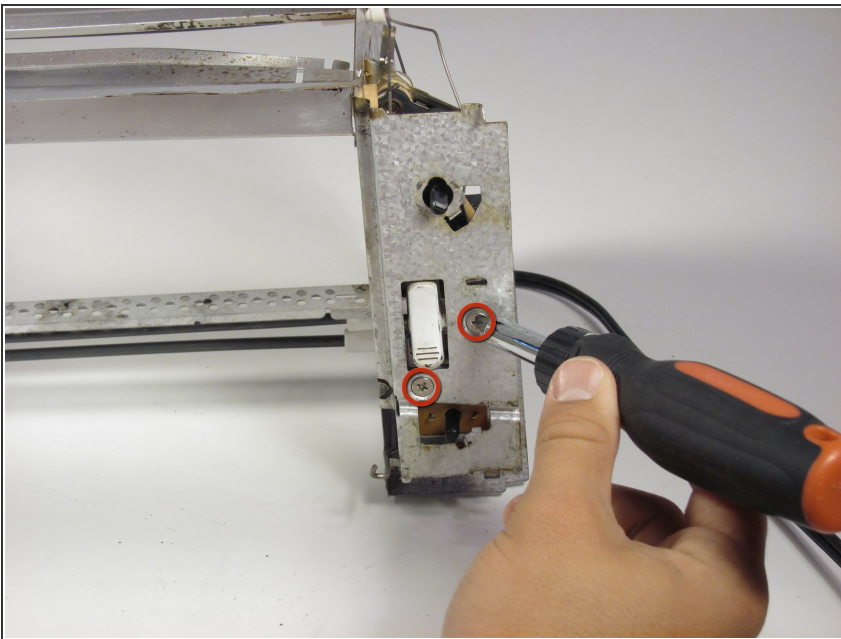


## Step 13



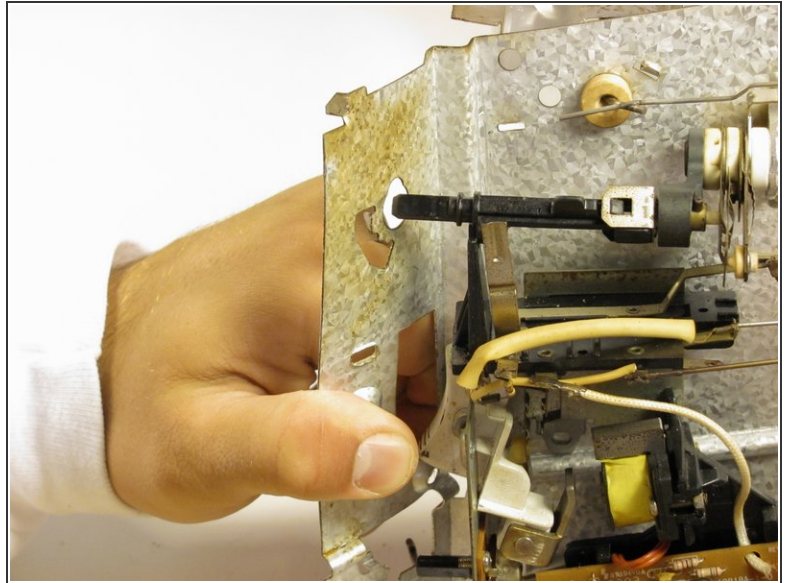
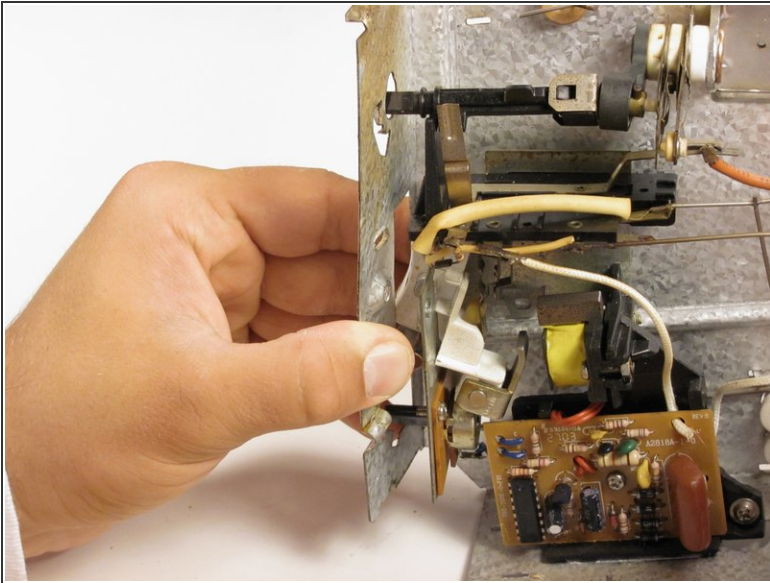
- Remove the four Phillips #4 1 cm screws from the back of the unit.

## Step 14 — On/Off switch



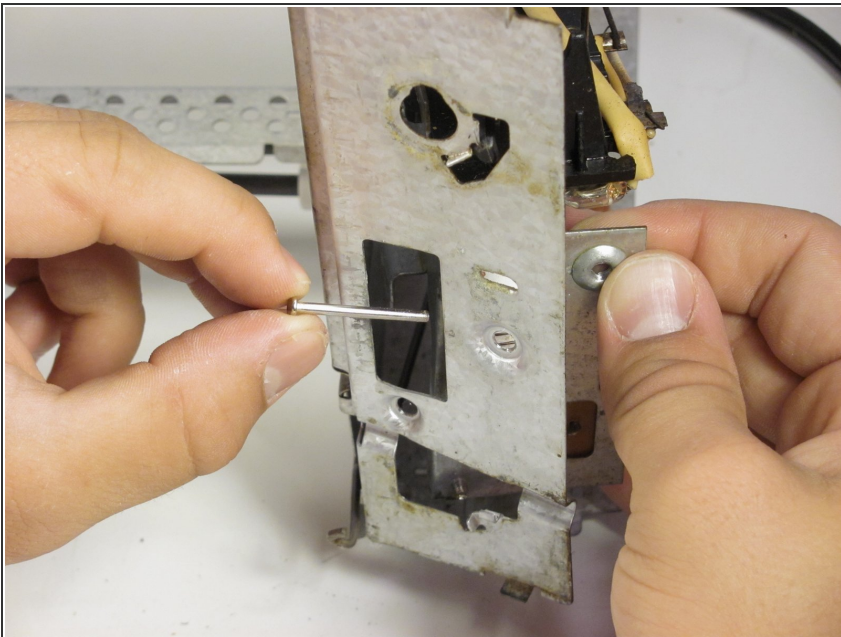
- Remove the two Phillips #4 1 cm screws that were under the faceplate.

## Step 15



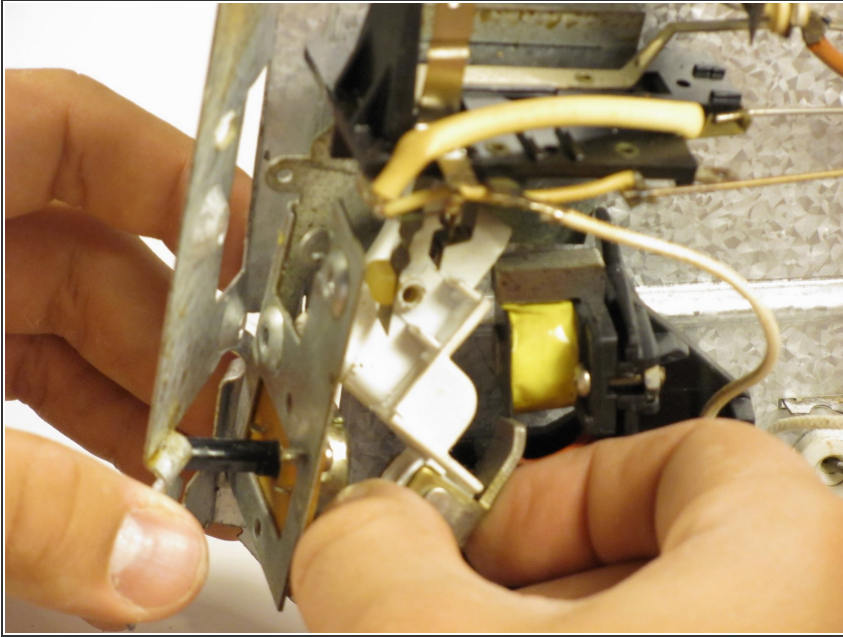
- Forcefully bend back the faceplate in order to get to the knob.

## Step 16



- Remove pin holding the On/Off switch in place.

## Step 17



- Remove switch from the opening it protrudes from.
- ⓘ This will take a little bit of manipulating but it will come out.

To reassemble your device, follow these instructions in reverse order. It will look like the faceplate is still bent out, but after you put the screws back in it will come back into place.