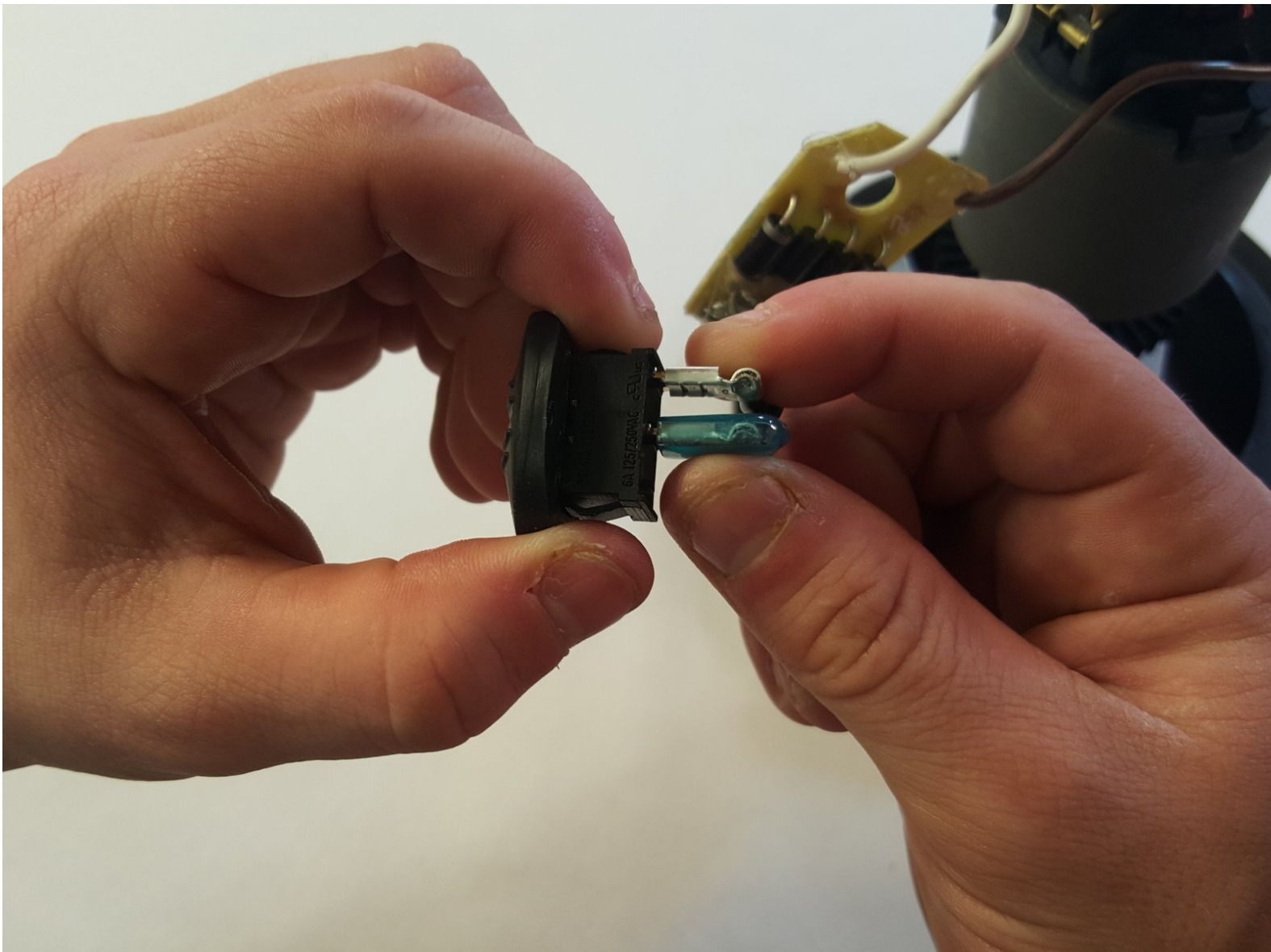




Black and Decker WP900 Power Switch Replacement

Getting no response from the on/off switch? Chances are it needs to be replaced! The following guide provides a step-by-step procedure to replacing this part.

Written By: Cameron



INTRODUCTION

This page gives instructions for disassembling the Black and Decker WP900 6-Inch Orbital Waxer and Polisher to the point where the on/off switch can be fully removed and replaced.



TOOLS:

- [iFixit Opening Tools](#) (1)
 - [Phillips #1 Screwdriver](#) (1)
 - [Flathead 3/32" or 2.5 mm Screwdriver](#) (1)
-

Step 1 — Power Switch




- Using the plastic tool, detach the handle tab as shown.

 Make sure the device is unplugged.

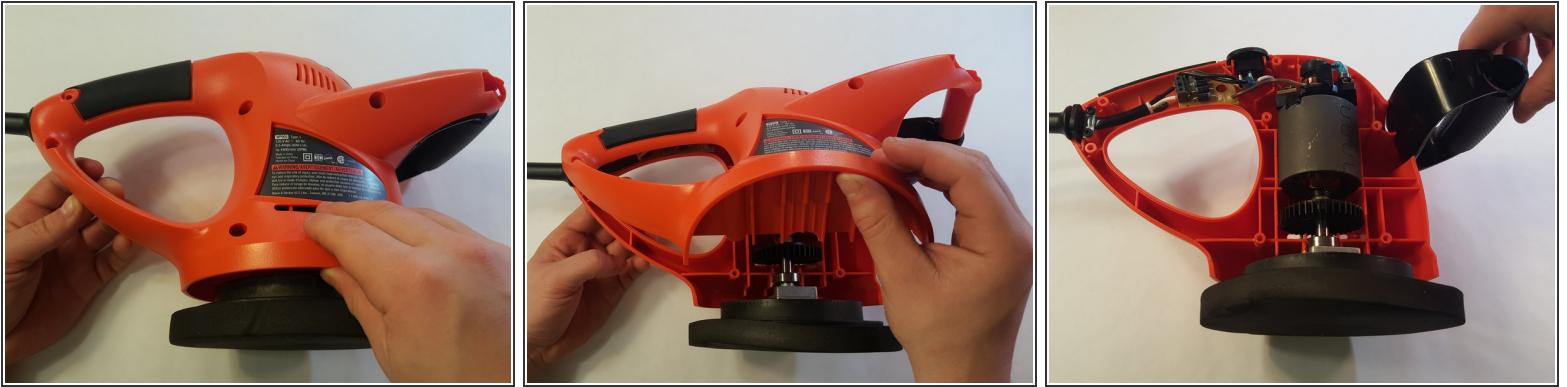
Step 2



- Using the Philips #1 screwdriver, unscrew all of the screws. There should be 8-30mm screws to remove.

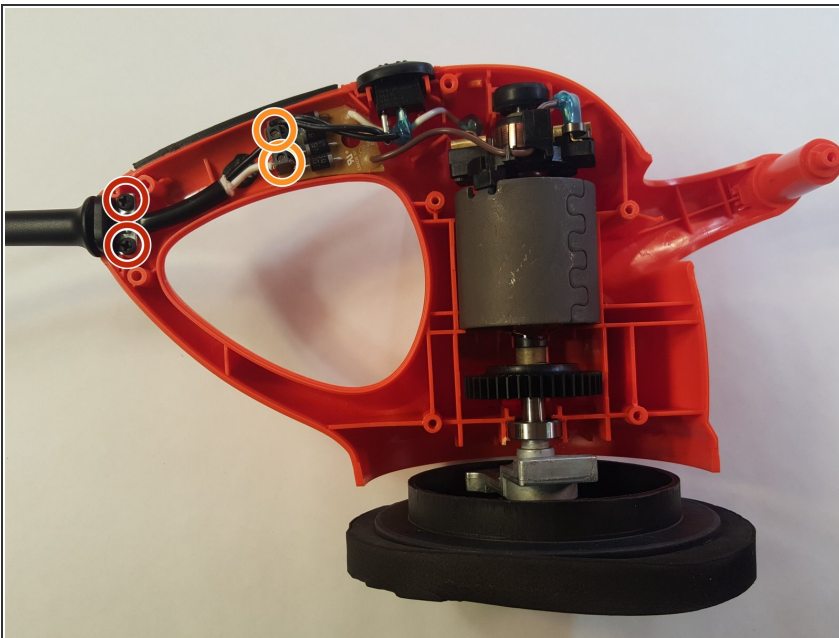
 Be sure to keep track of where each screw was placed in the device for later reassembly.

Step 3



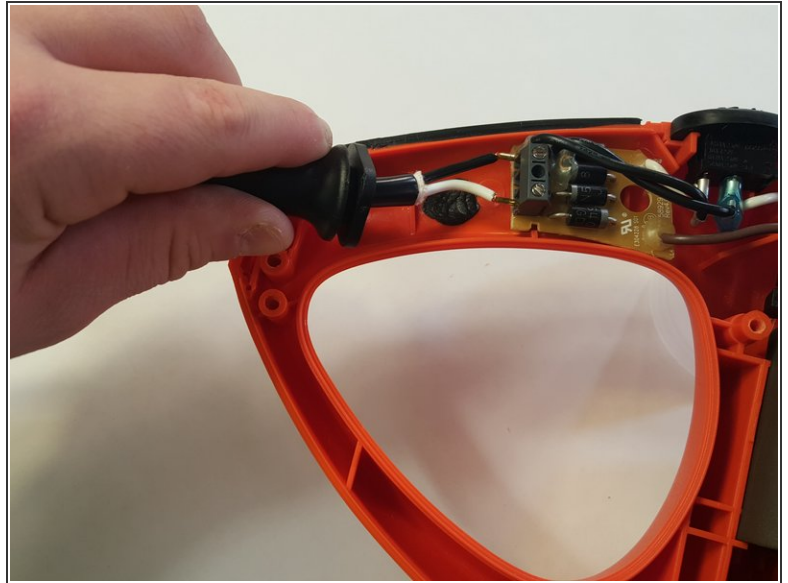
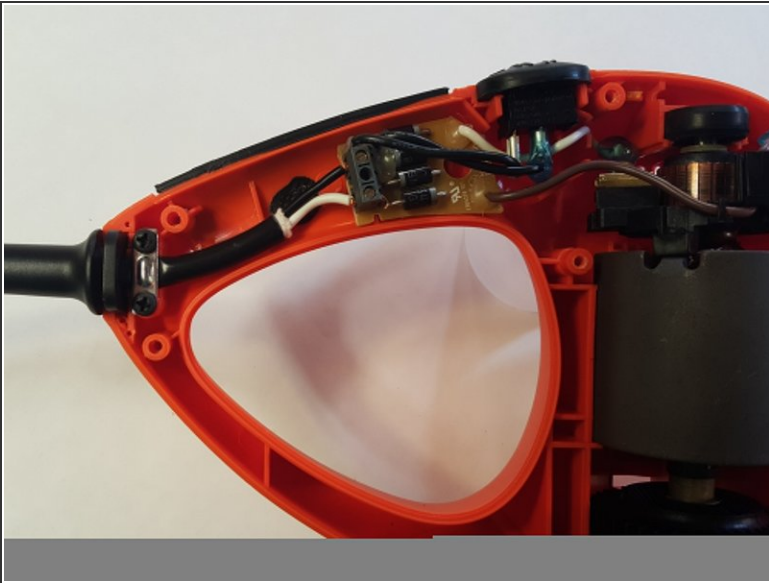
- Remove the back panel of the external casing, leaving all internal components resting in the front panel.
- Remove the black handle from the main external casing.

Step 4



- Loosen the power cord and control panel. Using the Phillip's #1 screwdriver, remove two 22mm screws.
- ⓘ The metal bracket will detach with the two screws.
- Using the Flathead 3/32" screwdriver, remove two 22mm screws.

Step 5



- Gently pull the power cord out from the control module.

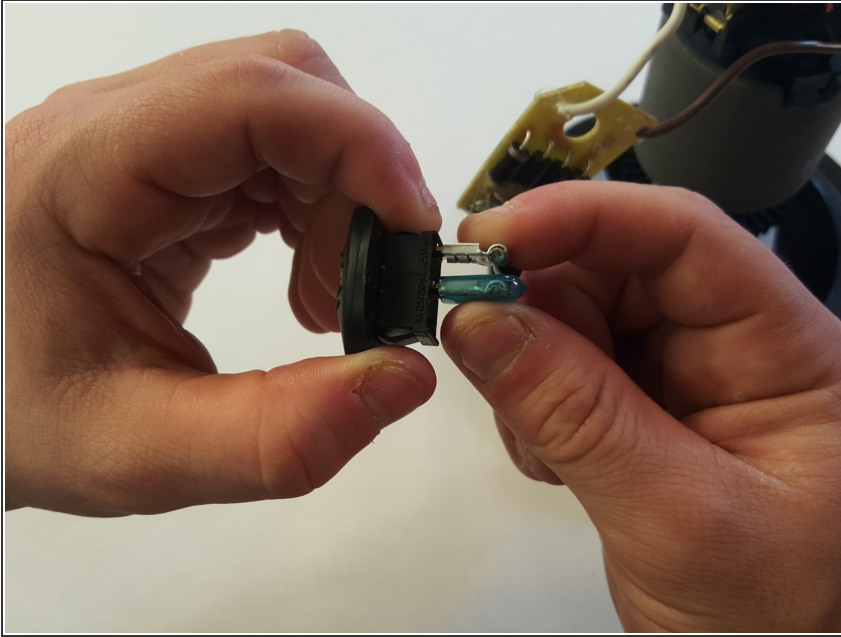
 Remember, when reassembling the device, the black wire should be on the top

Step 6



- Firmly grasping the motor, dislodge the internal components from the frontal external casing.
- ① Switch and control panel will be attached to magnet body.

Step 7



- Remove the switch from the wires.
- Gently, pull and release the two wired connections.
- ① The switch can now be replaced. Be sure not to damage the two connections to the control module in the process.

To reassemble your device, follow these instructions in reverse order.