



Black and Decker Wizard RT550 Disassembly

Disassembly and repair of the power switch on a Black and Decker Wizard RT550 rotary tool

Written By: Greg Francis



INTRODUCTION

Detailed steps to disassemble an RT550, explanation of how the sliding power switch activates the device, demonstration of how I fixed the power switch by using a piece of cardboard to slightly raise the internal power button and a few tips and warnings along the way so you can successfully reassemble.



TOOLS:

- [Phillips #1 Screwdriver](#) (1)
-

Step 1 — Black and Decker Wizard RT550 Disassembly



- Detailed steps to disassemble RT550 and correct problem with power switch. Watch it once before you attempt, there are a few tricky parts.

Step 2 — Part 2 of 6



- Work on a clean surface to avoid losing parts

Step 3 — Part 3 of 6



- Notice laying the tool flat before separating the two halves

Step 4 — Part 4 of 6



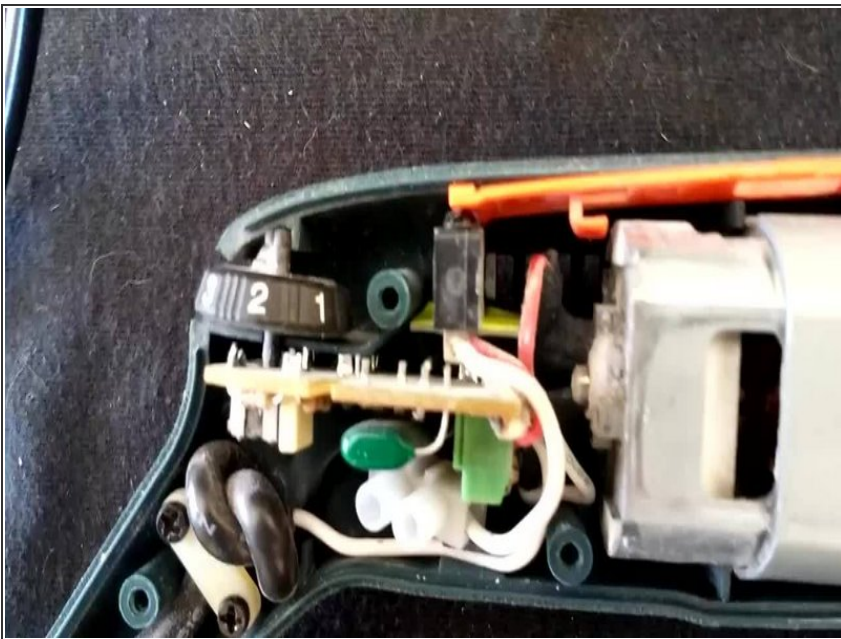
- Explanation of the sliding power switch mechanism

Step 5 — Part 5 of 6



- How I fixed the power switch not contacting the actual power button

Step 6 — Part 6 of 6



- Wrapping up, do steps in reverse to reassemble.

To reassemble your device, follow these instructions in reverse order.