



Black+Decker HSV420 batteries Replacement

Replacing batteries will give continued life to portable vacuum cleaner

Written By: Gregg Ferry



INTRODUCTION

Dust buster's have a short useful life because the batteries fail. A battery failure is exemplified by only a minute of use before the batteries need to be recharged again.



TOOLS:

- [Phillips #2 Screwdriver](#) (1)
- [Utility Scissors](#) (1)
- [Lineman pliers](#) (1)
- [Small Needle Nose Pliers](#) (1)
- [Soldering Workstation](#) (1)
- [Wire Stripper](#) (1)
- [Voltmeter](#) (1)
- [Tweezers](#) (1)



PARTS:

- [small tie wrap](#) (1)
- [Heat Shrink Tubing Assortment](#) (1)
- [Heat insensitive tape](#) (1)

Step 1 — batteries



- Remove dust collector (while you're there, clean it)

Step 2



- Remove five (5) phillips screws 003-004

Step 3



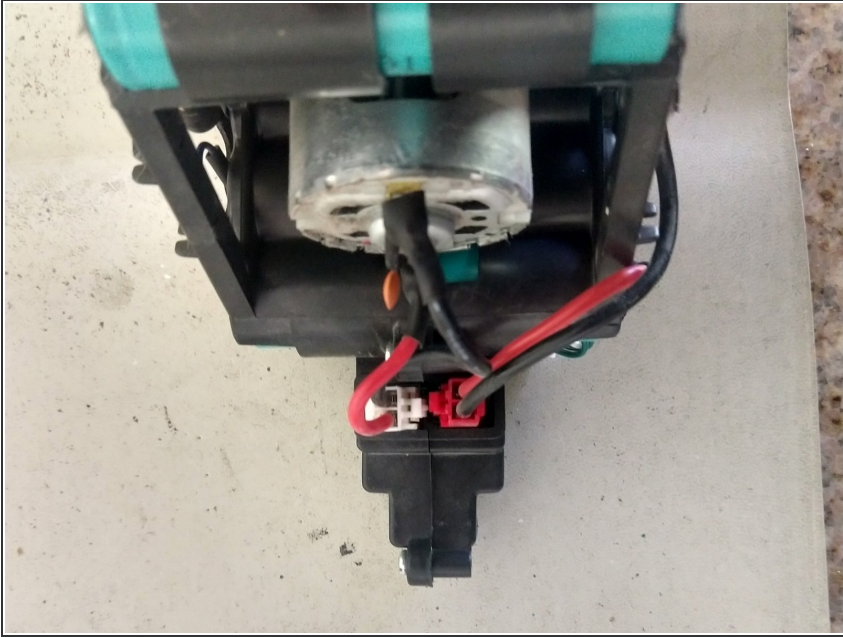
- Split case 005 and lift off 006 revealing electronics board 007

Step 4



- Clip tie-wrap 008 and disconnect small white connector from electronics board 007 (picture 008 disappeared, but the tie wrap is the only one in there)

Step 5



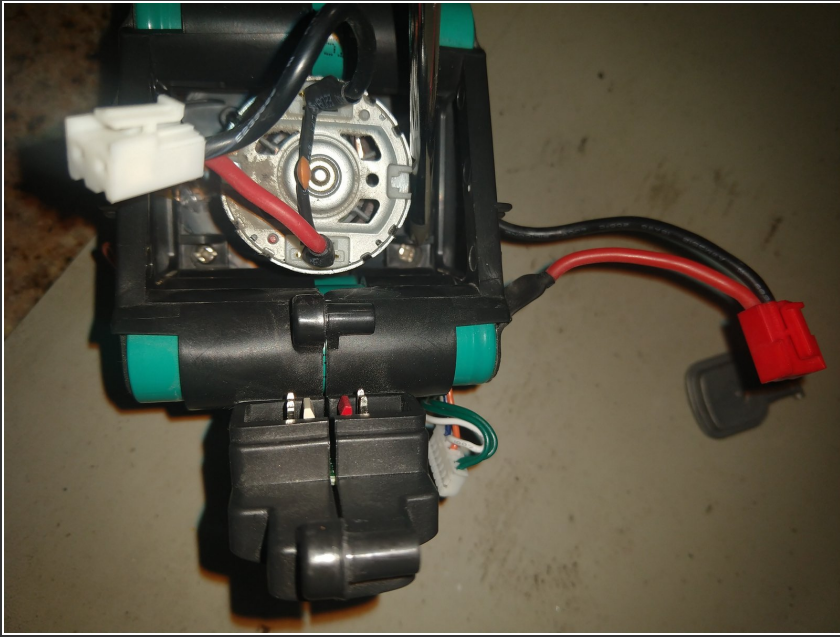
- Disconnect red battery connector and white motor connector 009

Step 6



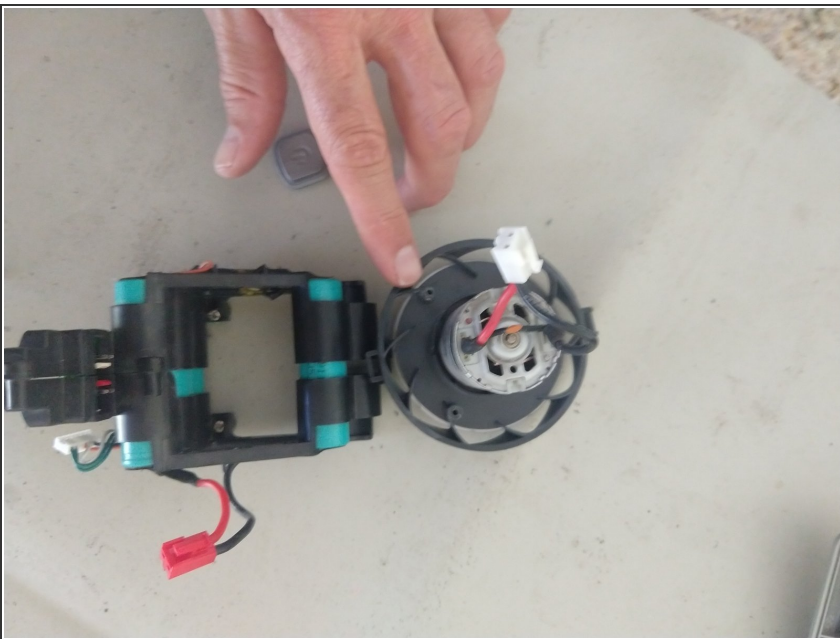
- Remove gasket and fan shield 010-011

Step 7



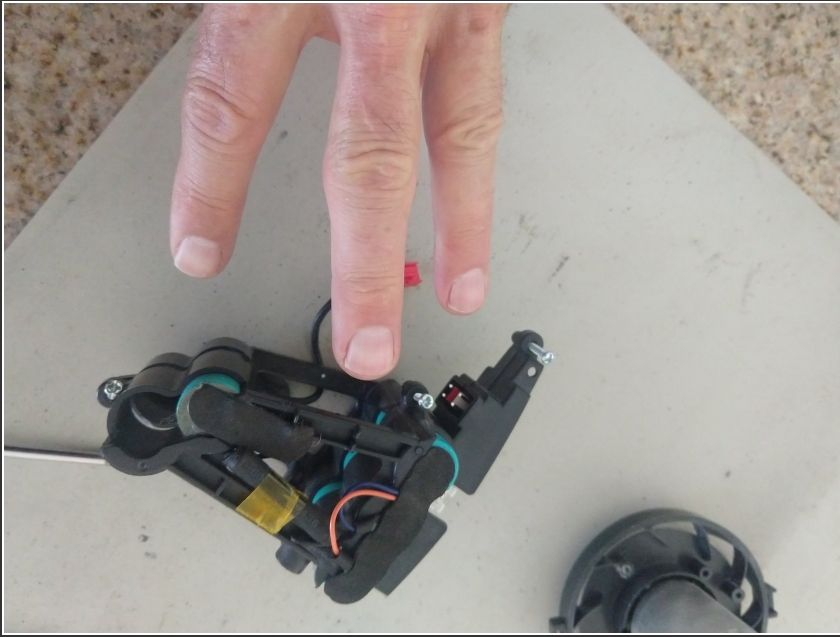
- Remove two (2) screws to remove motor 012

Step 8



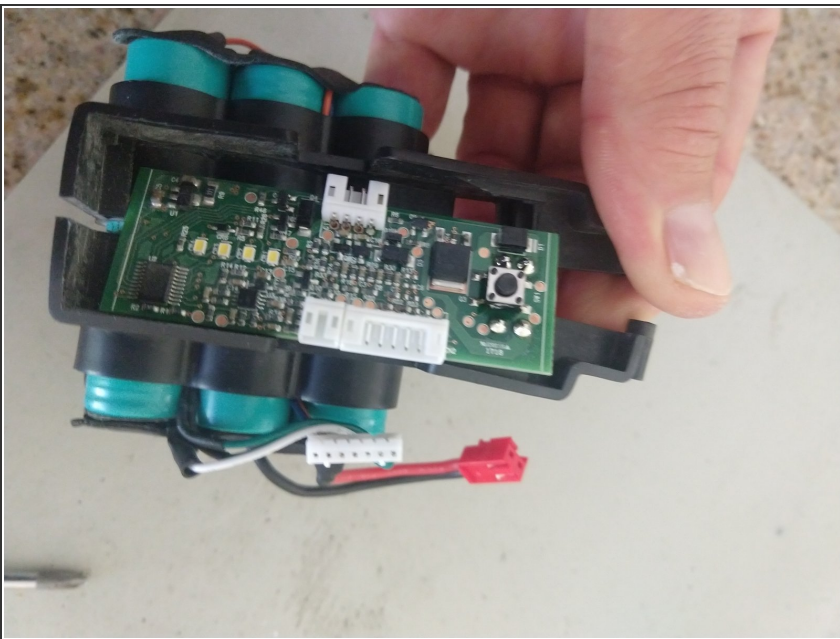
- Note the holes into which motor mount screws go 013

Step 9



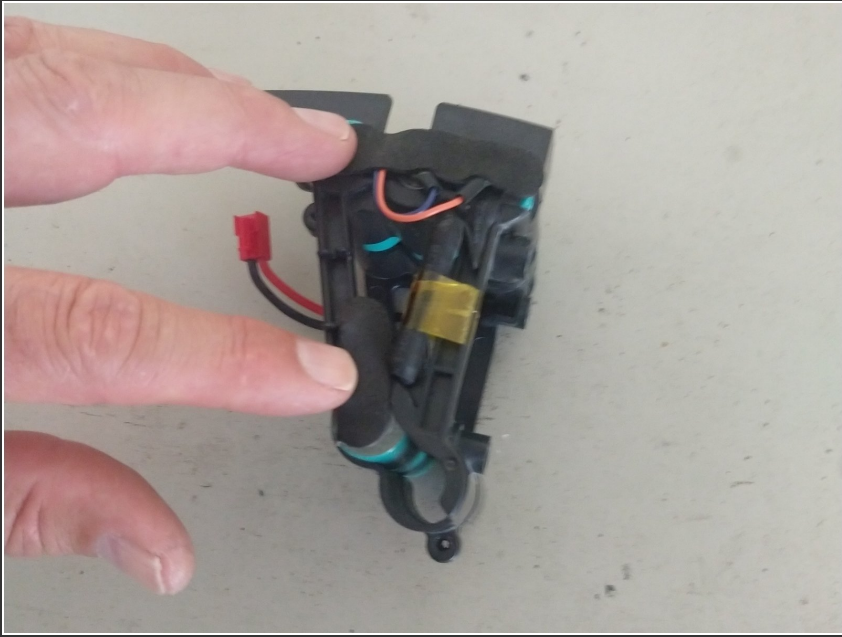
- Remove three (3) screws from the battery carrier 014

Step 10



- Disconnect the long white connector from the electronics board
- Split the carrier to remove the button the electronics board. 015

Step 11



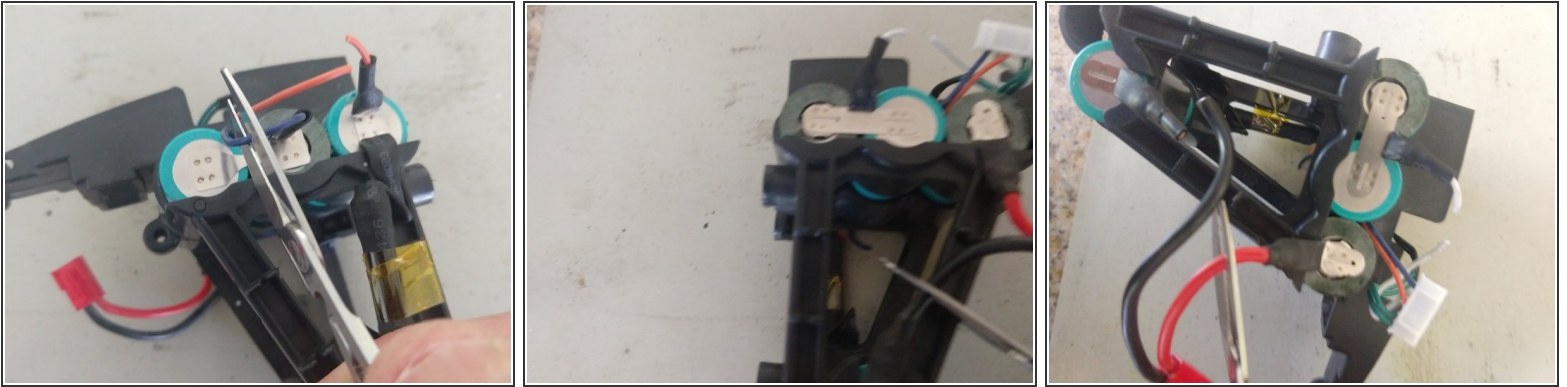
- Note locations of insulating tape and remove them, two from each side.
016 HEED WARNING ABOUT SHOCK!

Step 12



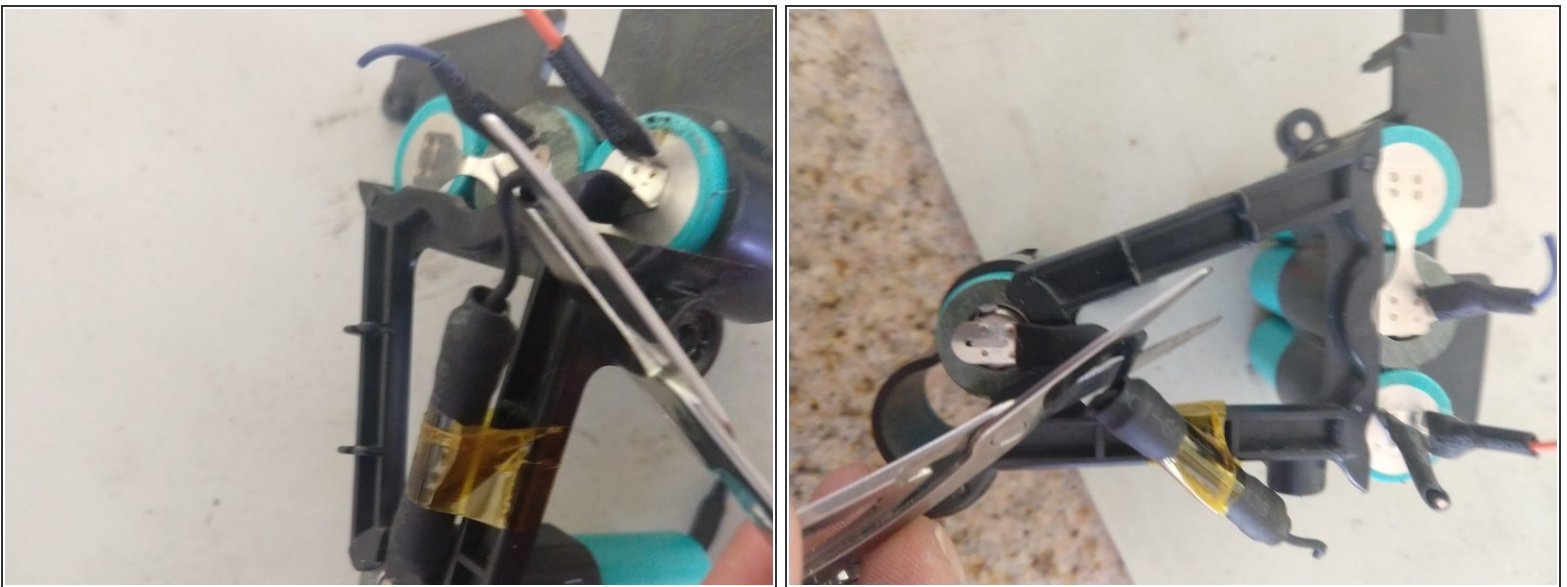
- Pull temperature probe, that is connected to two green wires, out of assembly 017

Step 13



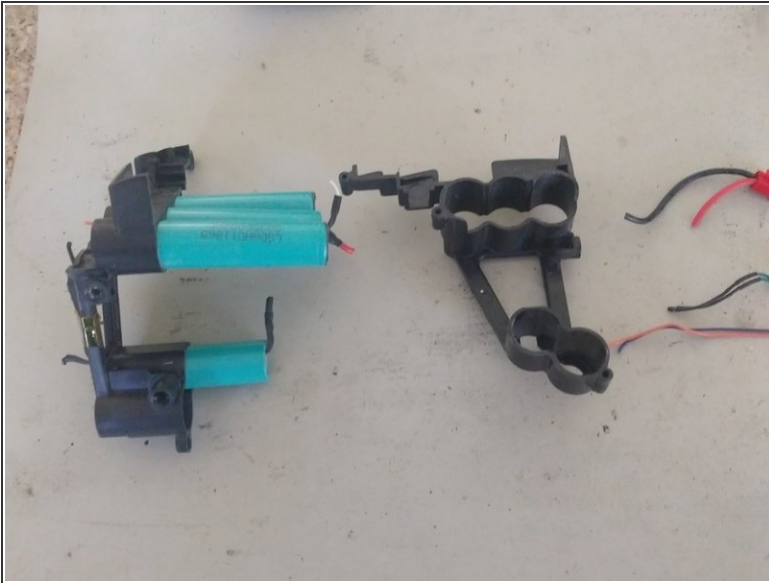
- Cut thin ORANGE wire about a cm from heat shrink. cut thin BLUE wire about a cm from heat shrink. 018 cut thin WHITE wire about a cm from heat shrink. cut thick BLACK wire about ½ cm from heat shrink. 019 cut thick RED wire about ½ cm from heat shrink. 020

Step 14



- cut thin BLACK wire from fuse next to the battery heat shrink (two places) 021-022

Step 15



- Slide the right side plastic carrier off of the batteries. 023 Note that two connectors are loose. So that you can determine the orientation of the batteries (where + or - goes) in the carrier, maintain the orientation while you slide the three batteries out of the left carrier. 024

Step 16



- Similarly, slide the one battery out of the left carrier. (note that there is an unused battery position.)
I am going to give names to the batteries:
- a Battery that is by itself. When looking from the motor, + is on the left
- b Battery closest to the motor, + is on the right
- c Battery in the middle of the three, + is on the left
- d Battery farthest from the motor, + is on the right

Step 17



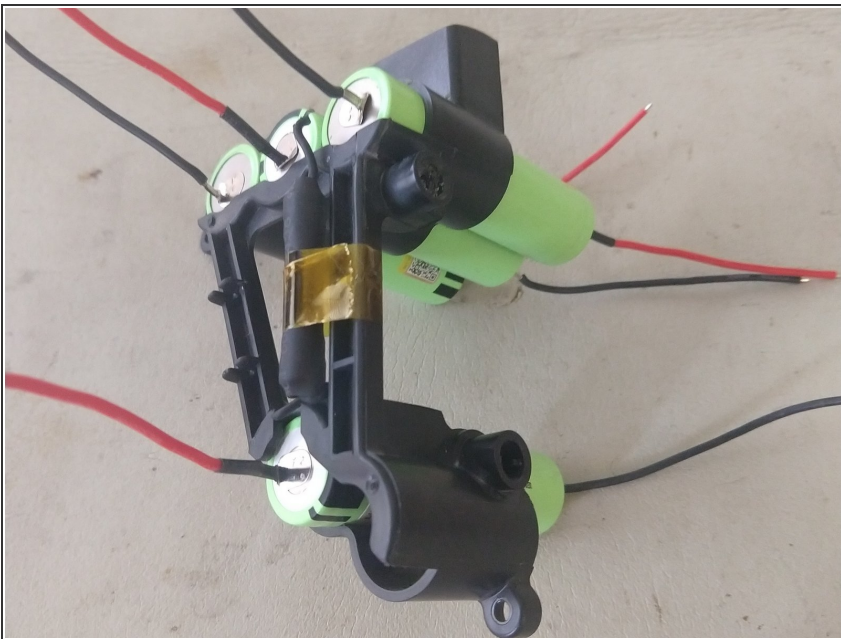
- For each battery, note which side is +, the location and where the + end goes. To ensure that you know which end is +, it is recommended that you check this with a voltmeter. And you can satisfy your curiosity about the voltage of the batteries. Sometimes are so bad they reverse polarity, but that voltage would be very low.

Step 18



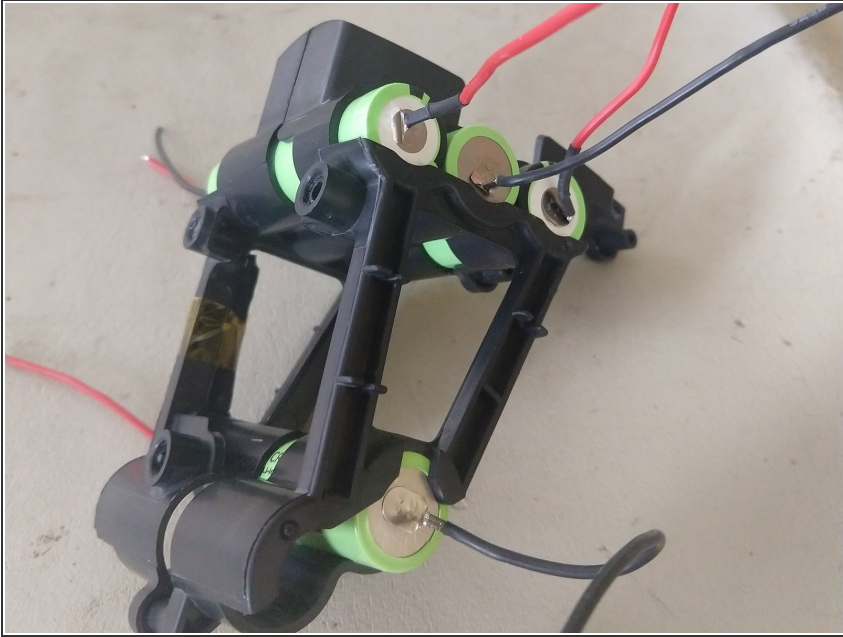
- Take the old batteries to the place where you recycle batteries. Unpack and check voltage of new batteries (NCR 18650B, 3.6V, 3000mAh, welded on leads, voltage less than 3V probably indicates a bad battery) 025-026

Step 19



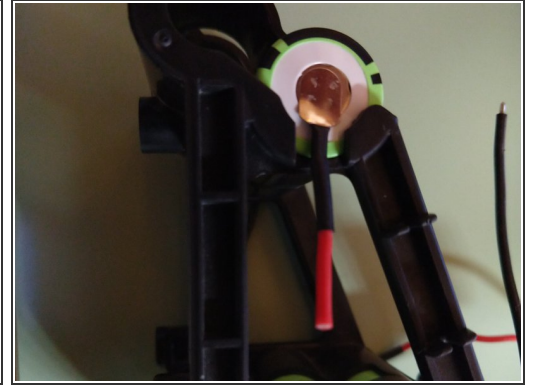
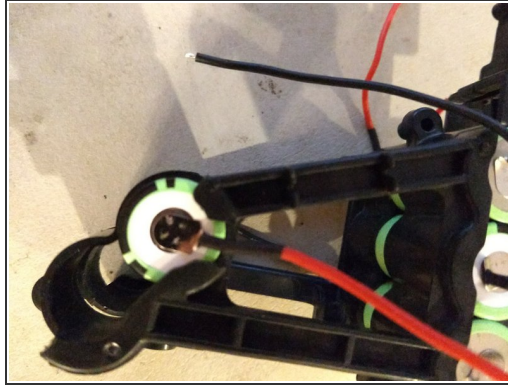
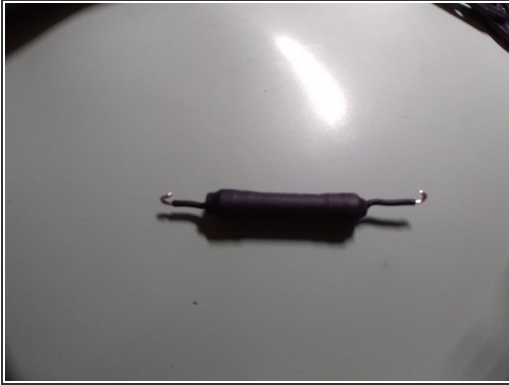
- Put the new batteries into the left half of the carrier, ensuring the + of the battery is in the same direction as its predecessor. 027

Step 20



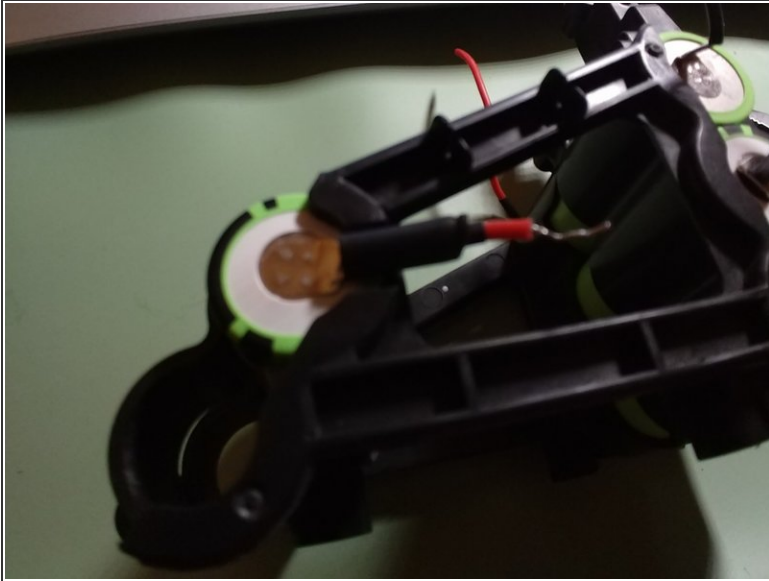
- Put the right half of the carrier over the batteries and slide into place. Do not put in the screws, yet, you still need to put in the button and the electronics. 028

Step 21



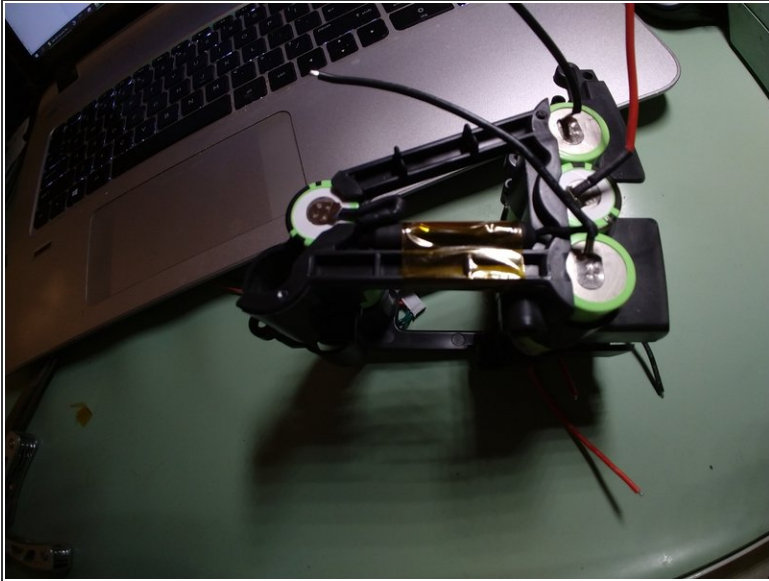
- Connecting the fuse. The fuse is between + “a. Battery” and - “b. Battery” and should still be on the left carrier.
- Very carefully peel off the tape that holds the fuse to the left carrier with the hope it can be reused. The purpose of the tape is to keep the fuse from rattling. Not so much as to reduce noise, but to prevent the connection from breaking
- Strip about 1cm of heat shrink from each lead of the fuse
- Make a U-bend at the end of each fuse lead 029
- Ensure that the + lead of “a. Battery” will bend into the gap (see picture 030) This would be a good time to ensure that all of the other batteries.
- “b. Battery” lead points to “c. Battery” “c. Battery” lead points to “d. Battery” “d. Battery” lead points to “c. Battery”
- Cut red + lead of “a. Battery” leaving about 4cm. 031 Strip 1cm from lead. Tin lead

Step 22



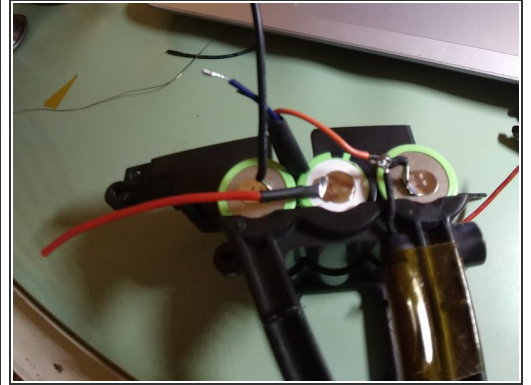
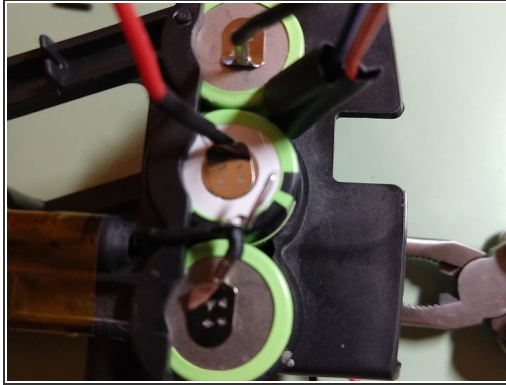
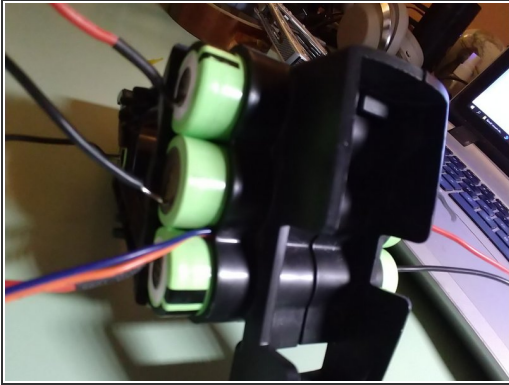
- connecting fuse, continued
- Put about 1cm of heat shrink over the lead and push it near to the battery 032
- Wrap the tinned lead 360° around the U in the fuse lead. This is a one shot deal: Using the linemen's pliers, crimp the U bend tight. The lead wire from the battery should not move. Solder the joint. Do not dwell with the soldering iron on the connection! 033
- Slide the heat shrink over the joint and shrink it with heat (I used the soldering iron)

Step 23



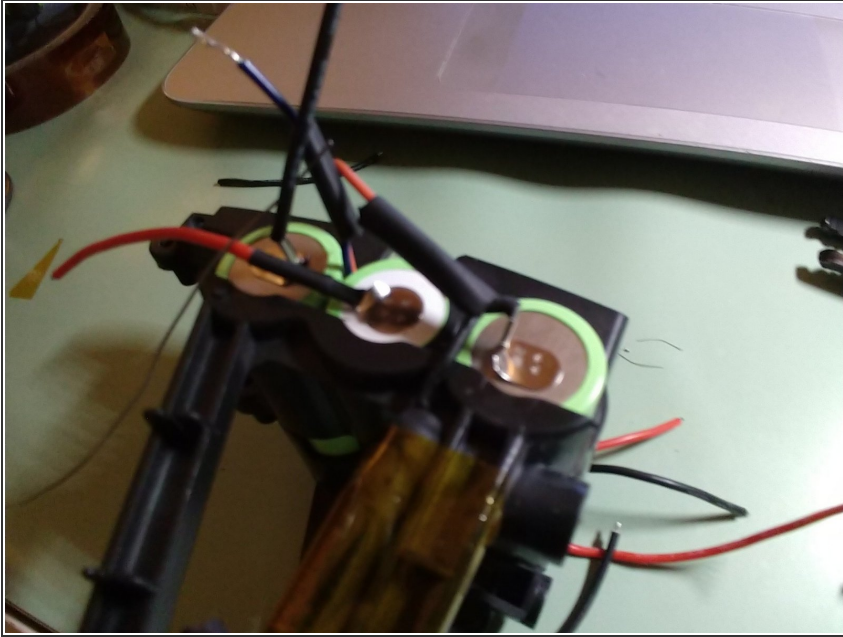
- This is probably a good time to secure the fuse to the carrier. 034-035

Step 24



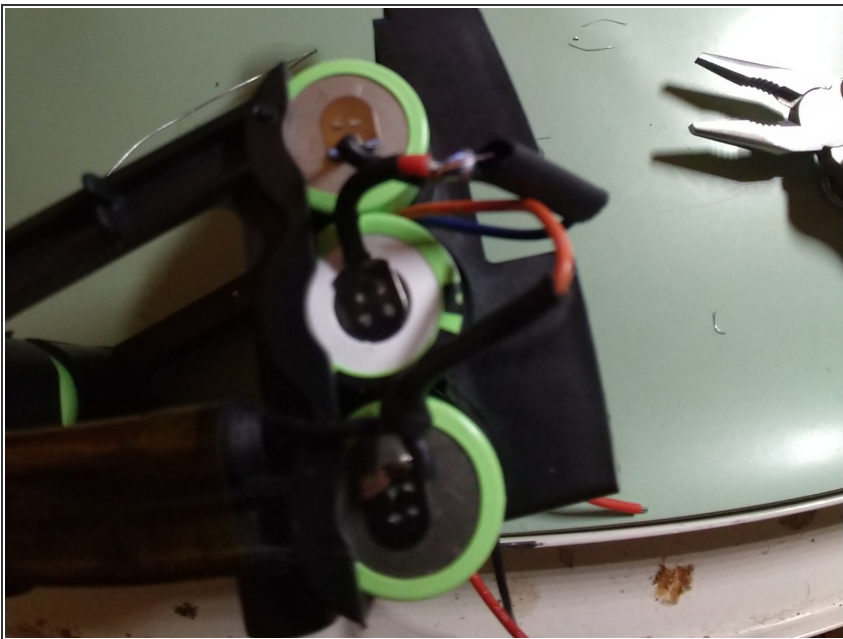
- The orange wire needs to connect the the - of “b.Battery”, too. Push the thin blue and thin orange wire through the carrier. This is a good time to push the temperature sensor on the green wires into the carrier.
- Trim and tin both the orange and blue wires Put a 2cm length of heat shrink over each of the orange and blue wires. Cut the - lead of the “b. Battery” leaving about 3cm
- Strip 2cm of the lead and tin. Wrap the tinned lead 360° around the fuse lead, leaving a bit for the orange wire. Crimp the fuse lead Create a U on the “bit” of lead. Create a U on the orange wire Loop the U’s together, crimp with needle nose pliers and solder both joints, remembering not to dwell on the fuse lead 038

Step 25



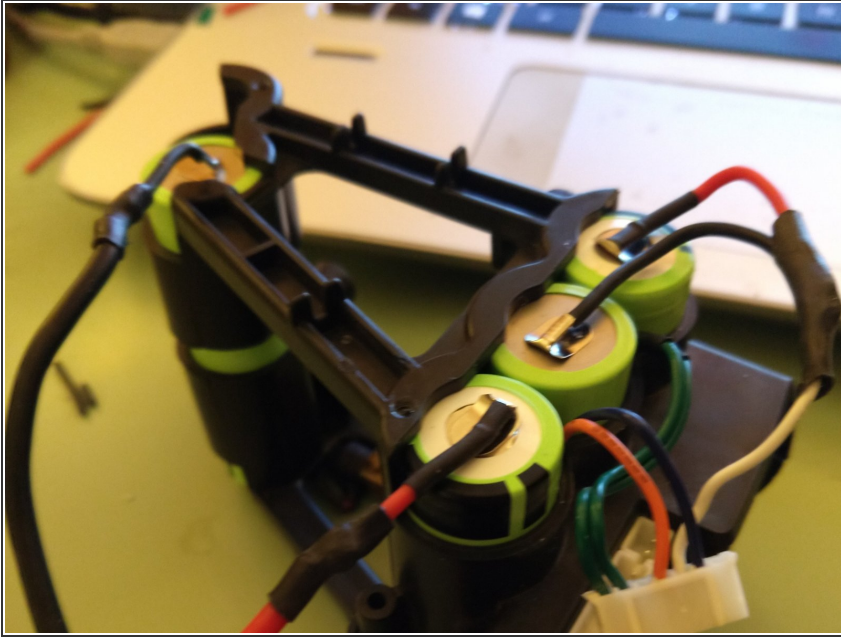
- Slip the heat shrink, as best you can, over both joints and shrink 039

Step 26



- Solder + “c. Battery”, - “d. Battery” and thin blue wire Cut the leads of the battery wires to about 3cm , strip about ½ cm, twist together and tin.. Make a U in this joint and in the blue wire, loop U's together, crimp with needle nose pliers, solder joint. Slip heat shrink over solder joint and shrink 040

Step 27



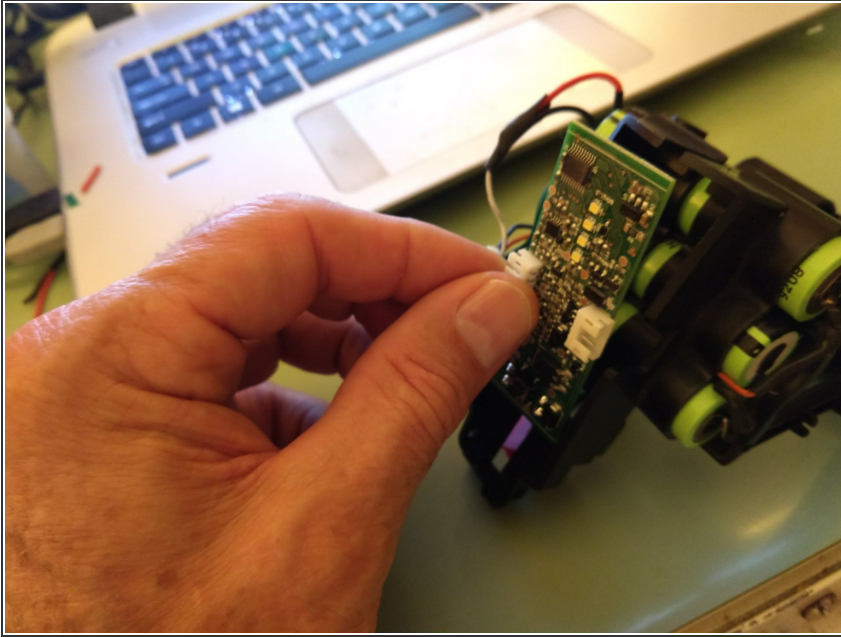
- Solder + “b. Battery”, - “c. Battery” and thin white wire Similar to previous, but make battery leads 5cm 041

Step 28



- Solder the battery connector red to + “d. Battery” and black to - “a.Battery” leads Cut battery leads to 3cm Each lead, trim, tin, 1.5cm heat shrink, loop, crimp, solder, slide heat shrink, shrink 041 Replace insulators over battery ends

Step 29



- REASSEMBLY -- You're now dealing with a ~15VDC battery pack! If shorted, it will do serious damage or catch afire!
- Split battery carrier slightly and slip in electronics board 042 Align button and squeeze together battery carrier. Screw battery carrier together with three (3) screws Attach motor with two (2) screws

Step 30



- Connect long thin white connector to electronics board (it is keyed, DO NOT FORCE IT!) Connect motor wires to electronics board, white connector, keyed, tab towards center CAREFUL, MOTOR MIGHT START Judiciously hold the assembly while making the connection. Connect battery wires to electronics board, red, keyed tab towards center.

Step 31



- Test Hold sides of assembly, Be prepared for fan to start Press on button, fan should spin Press again to turn off. If these steps don't happen, you did something wrong and your device is probably bricked.

Step 32



- Replace fan shield, large boss (as opposed the the small boss) away from electronics board
Replace gasket Connect the white connector from the housing to the electronics board.
- Place assembly into housing. This gets a little tricky as it does not have a solid fit. Basically, the large square boss, away from the electronics board, that is part of the gasket goes into a receiving cavity in the housing. Place the cover and secure with five (5) screws.

It worked for me. Just waiting for the 6 hour charge of new batteries