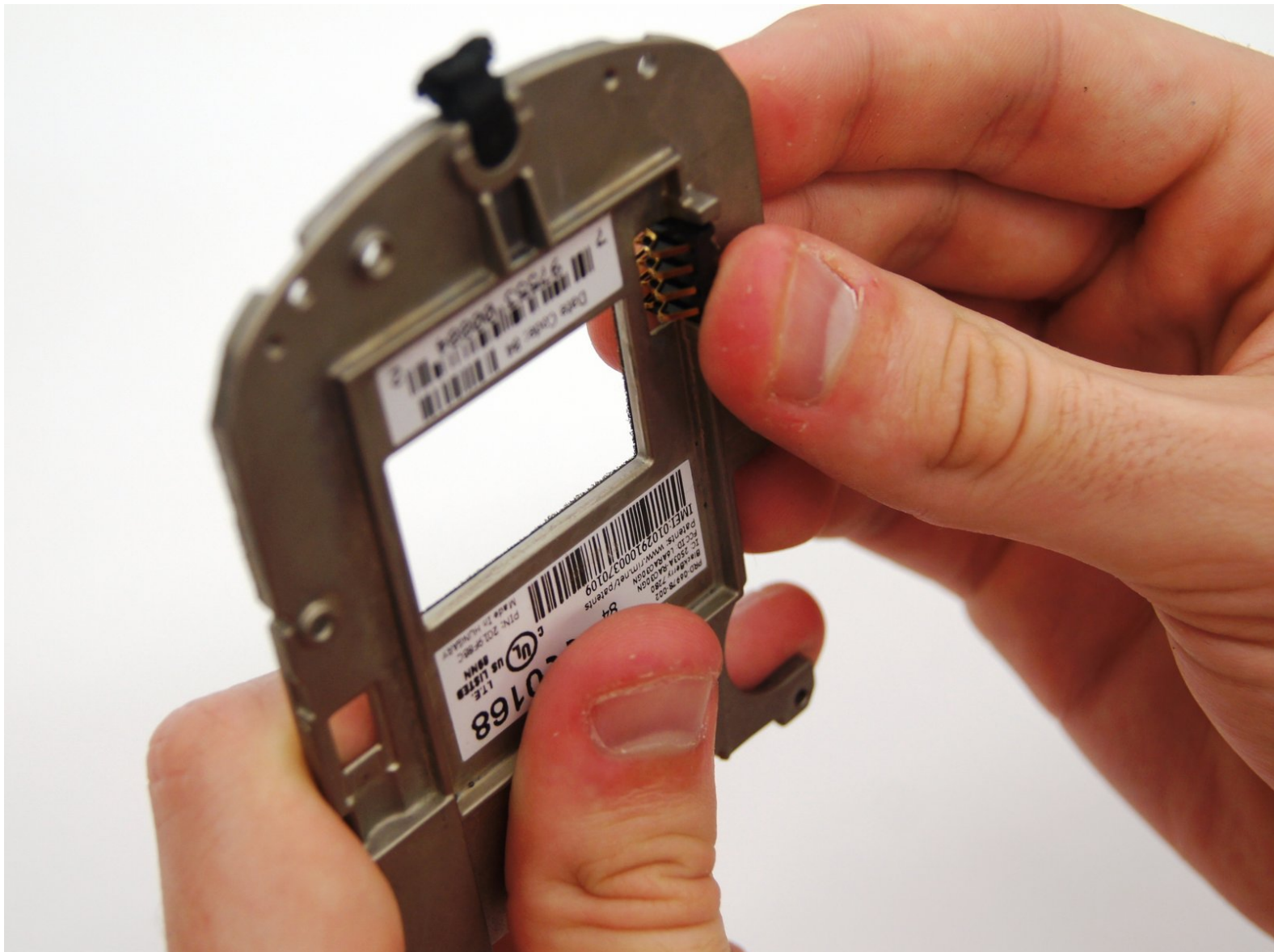




# BlackBerry 7280 Battery Connector Replacement

This guide will allow the user to replace the part that connects the battery to the logic board.

Written By: Andrew Catlin



---

## INTRODUCTION

The battery connector connects the battery to the logic board. This part could be the cause of battery issues. This guide will demonstrate how to replace the battery connector after the logic board has been removed.



### TOOLS:

- [T6 Torx Screwdriver](#) (1)
  - [iFixit Opening Tools](#) (1)
-

## Step 1 — Battery



- With your thumb press down on the locking- button on the back of the BlackBerry 7280.
- Slide the battery cover off the device.

## Step 2



- Remove the lithium-ion battery from the back of the device using your index finger.



### Step 3 — SIM Card



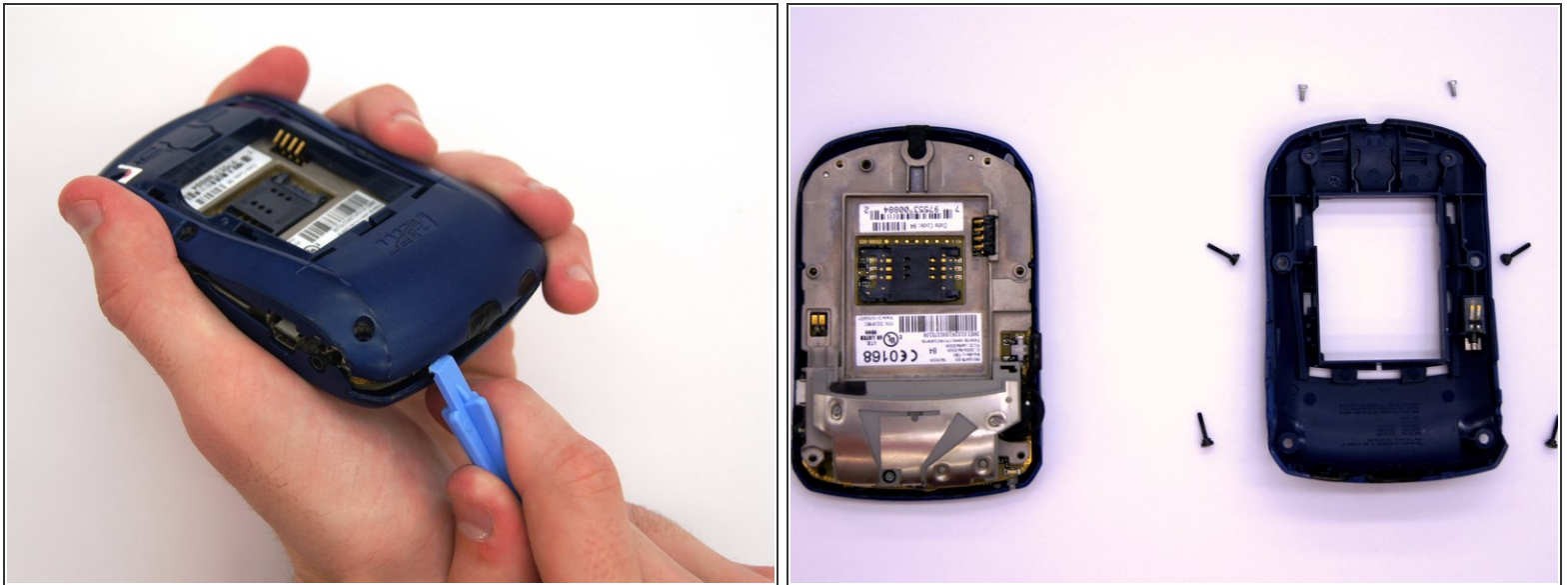
- Hold the device with both hands.
- Lift the SIM card holder using your thumb and index finger.
- Remove the SIM card from the device.

### Step 4 — Back Case



- Using a Torx T6 screwdriver, remove all six 1/8 inch screws (marked in red) from the back case. Set screws aside.
- ⓘ The SIM card has been removed here to prevent damage to the card. This is recommended, but not not required.

## Step 5



- Use the plastic opening tool to pry the back case away from the front case.

## Step 6 — Front Case



- Using a Torx T6 screwdriver, remove the lone 1/8 inch screw that holds the upper metal bracket onto the larger metal bracket. Set aside the screw and the bracket.

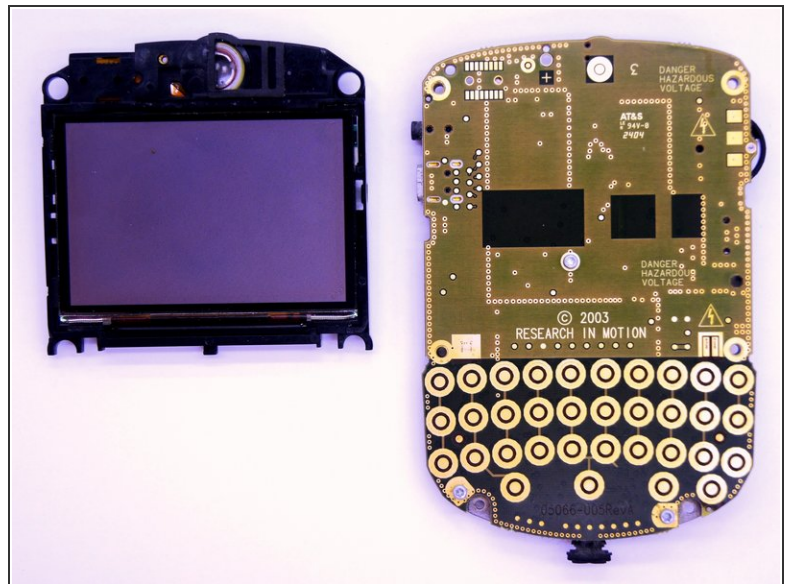
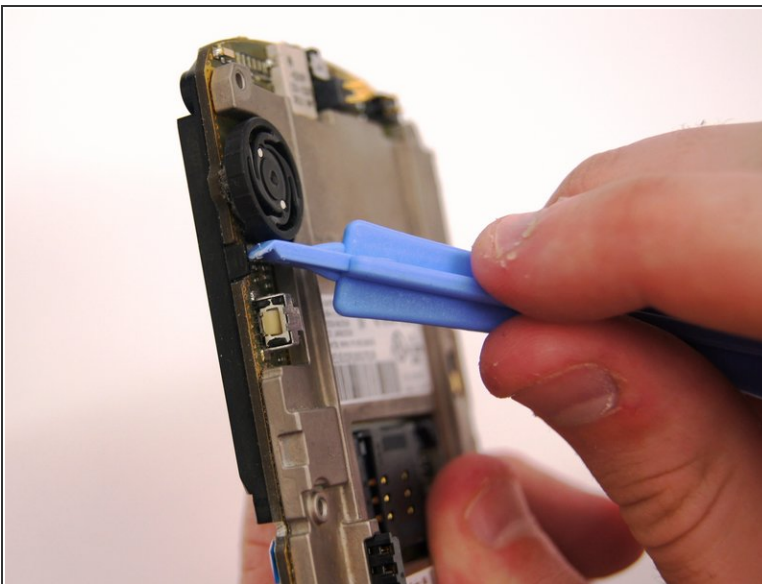


## Step 7



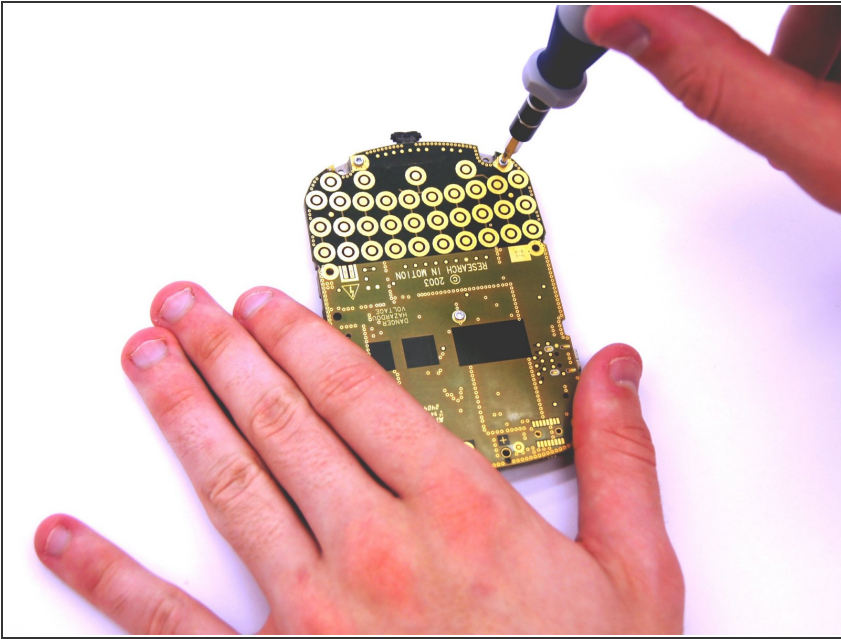
- Remove the front plastic case from the metal bracket.

## Step 8 — LCD Screen and Speaker



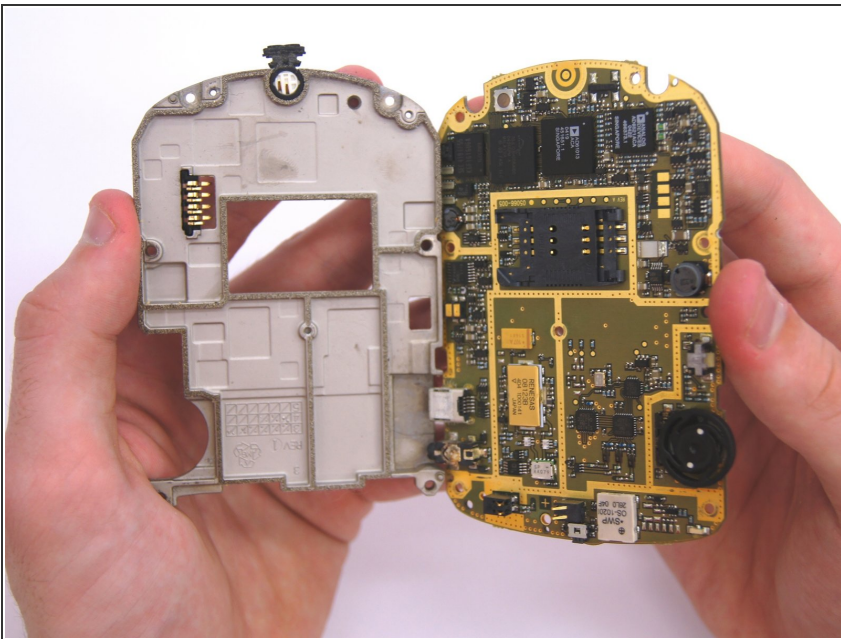
- Use the plastic opening tool to pry at the edge of the screen near the track-wheel.

## Step 9 — Logic Board



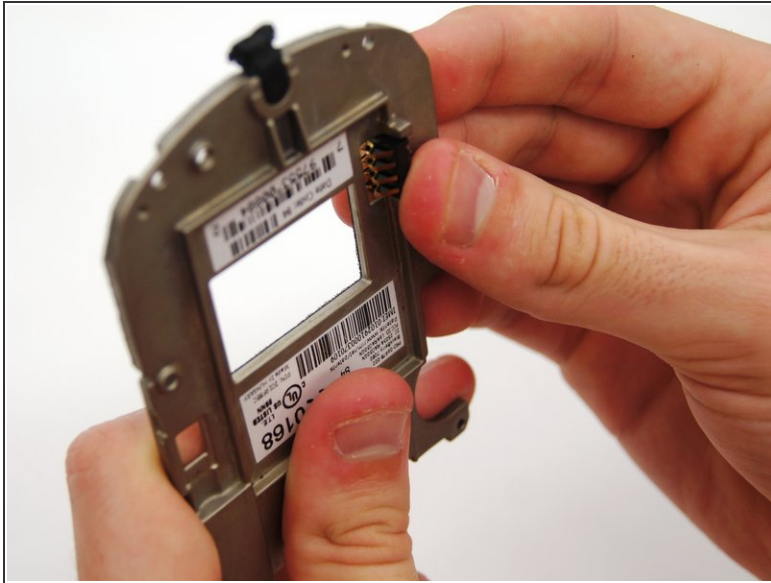
- Use a Torx T6 screwdriver to remove the 3 1/8 inch screws shown.

## Step 10



- Remove the logic board with your hands.

## Step 11 — Battery Connector



- To remove the battery connector simply slide it out from the metal bracket using your hand.

To reassemble your device, follow these instructions in reverse order.