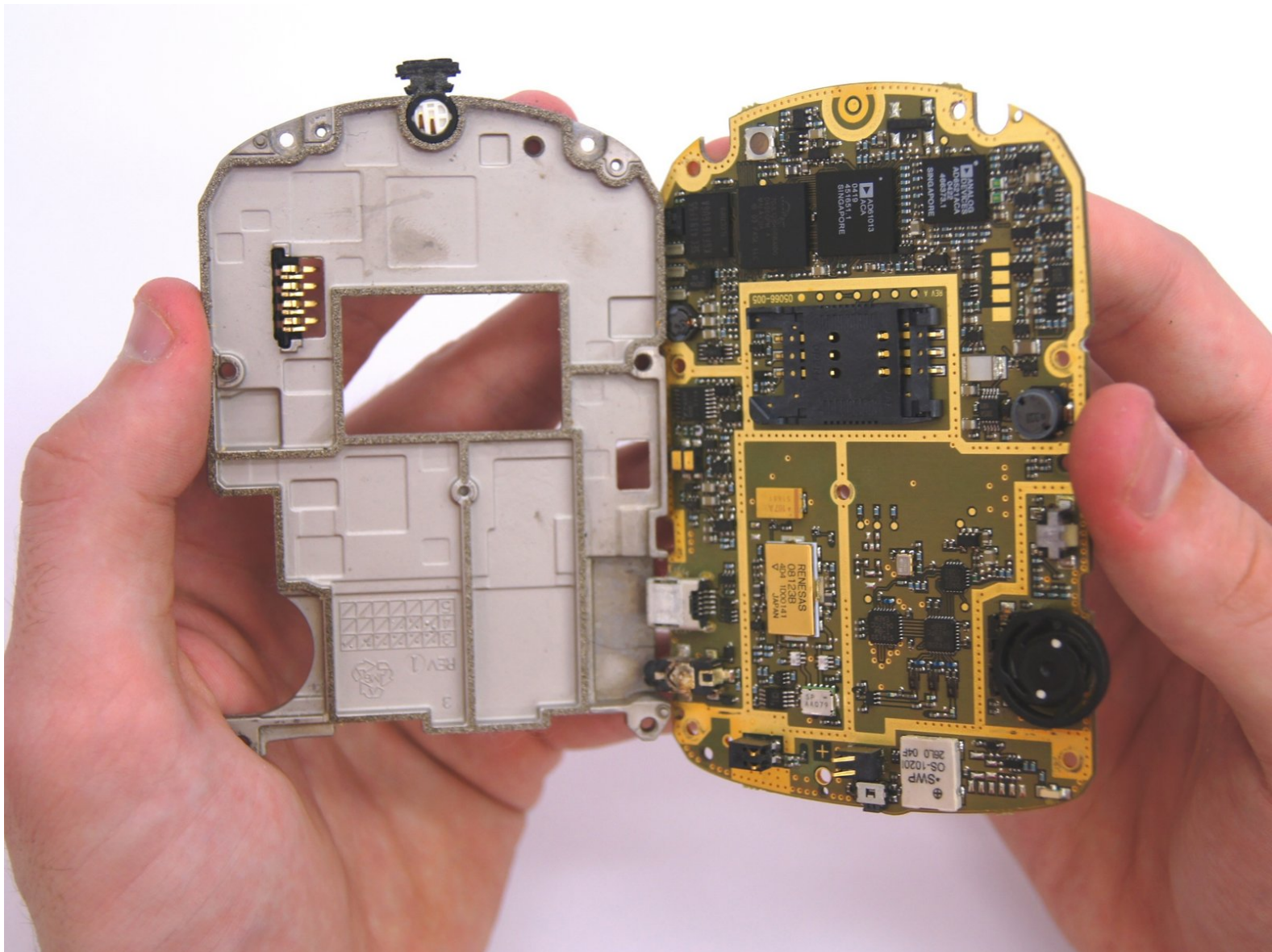




BlackBerry 7280 Logic Board Replacement

This guide will demonstrate to a user how to remove the logic board.

Written By: Sarah Waddill



INTRODUCTION

The logic board is the computational center of the phone. The logic board also contains the USB port, headphone jack, and the track-wheel. This guide will demonstrate how to remove the logic board from the bracket once the phone is opened.



TOOLS:

- [T6 Torx Screwdriver](#) (1)
 - [iFixit Opening Tools](#) (1)
-

Step 1 — Battery



- With your thumb press down on the locking- button on the back of the BlackBerry 7280.
- Slide the battery cover off the device.

Step 2



- Remove the lithium-ion battery from the back of the device using your index finger.

Step 3 — SIM Card



- Hold the device with both hands.
- Lift the SIM card holder using your thumb and index finger.
- Remove the SIM card from the device.

Step 4 — Back Case



- Using a Torx T6 screwdriver, remove all six 1/8 inch screws (marked in red) from the back case. Set screws aside.
- ⓘ The SIM card has been removed here to prevent damage to the card. This is recommended, but not not required.

Step 5



- Use the plastic opening tool to pry the back case away from the front case.

Step 6 — Front Case



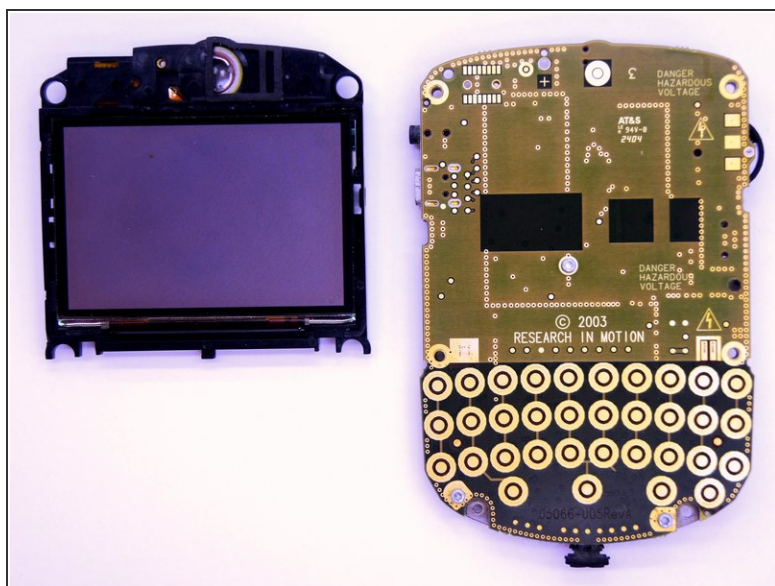
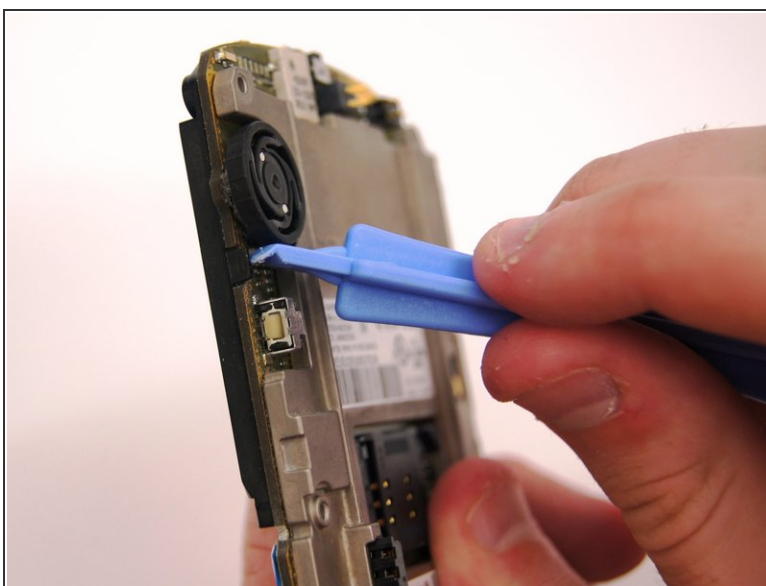
- Using a Torx T6 screwdriver, remove the lone 1/8 inch screw that holds the upper metal bracket onto the larger metal bracket. Set aside the screw and the bracket.

Step 7



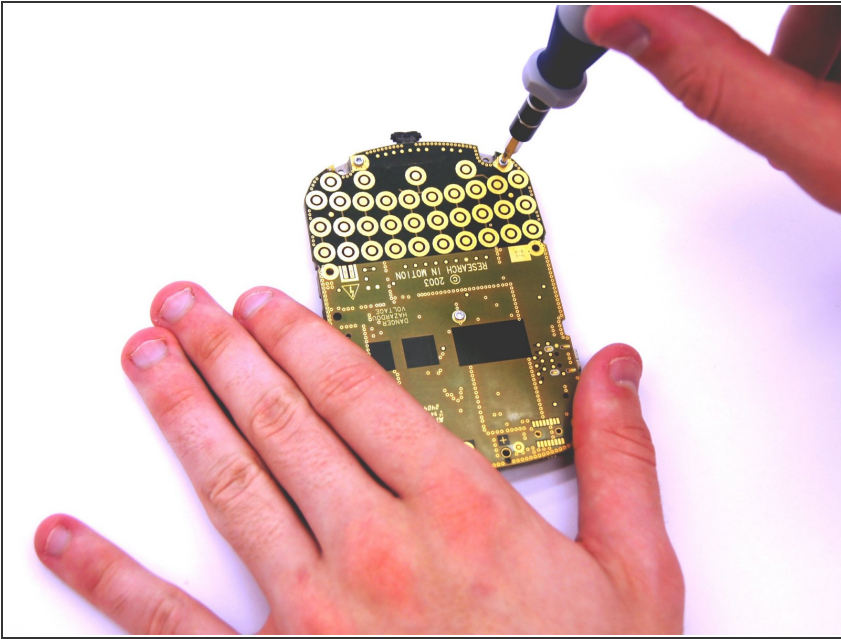
- Remove the front plastic case from the metal bracket.

Step 8 — LCD Screen and Speaker



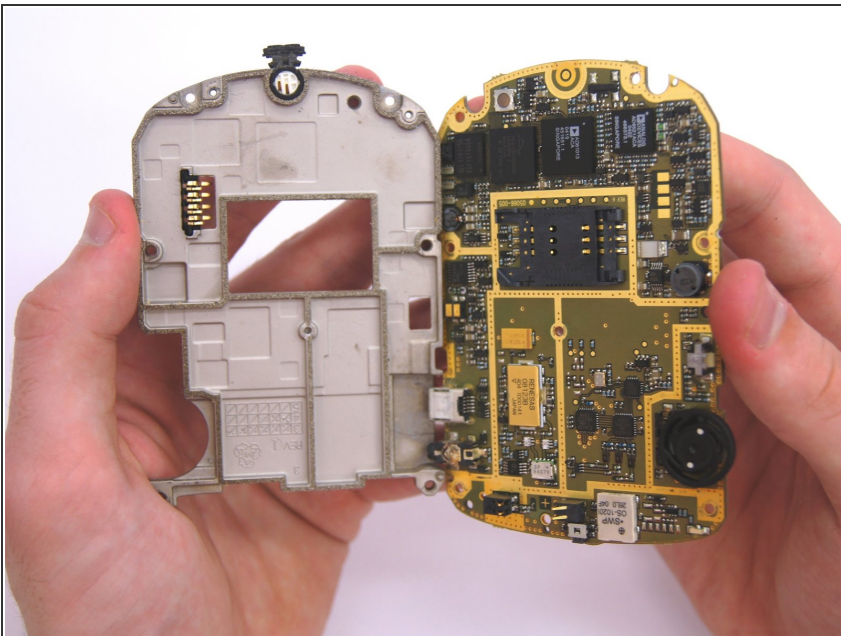
- Use the plastic opening tool to pry at the edge of the screen near the track-wheel.

Step 9 — Logic Board



- Use a Torx T6 screwdriver to remove the 3 1/8 inch screws shown.

Step 10



- Remove the logic board with your hands.

To reassemble your device, follow these instructions in reverse order.