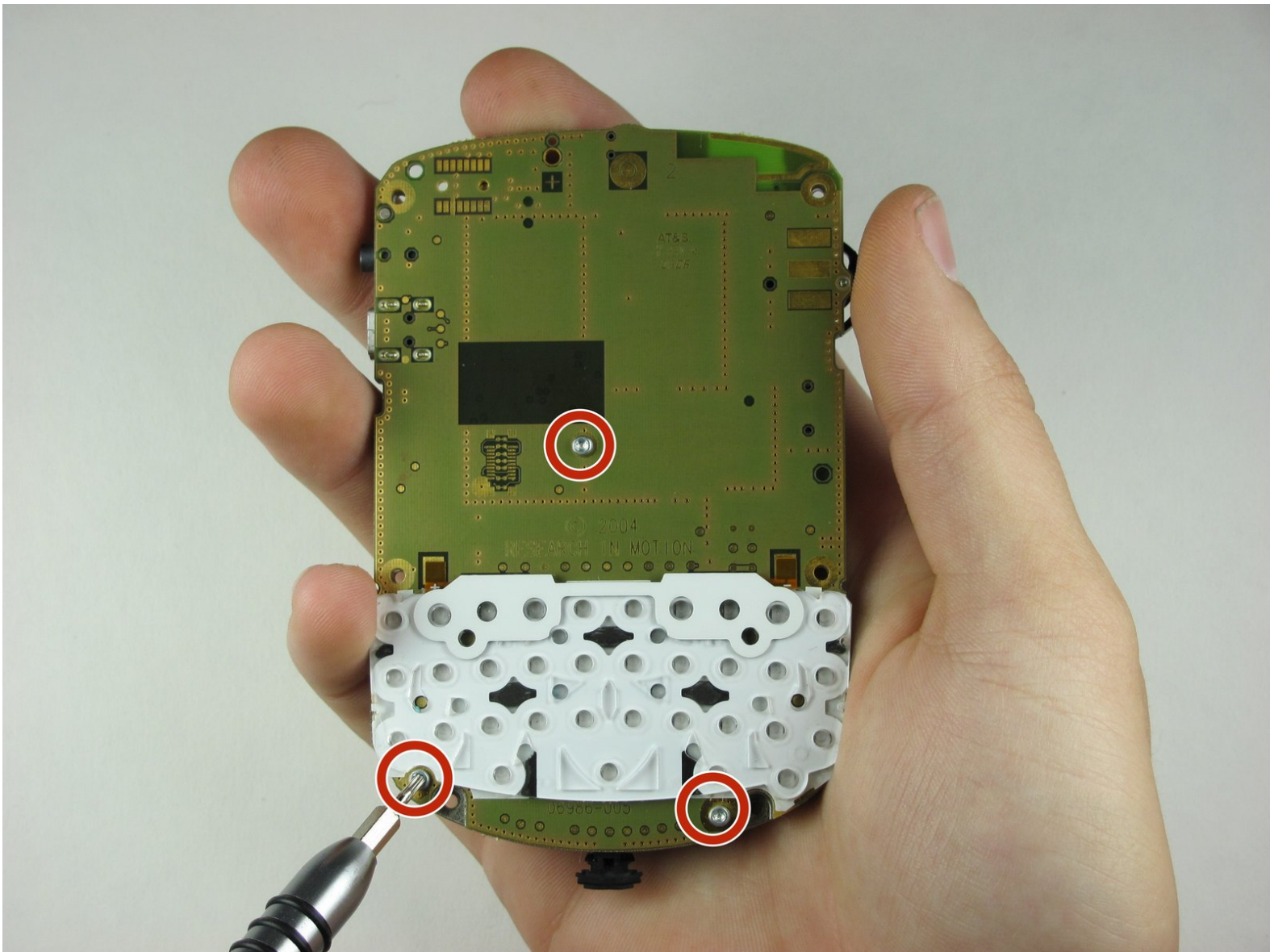




BlackBerry 7290 Motherboard Replacement

Replace the motherboard of your BlackBerry 7290.

Written By: kmathew



INTRODUCTION

Use this guide to replace the motherboard on your RIM BlackBerry 7290.



TOOLS:

- [Fingers](#) (1)
 - [T6 Torx Screwdriver](#) (1)
 - [iFixit Opening Tools](#) (1)
-

Step 1 — Battery



- Apply pressure to the lock button on the back of the device.
- Slide the battery cover down towards the bottom of the device, revealing the battery compartment.

Step 2



- Locate groove along the right side of the battery compartment.
- Remove battery by prying between the battery and the groove.

Step 3 — SIM Card



- Slide the SIM card holder to the left to unlock the SIM card.

Step 4



- Lift the SIM card holder up.
- Gently remove the SIM card from the SIM card holder by sliding the card along the railing.

Step 5 — Side Button



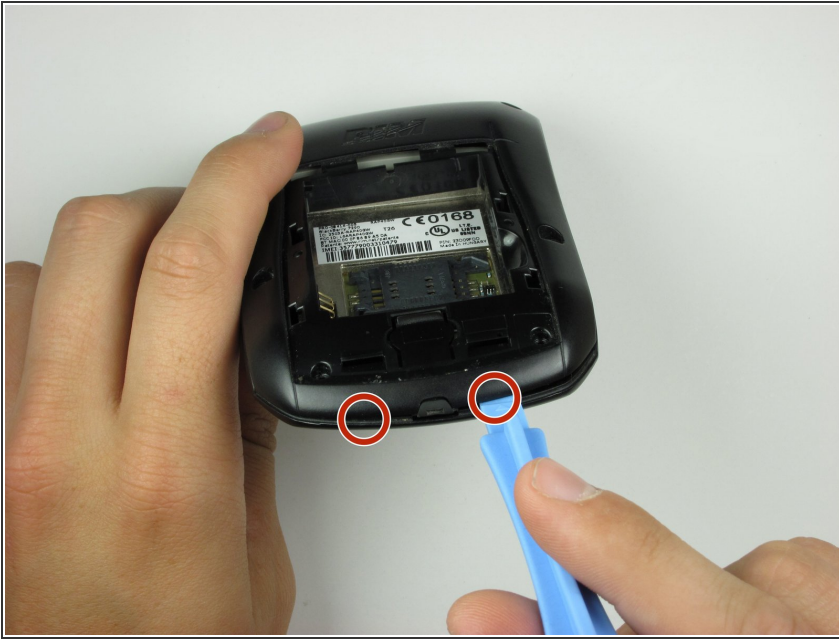
- Locate the four screws along the perimeter of the back casing.
- Remove the four top screws using a T-6 torx screwdriver.
- ❗ The top four screws are .413 inches.

Step 6



- Locate two screws within the lower edge of the inner compartment.
- Remove the two bottom screws using a T-6 torx screwdriver.
- i* The bottom two screws are .2 inches in length.
- i* The second picture displays the device after the six screws have been removed.

Step 7



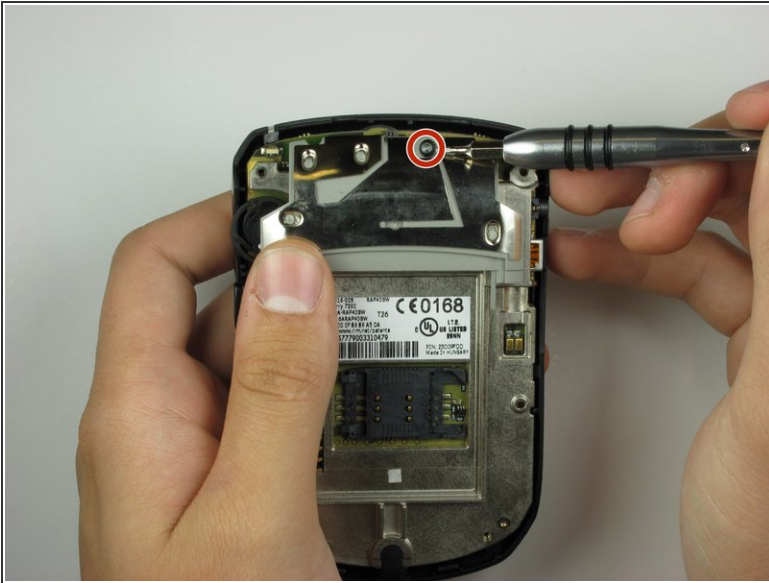
- Use the plastic opening tool to apply pressure on the two clips that are located at the bottom of the phone.

Step 8



- Remove the back casing from the phone by lifting the unhooked portion, then slide the casing towards the top of the device.
- ⓘ Make sure all clips holding the case together are unhooked, so no damage is caused to the case.

Step 9



- Locate on the backside of the phone, a screw towards the top of the device.
- Using a T-6 screwdriver, remove the screw.
- After the screw has been removed, carefully lift the side button brace to reveal the side button.

Step 10 — Keypad



- To remove the phone's internals, start by loosening one side by pulling gently.

Step 11



- With one side loosened, simply lift the phone internals to separate from the front casing.

Step 12



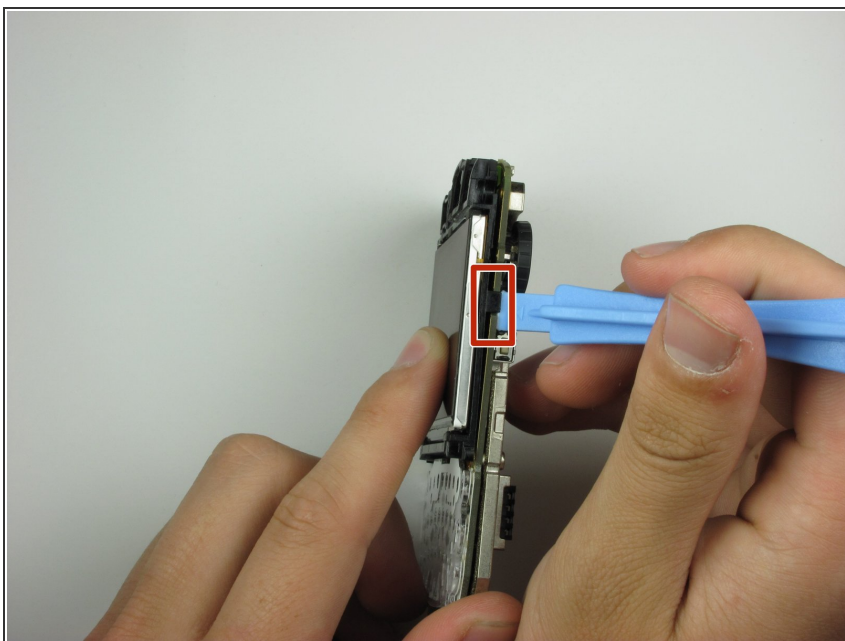
- Turn the internals over to reveal the LCD display.

Step 13



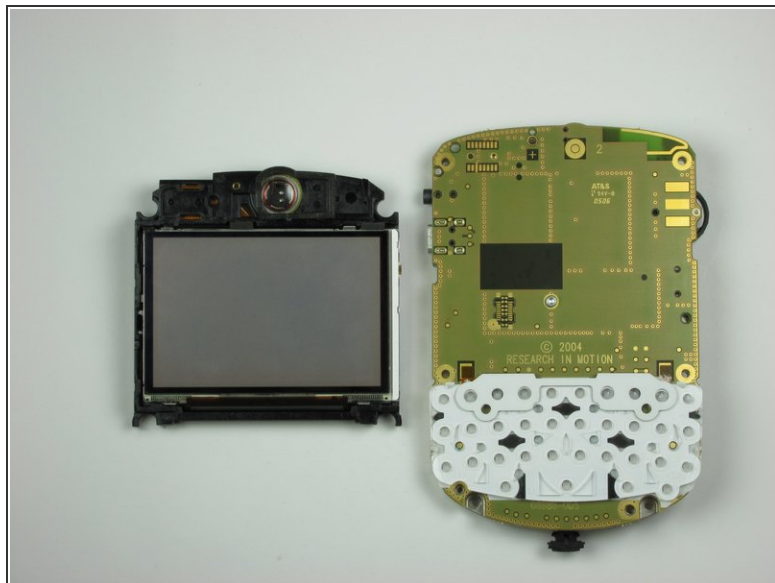
- Peel off the rubber keypad buttons from the face plate.

Step 14 — LCD



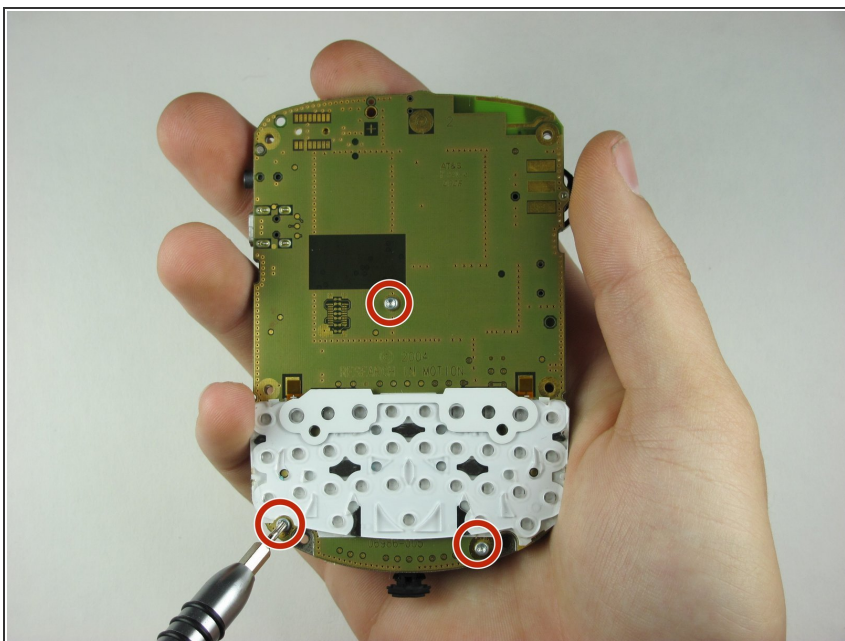
- Locate a hook on the right side of the internals below the volume wheel.
- Use a plastic opening tool to gently pry the hook, separating the LCD display from the logic board mounting plate.

Step 15



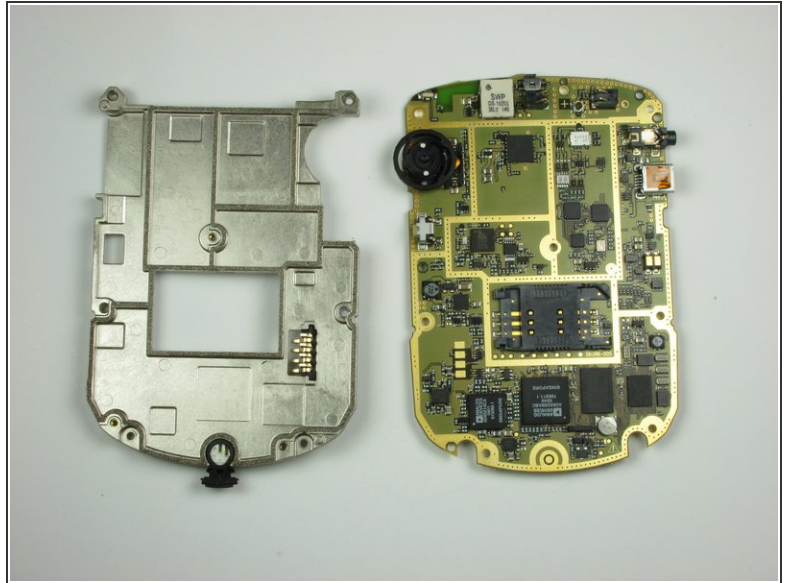
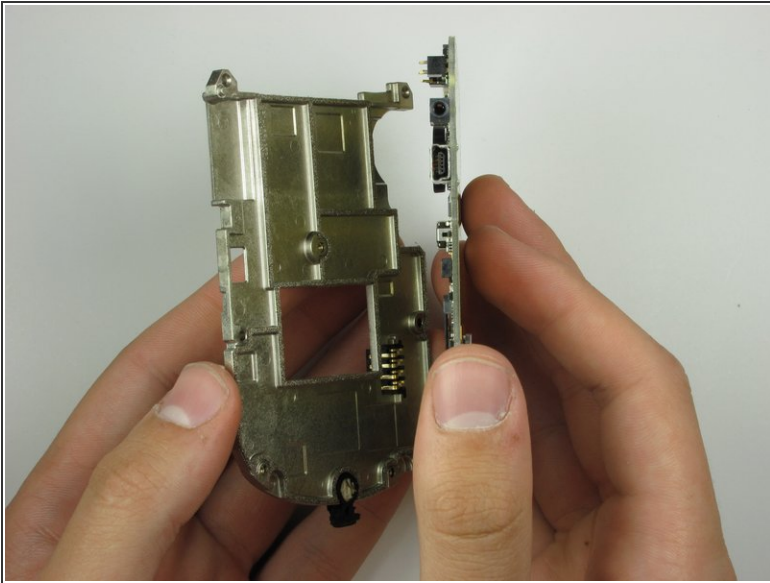
- With the clip unhooked, gently separate the display from the phone internals by pulling.

Step 16 — Logic Board



- On the front side of the internals, locate the three screws that are highlighted in red.
- Carefully remove screws from the internals, using a T6 torx screwdriver
- ⓘ The screw is .2 inches in length.

Step 17



- Separate the logic board mounting plate from the logic board by lifting with minimal force.

To reassemble your device, follow these instructions in reverse order.