



# BlackBerry 7290 Side Button Replacement

Replace the side button of your BlackBerry 7290.

Written By: Jschutt



---

## INTRODUCTION

This guide shows how to remove the side button used to browse through the menus on the RIM BlackBerry 7290.

---



### TOOLS:

- [Fingers](#) (1)
  - [Spudger](#) (1)
  - [T6 Torx Screwdriver](#) (1)
-

## Step 1 — Battery



- Apply pressure to the lock button on the back of the device.
- Slide the battery cover down towards the bottom of the device, revealing the battery compartment.

## Step 2



- Locate groove along the right side of the battery compartment.
- Remove battery by prying between the battery and the groove.



## Step 3 — SIM Card



- Slide the SIM card holder to the left to unlock the SIM card.

## Step 4



- Lift the SIM card holder up.
- Gently remove the SIM card from the SIM card holder by sliding the card along the railing.

## Step 5 — Side Button



- Locate the four screws along the perimeter of the back casing.
- Remove the four top screws using a T-6 torx screwdriver.
- The top four screws are .413 inches.

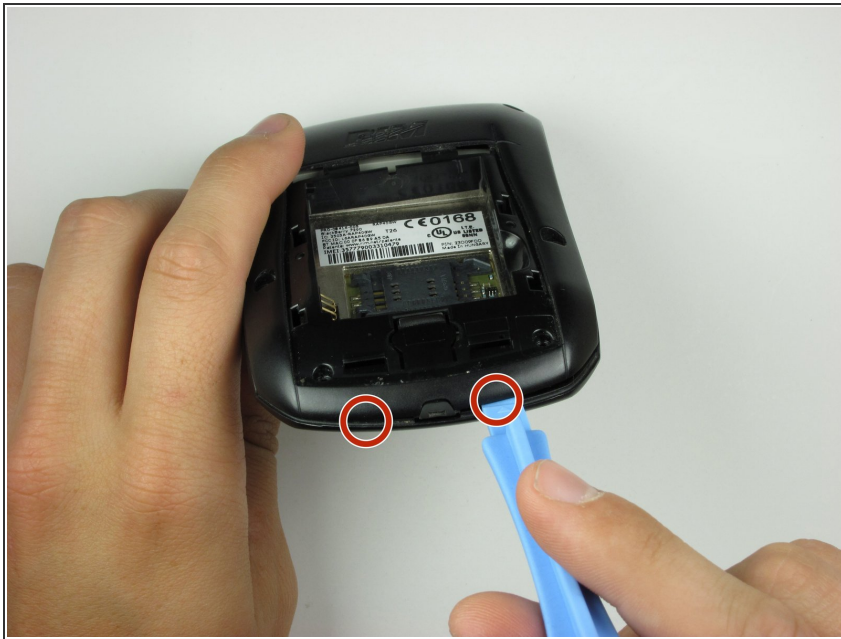
## Step 6



- Locate two screws within the lower edge of the inner compartment.
- Remove the two bottom screws using a T-6 torx screwdriver.
- i* The bottom two screws are .2 inches in length.
- i* The second picture displays the device after the six screws have been removed.



## Step 7



- Use the plastic opening tool to apply pressure on the two clips that are located at the bottom of the phone.

## Step 8



- Remove the back casing from the phone by lifting the unhooked portion, then slide the casing towards the top of the device.
- ⓘ Make sure all clips holding the case together are unhooked, so no damage is caused to the case.

## Step 9



- Locate on the backside of the phone, a screw towards the top of the device.
- Using a T-6 screwdriver, remove the screw.
- After the screw has been removed, carefully lift the side button brace to reveal the side button.

To reassemble your device, follow these instructions in reverse order.