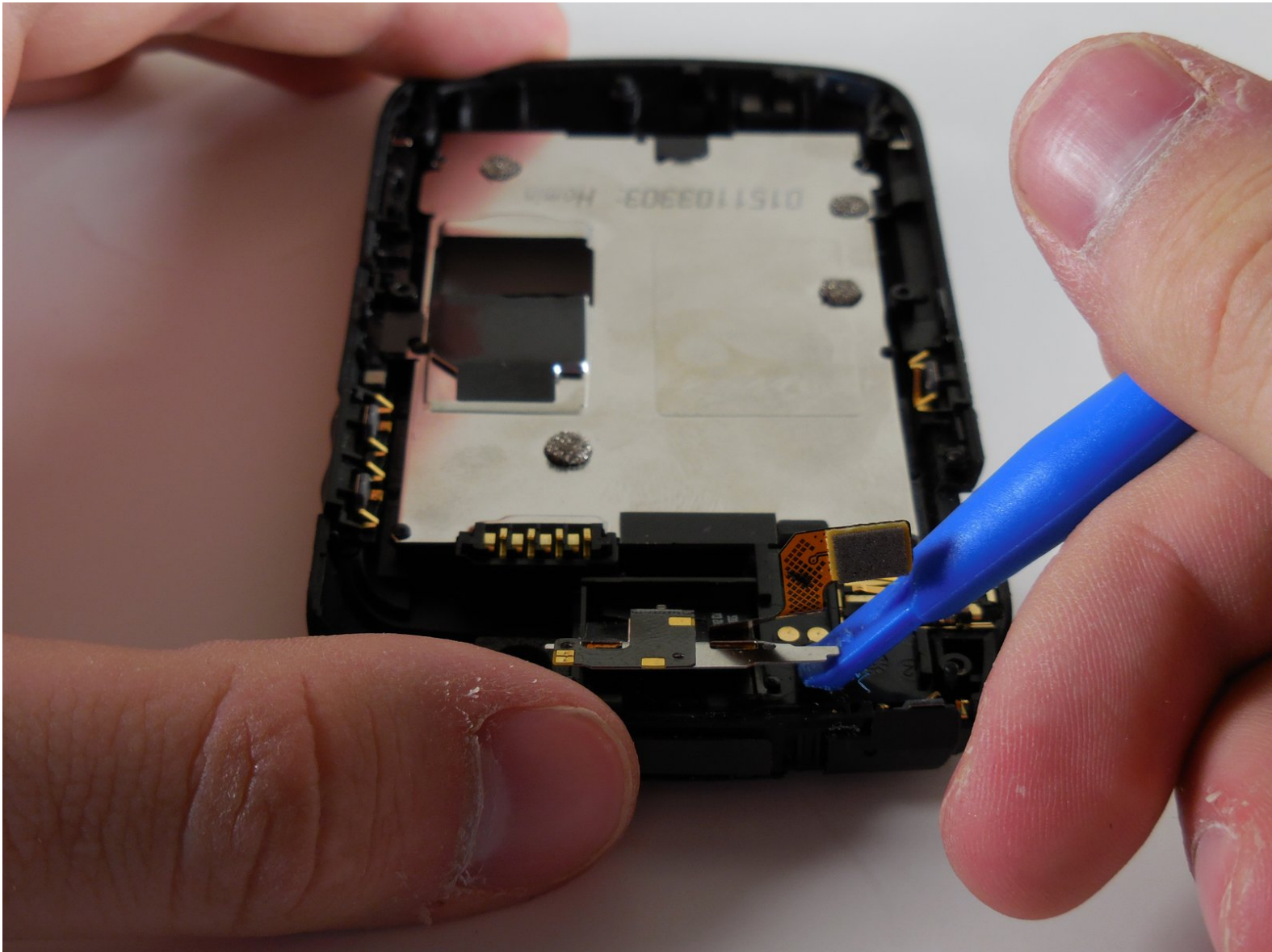




# BlackBerry Bold 9700 Memory Card Socket Replacement

These instructions walk you through changing the memory card slot for the BlackBerry Bold.

Written By: Danny



---

## INTRODUCTION

If your phone is not responding to a known good memory card there might be a problem with the socket. This repair may seem difficult, but the component itself is very easy to remove once exposed.




### TOOLS:

- [T5 Torx Screwdriver](#) (1)
  - [iFixit Opening Tools](#) (1)
-

## Step 1 — Motherboard Housing




- Remove the battery by prying the bottom of the battery upward.
- Once the battery is angled up, pull it away from the top of the device.

 Be sure to remove all power sources before working on electronic devices to avoid harming yourself or the device.

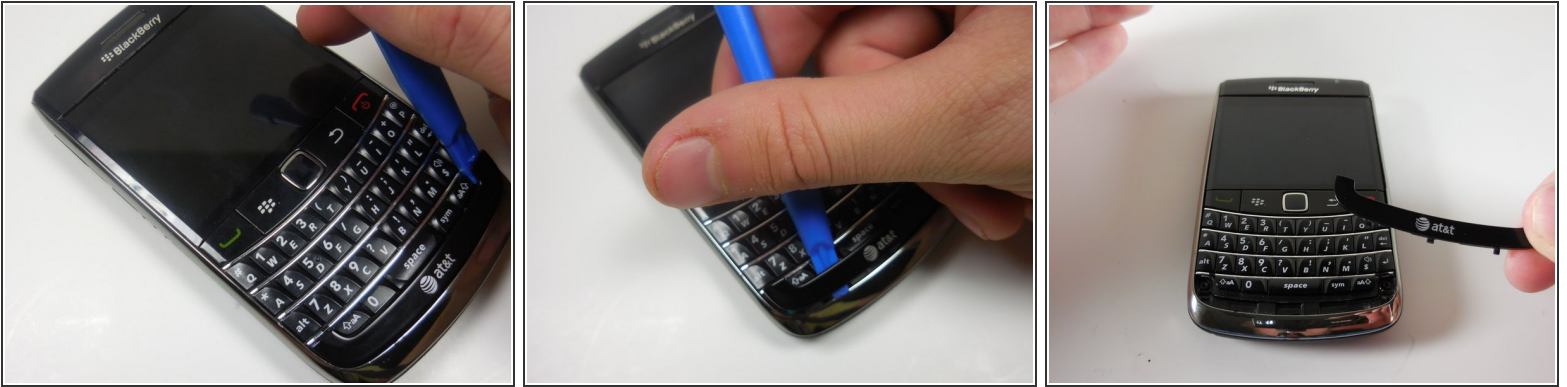
## Step 2



- Slide the SIM card from underneath the holding bracket upward toward the battery connector pins.

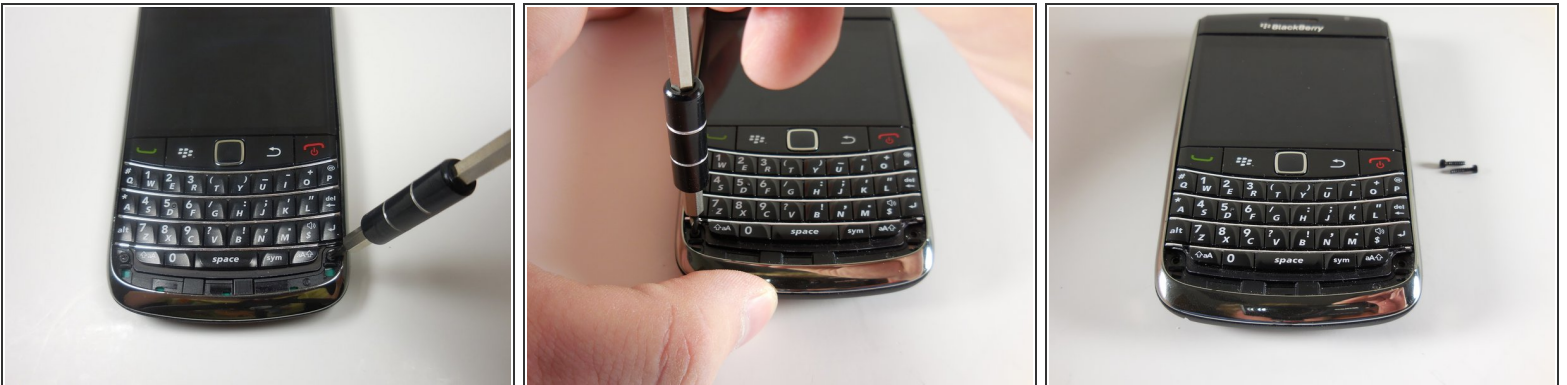
 You must remove the SIM card before you can fully disassemble the device. Failure to do so may cause damage to components later on in this process.

## Step 3



- Pry off the AT&T logo panel with the plastic opening tool.
- ⓘ You will hear a snapping sound as the plastic tabs pop out.

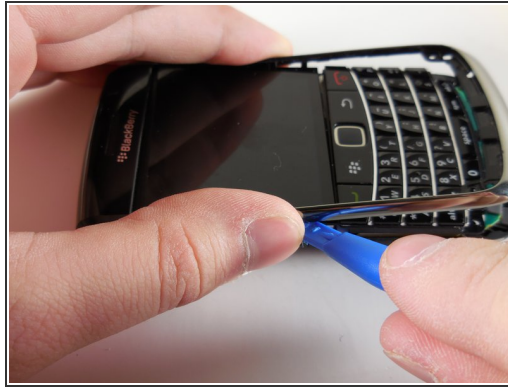
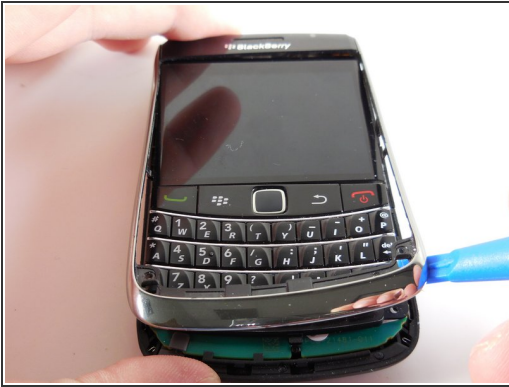
## Step 4



- Use your T5 Torx screwdriver to remove the two black 5.57mm Torx head screws underneath the keyboard.

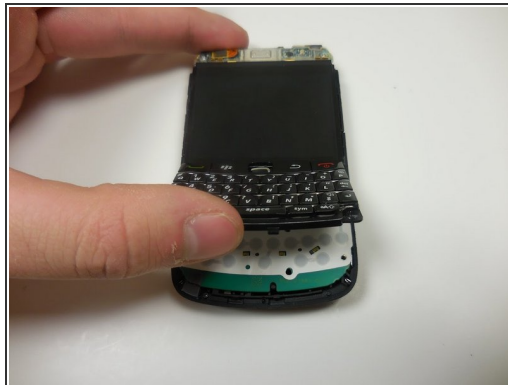
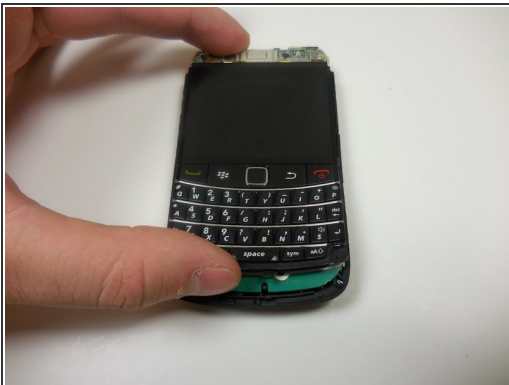


## Step 5



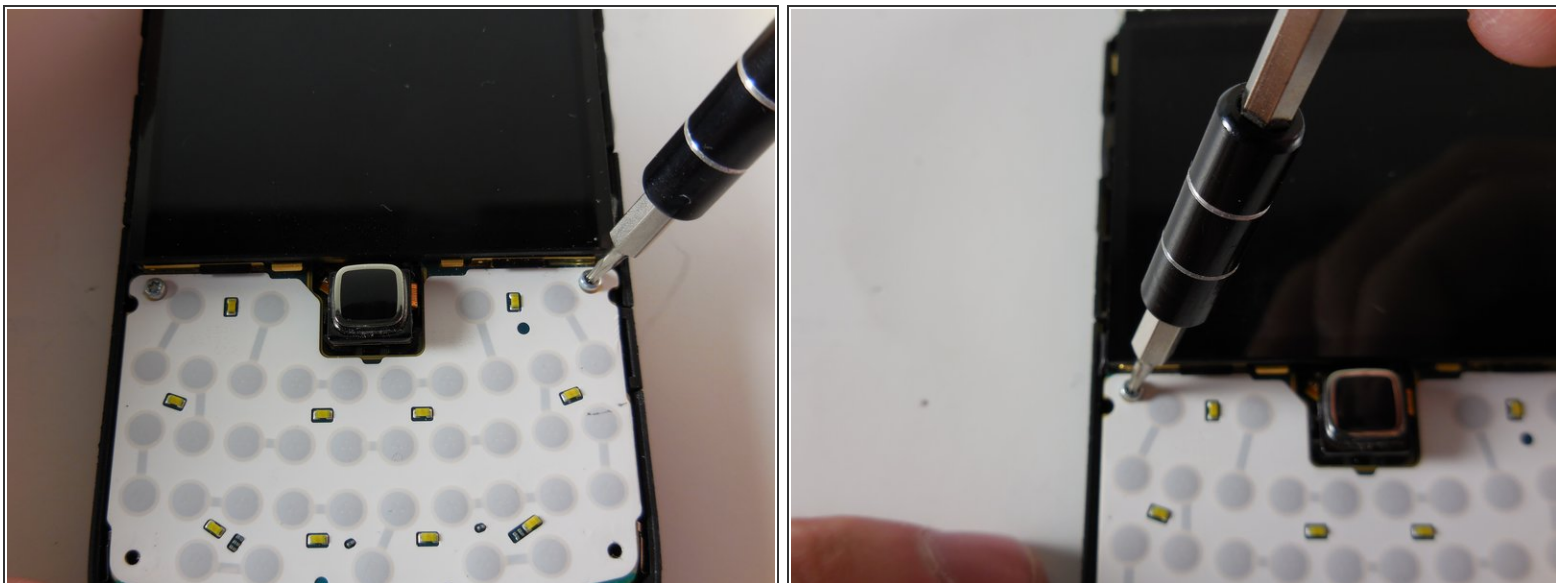
- Use the plastic opening tool to remove the frame of your device.
- ⓘ You will hear a snapping sound as the tabs pop out.
- Once the case is loosened from the device, slide the case away from the top of the phone.

## Step 6



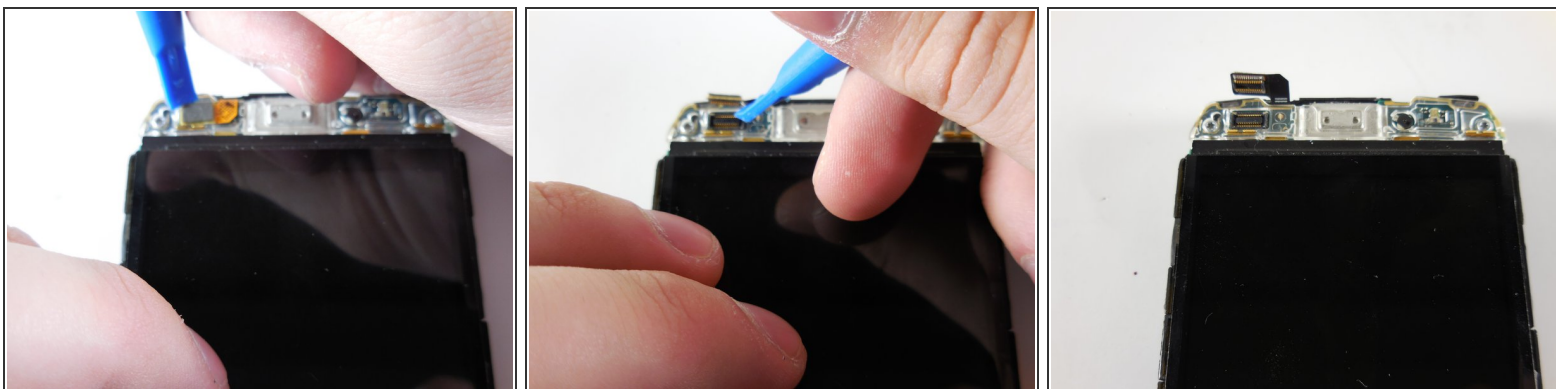
- Gently lift the bottom of the keyboard upward.
- Pull the keyboard away from the bottom of the LCD display and lift upward.

## Step 7




- Remove the two Torx head 4.13mm steel screws with your T5 Torx screwdriver.

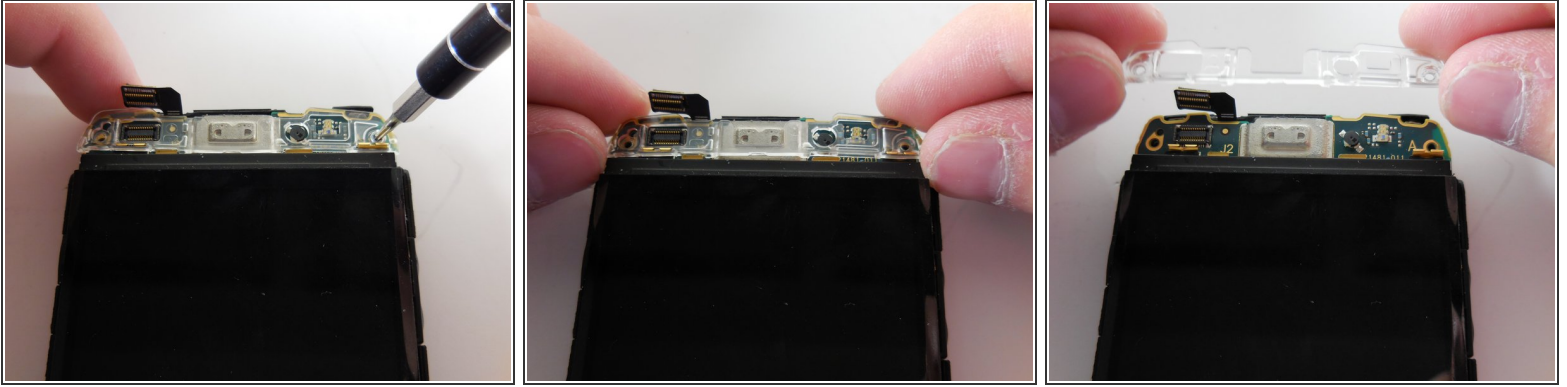
## Step 8



- Gently pry up the ribbon connector at the top of the phone with a plastic opening tool.

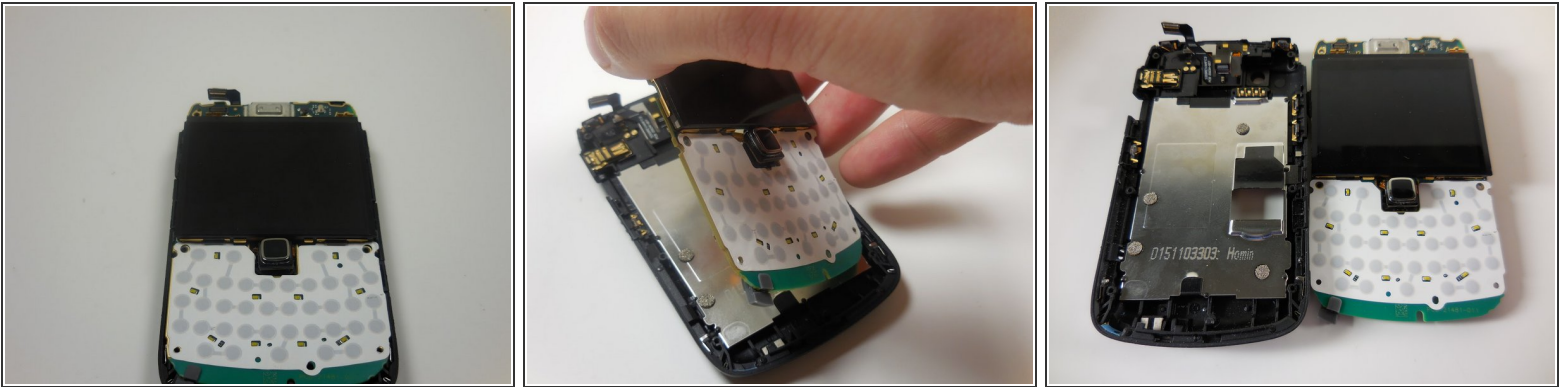
 Ribbon connectors are fragile. Too much force in the wrong place will damage the ribbon and may force you to replace an entire assembly.

## Step 9



- Remove the top two Torx head 4.13mm steel screws with your T5 Torx screwdriver.
- ☑ You should now have two 5.57mm black torx head screws and four 4.13mm steel Torx head screws off to the side. Do not lose them.
- Lift the clear plastic cover directly upward.

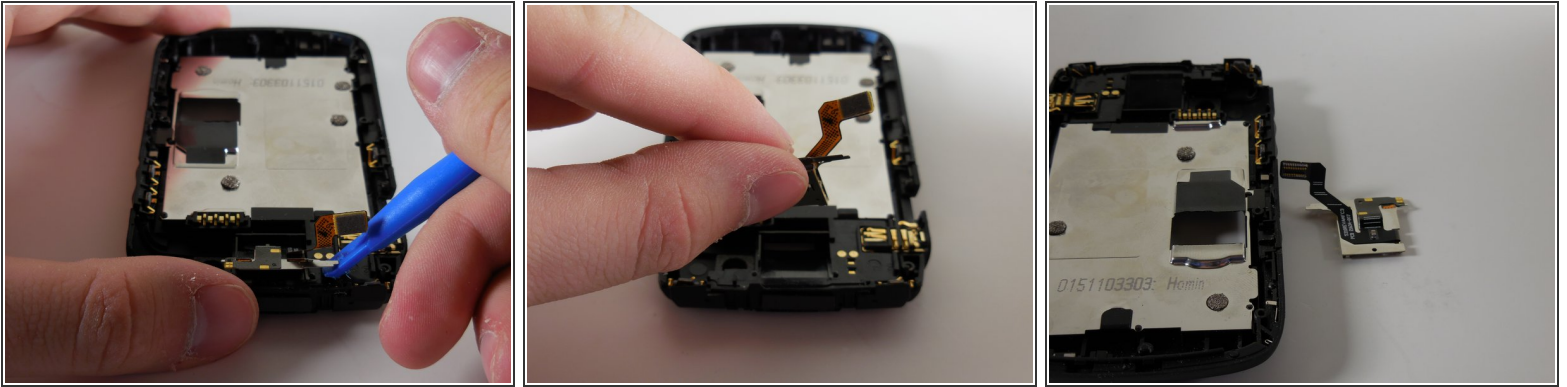
## Step 10



- Grip the motherboard by the screen
- Lift the board away from the base of the housing and vertically up.

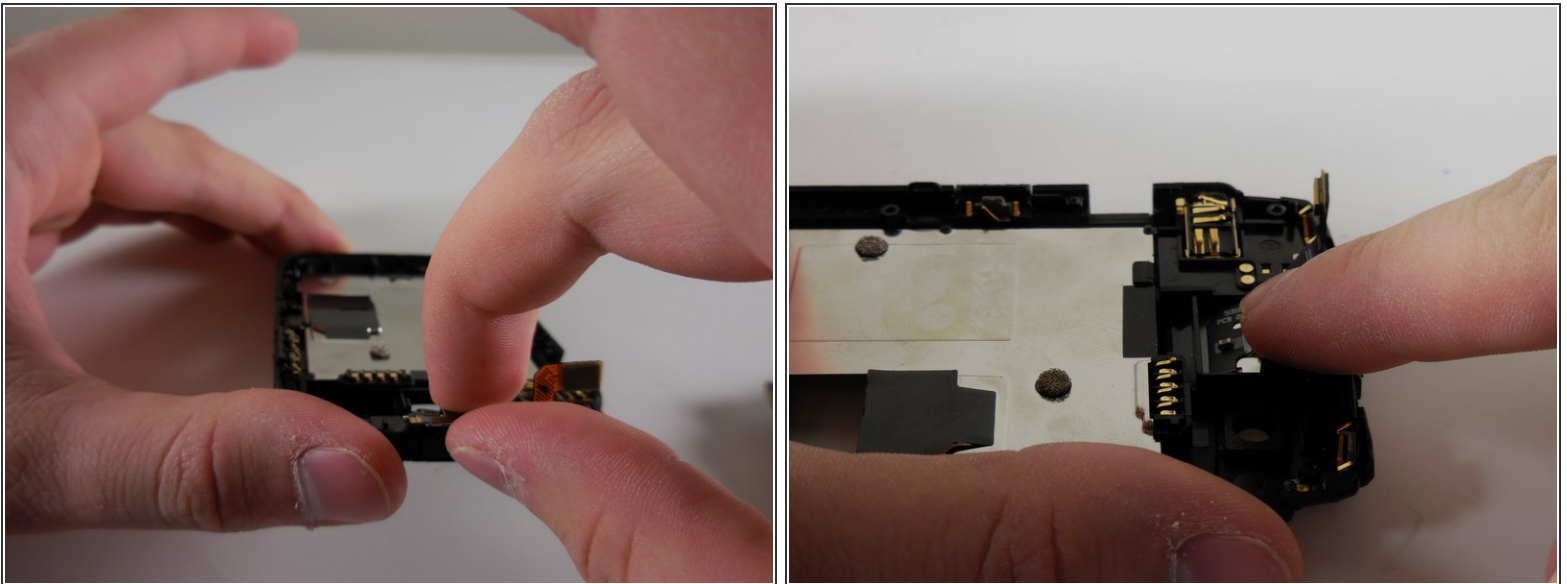


## Step 11 — Memory Card Socket



- Use plastic opening tool to pry away tiny metal arm that is holding the socket in place.
- Lift SD memory card socket away from phone housing till it is removed.

## Step 12



- Align new SD memory card socket into the socket housing and connect tiny metal arm.
- Apply pressure to the top of new SD Memory card socket.
- Once the SD memory card socket is correctly placed in the housing you are done.

To reassemble your device, follow these instructions in reverse order.

This document was generated on 2019-09-18 07:33:07 AM (MST).



